

麥寮工業專用港

統計要覽

STATISTICAL ABSTRACT OF MAILIAO HARBOR

中華民國106年 2017(每年一期)

經濟部工業局編印

Complied By

Industrial Development Bureau
Ministry of Economic Affairs
Taiwan, Republic of China

107年05月出版

第一篇 基本概況 Basic Overview	1
第二篇 提要分析 Summary Analysis	3
第三篇 統計表 Statistics Tables	

一、港務 Harbor Management

(一)船舶 Vessels

附表 1 進出港輪船地區	22
--------------------	----

Incoming and Outgoing Vessels by Area

附表 2 進港輪船國籍	24
-------------------	----

Number of Incoming Vessels by Registered Nationality

附表 3 進港輪船種類	26
-------------------	----

Number of Incoming Vessels by Kind

附表 4 進港輪船航次	28
-------------------	----

Number of Incoming Vessels by Line of Navigation

附表 5 出港輪船航次	30
-------------------	----

Number of Outgoing Vessels by Line of Navigation

附表 6 進港輪船噸級與在港停泊時間	32
--------------------------	----

Number of Incoming Vessels by Gross Tonnage and Time of Vessels Mooring in Port

(二)貨物 Cargoes

附表 7 進出港貨物國輪外輪承運量	34
-------------------------	----

Tonnage of Imports & Exports Carried by Domestic and Foreign Vessels

附表 8 進港貨物(地區別)	36
----------------------	----

Tonnage of Imports (by Region)

附表 9 出港貨物(地區別)	38
----------------------	----

Tonnage of Exports (by Region)

附表 10 進港貨物分類(按月)	40
------------------------	----

Classification of Imports (by Month)

附表 11 進港貨物分類(按碼頭)	44
-------------------------	----

Classification of Imports (by Wharf)

附表 12 出港貨物分類(按月)	48
------------------------	----

Classification of Exports (by Month)

附表 13 出港貨物分類(按碼頭)	52
-------------------------	----

Classification of Exports (by Wharf)

二、棧埠 Stevedoring & Warehousing

附表 14 本港裝卸業者營運實績(依公司別)	54
------------------------------	----

Volume of Cargoes Handled by Stevedoring & Warehousing Companies

附表 15 裝卸貨物噸量	56
--------------------	----

Volume of Cargoes Handled

附表 16 裝卸貨物效率	58
--------------------	----

Efficiency of Cargoes Handled

附表 17 貨櫃裝卸量	60
-------------------	----

Number of Containers Handled

附表 18 倉儲業務概況	64
--------------------	----

Volume of Warehousing

三、航政監理 Supervising and Administering of navigation

附表 19 工業專用港區域海事案件 Ship-Wreck	66
------------------------------------	----

四、財務 Finance

附表 20 營業總收入 Total Operating Revenue	68
---	----

附表 21 營業總支出 Total Operating Expense	70
---	----

五、組織及人事 Organization and Personnel matters

附表 22 港內各作業組織系統表	72
------------------------	----

Organization Chart

附表 23 港內作業人數(依組織別)	74
--------------------------	----

Number of Staff & Workmen of the Bureau and Branch Offices

附表 24 港內作業人員學歷(依組織別)	76
----------------------------	----

Number of Staff by Education

附表 25 港內作業人員年齡(依組織別)	78
----------------------------	----

Number of Staff by Age

六、港埠設施 Harbor Facilities

附表 26 機具、車、船(依組織別)	80
--------------------------	----

Mechanical, Vehicular & Marine Equipment

附表 27 港埠工程	84
------------------	----

Harbor Construction

第一篇 基本概況

一、港埠基本資料

經濟部為因應我國基礎工業之發展，配合六輕及六輕擴大投資計畫用地需求，以提供國內既有及未來石化產業建廠及遷廠需要，乃規劃於雲林縣外海以抽砂填海造地方式開發雲林離島式基礎工業區，共分有麥寮區、新興區、台西區及四湖區，其中麥寮區之六輕計畫石化工業區係由台塑企業自行進行抽砂填海造地，而麥寮工業專用港（以下簡稱麥寮港）內之專用碼頭，則全為配合六輕計畫所興建。

麥寮港為我國由民營事業投資興建及經營管理港口之首例，其港埠經營完全由台塑企業成立之麥寮工業區專用港管理股份有限公司（以下簡稱港口公司）負責，經濟部工業局於 89 年 10 月 1 日現地派駐成立麥寮工業專用港管理小組（以下簡稱管理小組），以最精簡人力有效扮演監督，執行具有公權力之港務行政管理及協調航政、海關、港警、檢疫及安檢等其他相關公務機關，順利於 90 年 2 月 22 日邀集交通部、財政部、內政部、國防部、海巡署、環保署、農委會及雲林縣政府等各機關現地履勘合格後，已於 90 年 3 月 1 日起開始正式營運。

麥寮港位於東經 120 度 08.9 分、北緯 23 度 46.9 分。北起濁水溪口南側，南臨新虎尾溪口，澎湖水道東側海岸。北距台中港約 40 哩，南離高雄港約 80 哩。港口方向朝西偏南 34°（約介於西南西與西南間），航道於中潮位水深 24 公尺，可供 30 萬噸級船舶進出，為台灣最深之港口。

二、港灣及碼頭

（一）港灣設施

- (1)防波堤：西防波堤長 3,243 公尺，南防波堤長 2,227 公尺。
- (2)迴船池：直徑 900 公尺。
- (3)港外水域：劃設領港登輪區、外航道及到港船舶錨泊區。
- (4)導航設施：進港疊標、堤頭燈塔及航道浮燈標等，用以引導及協助船舶之安全航行。
- (5)信號台設施：船舶交通管理系統(VTS)、海氣象設施及 DSB 通信設備等，用以管制船舶航行與進出港。
- (6)港勤船渠：供港勤船舶靠泊、加油及加水等使用。
- (7)港務港勤大樓：提供政府單位、港區作業單位、港口公司及信號台辦公或作業所需。
- (8)機工場及滑道：供港勤船舶維修、檢驗及保養所需。

(二)碼頭設施

營運中 20 座專用碼頭分別由台塑石化公司及麥寮汽電公司自行投資興建及維護管理。

三、設備概況

(一)港勤船舶

由港口公司購置拖船 10 艘、交通船 1 艘及什用船 1 艘，用以協助船舶進出港口及靠泊碼頭所需。

(二)裝卸設備

各碼頭依裝卸需求由裝卸作業單位購置裝卸機具，諸如卸料臂、卸煤機、貨櫃起重機、貨櫃吊運機及空櫃堆高機等，以提供裝卸服務。

第二篇 提要分析

一、營運實績

(一)進出港船舶

(1)進港船舶：106 年 1 月至 12 月進港船舶合計 2,664 艘次，5,973 萬 7,619 總噸位，較 105 年減少 120 次，減少率為 4.31%，總噸位減少 1 萬 2,807 總噸位，減少率為 0.02%，若與 90 年比較，則增加 1,293 艘次及增加 3,781 萬 6,916 總噸位，增加率分別為 94.31%與 172.52%。

(2)出港船舶：106 年 1 月至 12 月出港船舶合計 2,663 艘次，5,977 萬 9,242 總噸位，較 105 年減少 120 艘次，減少率為 4.31%，總噸位減少 1 萬 5,192 總噸位，減少率為 0.03%，若與 90 年比較，則增加 1,289 艘次及增加 3,781 萬 6,076 總噸位，增加率分別為 93.81%與 172.18%。

(二)貨物吞吐量：106 年全年進港貨物為 4,908 萬 571 公噸、出港貨物為 2,230 萬 7,103 公噸，吞吐量為 7,138 萬 7,674 公噸，較上年減少 114 萬 1,956 公噸，減少率為 1.57%。若與 90 年比較，則增加 4,506 萬 7,628 公噸，增加率為 171.23%。

(三)貨物裝卸量：106 年 1 月至 12 月全港裝卸量合計為 7,136 萬 1,993 公噸，較上年減少 71 萬 7,805 公噸，減少率為 1.00%。若與 90 年比較，則增加 4,532 萬 565 公噸，增加率為 174.03%；另 106 年區內貨主以台塑石化公司 5,560 萬 7,842 公噸為最多，占 77.92%，其次為麥寮汽電公司 510 萬 9,640 公噸，占 7.16%，再次為台塑公司 418 萬 1,042 公噸，占 5.86%。

(四)謹刊列臺灣地區各港口 106 年營運量比較表（如表 1），以供參考。

二、港務統計資料

106 年度進出港船舶及貨物，依各類統計條件說明如次：

(一)船舶

(1)進港船舶國籍：以巴拿馬 392 艘次為最多，其次為香港 383 艘次，再次為賴比瑞亞 222 艘次。

(2)進港船舶種類：以油輪 679 艘次為最多，其次為液化輪 371 艘次，再次為化學輪 305 艘次。

(3)進港輪船航次：以國內而言，來自於高雄港 30 艘次為最多。以國外而言，則以中國 1,058 艘次為最多，其次為南韓 407 艘次，再次為菲律賓 220 艘次。

(4)出港輪船航次：以國內而言，前往高雄 31 艘次為最多。以國外而言，則以中國 1,042 艘次為最多，其次為新加坡 300 艘次，再次為南韓 282 艘次。

(5)進港船舶噸級：進港船舶每艘平均 2 萬 2,424 總噸，較上年度增加 962 總噸，其中有 884 艘次船舶總噸位介於 1,000~4,999 總噸位為最多，其次船舶總噸位介於 5,000~9,999 總噸位為 613 艘次，再次船舶總噸位介於 20,000~39,999 總噸位為 449 艘次。

(6)在港停泊時間：出港船舶每艘平均停泊 38.33 小時，較上年度增加 2.13 小時，其中有 1,402 艘次以船舶停泊 25~48 小時為最多，其次為 24 小時以內者 844 艘次，再次為 49~72 小時者 194 艘次。

(二)貨物

(1)船舶承運量：國輪承運 255 萬 1,710 公噸，占全部 3.57%，較上年度減少 13 萬 2,986 公噸，負成長 4.95%。外輪承運 6,883 萬 5,964 公噸，占全部 96.43%，較上年度減少 100 萬 8,970 公噸，負成長 1.44%。

(2)貨物來源地：以澳洲 789 萬 7,728 公噸為最多，占 16.09%，其次為沙烏地阿拉伯 710 萬 3,741 公噸，占 14.47%，再次為科威特 595 萬 541 公噸，占 12.12%。

(3)貨物運達地：以中國大陸 634 萬 8,111 噸為最多，占 28.46%，其次為菲律賓 629 萬 3,931 公噸，占 28.21%，再次為新加坡 223 萬 3,230 公噸，占 10.01%。

(4)進港貨物類別：以非金屬礦物製品 3,246 萬 3,964 公噸為最多，占 66.14%，其次為礦產品 1,439 萬 3,639 公噸，占 29.33%，再次為化學品 177 萬 6,030 公噸，占 3.62%。

(5)出港貨物類別：以非金屬礦物製品 1,167 萬 8,628 公噸為最多，占 52.35%，其次為化學品 736 萬 9,691 公噸，占 33.04%，再次為其他什貨 299 萬 3,102 公噸，占 13.42%。

(6)進港貨物卸貨碼頭：以西三碼頭 2,117 萬 9,140 公噸為最多，占 43.15%，其次為西二碼頭 779 萬 2,508 公噸，占 15.88%，再次為東四碼頭 673 萬 2,187 公噸，占 13.72%。

(7)出港貨物裝貨碼頭：以東七碼頭 434 萬 3,185 公噸為最多，占 19.47%，其次為西一碼頭 362 萬 7,246 公噸，占 16.26%，再次為東八碼頭 329 萬 1,583 噸，占 14.76%。

三、棧埠統計資料

106 年度棧埠裝卸情形，依各類統計條件說明如次：

(1)貨主：以台塑石化公司 5,560 萬 7,842 公噸為最多，占 77.92%，其次為麥寮汽電公司 510 萬 9,640 公噸，占 7.16%。

(2)裝卸貨物：裝貨部份以管道貨 2,129 萬 3,150 公噸為最多，占裝貨量 96.16%。卸貨部份以管道貨 3,467 萬 9,420 公噸為最多，占卸貨量 70.46%，其次為燃煤 1,261 萬 1,344 公噸，占 25.62%。

(3)裝卸效率：平均每小時裝貨量 485 公噸，較上年度增加 1.25%。平均每小時卸貨量 852 公噸，與上年度相同。

(4)貨櫃：自 103 年 05 月份起未再有貨櫃裝卸業務。

四、航政統計資料

106 年麥寮港海事案件計 0 件，較上年減少 2 件。

五、財務統計資料

港口公司及裝卸單位 106 年營業收入總計 42.43 億元，較上年減少 0.25 億元，負成長 0.59%。營業支出總計 27.53 億元，較上年減少 1.67 億元，負成長 5.71%。

六、組織及人事統計資料

(1)管理小組：執行具有公權力之港務行政管理及協調航政、海關、港警、檢疫及安檢等其他相關公務機關，合計 8 人（含主任），與上年度相同。

(2)港口公司：負責麥寮港之經營與管理，設有管理組、航管組、港安組及工程組，由航管組、港安組及工程組負責現地港務業務，合計 41 人，與上年度

相同。

(3)港灣作業機構：麥寮港之拖船操作業務係由港口公司委託台塑海運公司執行，另引水人接送、帶解纜、船舶垃圾清理及港區海面垃圾清理等業務由外包廠商負責辦理，合計 151 人，較上年度增加 4 人。

(4)棧埠作業機構：由區內興辦工業人委託台塑石化公司碼槽處執行專用碼頭之裝卸作業，另攔油索佈放、加油及加水等作業由外包廠商負責辦理，合計 493 人，較上年度增加 32 人。

七、港埠設施統計資料

(1)港棧設施：20 座專用碼頭。

(2)船舶：拖船 10 艘、交通船 4 艘及什用船 4 艘等 18 艘港勤船舶，與上年度相同。

(3)機具：17 台機具，較上年度增加 3 台。

(4)車輛： 37 台車輛，與上年度相同。

表 1 106 年度台灣地區各港口營運量比較

港口別	進港船舶				吞吐量		貨物裝卸量	
	艘次	%	總噸位	%	公噸	%	計費噸	%
總計	41,222	100.00%	863,162,507	100.00%	325,831,408	100.00%	805,036,231	100.00%
麥寮港	2,664	6.46%	59,737,619	6.92%	71,387,674	21.91%	71,361,993	8.86%
和平港	360	0.87%	5,685,468	0.66%	7,959,266	2.44%	8,170,079	1.01%
高雄港	18,773	45.54%	457,791,178	53.04%	116,070,972	35.62%	450,042,900	55.90%
基隆港	5,606	13.60%	95,474,985	11.06%	17,464,002	5.36%	60,191,543	7.48%
台中港	7,898	19.16%	135,676,755	15.72%	75,348,241	23.12%	128,675,383	15.98%
花蓮港	908	2.20%	9,660,305	1.12%	8,665,814	2.66%	8,833,276	1.10%
蘇澳港	526	1.28%	6,679,601	0.77%	4,191,916	1.29%	4,306,890	0.53%
安平港	410	0.99%	3,790,800	0.44%	1,620,189	0.50%	1,646,357	0.20%
台北港	4,077	9.89%	88,665,796	10.27%	23,123,334	7.10%	71,807,810	8.92%

商港資料來源：高雄港統計年報

Chapter I. Basic Overview

1. Basic Harbor Information

In response to basic domestic development, to co-op with the land necessity of the Six Naphtha Cracking Complex Project and its expansion, and to domestically provide existing and future necessities for the construction and relocation of petrochemical business. The Ministry of Economic Affairs has planned to develop the Yunlin offshore Primary Industry Zone by dredging sea sand for landfill to create offshore lands. The lands created include Mailiao, Hsin Hsing, Tai Hsi, and Ssu Hu. Mailiao area is the petrochemical zone under the Sixth Naphtha Cracking Complex Project which was proceeded by the Conglomerates of Formosa Plastic by dredging sea sand for landfill. The special purpose wharves inside the industrial harbor of Mailiao (hereinafter referred to as Mailiao Harbor) were all constructed to cooperate with the Sixth Naphtha Cracking Complex Project.

Mailiao Harbor was the first domestic private enterprise constructed, operated and managed harbor. The harbor operation is run by the Mailiao Harbor Administration Corporation (hereinafter referred to as Mailiao Harbor Corporation) established by Formosa Plastics Groups. The Industrial Development Bureau of the Ministry of

Economic Affairs constructed the management groups for Mailiao exclusive industrial harbor (hereinafter referred to as Administration groups) on Oct. 1, 2000, and used the most streamlined manpower to supervise and implement harbor administrative management, and coordinate the navigation & shipping supervision, customs, harbor police, quarantine, security inspection and other relevant government authorities. After an inspection approval was carried out by the Ministry of Transportation and Communications, the Ministry of Finance, the Ministry of the Interior, the Ministry of National Defense, the Department of Coast Guard, the Department of Environment Protection, the Committee of Agriculture Affairs and the Government of Yunlin County on Feb. 22, 2001; it started its official operation on Mar. 1, 2001.

Mai Liao Harbor is located at longitude 120°08.9' E, latitude 23°46.9'. It is bordered to the north by Chuoshui Stream and to the south by Hsinhuwei Stream. The harbor lies 40 nautical miles south of Taichung and 80 nautical miles north of Kaohsiung. The harbor direction faces west with an inclination of 34 degrees to the south. The shipping channel is 24 meters deep at mean tide and can accommodate 300,000 DWT class VLCC, making it Taiwan's deepest harbor.

2. Harbor and Wharf

A. Harbor Facilities

(1) Breakwater: The west breakwater is 3,243 meters long, and the south breakwater is 2,227 meters long.

(2) Turning basin: 900 meters in diameter.

(3) Outer waters: The outer waters are divided into a Pilot Station, outer navigation channel and anchorage.

(4) Aids to navigation: Include ranges, breakwater lighthouses and navigational channel buoys to assist in guiding ships into and out of the harbor.

(5) Signal station: Include VTS (vessel traffic services), climate & sea conditions

facilities and DSB communication equipment.

(6) Harbor craft basin: For the wharfing and servicing (oil and water) of harbor craft.

(7) Harbor administration building: Provides government agencies, harbor operating unit, Mailiao Harbor Corporation and signal station or operational demands.

(8) Ship & machinery repair works and slipway: For repair, inspection and maintenance of harbor craft.

B. Wharf Facilities

The 20 operating appropriate berths respectively are constructed, operated and managed by Formosa Petrochemical Corporation and Mailiao Power Corporation.

3. Equipment Overview

A. Harbor Vessels

Mailiao Harbor Corporation has purchased 10 tug boats, 1 shuttle boat and 1 miscellaneous boat to assist the incoming/outgoing vessels and docking requirements.

B. Loading/Unloading Equipment

According to the loading/unloading demands, various wharfs' loading/unloading operation unit will purchase the loading/unloading equipment, such as unloading arm, coal unloader, container cranes, container lifting machine, and empty container forklift to provide the loading/unloading services.

Chapter II. Summary Analysis

1. Operation Performance

A. Incoming/Outgoing Vessels

(1) Incoming Vessels: A total of 2,664 vessels called at Mailiao Harbor in 2017 and

amounted to a gross tonnage of 59,737,619. The number of vessels had a decrease of 120 (4.31%), and the gross tonnage decreased 12,807GT (0.02%), compared to the previous year. Compared to 2001, the number of the vessels had an increase of 1,293 (94.31%) and the gross tonnage increased 37,816,916 GT (172.52%).

(2) Outgoing Vessels: A total of 2,663 vessels called at Mailiao Harbor in 2017 and amounted to a gross tonnage of 59,779,242. The number of vessels had a decrease of 120 (4.31%), and the gross tonnage decreased 15,192 GT (0.03%), compared to that of the previous year. Compared to 2001, the number of vessels had an increase of 1,289 (93.81%) and the gross tonnage increased 37,816,076 GT (172.18%).

B. Cargo throughput: At Mailiao Harbor, the imports reached 49,080,571 MT in 2017, and the exports reached 22,307,103 MT. The amount of cargo throughput reached 71,387,674 MT, 1,141,956 MT (1.57%) less than that of the previous year. It had an increase of 45,067,628 MT (171.23%) over 2001.

C. Loading and Unloading: In 2017 the amount of loading and unloading reached 71,361,993 revenue tons, 717,805 MT (1.00%) less than that of the previous year. Compared to 2001, the amount of loading and unloading had an increase of 45,320,565 MT (174.03%). In addition, Formosa Petrochemical Corporation was the biggest owner of cargo in 2017, 55,607,842 MT (77.92%), followed by Mailiao Power Corporation's 5,109,640 MT (7.16%), and Formosa Plastics Corporation's 4,181,042 MT (5.86%).

D. The business volume comparison table of Taiwan harbors in 2017 is listed for reference (See Table 1).

2. Harbor Statistical Information

The 2017 incoming/outgoing vessels and cargo are described in accordance with the various statistical conditions as follows:

A. Vessels

(1) Incoming Vessels by Nationality: Most incoming vessels came from Panama, 392, followed by Hong Kong, 383 and Liberia, 222.

(2) Incoming Vessels by Kind: There are 679 tankers, followed by 371 liquid chemical tankers, and 305 chemical tankers.

(3) Incoming Vessels by Line of Navigation: Domestically, there are 30 ships from Kaohsiung Harbor. Internationally, there are 1,058 ships from China, followed by 407 ships from South Korea and 220 ships from Philippine.

(4) Outgoing Vessels by Line of Navigation: Domestically, there are 31 ships going to Kaohsiung. Internationally, there are 1,042 ships going to China, followed by 300 ships going to Singapore and 282 ships going to South Korea.

(5) Incoming Vessels by Gross Tonnage: On average, each incoming vessel has 22,424 GT, compared to 2016, the gross tonnage had an increase of 962, of which there are 884 vessels between 1,000 GT~4,999 GT, 613 vessels between 5,000 GT~9,999 GT, and 449 vessels between 20,000 GT~39,999 GT.

(6) Time of Vessels Mooring in port: The average number of mooring hours of the outbound vessels is 38.33 which is 2.13 hours more than in 2016, of which there are 1,402 vessels mooring for 25~48 hours, followed by 844 vessels mooring in 24 hours, and 194 vessels mooring for 49~72 hours.

B. Cargo

(1) Vessels Carried Volume: The domestic vessel carried volume is 2,551,710 tons

(3.57%) and 132,986 tons less than in 2016; it has a negative growth of 4.95%. The foreign vessels cargo volume is 68,835,964 tons (96.43%), and 1,008,970 tons less than in 2016; it has a negative growth of 1.44%.

(2) Cargo Origin: Most cargo originates from Australia. It has 7,897,728 MT (16.09%), followed by Saudi Arabia's 7,103,741 MT (14.47%), and Kuwait's 5,950,541 MT (12.12%).

(3) Cargo Destination: Most cargo is destined for Mainland China with 6,348,111 MT (28.46%), followed by Philippine's 6,293,931 MT (28.21%), and Singapore's 2,233,230 MT (10.01%).

(4) Classification of Imports: The non-metallic mineral products are the most, 32,463,964 MT (66.14%), followed by 14,393,639 MT of mineral products (29.33%), and 1,776,030 MT of chemical products (3.62%).

(5) Classification of Exports: The non-metallic mineral products are the most, 11,678,628 MT (52.35%), followed by 7,369,691 MT of chemical products (33.04%), and 2,993,102 MT of general merchandise products (13.42%).

(6) Unloading Berths of Imports: Berth West-3 has the most unloading of imports, 21,179,140 MT (43.15%), followed by Berth West-2, which has 7,792,508 MT (15.88%), and Berth East-4, which has 6,732,187 MT (13.72%).

(7) Loading Berths of Exports: Berth East-7 has the most loading of exports, 4,343,185 MT (19.47%), followed by Berth West-1 which has 3,627,246 MT (16.26%), and Berth East-8, which has 3,291,583 MT (14.76%).

C. Stevedoring & Warehousing Statistical Information

The 2017 Stevedoring & Warehousing situations are described in accordance with

the various statistical conditions as follows:

(1) Owner of Cargo: Formosa Petrochemical Corporation is 55,607,842 MT (77.92%) of the most, followed by Mailiao Power Corporation's 5,109,640 MT (7.16%).

(2) Cargo Handling: For cargo loading, the most is pipe line cargo, 21,293,150 MT (96.16%). For cargo unloading, the most is pipe line cargo, 34,679,420 MT (70.46%), followed by 12,611,344 MT of coal (25.62%).

(3) Cargo Handling Efficiency: The average loading volume is 485 MT per hour, which is 1.25% more than 2016. The average unloading volume is 852 MT per hour, the same as the previous year.

(4) Container: There is no Loading/unloading container operation since May 2014.

4. Navigation & Shipping Supervision Statistical Information

No marine accident was found in Mailiao Harbor in 2017, 2 accidents less than the previous year.

5. Financial Statistical Information

The 2017 total operation revenue of Mailiao Harbor Corporation and the loading/unloading units was 4.243 billion, which is 0.025 billion less than in 2016; a negative growth of 0.59%. The total operation expenses were 2.753 billion, which is 0.167 billion less than in 2016; a negative growth of 5.71%.

6. Organization and Personnel Statistical Information

(1) Administration Groups: implement harbor administrative management, and coordinate the navigation & shipping supervision, customs, harbor police, quarantine, security inspection and other relevant government authorities. There is

a total of 8 people (including the chief), the same as the previous year.

(2) Mailiao Harbor Corporation: responsible for the operation and management of Mailiao Harbor; there is a administration section, a port control section, a port security section and an engineering section set up. The on-site harbor affairs are run by the port control section, port security section and engineering section, which has a total of 41 people, the same as the previous year.

(3) Harbor Operators: trailer operation of Mailiao Harbor is implemented by Formosa Plastics Marine Corporation, commissioned by Mailiao Harbor Corporation, and the pilotage pick up, mooring&unmooring, vessels trash cleaning and harbor sea surface trash cleaning, etc. affairs handled by the outsourced suppliers. It has a total of 151 people, 4 persons more than the previous year.

(4) Berths Operators: district industrial personnel commissioned Formosa Petrochemical Corporation implement appropriate wharf loading/unloading operations. The oil boom laying, oil and water servicing operations are handled by the outsourced suppliers; it has a total of 493 people, 32 people more than the previous year.

7. Harbor Facilities Statistical Information

(1) Harbor Facilities: 20 specialized wharves.

(2) Vessels: 18 harbor vessels, including: 10 tug boats, 4 shuttle boats and 4 miscellaneous boats, the same as the previous year.

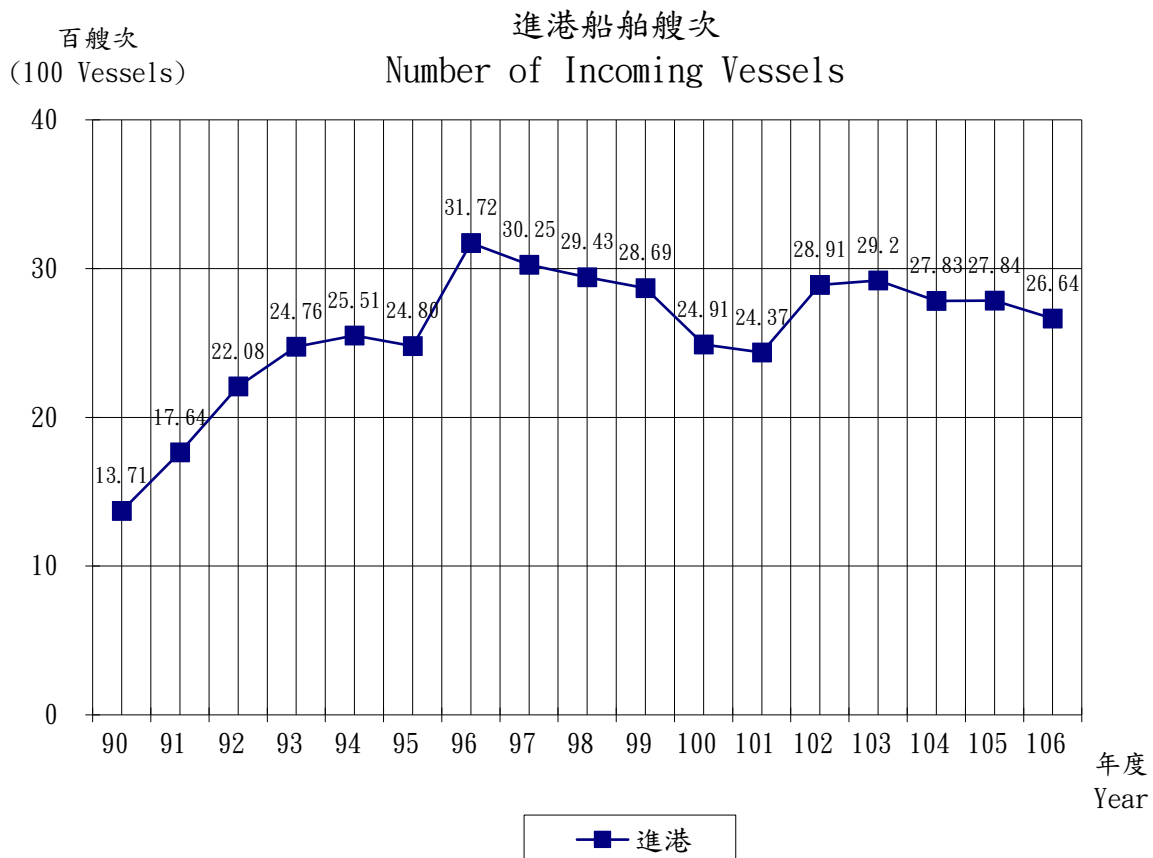
(3) Machines and Instruments: 17 machines and instruments, there are three machines more than the previous year.

(4) Vehicles: 37 vehicles, the same as the previous year.

Table 1: The business volume comparison table of Taiwan harbors in 2017

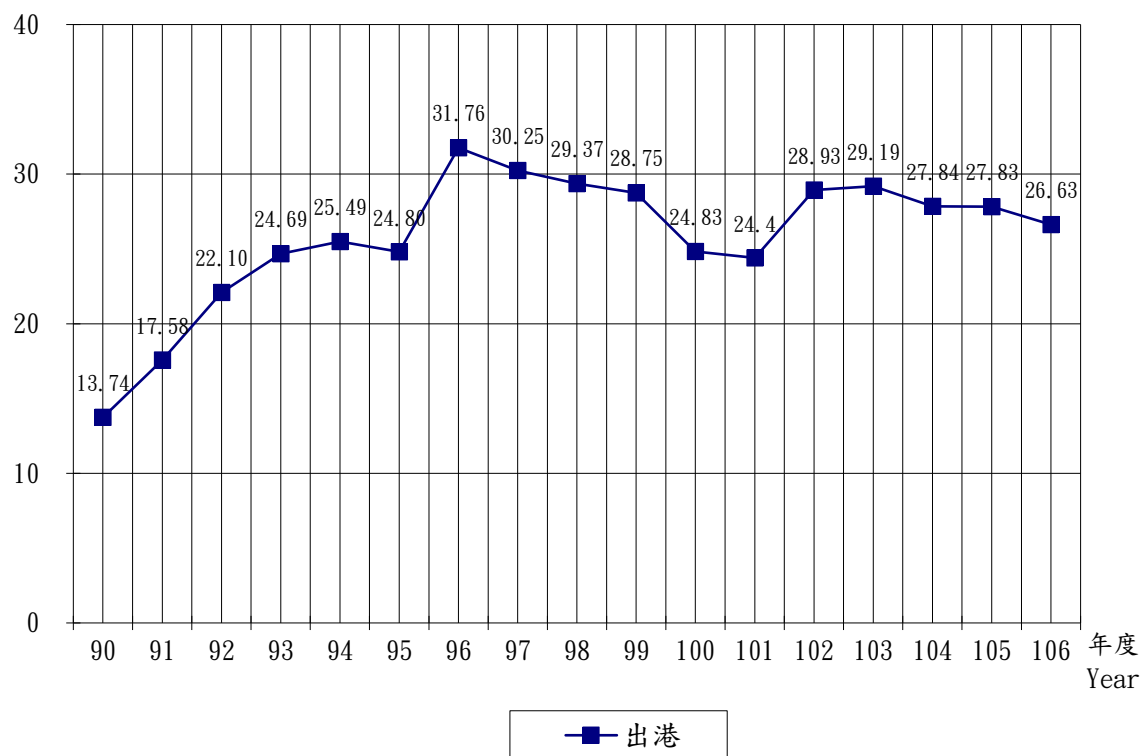
Harbor	Incoming Vessels				Cargo throughput		Cargo Tonnage Handled	
	Vessels	%	Gross Tonnage	%	Tons	%	Revenue Tons	%
Total	41,222	100.00%	863,162,507	100.00%	325,831,408	100.00%	805,036,231	100.00%
Mailiao	2,664	6.46%	59,737,619	6.92%	71,387,674	21.91%	71,361,993	8.86%
Heping	360	0.87%	5,685,468	0.66%	7,959,266	2.44%	8,170,079	1.01%
Kaohsiung	18,773	45.54%	457,791,178	53.04%	116,070,972	35.62%	450,042,900	55.90%
Keelung	5,606	13.60%	95,474,985	11.06%	17,464,002	5.36%	60,191,543	7.48%
Taichung	7,898	19.16%	135,676,755	15.72%	75,348,241	23.12%	128,675,383	15.98%
Hualien	908	2.20%	9,660,305	1.12%	8,665,814	2.66%	8,833,276	1.10%
Suao	526	1.28%	6,679,601	0.77%	4,191,916	1.29%	4,306,890	0.53%
Anping	410	0.99%	3,790,800	0.44%	1,620,189	0.50%	1,646,357	0.20%
Taipei	4,077	9.89%	88,665,796	10.27%	23,123,334	7.10%	71,807,810	8.92%

Port Information Source: Annual Statistical Report of Kaohsiung Port



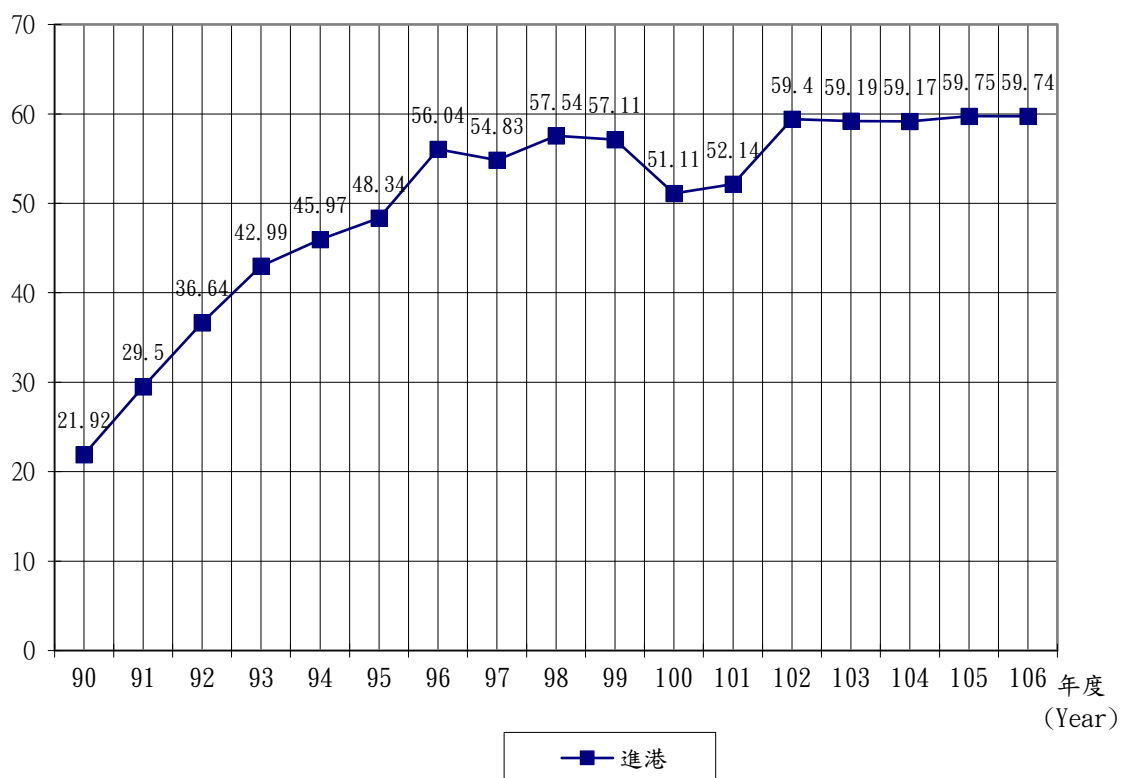
百艘次
(100 Vessels)

出港船舶艘次 Number of Outgoing Vessels



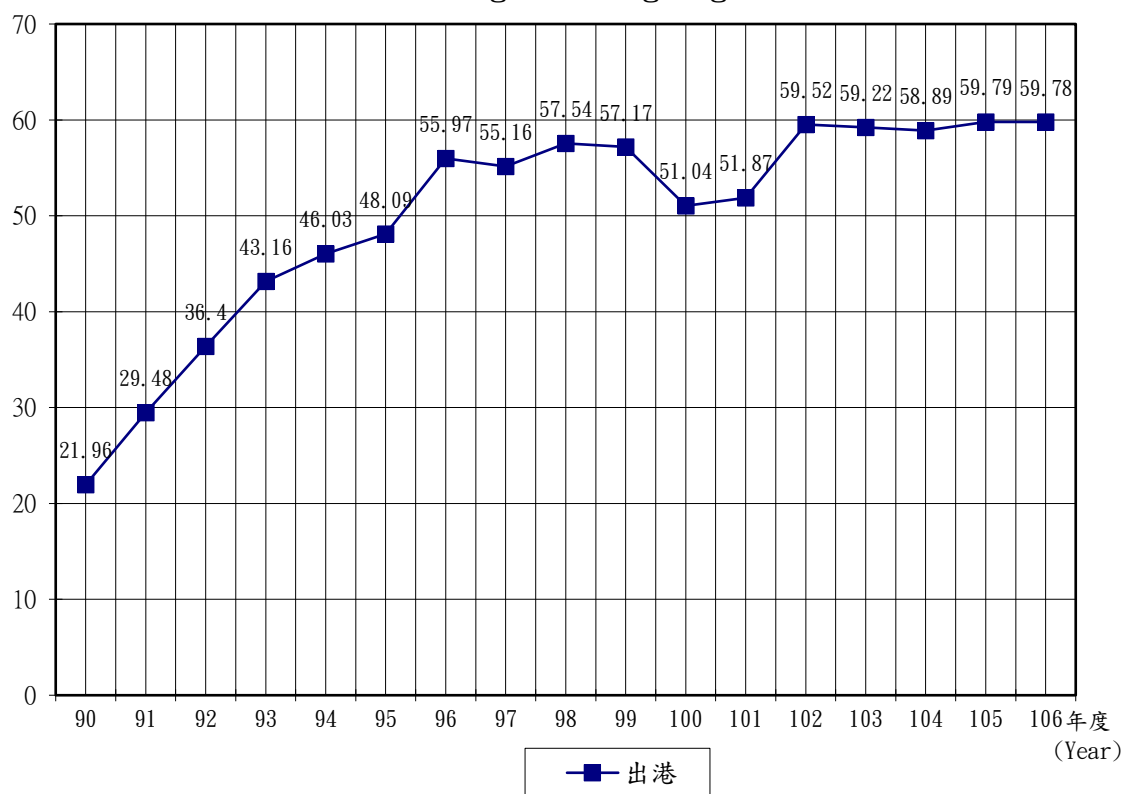
百萬總噸
(Million GTs)

進港船舶總噸位 Gross Tonnage of Incoming Vessels



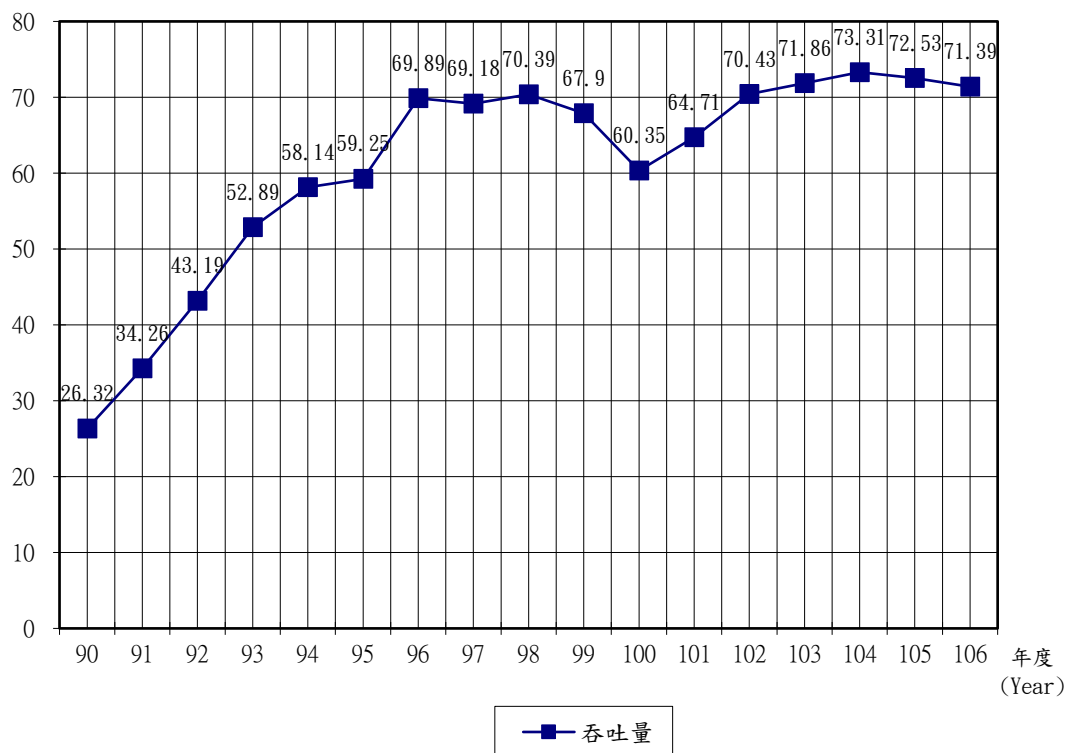
百萬總噸
(Million GTs)

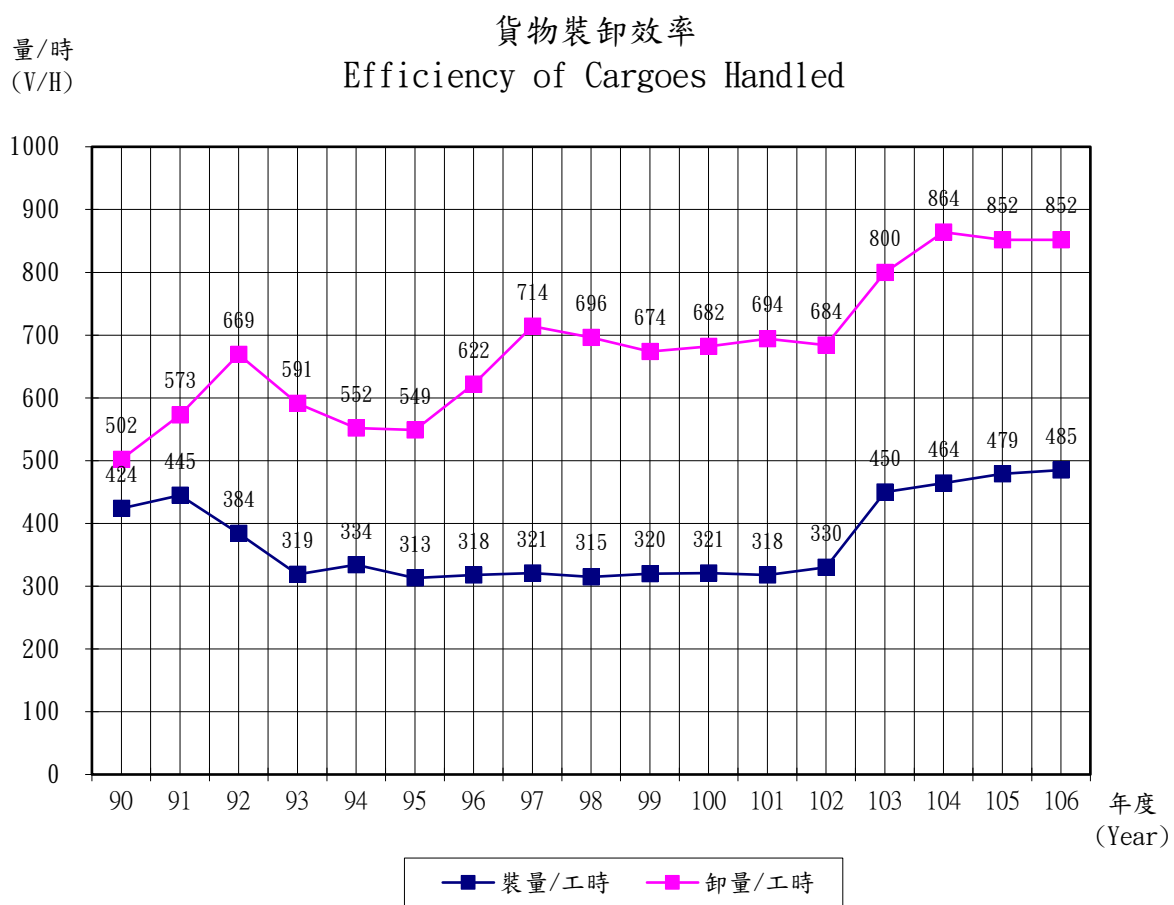
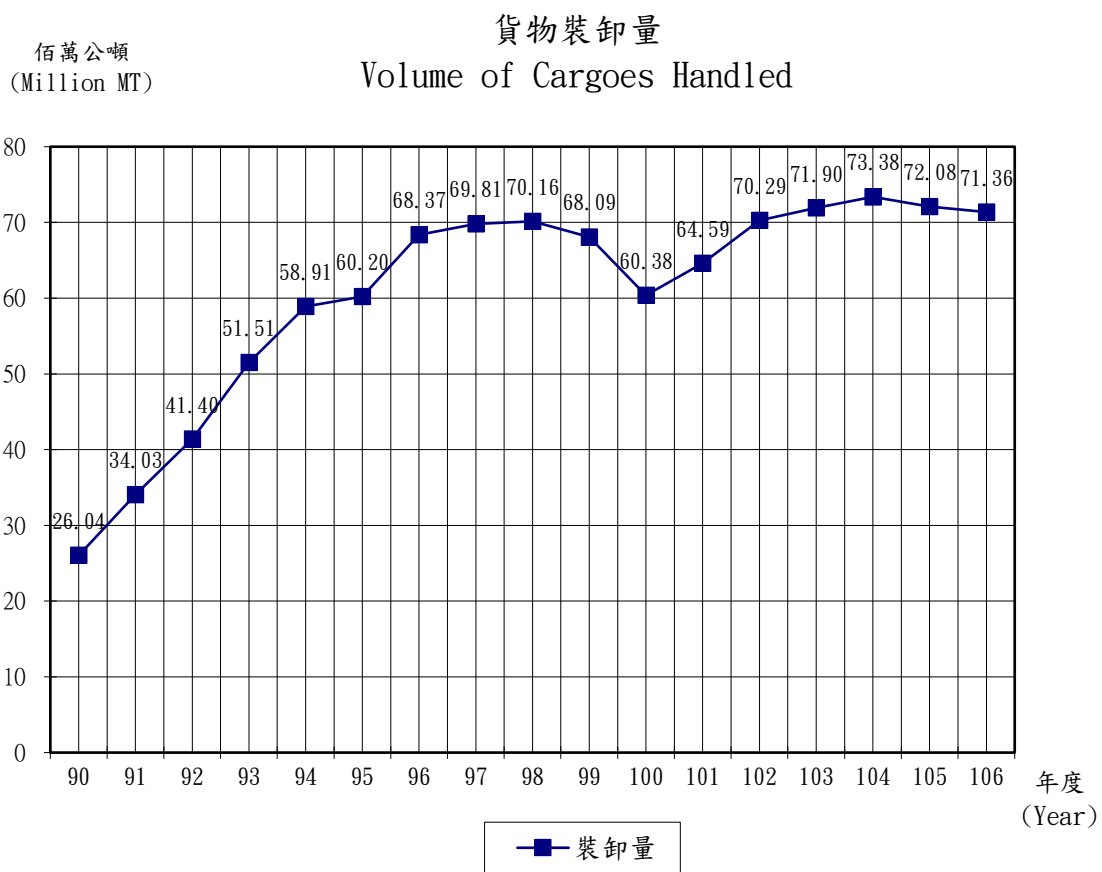
出港船舶總噸位 Gross Tonnage of Outgoing Vessels



百萬公噸
(Million MT)

貨物吞吐量 Amount of Cargoes Throughput







主管機關

經濟部工業局

台北市信義路三段 41-3 號

電話：(02)27541255 傳真：(02)27043757



管理單位

經濟部工業局麥寮工業專用港管理小組

雲林縣麥寮鄉中興村工業路 1535 號

電話：(05)6812533 傳真：(05)6812534



經營單位

麥寮工業區專用港管理股份有限公司

雲林縣麥寮鄉中興村台塑工業園區一號之一

電話：(05)6812766 傳真：(05)6812135