

# 麥寮工業專用港

## 統計要覽

### STATISTICAL ABSTRACT OF MAILIAO HARBOR 2015

經濟部工業局編印

Complied By

Industrial Development Bureau  
Ministry of Economic Affairs  
Taiwan, Republic of China

中華民國一百零五年

# 目 錄

## Contents

頁次(page)

第一篇 基本概況 Basic Overview.....	1
第二篇 提要分析 Summary Analysis.....	3
第三篇 統計表 Statistics Tables	
一、港務 Harbor Management	
(一)船舶 Vessels	
附表 1 進出港輪船地區 .....	22
Incoming and Outgoing Vessels by Area	
附表 2 進港輪船國籍 .....	24
Number of Incoming Vessels by Registered Nationality	
附表 3 進港輪船種類 .....	26
Number of Incoming Vessels by Kind	
附表 4 進港輪船航次 .....	28
Number of Incoming Vessels by Line of Navigation	
附表 5 出港輪船航次 .....	30
Number of Outgoing Vessels by Line of Navigation	
附表 6 進港輪船噸級與在港停泊時間 .....	32
Number of Incoming Vessels by Gross Tonnage and Time of Vessels Mooring in Port	
(二)貨物 Cargoes	
附表 7 進出港貨物國輪外輪承運量 .....	34
Tonnage of Imports & Exports Carried by Domestic and Foreign Vessels	
附表 8 進港貨物(地區別) .....	36
Tonnage of Imports (by Region)	

# 目 錄

## Contents

	頁次(page)
附表 9 出港貨物(地區別) .....	38
Tonnage of Exports (by Region)	
附表 10 進港貨物分類(按月) .....	40
Classification of Imports (by Month)	
附表 11 進港貨物分類(按碼頭) .....	44
Classification of Imports (by Wharf)	
附表 12 出港貨物分類(按月) .....	48
Classification of Exports (by Month)	
附表 13 出港貨物分類(按碼頭) .....	52
Classification of Exports (by Wharf)	
二、棧埠 Stevedoring & Warehousing	
附表 14 本港裝卸業者營運實績(依公司別).....	54
Volume of Cargoes Handled by Stevedoring & Warehousing Companies	
附表 15 裝卸貨物噸量 .....	56
Volume of Cargoes Handled	
附表 16 裝卸貨物效率 .....	58
Efficiency of Cargoes Handled	
附表 17 貨櫃裝卸量 .....	60
Number of Containers Handled	
附表 18 倉儲業務概況 .....	64
Volume of Warehousing	
三、航政監理 Supervising and Administering of navigation	
附表 19 工業專用港區域海事案件 Ship-Wreck...	66

# 目 錄

## Contents

頁次(page)

四、財務 Finance	
附表 20 營業總收入 Total Operating Revenue...	68
附表 21 營業總支出 Total Operating Expense...	70
五、組織及人事 Organization and Personnel matters	
附表 22 港內各作業組織系統表 .....	72
Organization Chart	
附表 23 港內作業人數(依組織別) .....	74
Number of Staff & Workmen of the Bureau and Branch Offices	
附表 24 港內作業人員學歷(依組織別) .....	76
Number of Staff by Education	
附表 25 港內作業人員年齡(依組織別) .....	78
Number of Staff by Age	
六、港埠設施 Harbor Facilities	
附表 26 機具、車、船(依組織別) .....	80
Mechanical, Vehicular & Marine Equipment	
附表 27 港埠工程 .....	84
Harbor Construction	

## 第一篇 基本概況

### 一、港埠基本資料

經濟部為因應我國基礎工業之發展，配合六輕及六輕擴大投資計畫用地需求，以提供國內既有及未來石化產業建廠及遷廠需要，乃規劃於雲林縣外海以抽砂填海造地方式開發雲林離島式基礎工業區，共分有麥寮區、新興區、台西區及四湖區，其中麥寮區之六輕計畫石化工業區係由台塑企業自行進行抽砂填海造地，而麥寮工業專用港（以下簡稱麥寮港）內之專用碼頭，則全為配合六輕計畫所興建。

麥寮港為我國由民營事業投資興建及經營管理港口之首例，其港埠經營完全由台塑企業成立之麥寮工業區專用港管理股份有限公司（以下簡稱港口公司）負責，經濟部工業局於 89 年 10 月 1 日現地派駐成立麥寮工業專用港管理小組（以下簡稱管理小組），以最精簡人力有效扮演監督，執行具有公權力之港務行政管理及協調航政、海關、港警、檢疫及安檢等其他相關公務機關，順利於 90 年 2 月 22 日邀集交通部、財政部、內政部、國防部、海巡署、環保署、農委會及雲林縣政府等各機關現地履勘合格後，已於 90 年 3 月 1 日起開始正式營運。

麥寮港位於東經 120 度 08.9 分、北緯 23 度 46.9 分。北起濁水溪口南側，南臨新虎尾溪口，澎湖水道東側海岸。北距台中港約 40 浬，南離高雄港約 80 浬。港口方向朝西偏南 34°（約介於西南西與西南間），航道於中潮位水深 24 公尺，可供 30 萬噸級船舶進出，為台灣最深之港口。

## 二、港灣及碼頭

### (一)港灣設施

- (1)防波堤：西防波堤長 3,243 公尺，南防波堤長 2,227 公尺。
- (2)迴船池：直徑 900 公尺。
- (3)港外水域：劃設領港登輪區、外航道及到港船舶錨泊區。
- (4)導航設施：進港疊標、堤頭燈塔及航道浮燈標等，用以引導及協助船舶之安全航行。
- (5)信號台設施：船舶交通管理系統(VTS)、海氣象設施及 DSB 通信設備等，用以管制船舶航行與進出港。
- (6)港勤船渠：供港勤船舶靠泊、加油及加水等使用。
- (7)港務港勤大樓：提供政府單位、港區作業單位、港口公司及信號台辦公或作業所需。
- (8)機工場及滑道：供港勤船舶維修、檢驗及保養所需。

### (二)碼頭設施

營運中 20 座專用碼頭分別由台塑石化公司及麥寮汽電公司自行投資興建及維護管理。

## 三、設備概況

### (一)港勤船舶

由港口公司購置拖船 11 艘、交通船 1 艘及什用船 1 艘，用以協助船舶進出港口及靠泊碼頭所需。

### (二)裝卸設備

各碼頭依裝卸需求由裝卸作業單位購置裝卸機具，諸如卸料臂、卸煤機、貨櫃起重機、貨櫃吊運機及空櫃堆高機等，以提供裝卸服務。

## 第二篇 提要分析

### 一、營運實績

#### (一) 進出港船舶

(1) 進港船舶：104年1月至12月進港船舶合計2,783艘次，5,917萬3,618總噸位，較103年減少137艘次，減少率為4.69%，總噸位則減少1萬4,153總噸位，減少率為0.02%，若與90年比較，則增加1,412艘次及增加3,725萬2,915總噸位，增加率分別為102.99%與169.94%。

(2) 出港船舶：104年1月至12月出港船舶合計2,784艘次，5,888萬7,018總噸位，較103年減少135艘次，減少率為4.62%，總噸位則減少33萬5,569總噸位，減少率為0.57%，若與90年比較，則增加1,410艘次及增加3,692萬3,852總噸位，增加率分別為102.62%與168.12%。

(二) 貨物吞吐量：104年全年進港貨物為5,057萬2,395公噸、出港貨物為2,273萬4,394公噸，吞吐量為7,330萬6,789公噸，較上年增加144萬7,916公噸，增加率為2.01%。若與90年比較，則增加4,698萬6,743公噸，增加率為178.52%。

(三) 貨物裝卸量：104年1月至12月全港裝卸量合計為7,337萬9,445公噸，較上年增加147萬8,126公噸，增加率為2.06%。若與90年比較，則增加4,733萬8,017公噸，增加率為181.78%；另104年區內貨主以台塑石化公司5,791萬3,494公噸為最多，占78.92%，其次為麥寮汽電公司563萬413公噸，占7.67%，再次為台塑公司355萬

1,263 公噸，占 4.84%。

(四)謹刊列臺灣地區各港口 104 年營運量比較表 (如表 1)，以供參考。

## 二、港務統計資料

104 年度進出港船舶及貨物，依各類統計條件說明如次：

### (一)船舶

- (1)進港船舶國籍：以香港 464 艘次為最多，其次為巴拿馬 301 艘次，再次為中華民國 260 艘次。
- (2)進港船舶種類：以油輪 867 艘次為最多，其次為化學輪 575 艘次，再次為液化輪 409 艘次。
- (3)進港輪船航次：以國內而言，來自於高雄港 55 艘次為最多。以國外而言，則以中國 1,414 艘次為最多，其次為南韓 268 艘次，再次為菲律賓 184 艘次。
- (4)出港輪船航次：以國內而言，前往高雄 79 艘次為最多。以國外而言，則以中國 1,145 艘次為最多，其次為新加坡 367 艘次，再次為菲律賓 218 艘次。
- (5)進港船舶噸級：進港船舶每艘平均 2 萬 1,263 總噸，較上年度增加 993 總噸，其中有 1,022 艘次船舶總噸位介於 1,000～4,999 總噸位為最多，其次船舶總噸位介於 5,000～9,999 總噸位為 624 艘次，再次船舶總噸位介於 20,000～39,999 總噸位為 385 艘次。
- (6)在港停泊時間：出港船舶每艘平均停泊 37.24 小時，較上年度增加 2.31 小時，其中有 1,281 艘次以船舶停泊 25～48 小時為最多，其次為 24 小時以內者 1,048 艘次，再次為 49～72 小時者 217 艘次。

### (二)貨物

- (1)船舶承運量：國輪承運 268 萬 6,614 公噸，占全部 3.66%，較上年度增加 73 萬 9,081 公噸，成長 37.95%。外輪承運 7,062 萬 175 公噸，占全部 96.34%，較上年度增加 70 萬 8,835



公噸，成長 1.01%。

(2)貨物來源地：以沙烏地阿拉伯 1,000 萬 4,770 公噸為最多，占 19.78%，其次為澳洲 866 萬 8,361 公噸，占 17.14%，再次為科威特 781 萬 1,410 公噸，占 15.45%。

(3)貨物運達地：以中國大陸 630 萬 8,794 噸為最多，占 27.75%，其次為菲律賓 468 萬 7,173 公噸，占 20.62%，再次為新加坡 358 萬 5,546 公噸，占 15.77%。

(4)進港貨物類別：以非金屬礦物製品 3,323 萬 5,248 公噸為最多，占 65.72%，其次為礦產品 1,537 萬 1,350 公噸，占 30.39%，再次為化學品 150 萬 1,093 公噸，占 2.97%。

(5)出港貨物類別：以非金屬礦物製品 1,238 萬 6,825 公噸為最多，占 54.48%，其次為化學品 714 萬 8,852 公噸，占 31.45%，再次為其他什貨 284 萬 944 公噸，占 12.50%。

(6)進港貨物卸貨碼頭：以西三碼頭 2,099 萬 1,121 公噸為最多，占 41.51%，其次為西二碼頭 852 萬 1,707 公噸，占 16.85%，再次為東四碼頭 667 萬 7,721 公噸，占 13.20%。

(7)出港貨物裝貨碼頭：以西一碼頭 381 萬 1,244 公噸為最多，占 16.76%，其次為東七碼頭 364 萬 8,924 公噸，占 16.05%，再次為東八碼頭 343 萬 33 噸，占 15.09%。

### 三、棧埠統計資料

104 年度棧埠裝卸情形，依各類統計條件說明如次：

(1)貨主：以台塑石化公司 5,791 萬 3,494 公噸為最多，占 78.92%，其次為麥寮汽電公司 563 萬 413 公噸，占 7.67%。

(2)裝卸貨物：裝貨部份以管道貨 2,151 萬 7,969 公噸為最多，占裝貨量 95.37%。卸貨部份以管道貨 3,510 萬 6,397 公噸為最多，占 69.08%，其次為燃煤 1,402 萬 9,669 公噸，占 27.61%。

(3)裝卸效率：平均每小時裝貨量 464 公噸，較上年度增加 3.11%。平均每小時卸貨量 864 公噸，較上年度增加 8.00%。

(4)貨櫃：自 103 年 05 月份起未再有貨櫃裝卸業務。

#### 四、航政統計資料

104 年麥寮港海事案件計 5 件，較上年增加 4 件。

#### 五、財務統計資料

港口公司及裝卸單位 104 年營業收入總計 43.79 億元，較上年減少 0.48 億元，負成長 1.08%。營業支出 29.47 億元，較上年減少 1.15 億元，負成長 3.77%。

#### 六、組織及人事統計資料

(1)管理小組：執行具有公權力之港務行政管理及協調航政、海關、港警、檢疫及安檢等其他相關公務機關，合計 7 人（含主任），較上年度減少 1 人。

(2)港口公司：負責麥寮港之經營與管理，設有管理組、航管組、港安組及工程組，由航管組、港安組及工程組負責現地港務業務，合計 41 人，與上年度相同。

(3)港灣作業機構：麥寮港之拖船操作業務係由港口公司委託台塑海運公司執行，另引水人接送、帶解纜、船舶垃圾清理及港區海面垃圾清理等業務由外包廠商負責辦理，合計 132 人，較上年度減少 6 人。

(4)棧埠作業機構：由區內興辦工業人委託台塑石化公司碼槽處執行專用碼頭之裝卸作業，另攔油索帶解、加油及加水等作業

由外包廠商負責辦理，合計 478 人，較上年度減少 37 人。

### 七、港埠設施統計資料

(1)港棧設施：20 座專用碼頭及 2 處貨櫃堆置場。

(2)船舶：拖船 11 艘、交通船 4 艘及什用船 3 艘等 18 艘港勤船舶，與上年度相同。

(3)機具：貨櫃起重機、貨櫃吊運機、空櫃堆高機、起重機及堆高機等 20 台機具，較上年度減少 3 台。

(4)車輛：拖車、拖板車及工程車等 64 輛，與上年度相同。

表 1 104 年度台灣地區各港口營運量比較

港口別	進港船舶				吞吐量		貨物裝卸量	
	艘次	%	總噸位	%	公噸	%	計費噸	%
總計	40,355	100.00%	811,994,445	100.00%	321,206,393	100.00%	801,775,237	100.00%
麥寮港	2,783	6.90%	59,173,618	7.29%	73,306,789	22.82%	73,379,445	9.15%
和平港	263	0.65%	5,090,579	0.63%	7,218,291	2.25%	7,010,190	0.87%
高雄港	17,210	42.65%	416,331,748	51.27%	110,901,929	34.53%	450,383,327	56.17%
基隆港	5,924	14.68%	96,720,450	11.91%	19,366,624	6.03%	62,478,862	7.79%
台中港	7,794	19.31%	127,691,716	15.73%	73,633,497	22.92%	121,916,825	15.21%
花蓮港	1,270	3.15%	13,234,810	1.63%	12,015,661	3.74%	12,550,856	1.57%
蘇澳港	603	1.49%	7,067,862	0.87%	4,890,228	1.52%	4,895,670	0.61%
安平港	366	0.91%	2,723,812	0.34%	1,096,635	0.34%	1,163,149	0.15%
台北港	4,142	10.26%	83,959,850	10.34%	18,776,739	5.85%	67,996,913	8.48%

商港資料來源：高雄港統計年報

## Chapter I. Basic Overview

### 1. Basic Harbor Information

In response to basic domestic development, to co-op with the land necessity of the Six Naphtha Cracking Complex Project and its expansion, and to domestically provide existing and future necessities for the construction and relocation of petrochemical business. The Ministry of Economic Affairs has planned to develop the Yunlin offshore Primary Industry Zone by dredging sea sand for landfill to create offshore lands. The lands created include Mailiao, Hsin Hsing, Tai Hsi, and Ssu Hu. Mailiao area is the petrochemical zone under the Sixth Naphtha Cracking Complex Project which was proceeded by the Conglomerates of Formosa Plastic by dredging sea sand for landfill. The special purpose wharves inside the industrial harbor of Mailiao (hereinafter referred to as Mailiao Harbor) were all constructed to cooperate with the Sixth Naphtha Cracking Complex Project.

Mailiao Harbor was the first domestic private enterprise constructed, operated and managed harbor. The harbor operation is run by the Mailiao Harbor Administration Corporation (hereinafter referred to as Mailiao Harbor Corporation) established by Formosa Plastics Groups. The Industrial Development Bureau of the Ministry of Economic Affairs constructed the management groups for Mailiao exclusive industrial harbor (hereinafter referred to as Administration groups) on Oct. 1, 2000, and used the most streamlined manpower to supervise and implement harbor administrative management, and coordinate the navigation & shipping supervision, customs, harbor police, quarantine, security inspection and other relevant government authorities. After an inspection approval was carried out by the Ministry of Transportation and

Communications, the Ministry of Finance, the Ministry of the Interior, the Ministry of National Defense, the Department of Coast Guard, the Department of Environment Protection, the Committee of Agriculture Affairs and the Government of Yunlin County on Feb. 22, 2001; it started its official operation on Mar. 1, 2001.

Mai Liao Harbor is located at longitude 120°08.9' E, latitude 23°46.9'. It is bordered to the north by Chuoshui Stream and to the south by Hsinhuwei Stream. The harbor lies 40 nautical miles south of Taichung and 80 nautical miles north of Kaohsiung. The harbor direction faces west with an inclination of 34 degrees to the south. The shipping channel is 24 meters deep at mean tide and can accommodate 300,000 DWT class VLCC, making it Taiwan's deepest harbor.

## 2. Harbor and Wharf

### A. Harbor Facilities

- (1) Breakwater: The west breakwater is 3,243 meters long, and the south breakwater is 2,227 meters long.
- (2) Turning basin: 900 meters in diameter.
- (3) Outer waters: The outer waters are divided into a Pilot Station, outer navigation channel and anchorage.
- (4) Aids to navigation: Include ranges, breakwater lighthouses and navigational channel buoys to assist in guiding ships into and out of the harbor.
- (5) Signal station: Include VTS (vessel traffic services), climate & sea conditions facilities and DSB communication equipment.
- (6) Harbor craft basin: For the wharfing and servicing (oil and water) of harbor craft.

(7) Harbor administration building: Provides government agencies, harbor operating unit, Mailiao Harbor Corporation and signal station or operational demands.

(8) Ship & machinery repair works and slipway: For repair, inspection and maintenance of harbor craft.

## B. Wharf Facilities

The 20 operating appropriate berths respectively are constructed, operated and managed by Formosa Petrochemical Corporation and Mailiao Power Corporation.

## 3. Equipment Overview

### A. Harbor Vessels

Mailiao Harbor Corporation has purchased 11 tug boats, 1 shuttle boat and 1 miscellaneous boat to assist the incoming/outgoing vessels and docking requirements.

### B. Loading/Unloading Equipment

According to the loading/unloading demands, various wharfs' loading/unloading operation unit will purchase the loading/unloading equipment, such as unloading arm, coal unloader, container cranes, container lifting machine, and empty container forklift to provide the loading/unloading services.

## Chapter II. Summary Analysis

### 1. Operation Performance

#### A. Incoming/Outgoing Vessels

(1) Incoming Vessels: A total of 2,783 vessels called at Mailiao Harbor in 2015 and amounted to a gross tonnage of 59,173,618. The number of vessels had a decrease of 137 (4.69%), and the gross tonnage decreased 14,153GT (0.02%), compared to the previous year. Compared to 2001, the number of the vessels had an increase of 1,412 (102.99%) and the gross tonnage increased 37,252,915 GT (169.94%).

(2) Outgoing Vessels: A total of 2,784 vessels called at Mailiao Harbor in 2015 and amounted to a gross tonnage of 58,887,018. The number of vessels had a decrease of 135 (4.62%), and the gross tonnage decreased 335,569 GT (0.57%), compared to that of the previous year. Compared to 2001, the number of vessels had an increase of 1,410 (102.62%) and the gross tonnage increased 36,923,852 GT (168.12%).

B. Cargo throughput: At Mailiao Harbor, the imports reached 50,572,395 MT in 2015, and the exports reached 22,734,394 MT. The amount of cargo throughput reached 73,306,789 MT, 1,447,916 MT (2.01%) more than that of the previous year. It had an increase of 46,986,743 MT (178.52%) over 2001.

C. Loading and Unloading: In 2015 the amount of loading and unloading reached 73,379,445 revenue tons, 1,478,126 MT (2.06%) more than that

of the previous year. Compared to 2001, the amount of loading and unloading had an increase of 47,338,017 MT (181.78%). In addition, Formosa Petrochemical Corporation was the biggest owner of cargo in 2015, 57,913,494 MT (78.92%), followed by Mailiao Power Corporation's 5,630,413 MT (7.67%), and Formosa Plastics Corporation's 3,551,263 MT (4.84%).

D. The business volume comparison table of Taiwan harbors in 2015 is listed for reference (See Table 1).

## 2. Harbor Statistical Information

The 2015 incoming/outgoing vessels and cargo are described in accordance with the various statistical conditions as follows:

### A. Vessels

- (1) Incoming Vessels by Nationality: Most incoming vessels came from Hong Kong, 464, followed by Panama, 301 and Republic of china, 260.
- (2) Incoming Vessels by Kind: There are 867 tankers, followed by 575 chemical tankers, and 409 liquid chemical tankers.
- (3) Incoming Vessels by Line of Navigation: Domestically, there are 55 ships from Kaohsiung Harbor. Internationally, there are 1,414 ships from China, followed by 268 ships from South Korea and 184 ships from Philippine.
- (4) Outgoing Vessels by Line of Navigation: Domestically, there are 79 ships going to Kaohsiung. Internationally, there are 1,145 ships going to China, followed by 367 ships going to Singapore and 218 ships going to Philippine.
- (5) Incoming Vessels by Gross Tonnage: On average, each incoming vessel



has 21,263 GT, compared to 2014, the gross tonnage had an increase of 993, of which there are 1,022 vessels between 1,000 GT~4,999 GT, 624 vessels between 5,000 GT~9,999 GT, and 385 vessels between 20,000 GT~39,999 GT.

(6) Time of Vessels Mooring in port: The average number of mooring hours of the outbound vessels is 37.24 which is 2.31 hours more than in 2014, of which there are 1,281 vessels mooring for 25~48 hours, followed by 1,048 vessels mooring in 24 hours, and 217 vessels mooring for 49~72 hours.

## B. Cargo

(1) Vessels Carried Volume: The domestic vessel carried volume is 2,686,614 tons (3.66%) and 739,081 tons more than in 2014; it has a growth of 37.95%. The foreign vessels cargo volume is 70,620,175 tons (96.34%), and 708,835 tons more than in 2014; it has a growth of 1.01%.

(2) Cargo Origin: Most cargo originates from Saudi Arabia. It has 10,004,770 MT (19.78%), followed by Australia's 8,668,361 MT (17.14%), and Kuwait's 7,811,410 MT (15.45%).

(3) Cargo Destination: Most cargo is destined for Mainland China with 6,308,794 MT(27.75%), followed by Philippine's 4,687,173 MT (20.62%), and Singapore's 3,585,546 MT (15.77%).

(4) Classification of Imports: The non-metallic mineral products are the most, 33,235,248 MT (65.72%), followed by 15,371,350 MT of mineral products (30.39%), and 1,501,093 MT of chemical products (2.97%).

(5) Classification of Exports: The non-metallic mineral products are the most, 12,386,825 MT (54.48%), followed by 7,148,852 MT of chemical products (31.45%), and 2,840,944 MT of general merchandise products (12.50%).

(6) Unloading Berths of Imports: Berth West-3 has the most unloading of imports, 20,991,121 MT (41.51%), followed by Berth West-2, which has 8,521,707 MT (16.85%), and Berth East-4, which has 6,677,721 MT (13.20%).

(7) Loading Berths of Exports: Berth West-1 has the most loading of exports, 3,811,244 MT (16.76%), followed by Berth East-7 which has 3,648,924 MT (16.05%), and Berth East-8, which has 3,430,033 MT (15.09%).

### C. Stevedoring & Warehousing Statistical Information

The 2015 Stevedoring & Warehousing situations are described in accordance with the various statistical conditions as follows:

(1) Owner of Cargo: Formosa Petrochemical Corporation is 57,913,494 MT (78.92%) of the most, followed by Mailiao Power Corporation's 5,630,413 MT (7.67%).

(2) Cargo Handling: For cargo loading, the most is pipe line cargo, 21,517,969 MT (95.37%). For cargo unloading, the most is pipe line cargo, 35,106,397 MT (69.08%), followed by 14,029,669 MT of coal (27.61%).

(3) Cargo Handling Efficiency: The average loading volume is 464 MT per hour, which is 3.11% more than 2014. The average unloading

volume is 864 MT per hour, which is 8.00% more than 2014.

(4) Container: There are no Loading/unloading container operations since May 2014.

#### 4. Navigation & Shipping Supervision Statistical Information

Five marine accidents were found in Mailiao Harbor in 2015, 4 accidents more than the previous year.

#### 5. Financial Statistical Information

The 2015 total operation revenue of Mailiao Harbor Corporation and the loading/unloading units was 4.379 billion, which is 0.048 billion less than in 2014; a negative growth of 1.08%. The operation expenses were 2.947 billion, which is 0.115 billion less than in 2014; a negative growth of 3.77%.

#### 6. Organization and Personnel Statistical Information

(1) Administration Groups: implement harbor administrative management, and coordinate the navigation & shipping supervision, customs, harbor police, quarantine, security inspection and other relevant government authorities. There is a total of 7 people (including the chief), one person less than the previous year.

(2) Mailiao Harbor Corporation: responsible for the operation and management of Mailiao Harbor; there is a administration section, a port control section, a port security section and an engineering section set up. The on-site harbor affairs are run by the port control section, port security section and engineering section, which has a total of 41 people, the same

as the previous year.

(3) Harbor Operators: trailer operation of Mailiao Harbor is implemented by Formosa Plastics Marine Corporation, commissioned by Mailiao Harbor Corporation, and the coast guard pick up, line handling, vessels trash cleaning and harbor sea surface trash cleaning, etc. affairs handled by the outsourced suppliers. It has a total of 132 people, 6 persons less than the previous year.

(4) Berths Operators: district industrial personnel commissioned Formosa Petrochemical Corporation implement appropriate wharf loading/unloading operations. The oil boom unmooring, oil and water servicing operations are handled by the outsourced suppliers; it has a total of 478 people, 37 people less than the previous year.

## 7. Harbor Facilities Statistical Information

(1) Harbor Facilities: 20 specialized wharves and 2 container piling sites.

(2) Vessels: 18 harbor vessels, including: 11 tug boats, 4 shuttle boats and 3 miscellaneous boats, the same as the previous year.

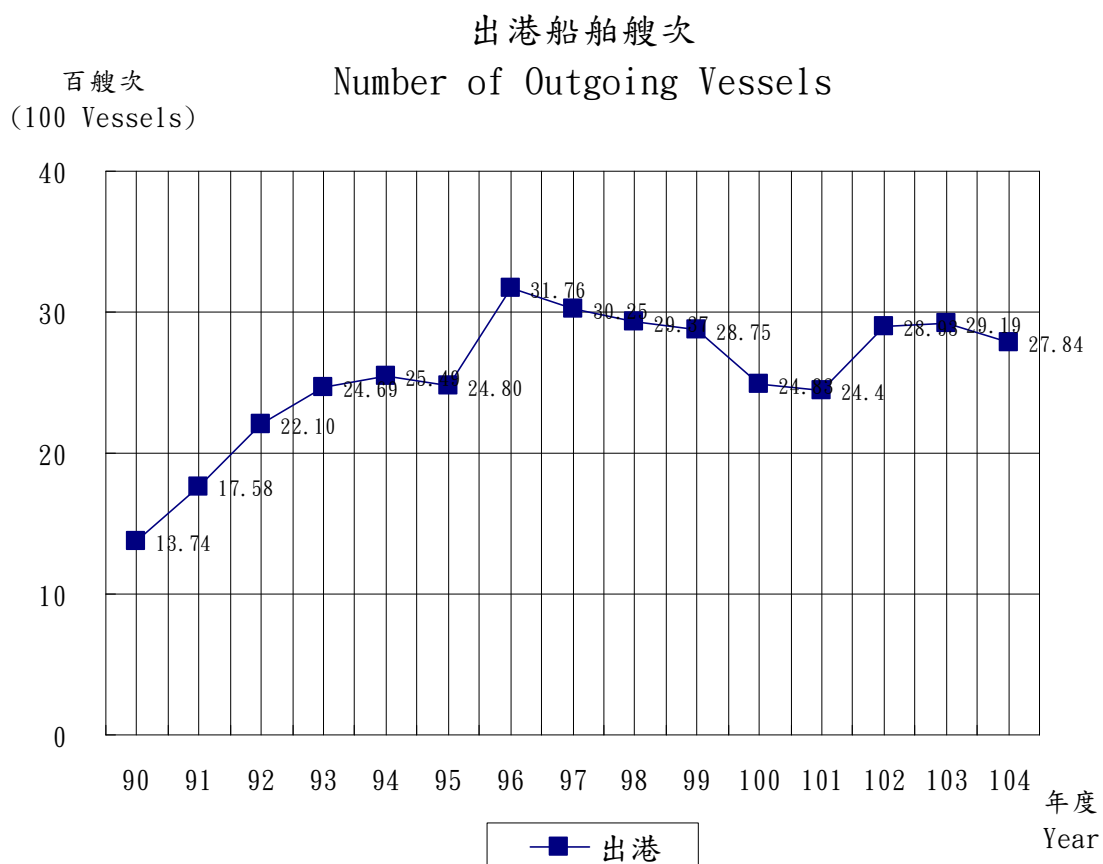
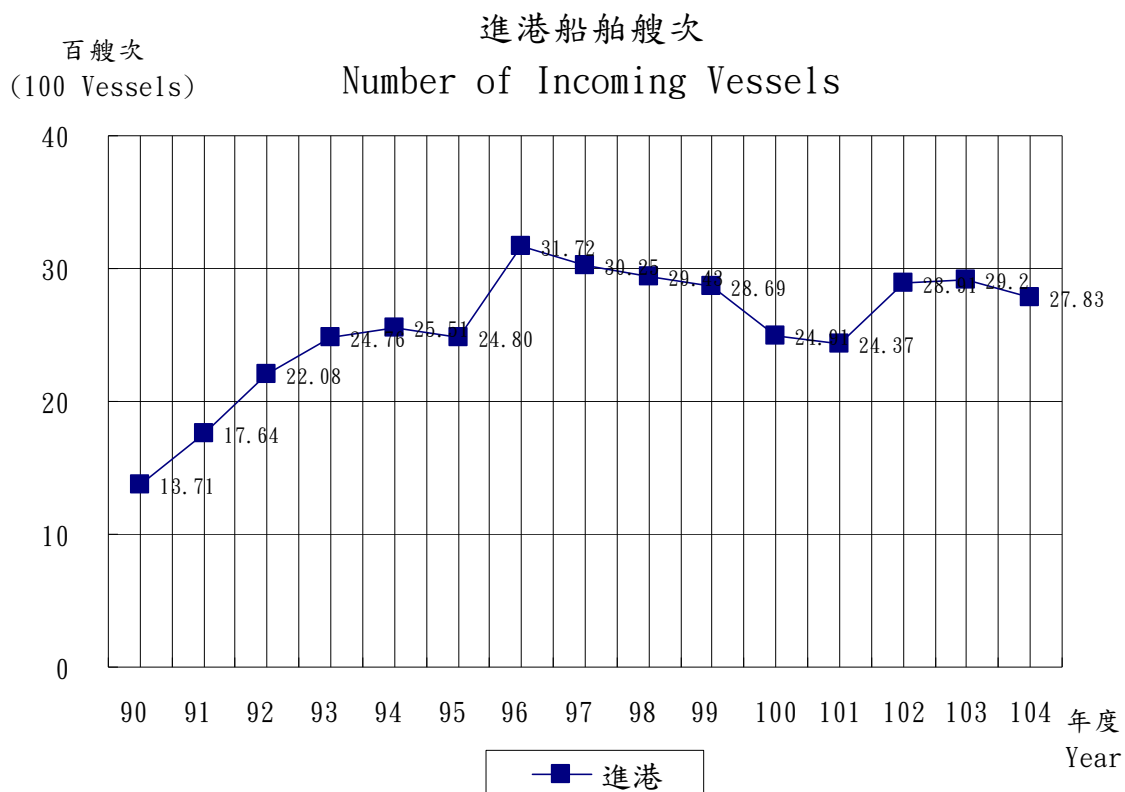
(3) Machines and Instruments: 20 machines and instruments, including: container cranes, container lifting machines, empty container liftfork, cranes and fork lift trucks, there are three machines less than the previous year.

(4) Vehicles: 64 trailers and engineering vehicles, the same as the previous year.

Table 1: The business volume comparison table of Taiwan harbors in 2015

Harbor	Incoming Vessels				Cargo throughput		Cargo Tonnage Handled	
	Vessels	%	Gross Tonnage	%	Tons	%	Revenue Tons	%
Total	40,355	100.00%	811,994,445	100.00%	321,206,393	100.00%	801,775,237	100.00%
Mailiao	2,783	6.90%	59,173,618	7.29%	73,306,789	22.82%	73,379,445	9.15%
Heping	263	0.65%	5,090,579	0.63%	7,218,291	2.25%	7,010,190	0.87%
Kaohsiung	17,210	42.65%	416,331,748	51.27%	110,901,929	34.53%	450,383,327	56.17%
Keelung	5,924	14.68%	96,720,450	11.91%	19,366,624	6.03%	62,478,862	7.79%
Taichung	7,794	19.31%	127,691,716	15.73%	73,633,497	22.92%	121,916,825	15.21%
Hualien	1,270	3.15%	13,234,810	1.63%	12,015,661	3.74%	12,550,856	1.57%
Suao	603	1.49%	7,067,862	0.87%	4,890,228	1.52%	4,895,670	0.61%
Anping	366	0.91%	2,723,812	0.34%	1,096,635	0.34%	1,163,149	0.15%
Taipei	4,142	10.26%	83,959,850	10.34%	18,776,739	5.85%	67,996,913	8.48%

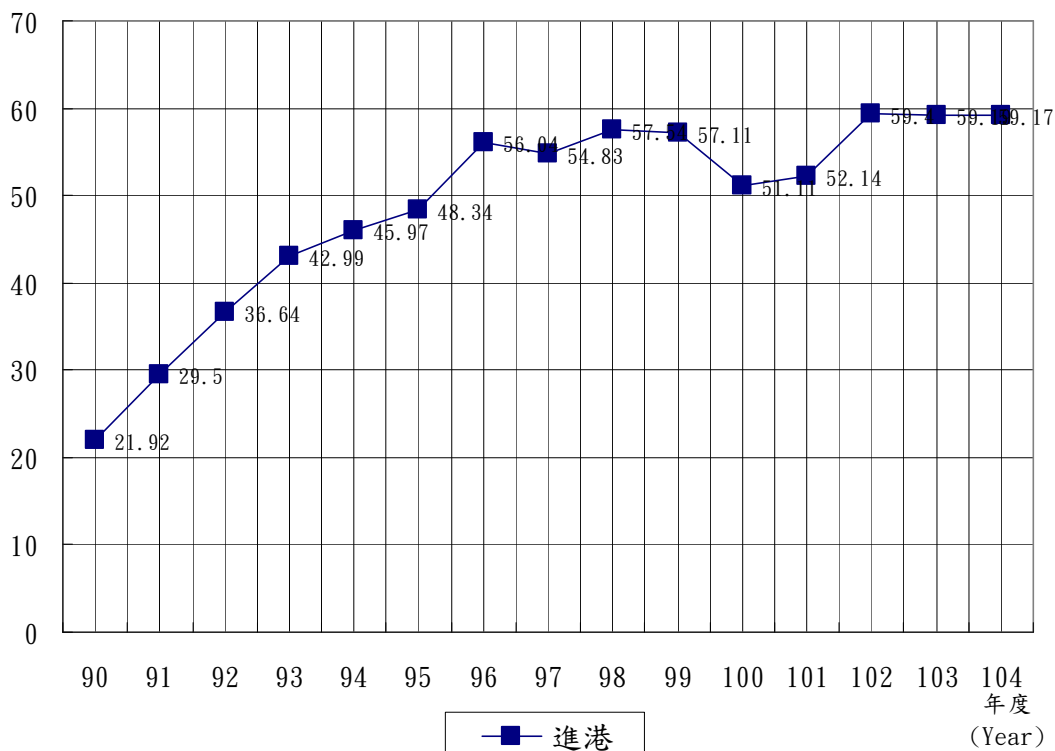
Port Information Source: Annual Statistical Report of Kaohsiung Port



百萬總噸  
(Million GTs)

### 進港船舶總噸位

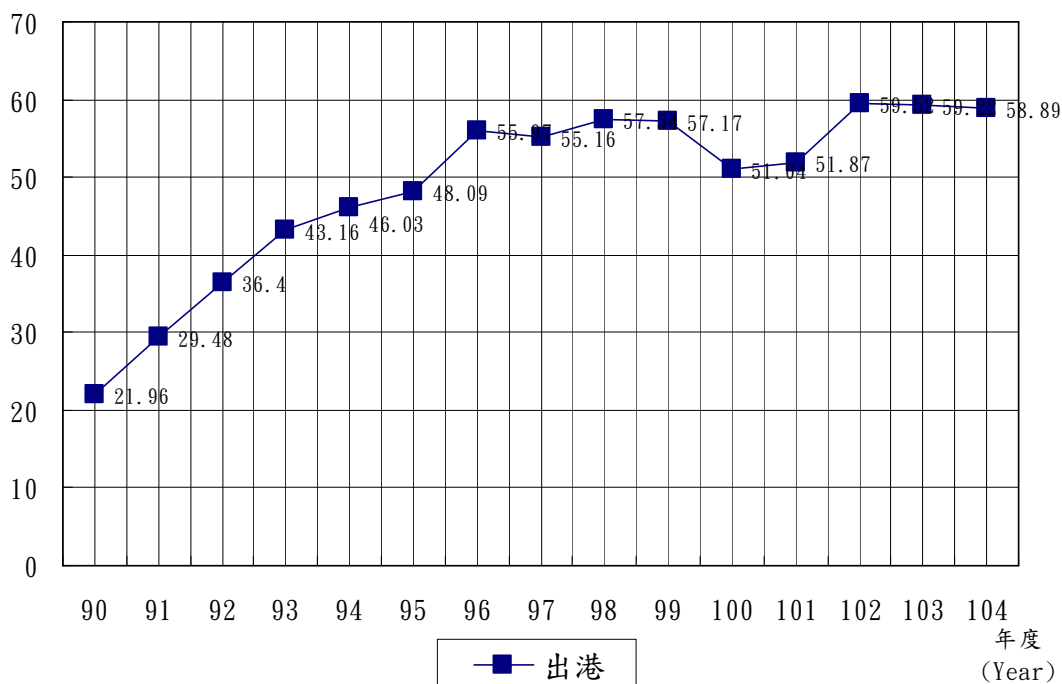
### Gross Tonnage of Incoming Vessels



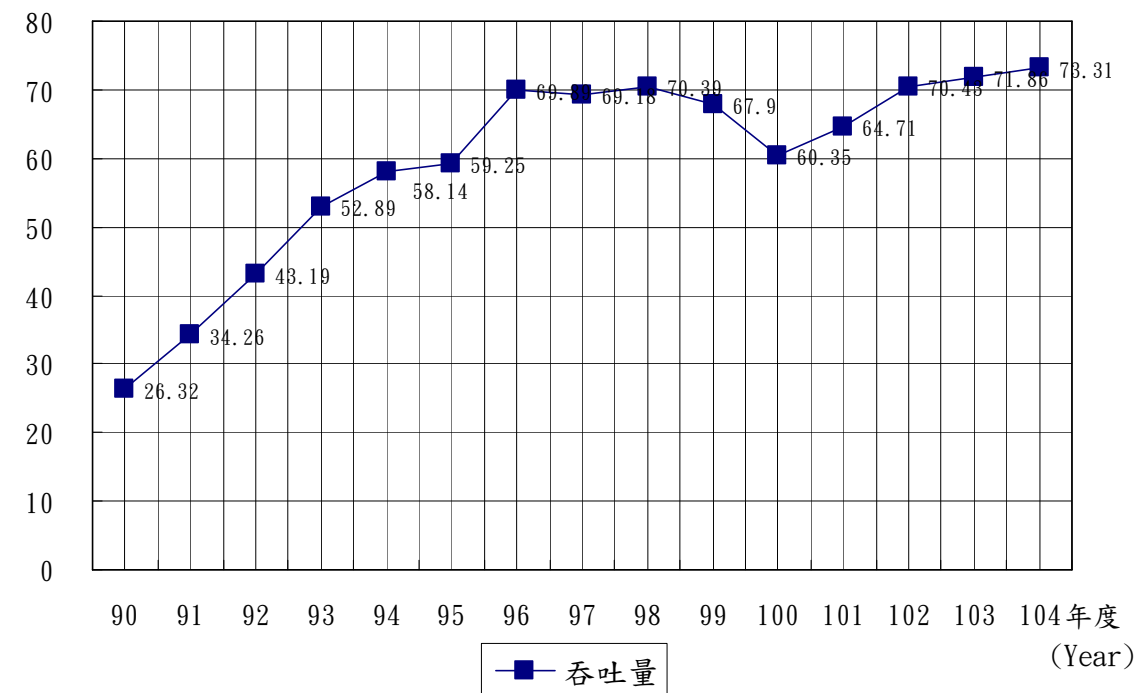
百萬總噸  
(Million GTs)

### 出港船舶總噸位

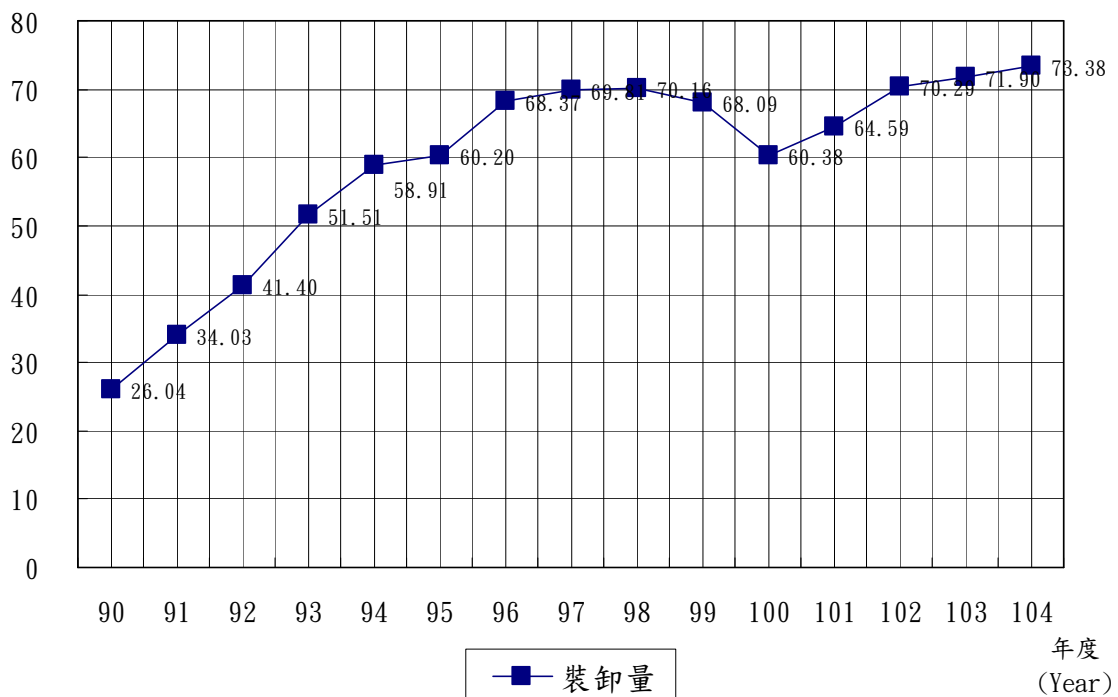
### Gross Tonnage of Outgoing Vessels



貨物吞吐量  
Amount of Cargoes Throughput



貨物裝卸量  
Volume of Cargoes Handled

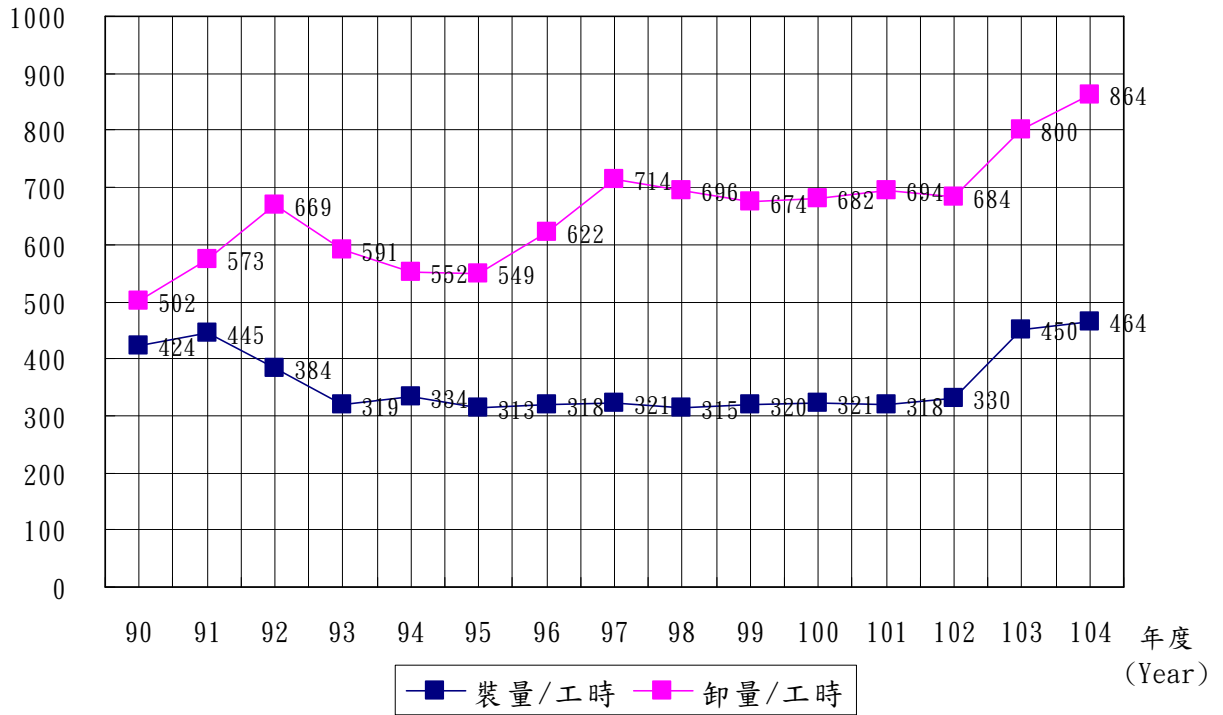




# 貨物裝卸效率

量/時  
(V/H)

## Efficiency of Cargoes Handled



### 第三篇 統計要覽

#### 一、港務

#### 附表一 進出港輪船運輸量

艘次單位：次  
總噸位單位：噸

年 (月) 別 Year and Month	進 港					
	總 計		國 內		國 外	
	Total		Domestic		Foreign	
	艘 次	總 噸 位	艘 次	總 噸 位	艘 次	總 噸 位
	V.	G. T.	V.	G. T.	V.	G. T.
2001	1,371	21,920,703	119	1,042,767	1,252	20,877,936
2002	1,764	29,501,874	201	1,980,906	1,563	27,520,968
2003	2,208	36,644,322	317	2,499,394	1,891	34,144,928
2004	2,476	42,992,935	473	2,439,657	2,003	40,553,278
2005	2,551	45,970,534	432	2,775,256	2,119	43,195,278
2006	2,480	48,335,727	244	2,537,218	2,236	45,798,509
2007	3,172	56,044,562	198	2,211,301	2,974	53,833,261
2008	3,025	54,825,457	99	1,089,860	2,926	53,735,597
2009	2,943	57,535,569	109	859,869	2,834	56,675,700
2010	2,869	57,105,381	138	1,280,329	2,731	55,825,052
2011	2,491	51,112,185	122	1,134,164	2,369	49,978,021
2012	2,437	52,143,234	119	1,045,506	2,318	51,097,728
2013	2,891	59,397,052	120	1,080,033	2,771	58,317,019
2014	2,920	59,187,771	112	821,171	2,808	58,366,600
2015	2,783	59,173,618	89	561,970	2,694	58,611,648
一 月(Jan.)	240	4,505,373	6	23,527	234	4,481,846
二 月(Feb.)	230	4,813,061	5	50,315	225	4,762,746
三 月(Mar.)	244	4,946,315	8	123,304	236	4,823,011
四 月(Apr.)	236	4,807,218	12	111,322	224	4,695,896
五 月(May)	246	5,249,841	7	14,453	239	5,235,388
六 月(June)	221	5,435,005	12	47,885	209	5,387,120
七 月(July)	220	4,755,096	8	43,677	212	4,711,419
八 月(Aug.)	207	4,745,868	6	45,759	201	4,700,109
九 月(Sep.)	236	4,900,049	8	18,876	228	4,881,173
十 月(Oct.)	237	5,108,426	6	41,713	231	5,066,713
十一月(Nov.)	228	4,769,321	5	16,889	223	4,752,432
十二月(Dec.)	238	5,138,045	6	24,250	232	5,113,795

資料來源：麥寮工業區專用港管理股份有限公司。

**3rd Statistics Tables**  
**一、Harbor Management**

Table 1. Tonnage of Imports and Exports carried by Incoming and Outgoing Vessels

Unit: V., Ton					
		出 港			
總 計		國 內		國 外	
Total		Domestic		Foreign	
艘 次	總 噸 位	艘 次	總 噸 位	艘 次	總 噸 位
V.	G. T.	V.	G. T.	V.	G. T.
1,374	21,963,166	1,035	16,364,343	339	5,598,823
1,758	29,480,038	1,576	26,416,968	182	3,063,070
2,210	36,397,967	569	6,905,358	1,641	29,492,609
2,469	43,162,045	903	11,998,188	1,566	31,163,857
2,549	46,033,186	488	6,159,527	2,061	39,873,659
2,480	48,094,049	234	2,318,874	2,246	45,775,175
3,176	55,968,701	206	2,707,465	2,970	53,261,236
3,025	55,161,194	103	1,647,650	2,922	53,513,544
2,937	57,542,817	122	1,028,836	2,815	56,513,981
2,875	57,165,600	136	1,351,187	2,739	55,814,413
2,483	51,040,986	115	1,242,957	2,368	49,798,029
2,440	51,873,091	125	1,097,510	2,315	50,775,581
2,893	59,522,852	108	846,682	2,785	58,676,170
2,919	59,222,587	115	901,866	2,804	58,320,721
2,784	58,887,018	105	755,438	2,679	58,131,580
247	4,599,910	10	61,998	237	4,537,912
231	4,794,595	6	51,835	225	4,742,760
238	4,667,108	10	50,769	228	4,616,339
234	4,779,329	10	111,473	224	4,667,856
251	5,241,946	11	58,819	240	5,183,127
224	5,812,108	12	67,612	212	5,744,496
210	4,365,034	8	61,940	202	4,303,094
213	4,775,149	7	59,333	206	4,715,816
230	4,928,533	12	58,598	218	4,869,935
245	5,307,855	5	41,514	240	5,266,341
221	4,698,957	5	55,208	216	4,643,749
240	4,916,494	9	76,339	231	4,840,155

## 附表二 進 港 輪 船 國 籍

總噸位單位：噸

年 (月) 別 Year and Month	總 計 Total		巴 拿 馬 Panama		中 華 民 國 R.O.C		香 港 Hong Kong	
	艘次 No. of Vessels	總噸位 G. T.	艘次 No. of Vessels	總噸位 G. T.	艘次 No. of Vessels	總噸位 G. T.	艘次 No. of Vessels	總噸位 G. T.
	2001	1,371	21,920,703	555	9,399,523	109	1,040,744	106
2002	1,764	29,501,874	640	11,731,225	162	1,841,138	50	1,314,824
2003	2,208	36,644,322	763	12,058,096	298	2,687,272	117	1,703,546
2004	2,476	42,992,935	702	9,784,951	463	2,745,771	154	1,768,672
2005	2,551	45,970,534	703	10,159,490	414	2,727,265	212	3,070,868
2006	2,480	48,335,727	722	11,870,852	223	2,169,971	200	3,079,916
2007	3,172	56,044,562	1,001	15,276,041	160	1,845,671	201	5,313,733
2008	3,025	54,825,457	935	15,104,336	97	1,102,133	243	7,237,228
2009	2,943	57,535,569	754	12,941,788	109	967,852	376	9,006,375
2010	2,869	57,105,381	642	11,587,768	148	1,430,540	579	9,624,392
2011	2,491	51,112,185	521	9,279,356	133	1,281,149	446	6,307,484
2012	2,437	52,143,234	374	6,993,865	134	1,142,073	445	6,154,151
2013	2,891	59,397,052	408	9,754,822	167	1,536,448	518	6,797,245
2014	2,920	59,187,771	359	8,046,319	235	2,102,167	491	6,967,542
2015	2,783	59,173,618	301	7,008,656	260	2,655,412	464	7,400,281
一 月(Jan.)	240	4,505,373	26	584,633	21	213,991	41	400,712
二 月(Feb.)	230	4,813,061	33	758,619	16	182,799	29	511,201
三 月(Mar.)	244	4,946,315	22	471,933	23	249,219	46	933,237
四 月(Apr.)	236	4,807,218	24	575,076	24	244,309	40	533,689
五 月(May)	246	5,249,841	32	539,747	23	234,567	41	772,864
六 月(June)	221	5,435,005	29	857,929	27	252,991	36	507,336
七 月(July)	220	4,755,096	27	439,864	22	193,769	42	579,686
八 月(Aug.)	207	4,745,868	26	705,797	19	220,715	32	501,280
九 月(Sep.)	236	4,900,049	24	427,234	24	218,555	36	889,111
十 月(Oct.)	237	5,108,426	20	516,702	18	176,871	47	850,356
十一 月(Nov.)	228	4,769,321	18	602,814	23	272,336	36	410,857
十二 月(Dec.)	238	5,138,045	20	528,308	20	195,290	38	509,952

資料來源：麥寮工業區專用港管理股份有限公司

**Table 2. Number of Incoming Vessels by Registered Nationality**

Unit : Vessel:Ton

新加坡 Singapore		南 韓 Rep. Of Korea		賴 比 瑞 亞 Liberia		其 他 Others	
艘次	總噸位	艘次	總噸位	艘次	總噸位	艘次	總噸位
No. of Vessels	G. T.	No. of Vessels	G. T.	No. of Vessels	G. T.	No. of Vessels	G. T.
80	1,364,884	155	540,676	113	2,153,091	253	6,301,355
132	2,156,932	258	805,547	121	2,207,414	401	9,444,794
127	2,916,450	252	958,336	118	3,255,363	533	13,065,259
192	4,529,051	185	871,648	229	9,538,582	551	13,754,260
321	7,109,280	246	1,176,695	221	10,340,691	434	11,386,245
250	4,477,255	280	1,416,734	329	12,625,913	476	12,695,086
314	4,739,115	509	2,217,131	359	10,699,151	628	15,953,720
290	5,223,831	473	2,380,343	292	8,553,342	695	15,224,244
272	5,275,676	333	1,340,747	294	10,798,873	805	17,204,258
253	5,319,623	292	1,862,746	222	10,631,574	733	16,648,738
217	5,113,297	196	1,251,014	228	11,831,554	750	16,048,331
197	3,820,661	136	757,618	282	16,720,978	869	16,553,888
229	5,032,853	166	1,064,584	244	14,832,412	1,159	20,378,688
188	4,187,219	166	905,344	258	16,551,795	1,223	20,427,385
166	4,362,166	158	944,016	233	15,615,746	1,201	21,187,341
13	228,197	11	49,679	21	1,429,442	107	1,598,719
17	533,734	8	32,917	17	1,163,514	110	1,630,277
11	332,713	13	57,772	20	1,184,992	109	1,716,449
11	265,435	15	74,147	23	1,633,278	99	1,481,284
15	365,585	16	230,778	21	1,206,248	98	1,900,052
15	595,262	14	64,635	14	1,065,133	86	2,091,719
17	473,252	11	45,554	18	1,357,840	83	1,665,131
12	239,541	15	92,833	19	1,338,511	84	1,647,191
11	318,785	15	75,262	22	1,353,231	104	1,617,871
14	216,857	12	93,786	21	1,292,628	105	1,961,226
14	363,001	10	41,853	21	1,513,847	106	1,564,613
16	429,804	18	84,800	16	1,077,082	110	2,312,809

### 附表三 進 港 輪 船 種 類

單位：艘次

年 (月) 別	總計	油輪	液化輪	貨櫃輪	化學輪
Year and Month	Total	Tankers	Liquid Chemical Tankers	Containers	Chemical Tankers
2001	1,371	298	12	135	702
2002	1,764	490	4	213	818
2003	2,208	1,054	506	223	208
2004	2,476	1,358	597	217	35
2005	2,551	1,433	602	193	18
2006	2,480	1,501	399	246	14
2007	3,172	1,857	683	222	53
2008	3,025	1,348	869	183	80
2009	2,943	1,003	393	238	631
2010	2,869	941	375	253	795
2011	2,491	797	290	197	788
2012	2,437	795	248	113	892
2013	2,891	942	295	217	885
2014	2,920	970	427	50	841
2015	2,783	867	409	-	575
一月(Jan.)	240	75	39	-	65
二月(Feb.)	230	67	40	-	70
三月(Mar.)	244	82	36	-	56
四月(Apr.)	236	78	25	-	61
五月(May)	246	78	35	-	62
六月(June)	221	75	20	-	46
七月(July)	220	63	20	-	44
八月(Aug.)	207	67	28	-	33
九月(Sep.)	236	72	35	-	37
十月(Oct.)	237	74	41	-	35
十一月(Nov.)	228	67	45	-	38
十二月(Dec.)	238	69	45	-	28

資料來源：麥寮工業區專用港管理股份有限公司

**Table 3. Number of Incoming Vessels by Kind**

Unit : Vessel			
一般貨輪	散裝輪	煤炭輪	其他
Ordinary Cargoes	Cargos in Bulk	COAL	Others
55	50	102	17
47	55	69	68
99	47	29	42
97	55	58	59
119	80	64	42
134	99	47	40
134	143	38	42
121	163	26	235
448	166	8	56
283	161	3	58
219	145	8	47
179	135	9	66
158	149	11	234
116	154	13	349
129	156	14	633
10	13	2	36
7	11	1	34
14	14	1	41
20	10	2	40
12	10	-	49
9	15	3	53
13	16	2	62
7	17	-	55
7	16	1	68
10	13	1	63
8	11	1	58
12	10		74

## 附表四 進 港 輪 船 航 次

單位：航次

年 (月) 別 Year and Month	國內							
	總計	小計	Domestic					其他
			高雄	台中	台北	基隆		
<u>Total</u>	<u>Sub Total</u>	<u>Kaohsiung</u>	<u>Taichung</u>	<u>Taipei</u>	<u>Keelung</u>	<u>Others</u>		
2001	1,371	119	29	15	21	41	13	
2002	1,764	201	45	34	64	17	41	
2003	2,208	317	64	11	125	20	97	
2004	2,476	473	106	18	75	26	248	
2005	2,551	432	64	6	61	19	282	
2006	2,480	244	42	5	81	18	98	
2007	3,172	198	59	4	78	12	45	
2008	3,025	99	36	1	34	8	20	
2009	2,943	109	48	2	2	6	51	
2010	2,869	138	65	4	7	28	34	
2011	2,491	122	50	3	9	9	51	
2012	2,437	119	55	2	4	5	53	
2013	2,891	120	57	5	5	1	52	
2014	2,920	112	40	10	4	-	58	
2015	2,783	89	55	4	3	1	26	
一月(Jan.)	240	6	5	-	-	-	1	
二月(Feb.)	230	5	2	-	-	-	3	
三月(Mar.)	244	8	6	1	-	-	1	
四月(Apr.)	236	12	5	-	1	1	5	
五月(May)	246	7	6	-	-	-	1	
六月(June)	221	12	4	2	2	-	4	
七月(July)	220	8	6	-	-	-	2	
八月(Aug.)	207	6	4	-	-	-	2	
九月(Sep.)	236	8	6	-	-	-	2	
十月(Oct.)	237	6	4	-	-	-	2	
十一月(Nov.)	228	5	4	1	-	-	-	
十二月(Dec.)	238	6	3	-	-	-	3	

資料來源：麥寮工業區專用港管理股份有限公司



Table 4. Number of Incoming Vessels by Line of Navigation

Unit : Voyage Init : Voyage

小計	國 外								
	香港	日本	南韓	菲律賓	澳洲	沙烏地阿 拉伯	越南	中國	其他
Sub Total	Hong kong	Japain	Korea	Philippine	Australia	Saudiarabi a	Vietnam	China	Others
1,252	179	655	229	26	27	30	7		99
1,563	400	551	304	24	31	31	20		202
1,891	738	281	372	86	46	52	25	5	286
2,003	669	268	426	140	88	86	20	15	291
2,119	583	371	470	76	83	87	45	61	343
2,236	589	399	445	87	93	120	57	60	386
2,974	856	551	688	117	111	128	77	67	379
2,926	951	482	604	111	114	180	94	57	333
2,834	723	279	451	115	123	128	82	580	353
2,731	591	140	371	119	122	152	50	866	320
2,369	459	102	277	130	97	108	47	840	309
2,318	305	59	245	128	92	107	53	1,078	251
2,771	355	60	242	201	102	126	58	1,332	295
2,808	188	96	252	210	89	105	55	1,497	316
2,694	94	92	268	184	95	87	90	1,414	370
234	11	6	24	15	9	6	6	137	20
225	7	4	17	15	8	8	7	134	25
236	12	9	13	7	6	11	13	144	21
224	10	4	18	9	7	9	5	129	33
239	6	11	26	18	8	8	8	126	28
209	11	6	20	14	9	15	4	98	32
212	9	7	23	16	12	5	7	101	32
201	3	8	24	16	8	6	7	99	30
228	6	7	25	19	9	5	7	116	34
231	7	13	24	20	7	4	8	115	33
223	6	11	23	16	7	6	11	110	33
232	6	6	31	19	5	4	7	105	49

## 附表五 出 港 輪 船 航 次

單位：航次

年 (月) 別 Year and Month	國內						
	總計 Total	小計 Sub Total	高雄 Kaohsiung	台北 Taipei	台中 Taichung	基隆 Keelung	其他 Others
2001	1,374	1,035	3	3	11	21	997
2002	1,758	1,576	8	11	33	6	1,518
2003	2,210	569	79	96	4	1	389
2004	2,469	903	111	67	6	5	714
2005	2,549	488	69	67	5	2	345
2006	2,480	234	98	39	7	-	90
2007	3,176	206	91	67	2	5	41
2008	3,025	103	84	2	2	1	14
2009	2,937	122	79	3	3	8	29
2010	2,875	136	72	1	2	26	35
2011	2,483	115	60	-	2	1	52
2012	2,440	125	74	-	2	-	49
2013	2,893	108	67	2	2	-	37
2014	2,919	115	55	4	9	2	45
2015	2,784	105	79	1	2	1	22
一月(Jan.)	247	10	8	-	-	-	2
二月(Feb.)	231	6	4	-	-	-	2
三月(Mar.)	238	10	8	-	-	-	2
四月(Apr.)	234	10	8	-	-	-	2
五月(May)	251	11	7	-	-	1	3
六月(June)	224	12	11	-	-	-	1
七月(July)	210	8	6	-	-	-	2
八月(Aug.)	213	7	5	-	1	-	1
九月(Sep.)	230	12	9	-	-	-	3
十月(Oct.)	245	5	4	-	-	-	1
十一月(Nov.)	221	5	3	-	-	-	2
十二月(Dec.)	240	9	6	1	1	-	1

資料來源：麥寮工業區專用港管理股份有限公司

**Table 5. Number of Outgoing Vessels by Line of Navigation**

Unit : Voyage

小計	國					外					其他
	日本	香港	南韓	新加坡	澳洲	菲律賓	越南	中國	沙烏地阿拉伯		
Sub Total	Japain	Hong kong	Korea	Singapore	Australia	Phillippine	Vietnam	China	Saudi arabia	Others	
339	186	52	59	16	4	2	2	-	2	16	
182	16	89	31	15	-	6	5	-	7	13	
1,641	108	726	296	65	49	101	26	-	63	207	
1,566	226	509	279	63	74	121	25	8	80	181	
2,061	318	693	338	160	81	97	53	40	67	214	
2,246	306	801	364	193	78	87	74	41	81	221	
2,970	430	1,067	546	219	83	114	76	81	102	252	
2,922	398	1,146	401	247	79	117	75	129	148	182	
2,815	265	769	333	251	95	155	90	496	121	240	
2,739	207	487	320	280	115	125	72	745	137	251	
2,368	158	322	230	335	96	157	75	677	96	222	
2,315	108	192	168	337	106	156	110	803	106	229	
2,785	59	274	187	400	106	222	111	1,066	112	248	
2,804	61	120	199	430	107	227	117	1,198	93	252	
2,679	69	46	211	367	116	218	124	1,145	78	305	
237	7	6	18	31	12	22	8	107	7	19	
225	3	9	17	30	10	18	14	100	10	14	
228	4	6	16	36	7	14	15	108	6	16	
224	3	5	21	33	6	16	7	98	10	25	
240	8	4	18	39	5	23	11	98	7	27	
212	6	5	15	30	12	22	9	79	9	25	
202	4	3	20	33	14	12	6	79	4	27	
206	7	1	15	32	12	16	11	84	7	21	
218	3	-	16	27	11	21	12	94	5	29	
240	7	3	16	36	8	22	12	106	4	26	
216	7	2	14	19	10	17	11	97	6	33	
231	10	2	25	21	9	15	8	95	3	43	

附表六 進港輪船噸級與在港停泊時間

停泊時間 Mooring's Time	單位：艘次；噸				
	合計Total 艘次 No. of Vessels	輪 船 Classification of			
		未滿1000噸 Under1,000G.T.	1,000-4,999噸 1,000-4,999G.T.	5,000-9,999噸 5,000-9,999G.T.	10,000-19,999噸 10,000-19,999G.T.
24小時以內 Under 24hours	1,048	29	671	199	50
25-48小時 25-48hours	1,281	6	329	361	107
49-72小時 49-72hours	217	4	20	54	33
73-96小時 73-96hours	90		2	6	32
97-120小時 97-120hours	65		1	2	31
121-144小時 121-144hours	33			2	13
145-168小時 145-168hours	15				2
169-192小時 169-192hours	11				
193小時以上 over193hours	24			1	1
年(月)別 Year and Month					
2001	1,371	69	628	196	174
2002	1,764	129	677	318	288
2003	2,208	243	870	284	352
2004	2,476	298	913	267	404
2005	2,551	238	939	364	393
2006	2,480	139	881	328	408
2007	3,172	82	1,368	576	334
2008	3,025	92	1,285	528	297
2009	2,943	72	1,079	619	331
2010	2,869	79	883	740	353
2011	2,491	66	718	628	361
2012	2,437	68	743	566	334
2013	2,891	61	877	751	370
2014	2,920	62	1,056	670	335
2015	2,783	38	1,022	624	267
一月(Jan.)	240	2	91	59	22
二月(Feb.)	230	1	89	48	29
三月(Mar.)	244	2	93	56	26
四月(Apr.)	236	5	87	52	26
五月(May)	246	5	90	52	27
六月(June)	221	8	71	45	23
七月(July)	220	3	72	57	20
八月(Aug.)	207	2	71	48	19
九月(Sep.)	236	5	82	62	20
十月(Oct.)	237	1	92	55	16
十一月(Nov.)	228	2	90	43	21
十二月(Dec.)	238	2	94	47	18

資料來源：麥寮工業區專用港管理股份有限公司

**Table 6. Number of Incoming Vessels by Gross Tonnage And Time of Vessels Mooring in Port**

Unit : Vessels;Ton

噸 位 分 類				平均停泊時間(天) Average Mooring's Time(Day)
Vessels' Gross Tonnage				
20,000-39,999噸	40,000-59,999噸	60,000-99,999噸	滿100,000噸以上	
20,000-39,999G.T.	40,000-59,999G.T.	60,000-99,999G.T.	Over100,000G.T.	
64	18	17		0.76
269	94	43	72	1.41
40	31	19	16	2.37
3	22	23	2	3.41
1	5	24	1	4.46
1	3	13	1	5.56
2		11		6.41
		9	2	7.56
	1	21		10.13
159	75	47	23	1.67
170	63	70	49	1.36
237	71	86	65	1.21
341	87	91	75	1.24
361	80	88	88	1.30
463	94	82	85	1.25
463	139	115	95	1.27
450	183	100	90	1.28
456	186	102	98	1.31
413	186	129	86	1.33
364	161	120	73	1.54
360	142	137	87	1.48
411	163	170	88	1.42
343	180	185	89	1.46
385	172	179	96	1.50
33	14	14	5	1.48
31	9	14	9	1.49
29	14	17	7	1.49
25	17	18	6	1.48
35	12	15	10	1.50
25	21	18	10	1.61
30	15	17	6	1.66
30	13	16	8	1.70
28	16	15	8	1.51
37	16	11	9	1.59
36	16	12	8	1.62
46	9	12	10	1.48

附表七 進出港貨物國輪外輪承運量

單位：公噸

年 (月) 別	總 計			
	國 內		國 外	
	Domestic		Foreign	
	國輪	外輪	國輪	外輪
Year and Month	Domestic V.	Foreign V.	Domestic V.	Foreign V.
2001	697,005	69,885	102,428	25,450,728
2002	1,204,083	93,651	307,286	32,657,186
2003	2,406,163	3,626	665,865	40,111,760
2004	2,692,184	97,637	402,932	49,695,779
2005	2,681,181	2,695	198,222	55,259,819
2006	2,436,106	1,771	52,560	56,764,224
2007	1,880,616	65,620	7,771	67,939,596
2008	602,519	-	231,435	68,346,541
2009	479,961	46,009	167,193	69,698,054
2010	743,974	61,375	115,897	66,982,935
2011	618,654	151,808	87,321	59,487,365
2012	500,327	163,843	255,040	63,788,577
2013	243,416	328,690	1,108,102	68,746,693
2014	413,010	377,475	1,534,523	69,533,865
2015	617,735	199,368	2,068,879	70,420,807
一月(Jan.)	68,540	-	195,030	5,291,791
二月(Feb.)	56,974	23,988	146,846	5,770,667
三月(Mar.)	45,484	3,496	177,086	5,696,569
四月(Apr.)	72,889	3,499	167,979	5,612,967
五月(May)	58,495	3,498	187,311	6,153,805
六月(June)	52,818	-	182,755	6,685,138
七月(July)	61,132	-	160,843	5,706,871
八月(Aug.)	41,201	52,476	173,379	5,830,891
九月(Sep.)	39,544	29,827	145,711	5,758,985
十月(Oct.)	33,640	53,729	170,856	6,105,385
十一月(Nov.)	52,169	-	206,109	5,486,325
十二月(Dec.)	34,849	28,855	154,974	6,321,413

資料來源：葵寮工業區專用港管理股份有限公司

**Table 7. Tonnage of Imports & Exports Carried by Domestic and Foreign Vessels**

Unit: M.T.

進		港		出		港	
Import				Export			
國內		國外		國內		國外	
Domestic		Foreign		Domestic		Foreign	
國輪	外輪	國輪	外輪	國輪	外輪	國輪	外輪
Domestic V.	Foreign V.	Domestic V.	Foreign V.	Domestic V.	Foreign V.	Domestic V.	Foreign V.
96,168	-	6,366	22,229,919	600,837	69,885	96,062	3,220,809
45,629	-	65,847	26,302,254	1,158,454	93,651	241,439	6,354,932
50,564	-	430,827	31,583,522	2,355,599	3,626	235,038	8,528,238
112,594	-	184,888	39,008,826	2,579,590	97,637	218,044	10,686,953
131,616	-	69,535	41,164,939	2,549,565	2,695	128,687	14,094,880
66,156	-	-	42,081,790	2,369,950	1,771	52,560	14,682,434
42,350	-	-	49,454,178	1,838,266	65,620	7,771	18,485,418
22,800	-	231,435	47,148,952	579,719	-	-	21,197,589
17,341	-	5,783	48,268,482	462,620	46,009	161,410	21,429,572
11,302	-	4,853	48,075,276	732,672	61,375	111,044	18,907,659
35,872	-	18,087	42,808,579	582,782	151,808	69,234	16,678,786
34,536	-	2,002	45,199,323	465,791	163,843	253,038	18,589,254
11,500	-	3,108	48,909,690	231,916	328,690	1,104,994	19,837,003
63,625	8,331	-	49,650,688	349,385	369,144	1,534,523	19,883,177
135,205	23,281	-	50,413,909	482,530	176,087	2,068,879	20,006,898
16,473	-	-	3,526,577	52,067	-	195,030	1,765,214
10,973	-	-	4,099,572	46,001	23,988	146,846	1,671,095
16,460	-	-	4,169,879	29,024	3,496	177,086	1,526,690
19,276	-	-	4,073,109	53,613	3,499	167,979	1,539,858
10,991	-	-	4,188,497	47,504	3,498	187,311	1,965,308
5,265	-	-	4,874,498	47,553	-	182,755	1,810,640
16,340	-	-	4,396,604	44,792	-	160,843	1,310,267
16,053	-	-	4,350,476	25,148	52,476	173,379	1,480,415
7,744	-	-	4,189,428	31,800	29,827	145,711	1,569,557
10,121	23,281	-	4,043,832	23,519	30,448	170,856	2,061,553
5,509	-	-	3,972,433	46,660	-	206,109	1,513,892
-	-	-	4,529,004	34,849	28,855	154,974	1,792,409

附表八 進 港 貨 物 （地區別）

單位：公噸

年 (月) 別 Year and Month	國		內			
	總 計 Total	小 計 Sub Total	花 蓮 Hualien	蘇 澳 Suauo	高 雄 Kaohsiung	其 他 Others
2001						
2002						
2003						
2004	39,039,900	112,594	112,405	-	189	-
2005	38,666,233	131,616	120,005	11,501	110	-
2006	42,147,951	66,156	65,906	-	250	-
2007	49,496,526	42,350	34,301	-	8,049	-
2008	47,403,187	22,800	22,800	-	-	-
2009	48,291,607	17,341	11,301	-	3,131	2,909
2010	48,091,430	11,302	11,302	-	-	-
2011	42,862,537	35,872	23,003	-	-	12,869
2012	45,235,863	34,536	34,536	-	-	-
2013	48,924,299	11,500	11,500	-	-	-
2014	49,722,645	71,956	11,501	-	54,707	5,748
2015	50,572,391	158,486	-	-	135,205	23,281
一 月(Jan.)	3,543,050	16,473	-	-	16,473	-
二 月(Feb.)	4,110,544	10,973	-	-	10,973	-
三 月(Mar.)	4,186,340	16,460	-	-	16,460	-
四 月(Apr.)	4,092,386	19,276	-	-	19,276	-
五 月(May)	4,199,489	10,991	-	-	10,991	-
六 月(June)	4,879,763	5,265	-	-	5,265	-
七 月(July)	4,412,944	16,340	-	-	16,340	-
八 月(Aug.)	4,366,529	16,053	-	-	16,053	-
九 月(Sep.)	4,197,171	7,744	-	-	7,744	-
十 月(Oct.)	4,077,232	33,402	-	-	10,121	23,281
十一月 (Nov. )	3,977,940	5,509	-	-	5,509	-
十二月 (Dec. )	4,529,003	-	-	-	-	-

資料來源：麥寮工業區專用港管理股份有限公司



**Table 8. Tonnage of Imports (by Region)**

Unit : M.T.

小計	國 外									
	沙烏地阿拉伯	澳洲	科威特	中國大陸	伊 朗	阿 曼	阿拉伯聯合大公國	印尼	伊拉克	其 他
Sub Total	Saudi arabia	Australia	Kuwait	China mainland	Iran	Oman	UAE	Indonesia	Iraq	Others
38,927,306	9,937,993	6,518,872	5,728,593	5,835,742	2,488,635	1,110,456	989,078	967,087	-	5,350,850
38,534,617	9,397,847	8,053,348	5,926,999	4,617,709	2,802,544	1,523,488	1,215,440	980,115	-	4,017,127
42,081,795	10,359,513	7,743,850	5,972,172	3,303,790	2,237,423	1,105,770	1,678,004	3,193,661	1,742,009	4,745,603
49,454,176	10,636,547	10,396,485	6,551,422	3,864,632	3,229,756	1,395,340	1,634,974	2,938,904	3,167,892	5,638,224
47,380,387	11,330,939	10,831,613	6,901,099	2,823,131	3,059,499	1,361,613	2,107,495	2,128,152	2,799,784	4,037,062
48,274,266	11,299,622	9,224,412	6,537,528	995,885	839,101	2,443,997	1,741,698	2,786,044	4,414,702	7,991,277
48,080,128	10,512,341	8,363,512	6,437,002	680,054	944,870	1,678,995	1,938,966	1,736,894	2,913,919	12,873,575
42,826,665	8,576,460	6,920,413	6,310,330	418,094	899,983	496,051	1,902,473	1,849,274	559,750	14,893,837
45,201,327	8,545,109	5,913,064	7,473,517	387,929	628,079	2,257,558	1,895,016	2,401,952	3,256,354	12,442,749
48,912,799	9,532,587	5,811,218	7,953,234	236,715	364,121	2,569,598	1,913,818	2,721,871	3,239,679	14,569,958
49,650,689	10,063,287	7,508,924	6,511,016	149,460	264,464	2,320,410	2,085,334	3,723,313	4,692,100	12,332,381
50,413,905	10,004,770	8,668,361	7,811,410	94,240	350,792	2,767,536	2,509,008	4,833,800	3,518,323	9,855,665
3,526,577	662,356	968,382	433,308	2,636	21,000	26,313	115,118	337,870	265,801	693,793
4,099,571	911,038	771,350	751,367	4,661	153,773	214,609	122,253	353,361	-	817,159
4,169,880	534,790	548,007	758,934	28,957	-	276,368	215,873	422,051	545,167	839,733
4,073,110	779,239	708,459	752,370	4,080	-	8,250	192,558	418,103	269,166	940,885
4,188,498	1,156,234	511,297	545,238	1,950	-	291,928	159,602	422,866	272,099	827,284
4,874,498	996,556	999,855	441,961	2,154	-	414,850	234,480	401,309	542,831	840,502
4,396,604	754,717	1,126,385	617,274	7,327	25,276	269,466	247,842	541,053	271,808	535,456
4,350,476	830,891	844,345	776,355	10,394	-	284,992	79,478	564,165		959,856
4,189,427	885,978	854,639	714,539	-	-	144,667	188,969	494,721	267,543	638,371
4,043,830	721,143	633,327	545,075	2,096	134,993	280,109	367,388	161,528	274,505	923,666
3,972,431	883,166	347,224	716,277	28,541	15,750	31,843	317,524	322,300	269,254	1,040,552
4,529,003	888,662	355,091	758,712	1,444	-	524,141	267,923	394,473	540,149	798,408

附表九 出 港 貨 物 (地區別)

單位：公噸

年(月)別 Year and Month	國 內						
	總 計	Domestic					
	小 計	高 雄	台 北	蘇 澳	金 門	其 他	
	<u>Total</u>	<u>Sub Total</u>	<u>Kaohsiung</u>	<u>Taipei</u>	<u>Suaao</u>	<u>Kin Men</u>	<u>Others</u>
2001							
2002							
2003							
2004	12,732,276	2,677,226	1,042,225	865,093	245,620	36,889	487,399
2005	16,238,493	2,544,987	1,745,019	552,503	117,365	44,994	85,106
2006	17,106,717	2,371,720	982,727	950,429	293,658	41,516	103,390
2007	20,397,075	1,903,888	191,066	1,371,077	207,043	11,106	123,596
2008	21,777,308	579,718	135,272	119,925	198,945	-	125,576
2009	22,099,608	508,627	138,788	13,531	178,803	-	177,505
2010	19,812,748	794,046	94,355	27,158	442,835	8,343	221,355
2011	17,482,609	734,589	118,674	16,099	435,112	-	164,704
2012	19,471,922	629,632	108,056	10,470	395,521	-	115,585
2013	21,502,598	560,607	107,961	14,570	239,882	-	198,194
2014	22,136,230	718,528	94,308	208,288	332,775	-	83,157
2015	22,734,392	658,618	129,827	132,267	336,029	-	60,495
一 月(Jan.)	2,012,312	52,067	-	-	46,999	-	5,068
二 月(Feb.)	1,887,929	69,989	3,500	20,488	46,001	-	-
三 月(Mar.)	1,736,296	32,520	3,496	-	24,001	-	5,023
四 月(Apr.)	1,764,948	57,112	24,115	-	32,997	-	-
五 月(May)	2,203,617	51,001	14,003	-	36,998	-	-
六 月(June)	2,040,948	47,553	20,558	-	21,999	-	4,996
七月(July)	1,515,902	44,792	5,290	-	39,502	-	-
八月(Aug.)	1,731,418	77,625	5,002	52,476	9,892	-	10,255
九月(Sep.)	1,776,897	61,628	8,471	-	20,998	-	32,159
十月(Oct.)	2,286,377	53,968	14,519	30,448	9,001	-	-
十一月(Nov.)	1,766,660	46,660	15,660	-	31,000	-	-
十二月(Dec.)	2,011,088	63,703	15,213	28,855	16,641	-	2,994

資料來源：麥寮工業區專用港管理股份有限公司

**Table 9. Tonnage of Exports (by Region)**

		Unit : M.T. Unit : M.T.							
		國				外			
		Foreign							
小 計	新加坡	中國大陸	菲律賓	美國	澳洲	印尼	香港	越南	其他
Sub Total	Singapore	China mainland	Philippine	United States	Australia	Indonesia	Hong kong	Vietnam	Others
10,055,050	1,607,450	2,321,149	1,545,807	968,526	586,238	60,360	1,166,288	-	1,799,232
13,693,506	2,835,727	2,660,494	1,698,645	1,160,177	831,573	672,875	586,622	-	3,247,393
14,734,997	3,046,986	2,950,357	1,082,112	849,629	1,305,700	642,518	663,592	1,556,389	2,637,714
18,493,187	3,500,386	4,493,062	1,594,111	1,034,871	1,780,948	571,537	677,434	1,911,893	2,928,945
21,197,590	4,033,206	6,639,235	1,173,748	729,939	1,482,649	809,143	348,332	1,979,365	4,001,973
21,590,981	2,586,354	5,645,336	1,884,106	985,313	1,133,237	1,416,779	702,650	1,968,193	5,269,013
19,018,702	2,911,250	5,420,436	1,850,026	677,894	972,573	1,655,019	545,449	1,179,653	3,806,402
16,748,020	2,792,847	4,516,875	1,833,483	451,362	996,955	818,625	882,038	1,250,721	3,205,114
18,842,290	4,424,542	4,677,789	3,139,983	462,303	889,843	691,498	805,829	1,305,396	2,445,107
20,941,991	2,766,824	6,252,613	3,807,887	179,522	1,262,184	983,273	643,925	1,281,009	3,764,754
21,417,702	3,352,735	6,234,205	4,202,815	472,689	1,235,974	343,656	755,310	1,129,670	3,690,648
22,075,774	3,585,546	6,308,794	4,687,173	499,006	1,615,268	267,848	1,057,638	1,361,284	2,693,217
1,960,245	174,586	595,783	402,988	45,200	175,606	32,724	156,441	167,798	209,119
1,817,940	315,361	526,185	341,573	2,500	140,971	30,695	91,340	245,720	123,595
1,703,776	195,177	590,269	374,251	57,809	57,000	22,522	130,779	208,498	67,471
1,707,836	424,926	539,643	241,608	36,326	96,128	8,895	167,037	28,650	164,623
2,152,616	483,487	569,866	358,692	23,450	131,004	1,508	147,215	127,215	310,179
1,993,395	354,915	468,281	336,827	74,926	159,444	78,748	126,738	88,607	304,909
1,471,110	223,734	461,751	191,220	19,667	157,577	5,806	72,427	36,239	302,689
1,653,793	266,572	491,571	396,687	57,760	89,388	6,018		99,524	246,273
1,715,269	160,370	487,799	507,362	47,250	128,396	-	40,491	64,500	279,101
2,232,409	388,580	570,690	490,949	17,275	283,889	9,577	81,520	134,510	255,419
1,720,000	221,973	501,572	576,632	25,687	49,000	45,342	3,718	133,633	162,443
1,947,385	375,865	505,384	468,384	91,156	146,865	26,013	39,932	26,390	267,396

## 附表十 進 港 貨 物 分 類 (按 月)

單位：公噸

年 (月) 別 Year and Month	礦 產 品 Minerals						
	總 計	煤	鐵 礦 砂	土、石、砂 礫	硫 磺	粗 鹽	其 他
	Total	Coal & Coke	Iron Ore	Clay, Stone, Sand & Gravel	Sulphur	Salt	Others
2001	21,862,645	9,550,636	-	-	-	809,479	-
2002	26,112,303	8,312,020	-	-	-	864,124	111,770
2003	30,726,933	9,186,476	-	25,486	-	1,057,068	46,253
2004	39,039,900	12,172,091	-	162,380	-	1,403,019	139,234
2005	38,666,233	11,994,071	-	164,738	-	1,237,660	156,379
2006	42,147,947	12,490,414	-	447,450	-	1,743,925	100,483
2007	49,496,527	15,240,616	-	578,233	-	1,699,685	72,198
2008	47,403,188	13,185,738	-	437,432	-	2,226,171	27,940
2009	48,291,606	13,340,191	-	352,208	-	1,632,852	21,692
2010	48,091,428	13,740,729	-	329,128	-	1,821,464	27,095
2011	42,862,538	12,922,261	-	260,799	-	1,722,395	17,543
2012	45,235,860	12,978,908	-	300,876	-	1,794,245	23,767
2013	48,924,296	13,991,618	-	142,666	-	1,794,218	27,496
2014	49,722,644	13,567,679	-	99,924	-	1,684,101	27,911
2015	50,572,394	13,558,793	-	52,552	-	1,731,127	28,878
一 月(Jan.)	3,543,050	1,304,752	-	-	-	157,458	4,662
二 月(Feb.)	4,110,544	992,956	-	-	-	77,000	1,655
三 月(Mar.)	4,186,339	970,621	-	26,052	-	234,256	1,083
四 月(Apr.)	4,092,386	1,116,666	-	-	-	139,185	4,080
五 月(May)	4,199,488	1,006,597	-	-	-	93,171	1,950
六 月(June)	4,879,763	1,252,134	-	-	-	211,803	2,154
七 月(July)	4,412,944	1,585,660	-	-	-	-	2,207
八 月(Aug.)	4,366,529	1,266,626	-	-	-	209,551	2,196
九 月(Sep.)	4,197,172	1,334,159	-	-	-	157,350	-
十 月(Oct.)	4,077,233	958,926	-	-	-	297,533	3,801
十 一 月(Nov.)	3,977,942	1,101,627	-	26,500	-	-	2,041
十 二 月(Dec.)	4,529,004	668,069	-	-	-	153,820	3,049

資料來源：麥寮工業區專用港管理股份有限公司

Table 10. Classification of Imports (by Month)

Unit : M.T.

非金屬礦物製品 Non-metallic Mineral Products			
汽、柴、燃料油	原油	輕油	其他
Gasoline, Diesel, Fuel Oil	Grude Oil	Naphtha	Others
-	-	-	10,981,472
-	-	-	15,819,147
-	15,442,885	3,445,306	80,629
-	19,786,495	3,441,305	560,565
-	20,439,568	2,469,388	535,310
36,629	22,076,578	3,049,811	604,229
-	23,788,323	5,303,729	602,331
-	23,187,786	6,284,727	458,045
2,909	24,318,216	6,485,165	704,600
-	22,299,715	7,639,160	416,349
66,292	19,454,259	6,140,506	710,131
-	21,773,269	6,391,800	367,489
-	23,247,971	7,074,850	843,505
-	24,024,343	7,296,536	1,071,662
-	24,762,167	7,658,804	814,277
-	1,328,925	566,399	71,111
-	2,311,869	584,314	9,900
-	1,989,682	792,477	53,208
-	1,731,511	902,540	35,227
-	2,358,398	545,674	34,956
-	2,541,446	605,852	161,088
-	1,732,245	781,880	107,765
-	2,030,542	624,472	83,437
-	1,977,276	496,538	113,430
-	2,052,313	371,376	91,128
-	1,939,079	742,692	37,238
-	2,768,881	644,590	15,789

附表十 進 港 貨 物 分 類 (按 月) (續 完)

單位：公噸

年 (月) 別 Year and Month	化 學 品 Chemical Products			基 本 金 屬 Basic Metal	
	肥 料 Fertilizer	動 植 物 性 油 脂 Animal & Vegetable Grease	其 他 Others	鋼 鐵 Iron & Steel	廢 鐵 Iron & Steel Scrap
2001	-	-	494,438	-	-
2002	-	-	995,195	-	-
2003	-	-	1,442,304	-	-
2004	-	-	1,232,141	-	-
2005	-	-	1,378,237	-	-
2006	-	-	1,586,764	-	-
2007	-	-	2,142,588	-	-
2008	-	-	1,595,062	-	-
2009	-	-	1,416,932	-	-
2010	-	-	1,804,662	-	-
2011	-	-	1,470,673	-	-
2012	-	-	1,566,478	-	-
2013	-	-	1,789,997	-	-
2014	-	-	1,861,738	-	-
2015	-	-	1,501,093	-	-
一 月 (Jan.)	-	-	93,270	-	-
二 月 (Feb.)	-	-	121,877	-	-
三 月 (Mar.)	-	-	102,500	-	-
四 月 (Apr.)	-	-	143,901	-	-
五 月 (May)	-	-	147,751	-	-
六 月 (June)	-	-	100,021	-	-
七 月 (July)	-	-	186,847	-	-
八 月 (Aug.)	-	-	133,652	-	-
九 月 (Sep.)	-	-	110,675	-	-
十 月 (Oct.)	-	-	94,601	-	-
十 一 月 (Nov.)	-	-	123,256	-	-
十 二 月 (Dec.)	-	-	142,742	-	-

資料來源：葵寮工業區專用港管理股份有限公司

**Table 10. Classification of Imports (by Month)**

Unit : M.T.

基本金屬 Basic Metal		金屬製品 Metal Products			其他什貨
其他	機件	電器機械器材	其他		
Others	Grude Oil	Electrical Machinery, Apparatus	Others		General Merchandise
-	-	-	-		26,620
-	-	-	10,047		-
-	-	-	-		526
-	1,272	-	-		141,398
-	6,965	408	110		283,399
-	11,252	-	58		354
-	614	-	-		68,210
-	-	-	287		-
-	178	-	1,196		15,467
-	1,132	-	431		11,563
-	736	-	418		96,525
-	492	-	-		38,536
-	270	-	-		11,705
-	459	-	-		88,291
-	-	-	-		464,703
-	-	-	-		16,473
-	-	-	-		10,973
-	-	-	-		16,460
-	-	-	-		19,276
-	-	-	-		10,991
-	-	-	-		5,265
-	-	-	-		16,340
-	-	-	-		16,053
-	-	-	-		7,744
-	-	-	-		207,555
-	-	-	-		5,509
-	-	-	-		132,064

附表十一 進 港 貨 物 分 類 (按碼頭)

單位：公噸

年 (月) 別 Year and Month	礦 產 品 Minerals						
	總 計	煤	鐵 礦 砂	土、石、砂 礫	硫 磺	粗 鹽	其 他
	<b>Total</b>	Coal & Coke	Iron Ore	Sand & Gravel	Sulphur	Salt	Others
2001	21,862,645	9,550,636	-	-	-	809,479	-
2002	26,112,303	8,312,020	-	-	-	864,124	111,770
2003	30,726,933	9,186,476	-	25,486	-	1,057,068	46,253
2004	37,615,228	11,669,042	-	130,652	-	1,267,204	104,405
2005	41,992,805	12,321,245	-	197,997	-	1,317,494	120,406
2006	42,147,947	12,490,414	-	447,450	-	1,743,925	100,483
2007	49,496,527	15,227,086	-	578,233	-	1,699,685	72,198
2008	47,403,186	13,185,738	-	437,432	-	2,226,171	27,942
2009	48,291,606	13,340,191	-	352,208	-	1,632,852	21,692
2010	48,091,429	13,740,729	-	329,128	-	1,821,464	27,096
2011	42,862,538	12,922,261	-	260,799	-	1,722,395	17,543
2012	45,235,863	12,978,907	-	300,876	-	1,794,245	23,767
2013	48,924,299	13,991,618	-	142,666	-	1,794,218	27,496
2014	49,722,644	13,567,679	-	99,924	-	1,684,101	27,911
2015	50,572,395	13,558,793	-	52,552	-	1,731,127	28,878
東1碼頭	9,581	-	-	-	-	-	9,581
東2碼頭	2,788,879	1,057,752	-	-	-	1,731,127	-
東3碼頭	5,983,319	5,823,320	-	-	-	-	-
東4碼頭	6,677,721	6,677,721	-	-	-	-	-
東5碼頭	71,849	-	-	52,552	-	-	19,297
東6碼頭	117,733	-	-	-	-	-	-
東7碼頭	1,275,516	-	-	-	-	-	-
東8碼頭	1,965,515	-	-	-	-	-	-
東9N/S碼頭	258,320	-	-	-	-	-	-
東10N/S碼頭	394,386	-	-	-	-	-	-
北1碼頭	328,780	-	-	-	-	-	-
北2碼頭	588,963	-	-	-	-	-	-
北5碼頭	-	-	-	-	-	-	-
北6碼頭	-	-	-	-	-	-	-
北7碼頭	5,987	-	-	-	-	-	-
西1碼頭	593,018	-	-	-	-	-	-
西2碼頭	8,521,707	-	-	-	-	-	-
西3碼頭	20,991,121	-	-	-	-	-	-

資料來源：麥寮工業區專用港管理股份有限公司



**Table 11. Classification of Imports (by Wharf)**

Unit : M.T.

非金屬礦物製品 Non-metallic Mineral Products			
汽、柴、燃料油	原油	輕油	其他
Gasoline, Diesel, Fuel Oil	Grude Oil	Naphtha	Others
-	-	-	10,981,472
-	-	-	15,819,147
-	15,442,885	3,445,306	80,629
-	19,256,748	3,395,226	559,611
-	23,411,864	2,632,987	490,109
36,629	22,076,578	3,049,811	604,229
-	23,647,080	5,227,816	602,331
-	23,187,783	6,284,726	458,045
2,909	24,318,216	6,485,164	704,600
-	22,299,714	7,639,159	416,349
66,291	19,454,260	6,140,507	710,130
-	21,773,270	6,391,802	367,489
-	23,247,973	7,074,852	843,505
-	24,024,343	7,296,537	1,071,662
-	24,762,166	7,658,803	814,278
-	-	-	-
-	-	-	-
-	-	-	-
-	-	-	-
-	-	-	-
-	-	-	-
-	-	1,013,261	195,011
-	443,364	979,757	531,456
-	-	-	57,870
-	-	-	-
-	-	-	-
-	-	-	-
-	-	-	-
-	-	-	-
-	-	-	-
-	-	548,923	29,941
-	5,642,903	2,801,640	-
-	18,675,899	2,315,222	-

附表十一 進 港 貨 物 分 類 (按碼頭) (續完)

單位：公噸

年 (月) 別 Year and Month	化 學 品 Chemical Products			基 本 金 屬 Basic Metal	
	肥 料	動 植 物 性 油 脂	其 他	鋼 鐵	廢 鐵
	Fertilizer	Animal & Vegetable Grease	Others	Iron & Steel	Iron & Steel Scrap
2001	-	-	494,438	-	-
2002	-	-	995,195	-	-
2003	-	-	1,442,304	-	-
2004	-	-	1,106,384	-	-
2005	-	-	1,473,730	-	-
2006	-	-	1,586,764	-	-
2007	-	-	2,142,587	-	-
2008	-	-	1,595,062	-	-
2009	-	-	1,416,933	-	-
2010	-	-	1,804,664	-	-
2011	-	-	1,470,673	-	-
2012	-	-	1,566,479	-	-
2013	-	-	1,789,996	-	-
2014	-	-	1,861,739	-	-
2015	-	-	1,501,093	-	-
東1碼頭	-	-	-	-	-
東2碼頭	-	-	-	-	-
東3碼頭	-	-	-	-	-
東4碼頭	-	-	-	-	-
東5碼頭	-	-	-	-	-
東6碼頭	-	-	103,931	-	-
東7碼頭	-	-	-	-	-
東8碼頭	-	-	-	-	-
東9N/S碼頭	-	-	149,140	-	-
東10N/S碼頭	-	-	334,804	-	-
北1碼頭	-	-	323,294	-	-
北2碼頭	-	-	583,937	-	-
北5碼頭	-	-	-	-	-
北6碼頭	-	-	-	-	-
北7碼頭	-	-	5,987	-	-
西1碼頭	-	-	-	-	-
西2碼頭	-	-	-	-	-
西3碼頭	-	-	-	-	-

資料來源：麥寮工業區專用港管理股份有限公司

**Table 11. Classification of Imports (by Wharf)**

Unit : M.T.

基本金屬 Basic Metal		金屬製品 Metal Products			其他什貨
其他	機件	電器機械器材	其他		
Others	Grude Oil	Electrical Machinery, Apparatus	Others		General Merchandise
-	-	-	-		26,620
-	-	-	10,047		-
-	-	-	-		526
-	-	-	-		125,956
-	-	-	-		26,973
-	11,252	-	58		354
-	614	-	-		298,897
-	-	-	287		-
-	178	-	1,196		15,467
-	1,132	-	431		11,563
-	736	-	418		96,525
-	492	-	-		38,536
-	270	-	-		11,705
-	459	-	-		88,289
-	-	-	-		464,705
-	-	-	-		-
-	-	-	-		-
-	-	-	-		159,999
-	-	-	-		-
-	-	-	-		-
-	-	-	-		13,802
-	-	-	-		67,244
-	-	-	-		10,938
-	-	-	-		51,310
-	-	-	-		59,582
-	-	-	-		5,486
-	-	-	-		5,026
-	-	-	-		-
-	-	-	-		-
-	-	-	-		-
-	-	-	-		14,154
-	-	-	-		77,164
-	-	-	-		-

附表十二 出 港 貨 物 分 類 (按 月)

年 (月) 別 Year and Month	礦 產 品 Minerals			
	總 計	煤	鐵 礦 砂	土、石、砂礫
	<b>Total</b>	<b>Coal &amp; Coke</b>	<b>Iron Ore</b>	<b>Clay, Stone, Sand &amp; Gravel</b>
2001	4,179,533	-	-	-
2002	7,918,726	-	-	50
2003	10,670,493	-	-	-
2004	12,732,277	-	-	-
2005	16,238,492	-	-	-
2006	17,106,715	-	-	-
2007	20,397,076	-	-	-
2008	21,777,306	-	-	-
2009	22,099,608	-	-	-
2010	19,812,747	-	-	-
2011	17,482,614	-	-	-
2012	19,471,923	-	-	-
2013	21,502,603	-	-	-
2014	22,136,229	-	-	-
2015	22,734,392	-	-	-
一 月(Jan.)	2,012,310	-	-	-
二 月(Feb.)	1,887,930	-	-	-
三 月(Mar.)	1,736,296	-	-	-
四 月(Apr.)	1,764,950	-	-	-
五 月(May)	2,203,620	-	-	-
六 月(June)	2,040,947	-	-	-
七 月(July)	1,515,901	-	-	-
八 月(Aug.)	1,731,417	-	-	-
九 月(Sep.)	1,776,896	-	-	-
十 月(Oct.)	2,286,376	-	-	-
十一 月(Nov.)	1,766,662	-	-	-
十二 月(Dec.)	2,011,087	-	-	-

資料來源：麥寮工業區專用港管理股份有限公司

**Table 12. Classification of Imports (by Month)**

單位：公噸					Unit : M.T.
礦 產 品 Minerals			非 金 屬 礦 物 製 品 Non-metalic Mineral Products		
硫 磺	粗 鹽	其 他	汽、柴、燃料油	其他	
Sulphur	Salt	Others	Gasoline, Diesel, Fuel Oil	Others	
-	-	-	1,393,605	647,888	
65,426	-	-	3,987,163	1,267,453	
103,316	-	-	6,785,856	646,945	
188,950	-	-	9,192,127	518,246	
238,759	-	-	11,584,666	713,673	
260,700	-	-	11,773,715	690,876	
295,000	-	-	12,649,199	943,722	
334,460	-	-	12,890,872	1,171,169	
367,100	-	-	13,381,360	1,103,819	
272,305	-	-	10,973,773	1,313,684	
154,150	-	-	9,802,513	1,378,095	
234,700	-	-	11,144,210	1,569,148	
317,850	-	-	11,341,593	1,869,705	
318,250	-	-	10,027,812	1,996,026	
350,500	-	-	10,114,860	2,271,965	
16,500	-	-	849,470	177,957	
49,500	-	-	868,121	118,001	
16,500	-	-	685,191	200,864	
16,500	-	-	740,708	163,405	
33,000	-	-	1,137,776	204,524	
48,500	-	-	928,022	185,405	
16,500	-	-	566,264	173,907	
36,500	-	-	789,441	199,767	
15,000	-	-	840,257	199,631	
48,800	-	-	1,041,968	253,860	
22,000	-	-	767,088	162,351	
31,200	-	-	900,554	232,293	

附表十二 出 港 貨 物 分 類 (按 月) (續 完)

單位：公噸

年 (月) 別 Year and Month	化 學 品 Chemical Products			基 本 金 屬 Basic Metal	
	肥 料	動 植 物 性 油 脂	其 他	鋼 鐵	廢 鐵
	Fertilizer	Animal & Vegetable Grease	Others	Iron & Steel	Iron & Steel Scrap
2001	-	-	2,128,272	-	-
2002	-	-	2,598,634	-	-
2003	-	-	3,128,210	-	-
2004	-	-	2,809,358	-	-
2005	-	-	3,663,692	-	-
2006	-	2,709	4,329,830	-	-
2007	-	3,226	6,201,806	-	-
2008	-	2,089	7,183,434	-	-
2009	-	155	7,097,754	-	-
2010	-	396	7,158,364	-	-
2011	-	92	6,028,802	-	-
2012	-	-	6,353,201	-	-
2013	-	262	7,336,868	-	-
2014	-	35	7,176,637	-	-
2015	-	-	7,148,852	-	-
一 月 (Jan.)	-	-	756,770	-	-
二 月 (Feb.)	-	-	582,001	-	-
三 月 (Mar.)	-	-	685,308	-	-
四 月 (Apr.)	-	-	626,677	-	-
五 月 (May)	-	-	571,912	-	-
六 月 (June)	-	-	560,782	-	-
七 月 (July)	-	-	582,823	-	-
八 月 (Aug.)	-	-	476,662	-	-
九 月 (Sep.)	-	-	507,044	-	-
十 月 (Oct.)	-	-	629,299	-	-
十 一 月 (Nov.)	-	-	602,085	-	-
十 二 月 (Dec.)	-	-	567,489	-	-

資料來源：麥寮工業區專用港管理股份有限公司

**Table 12. Classification of Imports (by Month)**

Unit : M.T.

基本金屬 Basic Metal		金屬製品 Metal Products			其他什貨
其他	機件	電器機械器材	其他		
Others	Grude Oil	Electrical Machinery, Apparatus	Others		General Merchandise
9,768	-	-	-	-	-
-	-	-	-	-	-
-	-	-	-	-	6,166
-	5,132	-	-	-	18,464
-	2,591	-	1,820	-	33,291
-	374	-	-	-	48,511
1,002	493	-	-	-	302,629
-	1,613	-	-	-	193,669
-	2,064	-	-	-	147,356
-	196	-	-	-	94,029
-	-	-	-	-	118,962
-	1,266	-	-	-	169,398
-	4,188	-	-	-	632,137
-	2,384	-	-	-	2,615,085
-	7,271	-	-	-	2,840,944
-	-	-	-	-	211,613
-	-	-	-	-	270,307
-	263	-	-	-	148,170
-	-	-	-	-	217,660
-	-	-	-	-	256,408
-	163	-	-	-	318,075
-	-	-	-	-	176,407
-	-	-	-	-	229,047
-	-	-	-	-	214,964
-	-	-	-	-	312,449
-	2,687	-	-	-	210,451
-	4,158	-	-	-	275,393

附表十三 出 港 貨 物 分 類 (按碼頭)

單位：計費噸

年 (月) 別 Year and Month	礦 產 品 Minerals					非金屬礦物製品 Non-metallic Mineral Products		
	總 計 Total	煤 Coal & Coke	土、石、砂礫 Clay, Stone, Sand & Gravel	硫 磺 Sulphur	粗 鹽 Salt	其他 Others	汽、柴、燃料油 Gasoline, Diesel, Fuel Oil	其他 Others
2001	4,179,533	-	-	-	-	-	1,393,605	647,888
2002	7,918,726	-	50	65,426	-	-	3,987,163	1,267,453
2003	10,670,493	-	-	103,316	-	-	6,785,856	646,945
2004	13,893,900	-	-	172,921	-	-	9,719,518	317,376
2005	16,918,407	-	-	220,731	-	-	12,030,309	504,290
2006	17,106,715	-	-	260,700	-	-	11,773,715	690,876
2007	20,397,078	-	-	295,000	-	-	12,649,200	943,722
2008	21,777,307	-	-	334,460	-	-	12,890,870	1,171,168
2009	22,099,610	-	-	367,100	-	-	13,381,359	1,103,821
2010	19,812,747	-	-	272,305	-	-	10,973,772	1,313,685
2011	17,482,611	-	-	154,150	-	-	9,802,512	1,378,095
2012	19,471,927	-	-	234,700	-	-	11,144,213	1,569,147
2013	21,502,604	-	-	317,850	-	-	11,341,592	1,866,782
2014	22,136,235	-	-	318,250	-	-	10,027,813	1,996,027
2015	22,734,391	-	-	350,500	-	-	10,114,860	2,271,966
東1碼頭	376,749	-	-	350,500	-	-	-	-
東2碼頭	378,650	-	-	-	-	-	-	-
東3碼頭	-	-	-	-	-	-	-	-
東4碼頭	-	-	-	-	-	-	-	-
東5碼頭	567,000	-	-	-	-	-	-	567,000
東6碼頭	1,993,443	-	-	-	-	-	53,769	165,582
東7碼頭	3,648,924	-	-	-	-	-	1,997,839	477,086
東8碼頭	3,430,033	-	-	-	-	-	1,505,481	263,157
東9N/S碼頭	1,677,301	-	-	-	-	-	442,508	420,449
東10N/S碼頭	1,516,239	-	-	-	-	-	-	41,481
北1碼頭	723,267	-	-	-	-	-	-	-
北2碼頭	692,374	-	-	-	-	-	-	-
北5碼頭	669,618	-	-	-	-	-	-	333,432
北6碼頭	44,704	-	-	-	-	-	-	3,779
北7碼頭	762,120	-	-	-	-	-	-	-
西1碼頭	3,811,244	-	-	-	-	-	3,672,538	-
西2碼頭	2,442,725	-	-	-	-	-	2,442,725	-
西3碼頭	-	-	-	-	-	-	-	-

資料來源：麥寮工業區專用港管理股份有限公司



**Table 13. Classification of Imports (by Wharf)**

Unit : Revenue Ton

化學品			基本金屬			金屬製品			其他什貨
Chemical Products			Basic Metal			Metal Products			
肥料	動植物性油脂	其他	鋼鐵	廢鐵	其他	機件	電器機械器材	其他	
Fertilizer	Animal & Vegetable Grease	Others	Iron & Steel	Iron & Steel Scrap	Others	Machinery	Electrical Machinery, Apparatur	Others	General Merchandise
-	-	2,128,272	-	-	9,768	-	-	-	-
-	-	2,598,634	-	-	-	-	-	-	-
-	-	3,128,210	-	-	-	-	-	-	6,166
-	-	3,662,589	-	-	-	-	-	-	21,496
-	-	4,155,375	-	-	-	-	-	-	7,702
-	2,709	4,329,830	-	-	-	374	-	-	48,511
-	3,225	6,201,806	-	-	1,002	493	-	-	302,630
-	2,089	7,183,436	-	-	-	1,613	-	-	193,671
-	157	7,097,754	-	-	-	2,064	-	-	147,355
-	398	7,158,363	-	-	-	196	-	-	94,028
-	92	6,028,801	-	-	-	-	-	-	118,961
-	-	6,353,203	-	-	-	1,266	-	-	169,398
-	262	7,336,867	-	-	-	4,189	-	-	635,062
-	35	7,176,638	-	-	-	2,384	-	-	2,615,088
-	-	7,148,850	-	-	-	7,272	-	-	2,840,943
-	-	15,037	-	-	-	7,272	-	-	3,940
-	-	378,650	-	-	-	-	-	-	-
-	-	-	-	-	-	-	-	-	-
-	-	-	-	-	-	-	-	-	-
-	-	-	-	-	-	-	-	-	-
-	-	1,618,622	-	-	-	-	-	-	155,470
-	-	598,106	-	-	-	-	-	-	575,893
-	-	-	-	-	-	-	-	-	1,661,395
-	-	714,191	-	-	-	-	-	-	100,153
-	-	1,474,109	-	-	-	-	-	-	649
-	-	719,767	-	-	-	-	-	-	3,500
-	-	618,877	-	-	-	-	-	-	73,497
-	-	208,446	-	-	-	-	-	-	127,740
-	-	40,925	-	-	-	-	-	-	-
-	-	762,120	-	-	-	-	-	-	-
-	-	-	-	-	-	-	-	-	138,706
-	-	-	-	-	-	-	-	-	-
-	-	-	-	-	-	-	-	-	-

## 二、棧埠

### 附表十四 本港裝卸業者營運實績 (依公司別)

單位：計費噸

年(月)別	總計	台塑公司	南亞公司	台化公司	台塑石化	麥寮汽電
Year and Month	Total	Formosa Plastics Corp.	Nan Ya Plastics Corp.	Formosa Chemicals & Fiber Corp.	Formosa Petro Chemical Corp.	Mailiao Power Corp.
2001	26,041,428	1,734,837	361,460	846,347	13,299,008	9,570,802
2002	34,030,979	2,148,008	353,687	1,341,265	21,442,904	8,318,320
2003	41,397,426	2,674,789	512,050	1,276,821	31,976,683	4,264,920
2004	51,509,127	2,878,148	951,710	1,165,175	41,212,559	4,595,606
2005	58,911,212	3,300,788	969,961	1,748,139	47,116,736	4,931,050
2006	60,204,848	4,180,307	1,008,421	1,834,079	47,282,406	5,016,540
2007	68,374,622	4,233,728	1,554,613	2,997,363	53,313,822	5,289,865
2008	69,806,005	4,902,732	1,751,868	2,956,767	55,066,752	4,243,481
2009	70,159,727	4,154,754	1,672,748	2,806,740	55,677,975	5,130,831
2010	68,089,719	4,323,088	1,720,225	3,228,921	52,997,135	4,903,530
2011	60,375,984	3,786,476	1,467,225	2,582,020	46,714,988	4,876,760
2012	64,590,642	3,765,659	1,424,195	2,817,131	50,200,160	5,314,721
2013	70,293,571	3,856,530	1,540,390	3,693,834	55,097,906	4,785,828
2014	71,901,319	3,460,945	1,500,561	3,666,157	57,342,865	4,509,563
2015	73,379,445	3,551,263	1,633,504	3,211,487	57,913,494	5,630,413
一月(Jan.)	6,178,194	412,563	177,517	287,012	4,446,515	744,361
二月(Feb.)	5,710,611	189,156	123,536	303,788	4,330,518	646,645
三月(Mar.)	5,279,580	236,104	190,232	324,775	4,363,035	80,134
四月(Apr.)	6,470,609	357,847	142,951	294,771	4,744,111	826,792
五月(May)	6,498,475	333,274	159,499	274,495	5,406,271	218,181
六月(June)	6,807,786	371,754	133,159	261,603	5,493,598	422,670
七月(July)	6,471,923	190,731	123,320	293,511	4,922,472	799,173
八月(Aug.)	5,421,386	220,974	87,659	241,819	4,202,824	537,949
九月(Sep.)	5,274,776	291,878	127,841	207,959	4,189,155	308,593
十月(Oct.)	7,461,348	487,814	121,904	215,079	6,034,572	451,681
十一月(Nov.)	6,186,737	298,225	133,044	251,478	4,959,919	429,011
十二月(Dec.)	5,618,020	160,943	112,842	255,197	4,820,504	165,223

資料來源：麥寮工業區專用港管理股份有限公司

二、Stevedoring&Warehousing

Table 14. Volume of Cargoes Handled by Stevedoring & Warehousing Companies

Unit : Revenue Ton

中塑油品	大連化工	長春樹脂	南中石化	台塑重工	台塑旭纖	台灣醋酸	台塑光電	其他
Simosa Oil Corp Ltd.	Dairen Chemical Corp.	Chang Chun Plastics Corp.	Nan Chung Petrochemical Corp.	Formosa Heavy Industries Corp.	Formosa Asahi Spandex CO. Ltd	Formosa Bp Chemicals Corp.	Formosa Plasma Display Corp.	Others
-	92,461	-	126,745	8,868	-	-	-	900
71,138	194,893	23,675	137,089	-	-	-	-	-
248,154	247,102	24,360	164,305	6,166	-	-	2,076	-
226,464	253,777	32,091	185,023	5,604	2,231	739	-	-
350,600	253,088	37,055	182,361	7,173	5,313	8,948	-	-
146,043	404,607	39,792	132,759	2,430	3,367	154,097	-	-
138,281	443,190	104,759	149,693	1,820	2,829	144,659	-	-
97,368	391,405	73,683	130,357	1,887	2,423	187,282	-	-
91,057	296,743	75,432	74,193	2,060	2,405	174,789	-	-
162,523	378,265	95,141	98,110	196	2,458	180,127	-	-
178,997	282,496	249,082	54,270	3,592	1,087	178,991	-	-
203,332	289,417	337,218	80,215	3,324	638	154,632	-	-
262,986	245,132	488,945	56,413	4,640	1,360	259,607	-	-
243,764	256,099	560,656	108,949	2,056	447	249,257	-	-
332,560	231,222	464,312	100,389	11,278	-	299,523	-	-
31,208	22,101	31,113	2,989	-	-	22,815	-	-
10,031	19,769	50,920	5,953	-	-	30,295	-	-
33,940	13,276	22,354	6,934	263	-	8,533	-	-
24,609	17,709	31,806	5,946	340	-	23,727	-	-
27,165	12,337	30,046	1,974	1,275	-	33,958	-	-
21,732	24,442	47,336	3,977	163	-	27,352	-	-
30,747	24,240	53,723	9,934	193	-	23,879	-	-
31,662	22,941	37,377	9,983	1,610	-	26,588	-	-
37,740	24,958	43,540	13,940	522	-	28,650	-	-
36,780	14,136	56,850	15,904	-	-	26,628	-	-
29,597	20,180	26,856	12,948	2,687	-	22,792	-	-
17,349	15,133	32,391	9,907	4,225	-	24,306	-	-

附表十五 裝卸貨物噸量

單位：計費噸

年(月)別 Year and Month	裝卸貨物噸量 Loading							
	總計	合計	什貨	管道	貨櫃	散貨	其他散裝	其他
	Total	Total	General Cargoes	Pipe	Containers	Bulk Cargoes	Others Cargoes in Bulk	Others
2001	26,041,428	4,178,784	293,580	3,527,883	357,321	-	-	-
2002	34,030,979	7,918,677	224,834	6,774,926	853,491	65,426	-	-
2003	41,397,426	10,670,493	200,319	9,425,168	941,690	-	103,316	-
2004	51,509,126	13,893,898	78,055	12,605,891	1,037,031	-	172,921	-
2005	58,911,212	16,918,407	135,989	15,627,469	934,218	-	220,731	-
2006	60,204,848	17,501,588	172,710	16,172,854	882,627	-	273,397	-
2007	68,374,622	20,373,429	290,359	18,885,774	924,074	-	273,222	-
2008	69,806,005	21,665,723	406,906	20,187,051	624,626	-	447,140	-
2009	70,159,727	21,639,950	440,360	20,017,457	623,627	-	558,506	-
2010	68,089,719	19,843,095	515,846	18,270,920	589,240	-	467,089	-
2011	60,375,984	17,506,100	515,992	16,255,605	339,266	-	395,237	-
2012	64,590,642	19,151,873	373,823	18,042,618	280,487	-	454,945	-
2013	70,293,571	21,078,215	101,910	19,609,639	550,807	-	815,859	-
2014	71,901,319	21,705,929	7,056	20,813,240	129,552	-	756,081	-
2015	73,379,445	22,562,220	26,271	21,517,969	-	-	1,017,980	-
一月(Jan.)	6,178,194	2,036,299	-	1,968,467	-	-	67,832	-
二月(Feb.)	5,710,611	1,861,691	-	1,784,208	-	-	77,483	-
三月(Mar.)	5,279,580	1,785,855	263	1,720,120	-	-	65,472	-
四月(Apr.)	6,470,609	1,723,217	340	1,610,354	-	-	112,523	-
五月(May)	6,498,475	2,159,905	1,275	2,076,651	-	-	81,979	-
六月(June)	6,807,786	2,045,867	163	1,948,727	-	-	96,977	-
七月(July)	6,471,923	1,483,133	193	1,403,454	-	-	79,486	-
八月(Aug.)	5,421,386	1,730,605	1,609	1,636,520	-	-	92,476	-
九月(Sep.)	5,274,776	1,744,331	5,516	1,681,838	-	-	56,977	-
十月(Oct.)	7,461,348	2,231,218	5,000	2,095,913	-	-	130,305	-
十一月(Nov.)	6,186,737	1,847,276	7,687	1,770,097	-	-	69,492	-
十二月(Dec.)	5,618,020	1,912,823	4,225	1,821,620	-	-	86,978	-

資料來源：麥寮工業區專用港管理股份有限公司

**Table 15. Volume of Cargoes Handled**

Unit : Revenue Ton

卸 貨							
Unloading							
合 計	散貨-工鹽	散貨-燃煤	其他散裝	管 道	什 貨	貨 櫃	其 他
Total	Salt	Coal	Other Cargoes in Bulk	Pipe	General Cargoes	Containers	Others
21,862,644	809,479	9,550,634	71,672	11,404,239	26,620	-	-
26,112,302	864,124	8,312,020	111,771	16,789,864	34,523	-	-
30,726,933	1,057,068	9,186,479	71,739	20,383,154	26,417	2,076	-
37,615,228	1,267,204	11,669,042	235,055	24,299,356	144,571	-	-
41,992,805	1,306,192	12,321,246	329,703	27,983,648	52,016	-	-
42,703,260	1,817,708	12,683,935	405,580	27,746,569	49,468	-	-
48,001,193	1,698,714	14,052,202	458,389	31,755,007	36,881	-	-
48,140,282	2,229,605	13,469,664	443,998	31,991,580	5,435	-	-
48,519,777	1,653,261	13,642,516	338,586	32,861,109	24,305	-	-
48,246,624	1,827,364	13,290,129	365,791	32,734,353	28,987	-	-
42,869,884	1,861,659	12,711,049	306,936	27,964,963	25,277	-	-
45,438,769	1,721,704	13,247,936	339,560	30,105,210	24,359	-	-
49,215,356	1,791,615	14,104,186	128,638	33,163,405	27,512	-	-
50,195,390	1,684,165	13,092,006	122,978	35,267,812	28,429	-	-
50,817,225	1,652,327	14,029,669	-	35,106,397	28,832	-	-
4,141,895	232,419	1,497,939	-	2,406,960	4,577	-	-
3,848,920	77,006	1,151,763	-	2,618,489	1,662	-	-
3,493,725	77,006	714,746	-	2,701,973	-	-	-
4,747,392	157,265	1,373,349	-	3,211,638	5,140	-	-
4,338,570	232,369	829,599	-	3,274,634	1,968	-	-
4,761,919	211,811	1,000,337	-	3,547,611	2,160	-	-
4,988,790	-	2,228,199	-	2,758,391	2,200	-	-
3,690,781	71,296	957,051	-	2,660,236	2,198	-	-
3,530,445	138,263	722,681	-	2,669,501	-	-	-
5,230,130	315,534	1,784,066	-	3,128,427	2,103	-	-
4,339,461	139,358	1,206,114	-	2,990,230	3,759	-	-
3,705,197	-	563,825	-	3,138,307	3,065	-	-

附表十六 裝卸貨物效率

年(月)別 Year and Month	合 計 Total		散 貨 - 工 鹽 Bulk Cargoes		散 貨 - 燃 煤 Bulk Cargoes		其 他 散 裝 Other Cargoes in Bulk	
	裝量/工時	卸量/工時	裝量/工時	卸量/工時	裝量/工時	卸量/工時	裝量/工時	卸量/工時
	V./H.	V./H.	V./H.	V./H.	V./H.	V./H.	V./H.	V./H.
2001	424	502	-	745	-	1,165	-	256
2002	445	573	-	839	-	1,463	-	255
2003	384	669	-	835	-	1,705	297	421
2004	319	591	-	800	-	1,698	279	223
2005	334	552	-	694	-	1,491	313	224
2006	313	549	-	705	-	1,511	278	216
2007	318	622	-	758	-	1,666	292	406
2008	321	714	-	757	-	1,849	274	423
2009	315	696	-	757	-	1,837	271	412
2010	320	674	-	762	-	1,770	258	371
2011	321	682	-	759	-	1,781	261	411
2012	318	694	-	760	-	1,800	268	396
2013	330	684	-	762	-	1,741	268	392
2014	450	800	-	759	-	1,783	272	383
2015	464	864	-	752	-	1,692	257	-
一 月(Jan.)	518	853	-	753	-	1,716	266	-
二 月(Feb.)	518	857	-	769	-	1,725	271	-
三 月(Mar.)	455	1,043	-	751	-	1,758	258	-
四 月(Apr.)	444	846	-	742	-	1,712	249	-
五 月(May)	449	847	-	735	-	1,723	251	-
六 月(June)	451	842	-	750	-	1,680	255	-
七月(July)	454	833	-	-	-	1,586	249	-
八月(Aug.)	449	821	-	742	-	1,619	250	-
九月(Sep.)	458	850	-	763	-	1,702	258	-
十月(Oct.)	456	849	-	759	-	1,695	258	-
十一月(Nov.)	459	846	-	755	-	1,683	260	-
十二月(Dec.)	457	881	-	-	-	1,701	255	-

資料來源：葵寮工業區專用港管理股份有限公司

**Table 16. Efficiency of Cargoes Handled**

管 道		什 貨		貨 櫃		其 他	
Pipe		General Cargoes		Containers		Others	
裝量/工時	卸量/工時	裝量/工時	卸量/工時	裝量/工時	卸量/工時	裝量/工時	卸量/工時
V./H.	V./H.	V./H.	V./H.	V./H.	V./H.	V./H.	V./H.
693	650	155	170	-	26	-	-
734	673	156	178	-	32	-	-
681	639	174	169	-	32	-	-
782	623	171	127	29	38	-	-
784	624	163	145	35	44	-	-
759	625	162	130	37	46	-	-
741	631	186	152	34	43	-	-
735	614	235	190	35	45	-	-
735	616	222	318	33	44	-	-
746	621	214	240	33	44	-	-
754	635	218	322	33	43	-	-
752	628	218	316	32	44	-	-
772	624	225	325	32	43	-	-
761	622	406	324	33	42	-	-
764	617	342	317	-	-	-	-
769	623	-	320	-	-	-	-
765	611	-	323	-	-	-	-
759	619	349	-	-	-	-	-
749	620	335	310	-	-	-	-
755	617	340	311	-	-	-	-
760	619	339	319	-	-	-	-
770	604	343	309	-	-	-	-
758	611	339	312	-	-	-	-
769	615	347	320	-	-	-	-
771	621	339	322	-	-	-	-
773	619	345	328	-	-	-	-
770	625	346	317	-	-	-	-

附表十七 貨櫃裝卸量

單位：貨櫃：個  
貨物：公噸

年 (月) 別	總計		進 口			
	Grand Total		合 計		20 呎	
	櫃 數 No. of Container	TEU	Total		20 Ft.	
實 櫃 Loaded Container			空 櫃 Empty Container	實 櫃 Loaded Container	空 櫃 Empty Container	
2001	17,903	21,440	-	17,903	-	14,366
2002	39,471	47,070	-	39,471	-	31,872
2003	46,649	57,208	396	46,253	1	36,089
2004	48,670	59,576	-	48,670	-	37,764
2005	43,059	54,174	-	43,059	-	31,944
2006	42,729	53,306	-	42,729	-	32,152
2007	46,338	54,336	-	46,338	-	38,340
2008	30,808	36,672	-	30,808	-	24,944
2009	31,749	37,254	-	31,749	-	26,244
2010	29,096	34,848	-	29,096	-	23,344
2011	17,489	20,659	-	17,489	-	14,319
2012	13,923	16,457	-	13,923	-	11,389
2013	27,472	34,704	-	27,472	-	20,240
2014	5,549	7,326	-	5,549	-	3,772
2015	-	-	-	-	-	-
一 月(Jan.)	-	-	-	-	-	-
二 月(Feb.)	-	-	-	-	-	-
三 月(Mar.)	-	-	-	-	-	-
四 月(Apr.)	-	-	-	-	-	-
五 月(May)	-	-	-	-	-	-
六 月(June)	-	-	-	-	-	-
七 月(July)	-	-	-	-	-	-
八 月(Aug.)	-	-	-	-	-	-
九 月(Sep.)	-	-	-	-	-	-
十 月(Oct.)	-	-	-	-	-	-
十一月(Nov.)	-	-	-	-	-	-
十二月(Dec.)	-	-	-	-	-	-

資料來源：麥寮工業區專用港管理股份有限公司。





附表十七 貨櫃裝卸量(續完)

單位：貨櫃：個  
貨物：公噸

年 (月) 別	總計		出 口			
	Grand Total		合 計		20 呎	
	櫃 數 No. of Container	TEU	Total		20 Ft.	
			實 櫃 Loaded Container	空 櫃 Empty Container	實 櫃 Loaded Container	空 櫃 Empty Container
2001	18,507	22,386	18,507	-	14,628	-
2002	44,282	52,638	44,282	-	35,926	-
2003	50,593	61,480	50,567	26	39,691	15
2004	52,876	64,790	52,803	73	40,934	28
2005	47,059	59,058	47,059	-	35,060	-
2006	45,430	55,804	45,046	384	34,813	243
2007	47,856	56,000	47,771	85	39,682	30
2008	31,908	38,113	31,855	53	25,662	41
2009	31,860	37,800	31,860	-	25,920	-
2010	30,463	36,761	30,463	-	24,165	-
2011	17,297	20,678	17,297	-	13,916	-
2012	13,958	16,317	13,958	-	11,599	-
2013	28,068	35,546	28,068	-	20,590	-
2014	6,434	8,531	6,434	-	4,337	-
2015	-	-	-	-	-	-
一 月(Jan.)	-	-	-	-	-	-
二 月(Feb.)	-	-	-	-	-	-
三 月(Mar.)	-	-	-	-	-	-
四 月(Apr.)	-	-	-	-	-	-
五 月(May)	-	-	-	-	-	-
六 月(June)	-	-	-	-	-	-
七 月(July)	-	-	-	-	-	-
八 月(Aug.)	-	-	-	-	-	-
九 月(Sep.)	-	-	-	-	-	-
十 月(Oct.)	-	-	-	-	-	-
十一月(Nov.)	-	-	-	-	-	-
十二月(Dec.)	-	-	-	-	-	-

資料來源：麥寮工業區專用港管理股份有限公司。



## 附表十八 倉儲業務狀況

單位：公噸

年(月)別	期末倉棧總量 (A) Total Volume of Warehouse at the End of Year	本期進倉量 (B) Receiving	本期進倉量 (C) (不包括存放 貨櫃場部份) Receiving (Excluding Volume of Cargoes Stored in Container Vard	本期出倉量 Delivery	期末進倉量 (D) Remaining
Year and Month	(噸) (Ton)	(噸) (Ton)	(噸) (Ton)	(噸) (Ton)	(噸) (Ton)
2001					
2002					
2003					
2004					
2005					
2006					
2007					
2008					
2009					
2010					
2011					
2012					
2013					
2014					
2015					
一月(Jan.)					
二月(Feb.)					
三月(Mar.)					
四月(Apr.)					
五月(May)					
六月(June)					
七月(July)					
八月(Aug.)					
九月(Sep.)					
十月(Oct.)					
十一月(Nov.)					
十二月(Dec.)					

資料來源：麥寮工業區專用港管理股份有限公司

**Table 18. Volume of Warehousing**

Unit : M.T.

本期延日存倉量( E ) ( 不包括存放露 置場及貨櫃場部 份) Storage ( Including Volume of Cargoes Stored in Open Space)	本期延日存倉量( F ) ( 不包括存放露 置場及貨櫃場部 份) Storage ( Excluding Volume of Cargoes Stored in Open Space)	倉棧平均使用率 E / (Ax當月天數)	貨物平均存倉日數 E / (前一期之D+B) Average Cargo Remaining Days Per Ton	貨物裝卸量(不包 括管道、貨櫃裝 卸)(G) Volume of Cargoes Handled(Excludeing Pipe & Container Cargoes)	貨物進倉比率 C / G Percentage of Cargoes Stored
( 噸日 ) ( Ton - Day )	( 噸日 ) ( Ton - Day )	%	( 日 ) ( Day )	( 噸 ) ( Ton )	%

三、航政監理  
附表十九 工業專用港區域海事案件

單位：艘數

年(月)別 Year and Month	Vessels of Ship - Wreck									
	合計 Total	碰撞	觸礁 或 擱淺	失火	爆炸	洩漏	傾覆	機械 故障	非常 變故	其他
2001										
2002										
2003	2	-	-	-	-	-	-	1	-	1
2004	3	1	-	-	-	1	-	-	1	-
2005	8	6	-	-	-	-	-	-	-	2
2006	3	1	-	-	-	-	-	-	-	2
2007	5	-	1	-	-	-	-	2	-	2
2008	4	3	-	-	-	-	-	-	-	1
2009	7	2	1	-	-	1	-	-	-	3
2010	5	3	-	-	-	-	-	1	-	1
2011	8	4	-	-	-	1	-	1	2	-
2012	-	-	-	-	-	-	-	-	-	-
2013	1	1	-	-	-	-	-	-	-	-
2014	1	-	-	-	-	-	-	-	-	1
2015	5	2	-	-	-	-	-	-	-	3
一月(Jan.)	-	-	-	-	-	-	-	-	-	-
二月(Feb.)	-	-	-	-	-	-	-	-	-	-
三月(Mar.)	1	1	-	-	-	-	-	-	-	-
四月(Apr.)	1	-	-	-	-	-	-	-	-	1
五月(May.)	-	-	-	-	-	-	-	-	-	-
六月(June.)	-	-	-	-	-	-	-	-	-	-
七月(July.)	1	-	-	-	-	-	-	-	-	1
八月(Aug.)	-	-	-	-	-	-	-	-	-	-
九月(Sep.)	-	-	-	-	-	-	-	-	-	-
十月(Oct.)	2	1	-	-	-	-	-	-	-	1
十一月(Nov.)	-	-	-	-	-	-	-	-	-	-
十二月(Dec.)	-	-	-	-	-	-	-	-	-	-

資料來源：麥寮工業區專用港管理股份有限公司

**三、Supervising and Administering of navigation**  
**Table 19. Ship - Wreck**

Unit : Vessels

人 員 傷 亡 (人) Number of Casualties								船 體 損 害	
船 員 Seamen				旅 客 Casualties				船 損	船 沉
合 計 Total	負 傷	失 蹤 Missing	死 亡 Deae	合 計 Total	負 傷	失 蹤 Missing	死 亡 Deae		
2	-	-	2	-	-	-	-	-	-
1	-	-	1	-	-	-	-	2	-
-	-	-	-	-	-	-	-	4	-
3	3	-	-	-	-	-	-	1	-
-	-	-	-	-	-	-	-	3	-
3	2	1	-	-	-	-	-	2	-
1	-	-	1	-	-	-	-	4	-
-	-	-	-	1	1	-	-	5	-
2	2	-	-	-	-	-	-	4	-
-	-	-	-	-	-	-	-	-	-
-	-	-	-	-	-	-	-	1	-
-	-	-	-	-	-	-	-	1	-
3	1	-	2	-	-	-	-	3	-
-	-	-	-	-	-	-	-	-	-
-	-	-	-	-	-	-	-	-	-
-	-	-	-	-	-	-	-	1	-
-	-	-	-	-	-	-	-	1	-
-	-	-	-	-	-	-	-	-	-
-	-	-	-	-	-	-	-	-	-
2	-	-	2	-	-	-	-	-	-
-	-	-	-	-	-	-	-	-	-
-	-	-	-	-	-	-	-	-	-
1	1	-	-	-	-	-	-	1	-
-	-	-	-	-	-	-	-	-	-
-	-	-	-	-	-	-	-	-	-

四、財務  
附表二十 營 業 總 收 入

單位：新台幣元

年(月)別	7=5+6	5=1+2+3+4	1
Year and Month	總 計 Grand Total	營 業 收 入 Operating Revenue	港 灣 設 施 使 用 收 入 Facilities Usage Revenue
2001	1,713,532,506	1,503,529,918	678,921,665
2002	2,114,443,106	1,931,886,166	969,599,978
2003	2,480,584,209	2,417,832,652	1,227,143,023
2004	3,062,894,485	2,988,776,216	1,511,159,274
2005	3,356,493,634	3,285,882,302	1,666,146,703
2006	3,430,154,796	3,382,657,949	1,719,710,703
2007	4,209,976,723	3,993,368,414	1,982,687,717
2008	4,044,733,179	3,958,382,250	2,015,268,804
2009	4,141,160,700	3,954,892,930	2,017,722,074
2010	4,102,496,618	4,018,819,093	1,949,872,975
2011	3,666,667,917	3,570,620,369	1,732,244,013
2012	4,109,789,714	3,759,718,826	1,829,916,856
2013	4,801,184,935	4,360,961,096	2,045,579,769
2014	4,426,303,653	4,238,682,031	2,065,932,247
2015	4,378,523,111	4,146,516,023	2,100,720,458
一月(Jan.)	358,483,675	353,035,441	169,275,392
二月(Feb.)	348,179,412	344,469,793	173,308,710
三月(Mar.)	378,715,407	335,983,618	166,441,609
四月(Apr.)	370,275,648	366,328,178	167,490,269
五月(May.)	340,959,869	330,571,602	175,587,582
六月(June.)	435,138,403	396,370,032	216,352,729
七月(July.)	323,332,867	317,766,083	156,655,539
八月(Aug.)	327,875,048	324,186,372	170,504,039
九月(Sep.)	383,021,882	350,002,910	183,964,008
十月(Oct.)	366,402,769	362,822,044	174,979,129
十一月(Nov.)	384,499,758	340,756,941	174,564,735
十二月(Dec.)	361,638,373	324,223,009	171,596,717

資料來源：麥寮工業區專用港管理股份有限公司



四、Finance

Table 20. Total Operating Revenue

Unit : N T \$			
2	3	4	6
港灣業務收入 Port Revenue	棧埠業務收入 Stevedoring & Warehousing Revenue	租金收入 Rent Revenue of Operating Assets	營業外收入 Non - Operating Revenue
129,158,163	695,450,090	-	210,002,588
149,644,590	812,641,598	-	182,556,940
163,040,374	1,027,649,255	-	62,751,557
190,961,727	1,286,655,215	-	74,118,269
210,673,015	1,409,062,584	-	70,611,332
224,626,821	1,438,320,425	-	47,496,847
279,545,337	1,731,135,360	-	216,608,309
269,659,269	1,673,454,177	-	86,350,929
271,211,173	1,665,959,683	-	186,267,770
273,834,416	1,795,111,702	-	83,677,525
262,261,469	1,576,114,887	-	96,047,548
258,964,607	1,670,837,363	-	350,070,888
307,969,369	2,007,411,958	-	440,223,839
300,171,248	1,872,578,536	-	187,621,622
307,514,930	1,738,280,635	-	232,007,088
25,205,144	158,554,905	-	5,448,234
25,385,852	145,775,231	-	3,709,619
23,990,629	145,551,380	-	42,731,789
24,840,129	173,997,780	-	3,947,470
25,055,698	129,928,322	-	10,388,267
29,204,039	150,813,264	-	38,768,371
24,059,683	137,050,861	-	5,566,784
24,924,650	128,757,683	-	3,688,676
27,480,729	138,558,173	-	33,018,972
26,606,042	161,236,873	-	3,580,725
25,201,032	140,991,174	-	43,742,817
25,561,303	127,064,989	-	37,415,364

## 附表二十一 營 業 總 支 出

單位：新台幣元

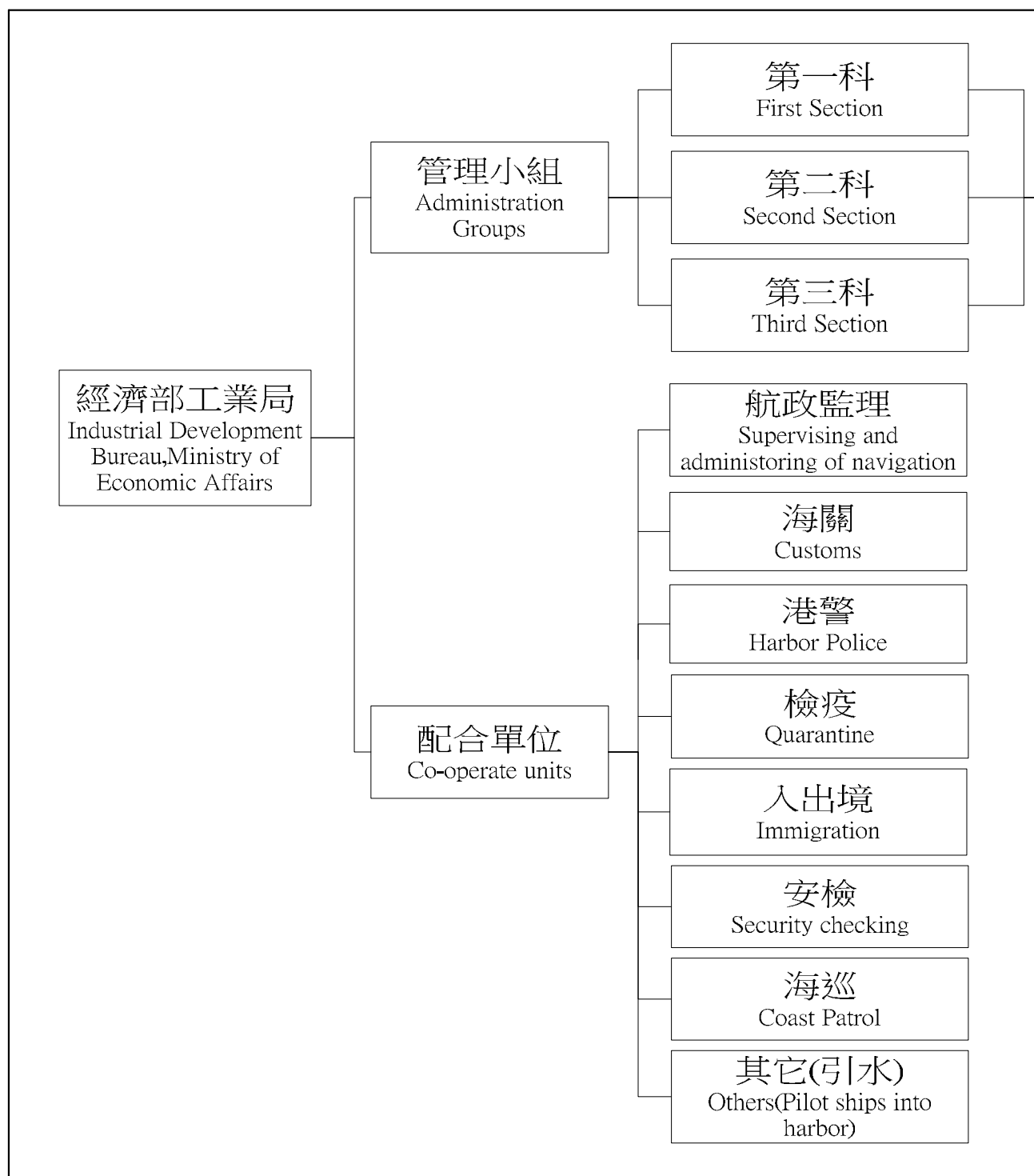
年 (月) 別	17=15+16	15=8+9+10+11+12+13+14	8	9	10
Year and Month	總 計 Grand Total	營 業 支 出 Operating Expense	港 灣 費 用 Port Expense	棧 埠 費 用 Stevedoring & Warehousing Expense	維 持 費 用 Command Expense
2001	1,342,041,944	1,007,047,993	-	633,034,287	-
2002	1,513,072,746	1,253,395,970	-	724,907,262	-
2003	1,776,135,585	1,542,378,958	489,572,751	846,578,123	-
2004	2,057,280,740	1,685,344,858	543,550,653	925,211,062	-
2005	1,828,340,397	1,750,994,466	576,109,936	981,350,944	-
2006	2,401,306,693	2,111,193,224	905,062,669	989,089,755	-
2007	2,550,049,377	2,367,194,764	944,246,643	1,106,659,306	-
2008	2,465,699,176	2,267,819,359	732,746,796	1,200,196,316	-
2009	2,423,886,449	2,372,903,738	912,031,004	1,239,716,920	-
2010	2,512,559,966	2,428,173,744	966,475,610	1,248,012,352	-
2011	2,547,996,901	2,481,267,557	996,579,878	1,272,738,738	-
2012	2,914,175,058	2,864,363,418	1,224,506,903	1,381,281,548	-
2013	2,729,549,234	2,685,362,167	991,543,147	1,450,379,947	-
2014	3,061,981,529	2,900,317,680	1,423,064,706	1,261,589,471	-
2015	2,946,636,553	2,703,484,299	1,244,391,666	1,241,382,620	-
一 月(Jan.)	218,170,431	215,050,411	103,377,376	92,283,730	-
二 月(Feb.)	193,136,225	189,120,446	82,581,206	89,187,376	-
三 月(Mar.)	213,360,776	210,599,803	90,444,308	100,266,187	-
四 月(Apr.)	216,182,086	213,554,540	87,985,969	105,143,124	-
五 月(May.)	409,872,088	208,088,207	90,896,599	98,898,176	-
六 月(June.)	214,897,801	212,567,327	91,173,701	105,153,888	-
七 月(July.)	223,945,691	221,205,262	94,986,648	110,549,014	-
八 月(Aug.)	247,970,252	245,167,609	119,898,936	108,749,256	-
九 月(Sep.)	197,539,614	183,538,879	62,589,276	104,338,586	-
十 月(Oct.)	220,813,424	218,386,638	93,805,470	106,107,570	-
十一月(Nov.)	337,854,236	335,507,967	209,696,109	106,134,724	-
十二月(Dec.)	252,893,929	250,697,210	116,956,068	114,570,989	-

資料來源：麥寮工業區專用港管理股份有限公司

Unit : N T \$

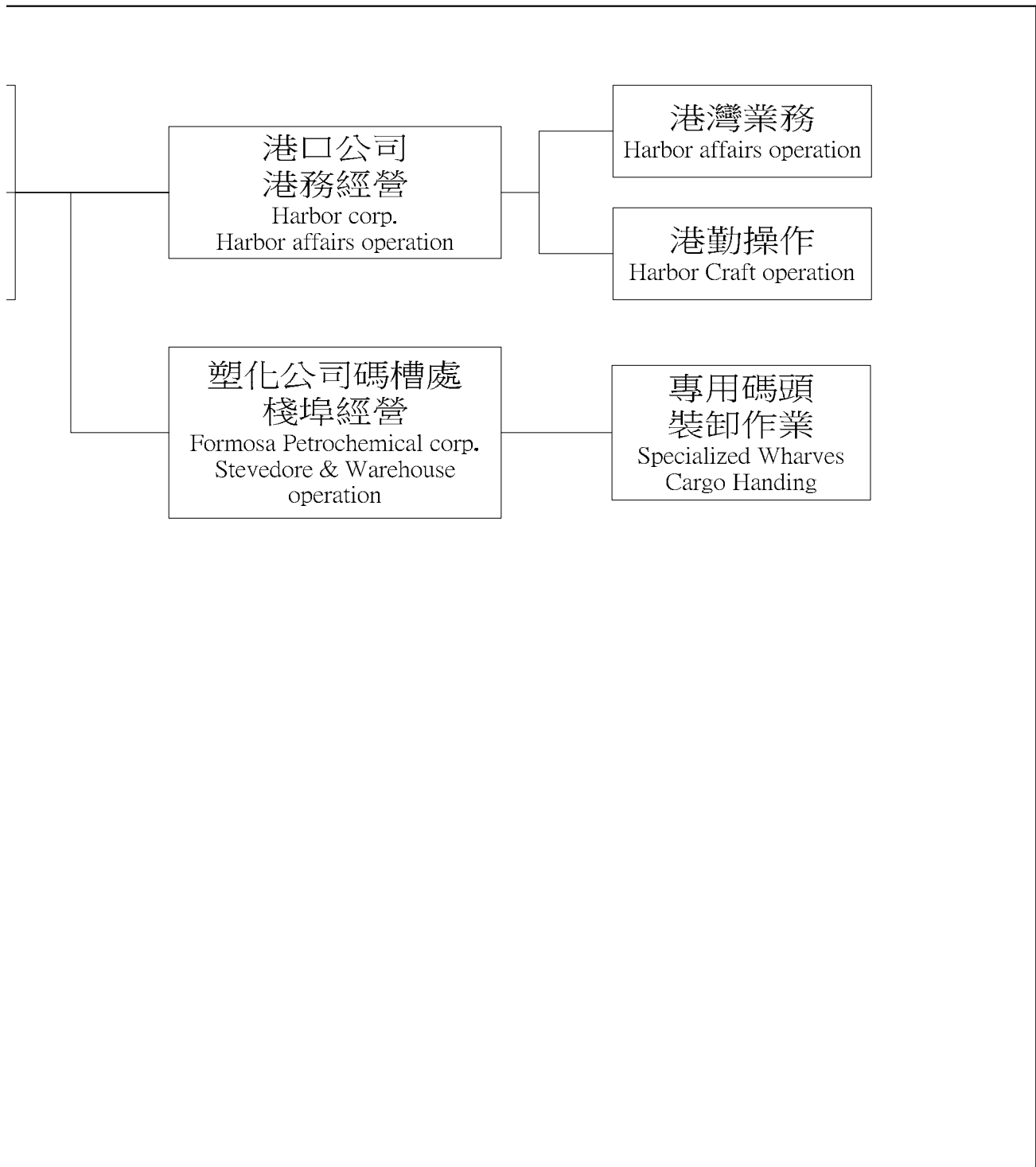
11	12	13	14	16	18=7-17
其他營業費用 Other Operating Expense	業務費用 Business Expense	管理費用 Administration Expense	土地租金 Rent Expense	營業外支出 Non - Operating Expense	盈餘 Surplus
-	295,506,644	78,507,062	-	334,993,951	371,490,562
-	382,578,274	145,910,434	-	259,676,776	601,370,360
107,508,794	-	98,719,290	-	233,756,627	704,448,624
96,915,734	-	119,667,409	-	371,935,882	1,005,613,745
68,003,627	-	102,325,331	23,204,628	77,345,931	1,528,153,237
61,356,778	20,059,866	112,419,528	23,204,628	290,113,469	1,028,848,103
150,551,995	-	142,532,192	23,204,628	182,854,613	1,659,927,346
146,131,160	-	165,540,459	23,204,628	197,879,817	1,579,034,003
75,257,373	-	122,693,813	23,204,628	50,982,711	1,717,274,251
53,041,412	-	137,439,742	23,204,628	84,386,222	1,589,936,652
48,003,391	-	140,740,922	23,204,628	66,729,344	1,118,671,016
49,479,058	-	185,891,281	23,204,628	49,811,640	1,195,614,656
47,853,475	-	172,380,970	23,204,628	44,187,067	2,071,635,701
29,820,010	-	162,638,865	23,204,628	161,663,849	1,364,322,124
32,296,886	-	162,208,499	23,204,628	243,152,254	1,431,886,558
2,589,248	-	14,866,338	1,933,719	3,120,020	140,313,244
2,396,675	-	13,021,470	1,933,719	4,015,779	155,043,187
2,815,489	-	15,140,100	1,933,719	2,760,973	165,354,631
2,739,329	-	15,752,399	1,933,719	2,627,546	154,093,562
2,672,328	-	13,687,385	1,933,719	201,783,881	(68,912,219)
2,533,448	-	11,772,571	1,933,719	2,330,474	220,240,602
2,688,242	-	11,047,639	1,933,719	2,740,429	99,387,176
2,724,000	-	11,861,698	1,933,719	2,802,643	79,904,796
2,729,000	-	11,948,298	1,933,719	14,000,735	185,482,268
2,672,000	-	13,867,879	1,933,719	2,426,786	145,589,345
2,794,000	-	14,949,415	1,933,719	2,346,269	46,645,522
2,943,127	-	14,293,307	1,933,719	2,196,719	108,744,444

五、組織與人事  
附表二十二 港內各作業組織系統表



五、 Organization and Personnel matters

Table 22. Organization Chart



附表二十三 港內作業人數（依組織別）

單位：人

年(底)別 End of Year	總計 Total		麥寮港管理小組 Mailiao Harbor Administration		民營事業 Harbor Operation Company	
	職員	工員	職員	工員	職員	工員
	Staff	Work Men	Staff	Work Men	Staff	Work Men
2001	402	6	4	6	38	-
2002	415	5	3	5	39	-
2003	455	5	2	5	39	-
2004	324	178	4	3	43	-
2005	313	191	10	-	43	-
2006	255	258	10	-	44	-
2007	279	268	9	-	41	-
2008	280	278	8	-	41	-
2009	249	316	8	-	42	-
2010	248	312	7	-	41	-
2011	272	328	7	-	41	-
2012	260	319	7	-	41	-
2013	252	350	7	1	40	-
2014	367	335	7	1	41	-
2015	377	281	6	1	41	-

資料來源：麥寮工業區專用港管理股份有限公司

**Table 23. Number of Staff & Workmen of the Bureau and Branch Offices**

Unit : Person

港灣作業機構 Marine Service Org.		棧埠作業機構 Marine Terminal Org.		船舶機械修造工廠 Ship & Machinery Works	
職員 Staff	工員 Work Men	職員 Staff	工員 Work Men	職員 Staff	工員 Work Men
77	-	283	-	-	-
81	-	292	-	-	-
78	-	336	-	-	-
93	-	184	175	-	-
78	14	182	177	-	-
11	85	190	173	-	-
15	90	214	178	-	-
10	88	221	190	-	-
10	95	189	221	-	-
10	97	190	215	-	-
10	103	214	225	-	-
10	103	202	216	-	-
10	134	195	215	-	-
9	129	310	205	-	-
6	126	324	154	-	-

附表二十四 港內作業人員學歷（依組織別）

單位：人

年(底)別 End of Year	總計 Total		研究所 Graduate School		大學 Collage	
	男	女	男	女	男	女
	Male	Female	Male	Female	Male	Female
2001	397	11	7	-	38	3
2002	408	12	7	-	36	3
2003	446	14	7	-	35	4
2004	470	32	8	-	60	5
2005	466	38	6	1	57	8
2006	473	40	6	1	59	9
2007	501	46	6	1	59	9
2008	517	41	6	1	63	8
2009	525	40	7	2	66	7
2010	523	37	8	1	70	6
2011	563	37	10	-	74	6
2012	551	28	11	-	71	6
2013	577	25	13	-	85	6
2014	681	21	15	1	104	6
2015	639	19	15	1	113	6
管理小組	5	2	3	-	1	2
民營事業	34	7	3	1	11	3
港灣作業機構	130	2	2	-	28	1
棧埠作業機構	470	8	7	-	73	-

資料來源：麥寮工業區專用港管理股份有限公司



**Table 24. Number of Staff by Education**

Unit : Person

專 科 Junior Collage		高 中 職 Senior High School		國 中 Junior High School		國 小 Primary School	
男 Male	女 Female	男 Male	女 Female	男 Male	女 Female	男 Male	女 Female
115	5	192	1	34	1	11	1
120	5	193	2	35	1	17	1
112	5	228	3	45	1	19	1
187	11	115	6	79	4	21	6
191	12	119	5	78	6	15	6
203	13	110	5	83	6	12	6
218	13	120	8	83	6	15	9
233	12	126	9	78	5	11	6
230	11	129	10	82	5	11	5
235	12	128	14	73	2	9	2
254	12	157	14	65	2	3	3
257	7	151	12	60	2	1	1
290	4	127	12	52	2	10	1
356	2	140	10	53	1	13	1
344	2	112	9	43	1	12	-
1	-	-	-	-	-	-	-
18	-	2	3	-	-	-	-
39	1	34	-	15	-	12	-
286	1	76	6	28	1	-	-

附表二十五 港內作業人員年齡（依組織別）

單位：人

年(底)別 End of Year	總計 Total		19歲以下 Age Under		20-24歲 Age		25-29歲 Age		30-34歲 Age		35-39歲 Age	
	男	女	男	女	男	女	男	女	男	女	男	女
	Male	Female	Male	Female	Male	Female	Male	Female	Male	Female	Male	Female
2001	397	11	-	-	38	2	136	8	96	-	66	1
2002	408	12	-	-	26	1	133	8	114	2	69	1
2003	446	14	-	-	41	1	143	9	121	3	73	1
2004	470	32	1	-	6	2	88	12	123	6	83	6
2005	466	38	1	-	6	2	85	12	116	10	76	7
2006	473	40	2	-	5	2	83	10	105	8	83	12
2007	501	46	1	-	4	2	88	11	107	9	92	13
2008	517	41	1	-	6	2	93	10	121	9	94	13
2009	525	40	1	-	4	2	93	9	125	8	93	13
2010	523	37	-	-	4	-	88	2	112	6	98	17
2011	563	37	-	-	13	-	108	2	122	5	96	15
2012	551	28	-	-	13	-	108	2	122	5	98	8
2013	577	25	-	-	13	-	115	4	125	4	106	9
2014	681	21	-	-	13	-	198	2	154	5	104	6
2015	639	19	-	-	6	-	179	1	133	5	99	7
管理小組	5	2	-	-	-	-	-	-	-	1	-	-
民營事業	34	7	-	-	-	-	-	-	-	2	3	2
港灣作業機構	130	2	-	-	-	-	5	-	11	-	19	2
棧埠作業機構	470	8	-	-	6	-	174	1	122	2	77	3

資料來源：葵寮工業區專用港管理股份有限公司

**Table 25. Number of Staff by Age**

Unit : Person

40 - 44 歲		45 - 49 歲		50 - 54 歲		55 - 59 歲		60 - 64 歲		65 歲以上	
Age		Age		Age		Age		Age		Age Over	
男	女	男	女	男	女	男	女	男	女	男	女
Male	Female	Male	Female	Male	Female	Male	Female	Male	Female	Male	Female
28	-	18	-	14	-	-	-	1	-	-	-
23	-	21	-	19	-	1	-	2	-	-	-
23	-	23	-	18	-	3	-	1	-	-	-
65	5	48	-	40	-	10	1	6	-	-	-
68	6	48	-	46	-	13	1	7	-	-	-
67	5	54	2	42	-	19	1	13	-	-	-
76	6	53	2	40	-	21	1	17	1	2	1
79	6	49	1	39	-	18	-	17	-	-	-
76	7	49	-	40	-	29	-	15	1	-	-
80	7	56	5	43	-	25	-	16	-	1	-
93	9	53	5	40	1	22	-	15	-	1	-
93	7	55	5	32	1	19	-	7	-	4	-
86	5	63	3	28	-	18	-	20	-	3	-
91	5	56	3	24	-	18	-	18	-	5	-
88	5	64	1	31	-	14	-	21	-	4	-
3	1	-	-	2	-	-	-	-	-	-	-
15	3	8	-	4	-	2	-	1	-	1	-
18	-	25	-	17	-	12	-	20	-	3	-
52	1	31	1	8	-	-	-	-	-	-	-

六、港埠設施  
附表二十六 機具、車、船（依組織別）

噸量單位：公噸  
總噸位單位：噸

年(底)別  End of Year	機									
	貨櫃起重機		跨載機		側跨機		貨櫃裝車機		貨櫃牽引機	
	Container Crane		Straddle Carrier		Lateral Straddle		Container Transfer Unit		Yard Tractor	
	台	噸量	台	噸量	台	噸量	台	噸量	台	噸量
	S.	Tonnage	S.	Tonnage	S.	Tonnage	S.	Tonnage	S.	Tonnage
2001	1	50	-	-	-	-	-	-	-	-
2002	1	50	-	-	-	-	-	-	-	-
2003	2	100	-	-	-	-	-	-	-	-
2004	2	100	-	-	-	-	-	-	-	-
2005	2	100	-	-	-	-	-	-	-	-
2006	2	100	-	-	-	-	-	-	-	-
2007	2	50	-	-	-	-	-	-	-	-
2008	2	50	-	-	-	-	-	-	-	-
2009	2	50	-	-	-	-	-	-	-	-
2010	2	50	-	-	-	-	-	-	-	-
2011	2	50	-	-	-	-	-	-	-	-
2012	2	50	-	-	-	-	-	-	-	-
2013	2	50	-	-	-	-	-	-	-	-
2014	2	50	-	-	-	-	-	-	-	-
2015	2	50	-	-	-	-	-	-	-	-
管理小組	-	-	-	-	-	-	-	-	-	-
民營事業	-	-	-	-	-	-	-	-	-	-
港灣作業機構	-	-	-	-	-	-	-	-	-	-
棧埠作業機構	2	50	-	-	-	-	-	-	-	-

六、 Harbor Facilities

Table 26. Mechanical, Vehicular & Marine Equipment

Tonnage Unit : M.T.  
Gross Tonnage : Ton.

具 Mechanical Equipment											
貨櫃吊運機 Container Transtainer		貨櫃車架 Container Chassis		貨櫃側載機 Container Side Loader		空櫃推高機 Empty C. Fork Lift		起重機 Mobile Crane		推高機 Fork - Lift Truck	
台	噸量	台	噸量	台	噸量	台	噸量	台	噸量	台	噸量
S.	Tonnage	S.	Tonnage	S.	Tonnage	S.	Tonnage	S.	Tonnage	S.	Tonnage
2	40	-	-	-	-	1	8	-	-	1	2.5
2	40	-	-	-	-	1	8	1	40	1	2.5
4	80	-	-	-	-	2	16	1	40	1	2.5
4	80	-	-	-	-	2	16	1	40	6	38
4	80	-	-	-	-	2	16	1	40	14	39
4	80	-	-	-	-	2	16	1	40	14	39
4	80	-	-	-	-	2	16	3	46	15	20
4	80	-	-	-	-	2	16	3	46	15	20
4	80	-	-	-	-	2	16	1	40	15	20
4	80	-	-	-	-	2	16	1	40	14	15
4	80	-	-	-	-	2	16	1	40	14	15
4	80	-	-	-	-	2	16	1	40	14	15
4	80	-	-	-	-	2	16	1	40	14	15
4	80	-	-	-	-	-	-	-	-	14	15
-	-	-	-	-	-	-	-	-	-	-	-
-	-	-	-	-	-	-	-	-	-	-	-
-	-	-	-	-	-	-	-	-	-	-	-
4	80	-	-	-	-	-	-	-	-	14	15

附表二十六 機具、車、船（依組織別）（續完）

噸量單位：公噸  
總噸位單位：噸

年(底)別 End of Year	車 輛 Vehicular Equipment									
	拖 車		拖 板		卡車、工程車、 清掃車		挖 泥 船		受 泥 船	
	Towing Tractor		Full Trailer		Truck		Dredger		Mud Boat	
	台 S.	噸量 Tonnage	台 S.	噸量 Tonnage	台 S.	噸量 Tonnage	艘 V.	總噸位 Tonnage	艘 V.	總噸位 Tonnage
2001	-	-	-	-	8	-	-	-	-	-
2002	-	-	-	-	8	-	-	-	-	-
2003	-	-	-	-	14	10	-	-	-	-
2004	13	39	10	35	20	7	-	-	-	-
2005	16	39	10	35	37	22	-	-	-	-
2006	16	39	10	35	29	33	4	5	-	-
2007	16	35	10	35	33	13	4	5	-	-
2008	16	35	10	35	31	11	4	5	-	-
2009	16	35	10	35	34	22	1	1,809	-	-
2010	16	35	10	35	32	15	1	1,809	-	-
2011	16	35	10	35	31	11	1	1,809	-	-
2012	16	35	10	35	31	11	1	1,809	-	-
2013	16	35	10	35	32	13	1	1,809	-	-
2014	16	35	10	35	38	29	-	-	-	-
2015	16	35	10	35	38	29	-	-	-	-
管理小組	-	-	-	-	-	-	-	-	-	-
民營事業	-	-	-	-	-	-	-	-	-	-
港灣作業機構	-	-	-	-	9	25	-	-	-	-
棧埠作業機構	16	35	10	35	29	4	-	-	-	-

資料來源：麥寮工業區專用港管理股份有限公司。

**Table 26. Mechanical, Vehicular & Marine Equipment**

Tonnage Unit : M.T.  
Gross Tonnage : Ton.

工 作 船 Marine Equipment											
拖 船		給 水 車		起 重 車		駁 船		交 通 船		什 用 船	
Tug Boat		Water Boat		Tug Boat		Brage		Traffic Boat		Miscellaneous Boat	
艘	總噸位	艘	總噸位	艘	總噸位	艘	總噸位	艘	總噸位	艘	總噸位
V.	Tonnage	V.	Tonnage	V.	Tonnage	V.	Tonnage	V.	Tonnage	V.	Tonnage
7	2,055	-	-	-	-	-	-	1	42	1	17
7	2,055	-	-	-	-	-	-	1	42	1	17
7	2,055	-	-	-	-	-	-	3	112	2	34
7	2,055	-	-	-	-	-	-	4	158	3	106
7	2,055	-	-	-	-	-	-	4	161	4	111
7	2,055	-	-	-	-	-	-	4	161	4	111
7	2,055	-	-	-	-	-	-	4	161	4	111
7	2,055	-	-	-	-	-	-	4	161	4	111
11	3,007	-	-	-	-	-	-	4	159	4	174
11	3,007	-	-	-	-	-	-	4	192	4	174
11	3,007	-	-	-	-	-	-	4	192	4	174
11	3,007	-	-	-	-	-	-	4	192	4	174
11	3,007	-	-	-	-	-	-	4	192	4	160
11	3,007	-	-	-	-	-	-	4	192	3	82
11	3,007	-	-	-	-	-	-	4	192	3	81
-	-	-	-	-	-	-	-	-	-	-	-
11	3,007	-	-	-	-	-	-	1	42	1	78
-	-	-	-	-	-	-	-	3	150	2	3
-	-	-	-	-	-	-	-	-	-	-	-

## 附表二十七 港埠工程

總長度單位：公尺  
有效容量單位：公噸  
繫泊能力單位：總噸  
堆儲量單位：公噸

年 (底) 別 End of Year	專 用 碼 頭 Wharves		倉 棧 Warehouse and Sheds		浮 筒 Bouys	
	座 Set	總長度 T.L.	座 Set	總長度 T.L.	座 Set	總長度 T.L.
2001	17	4,666	-	-	-	-
2002	17	4,666	-	-	-	-
2003	17	4,666	-	-	-	-
2004	17	4,666	-	-	-	-
2005	17	4,666	-	-	-	-
2006	17	4,666	-	-	-	-
2007	19	5,326	-	-	-	-
2008	19	5,326	-	-	-	-
2009	19	5,326	-	-	-	-
2010	20	5,701	-	-	-	-
2011	20	5,701	-	-	-	-
2012	20	5,701	-	-	-	-
2013	20	5,701	-	-	-	-
2014	20	5,701	-	-	-	-
2015	20	5,701	-	-	-	-

資料來源：麥寮工業區專用港管理股份有限公司



**Table 27. Harbor Construction**

Total Length : M.  
 Storage Capacity : M.T.  
 Berthing Capacity : G.T.  
 Warehouse Unit : MT

堆貨場		過港隧道		公用碼頭	
Open Storage Yards		Cross Harbor Tunnel		Public Wharves	
座	總長度	座	總長度	座	總長度
Set	T.L.	Set	T.L.	Set	T.L.
-	-	-	-	-	-
-	-	-	-	-	-
-	-	-	-	-	-
1	81,600	-	-	-	-
2	98,100	-	-	-	-
2	98,100	-	-	-	-
2	98,100	-	-	-	-
2	98,100	-	-	-	-
2	98,100	-	-	-	-
2	98,100	-	-	-	-
2	98,100	-	-	-	-
2	98,100	-	-	-	-
2	98,100	-	-	-	-
2	98,100	-	-	-	-
2	98,100	-	-	-	-
2	98,100	-	-	-	-



主管機關

經濟部工業局

台北市信義路三段 41-3 號

電話：(02)27541255 傳真：(02)27043757



管理單位

經濟部工業局麥寮工業專用港管理小組

雲林縣麥寮鄉中興村工業路 1535 號

電話：(05)6812533 傳真：(05)6812534



經營單位

麥寮工業區專用港管理股份有限公司

雲林縣麥寮鄉中興村台塑工業園區一號之一

電話：(05)6812766 傳真：(05)6812135