

麥寮工業專用港

統計要覽

STATISTICAL ABSTRACT OF MAILIAO HARBOR 2013

經濟部工業局編印

Complied By

Industrial Development Bureau
Ministry of Economic Affairs
Taiwan, Republic of China

中華民國一百零三年

目 錄

Contents

	頁次 (page)
第一篇 基本概況 Basic Overview.....	1
第二篇 提要分析 Summary Analysis.....	3
第三篇 統計表 Statistics Tables	
一、港務 Harbor Management	
(一) 船舶 Vessels	
附表 1 進出港輪船地區	22
Incoming and Outgoing Vessels by Area	
附表 2 進港輪船國籍	24
Number of Incoming Vessels by Registered Nationality	
附表 3 進港輪船種類	26
Number of Incoming Vessels by Kind	
附表 4 進港輪船航次	28
Number of Incoming Vessels by Line of Navigation	
附表 5 出港輪船航次	30
Number of Outgoing Vessels by Line of Navigation	
附表 6 進港輪船噸級與在港停泊時間	32
Number of Incoming Vessels by Gross Tonnage and Time of Vessels Mooring in Port	
(二) 貨物 Cargoes	
附表 7 進出港貨物國輪外輪承運量	34
Tonnage of Imports & Exports Carried by Domestic and Foreign Vessels	
附表 8 進港貨物(地區別)	36
Tonnage of Imports (by Region)	

目 錄

Contents

	頁次 (page)
附表 9 出港貨物(地區別)	38
Tonnage of Exports (by Region)	
附表 10 進港貨物分類(按月)	40
Classification of Imports (by Month)	
附表 11 進港貨物分類(按碼頭)	44
Classification of Imports (by Wharf)	
附表 12 出港貨物分類(按月)	48
Classification of Exports (by Month)	
附表 13 出港貨物分類(按碼頭)	52
Classification of Exports (by Wharf)	
二、棧埠 Stevedoring & Warehousing	
附表 14 本港裝卸業者營運實績(依公司別).....	54
Volume of Cargoes Handled by Stevedoring & Warehousing Companies	
附表 15 裝卸貨物噸量	56
Volume of Cargoes Handled	
附表 16 裝卸貨物效率	58
Efficiency of Cargoes Handled	
附表 17 貨櫃裝卸量	60
Number of Containers Handled	
附表 18 倉儲業務概況	64
Volume of Warehousing	
三、航政監理 Supervising and Administering of navigation	
附表 19 工業專用港區域海事案件 Ship-Wreck...	66

目 錄

Contents

頁次 (page)

四、財務 Finance	
附表 20 營業總收入 Total Operating Revenue...	68
附表 21 營業總支出 Total Operating Expense...	70
五、組織及人事 Organization and Personnel matters	
附表 22 港內各作業組織系統表	72
Organization Chart	
附表 23 港內作業人數(依組織別)	74
Number of Staff & Workmen of the Bureau and Branch Offices	
附表 24 港內作業人員學歷(依組織別)	76
Number of Staff by Education	
附表 25 港內作業人員年齡(依組織別)	78
Number of Staff by Age	
六、港埠設施 Harbor Facilities	
附表 26 機具、車、船(依組織別)	80
Mechanical, Vehicular & Marine Equipment	
附表 27 港埠工程	84
Harbor Construction	

第一篇 基本概況

一、港埠基本資料

經濟部為因應我國基礎工業之發展，配合六輕及六輕擴大投資計畫用地需求，以提供國內既有及未來石化產業建廠及遷廠需要，乃規劃於雲林縣外海以抽砂填海造地方式開發雲林離島式基礎工業區，共分有麥寮區、新興區、台西區及四湖區，其中麥寮區之六輕計畫石化工業區係由台塑企業自行進行抽砂填海造地，而麥寮工業專用港（以下簡稱麥寮港）內之專用碼頭，則全為配合六輕計畫所興建；未來配合開發進度，將再進行十座公用碼頭之興建並提供該工業區內廠商使用。

麥寮港為我國由民營事業投資興建及經營管理港口之首例，其港埠經營完全由台塑企業成立之麥寮工業區專用港管理股份有限公司（以下簡稱港口公司）負責，經濟部工業局於 89 年 10 月 1 日現地派駐成立麥寮工業專用港管理小組（以下簡稱管理小組），以最精簡人力有效扮演監督，執行具有公權力之港務行政管理及協調航政、海關、港警、檢疫及安檢等其他相關公務機關，順利於 90 年 2 月 22 日邀集交通部、財政部、內政部、國防部、海巡署、環保署、農委會及雲林縣政府等各機關現地履勘合格後，已於 90 年 3 月 1 日起開始正式營運。

麥寮港位於東經 120 度 08.9 分、北緯 23 度 46.9 分。北起濁水溪口南側，南臨新虎尾溪口，澎湖水道東側海岸。北距台中港約 40 哩，南離高雄港約 80 哩。港口方向朝西偏南 34°（約介於西南西與西南間），航道於中潮位水深 24 公尺，可供 30 萬噸級船舶進出，為台灣最深之港口。

二、港灣及碼頭

(一)港灣設施

- (1)防波堤：西防波堤長 3,243 公尺，南防波堤長 2,227 公尺。
- (2)迴船池：直徑 900 公尺。
- (3)港外水域：劃設領港登輪區、外航道及到港船舶錨泊區。
- (4)導航設施：進港疊標、堤頭燈塔及航道浮燈標等，用以引導及協助船舶之安全航行。
- (5)信號台設施：船舶交通管理系統(VTS)、海氣象設施及 DSB 通信設備等，用以管制船舶航行與進出港。
- (6)港勤船渠：供港勤船舶靠泊、加油及加水等使用。
- (7)港務港勤大樓：提供政府單位、港區作業單位、港口公司及信號台辦公或作業所需。
- (8)機工場及滑道：供港勤船舶維修、檢驗及保養所需。

(二)碼頭設施

營運中 20 座專用碼頭分別由台塑石化公司及麥寮汽電公司自行投資興建及維護管理，而公用碼頭將配合未來需求，由港口公司投資興建及經營管理。

三、設備概況

(一)港勤船舶

由港口公司購置拖船 11 艘、交通船 1 艘及什用船 1 艘，用以協助船舶進出港口及靠泊碼頭所需。

(二)裝卸設備

各碼頭依裝卸需求由裝卸作業單位購置裝卸機具，諸如卸料臂、卸煤機、貨櫃起重機、貨櫃吊運機及空櫃堆高機等，以提供裝卸服務。

第二篇 提要分析

一、營運實績

(一) 進出港船舶

(1) 進港船舶：102年1月至12月進港船舶合計2,891艘次，5,939萬7,052總噸位，較101年增加454艘次，增加率為18.63%，總噸位則增加725萬3,818總噸位，增加率為13.91%，若與90年比較，則增加1,520艘次及增加3,747萬6,349總噸位，增加率分別為110.87%與170.96%。

(2) 出港船舶：102年1月至12月出港船舶合計2,893艘次，5,952萬2,852總噸位，較101年增加453艘次，增加率為18.57%，總噸位則增加764萬9,761總噸位，增加率為14.75%，若與90年比較，則增加1,519艘次及增加3,755萬9,686總噸位，增加率分別為110.55%與171.01%。

(二) 貨物吞吐量：102年全年進港貨物為4,892萬4,298公噸、出港貨物為2,150萬2,603公噸，吞吐量為7,042萬6,901公噸，較上年增加571萬9,114公噸，增加率為8.84%。若與90年比較，則增加4,410萬6,855公噸，增加率為167.58%

(三) 貨物裝卸量：102年1月至12月全港裝卸量合計為7,029萬3,571公噸，較上年增加570萬2,929公噸，增加率為8.83%。若與90年比較，則增加4,425萬2,143公噸，增加率為169.93%；另102年區內貨主以台塑石化公司5,509萬7,906公噸為最多，占78.38%，其次為麥寮汽電公司478萬5,828公噸，占6.81%，再次為台塑公司385

萬 6,530 公噸，占 5.49%。

(四)謹刊列臺灣地區各港口 102 年營運量比較表（如表 1），以供參考。

二、港務統計資料

102 年度進出港船舶及貨物，依各類統計條件說明如次：

(一)船舶

- (1)進港船舶國籍：以香港 518 艘次為最多，其次為巴拿馬 408 艘次，再次為賴比瑞亞 244 艘次。
- (2)進港船舶種類：以油輪 942 艘次為最多，其次為化學輪 885 艘次，再次為液化輪 295 艘次。與 101 年進港船舶比較，增減率分別為 18.49%、-0.78%及 18.95%。
- (3)進港輪船航次：以國內而言，來自於高雄港 57 艘次為最多。以國外而言，則以香港 355 艘次為最多，其次為南韓 242 艘次，再次為菲律賓 201 艘次。
- (4)出港輪船航次：以國內而言，前往高雄 67 艘次為最多。以國外而言，則以新加坡 400 艘次為最多，其次為香港 274 艘次，再次為菲律賓 222 艘次。
- (5)進港船舶噸級：進港船舶每艘平均 2 萬 546 總噸，較上年度減少 850 總噸，其中有 877 艘次船舶總噸位介於 1,000~4,999 總噸位為最多，其次船舶總噸位介於 5,000~9,999 總噸位為 751 艘次，再次船舶總噸位介於 20,000~39,999 總噸位為 411 艘次。
- (6)在港停泊時間：出港船舶每艘平均停泊 34.19 小時，較上年度減少 1.35 小時，其中有 1,202 艘次以船舶停泊 25~48 小時為最多，其次為 24 小時以內者 1,199 艘次，再次為 49~72 小時者 274 艘次。

(二)貨物

- (1)船舶承運量：國輪承運 135 萬 1,518 公噸，占全部 1.92%，較上年度增加 59 萬 6,151 公噸，成長 78.92%。外輪承運 6,907

萬 5,383 公噸，占全部 98.08%，較上年度增加 512 萬 2,963 公噸，成長 8.01%。

(2)貨物來源地：以沙烏地阿拉伯 953 萬 2,587 公噸為最多，占 19.48%，其次為科威特 795 萬 3,234 公噸，占 16.26%，再次為澳洲 581 萬 1,218 公噸，占 11.88%。

(3)貨物運達地：以中國大陸 625 萬 2,613 噸為最多，占 29.08%，其次為菲律賓 380 萬 7,887 公噸，占 17.71%，再次為新加坡 276 萬 6,824 公噸，占 12.87%。

(4)進港貨物類別：以非金屬礦物製品 3,116 萬 6,326 公噸為最多，占 63.70%，其次為礦產品 1,595 萬 5,998 公噸，占 32.61%，再次為化學品 178 萬 9,997 公噸，占 3.66%。

(5)出港貨物類別：以非金屬礦物製品 1,321 萬 1,298 公噸為最多，占 61.44%，其次為化學品 733 萬 7,130 公噸，占 34.12%，再次為其他什貨 63 萬 2,137 公噸，占 2.94%。

(6)進港貨物卸貨碼頭：以西三碼頭 1,652 萬 7,523 公噸為最多，占 33.78%，其次為西二碼頭 1,098 萬 1,266 公噸，占 22.45%，再次為東三碼頭 620 萬 6,834 公噸，占 12.69%。

(7)出港貨物裝貨碼頭：以東七碼頭 382 萬 4,098 公噸為最多，占 17.78%，其次為西一碼頭 342 萬 5,792 公噸，占 15.93%，再次為東八碼頭 313 萬 5,269 噸，占 14.58%。

三、棧埠統計資料

102 年度棧埠裝卸情形，依各類統計條件說明如次：

(1)貨主：以台塑石化公司 5,509 萬 7,906 公噸為最多，占 78.38%，其次

為麥寮汽電公司 478 萬 5,828 公噸，占 6.81%。

(2)裝卸貨物：裝貨部份以管道貨 1,960 萬 9,639 公噸為最多，占裝貨量 93.03%。卸貨部份以管道貨 3,316 萬 3,405 公噸為最多，占 67.38%，其次為燃煤 1,410 萬 4,186 公噸，占 28.66%。

(3)裝卸效率：平均每小時裝貨量 330 公噸，較上年度增加 3.77%。平均每小時卸貨量 684 公噸，較上年度減少 1.44%。

(4)貨櫃：裝卸貨櫃個數折合 20 呎共 7 萬 250 TEU，較上年度增加 3 萬 7,476 TEU，成長 114.35%。其中進口貨櫃 3 萬 4,704 TEU，較上年度增加 1 萬 8,247 TEU，成長 110.88%；出口貨櫃 3 萬 5,546 TEU，較上年度增加 1 萬 9,229 TEU，成長 117.85%。

四、航政統計資料

102 年麥寮港海事案件計 1 件，較上年增加 1 件。

五、財務統計資料

港口公司及裝卸單位 102 年營業收入總計 48.01 億元，較上年增加 6.91 億元，成長 16.82%。營業支出 27.30 億元，較上年減少 1.85 億元，負成長 6.34%。

六、組織及人事統計資料

(1)管理小組：執行具有公權力之港務行政管理及協調航政、海關、港警、檢疫及安檢等其他相關公務機關，合計 8 人（含主任），較上年度增加 1 人。

(2)港口公司：負責麥寮港之經營與管理，設有管理組、航管組、港安組及工程組，由航管組、港安組及工程組負責現地港務業務，合計 40 人，較上年度減少 1 人。

(3)港灣作業機構：麥寮港之拖船操作業務係由港口公司委託台塑海運公司執行，另引水人接送、帶解纜、船舶垃圾清理及港

區海面垃圾清理等業務由外包廠商負責辦理，合計 144 人，較上年度增加 31 人。

(4) 棧埠作業機構：由區內興辦工業人委託台塑石化公司碼槽處執行專用碼頭之裝卸作業，另攔油索帶解、加油及加水等作業由外包廠商負責辦理，合計 410 人，較上年度減少 8 人。

七、港埠設施統計資料

(1) 港棧設施：20 座專用碼頭及 2 處貨櫃堆置場。

(2) 船舶：拖船 11 艘、交通船 4 艘及什用船 4 艘等 19 艘港勤船舶，與上年度相同。

(3) 機具：貨櫃起重機、貨櫃吊運機、空櫃堆高機、起重機及堆高機等 23 台機具，與上年度相同。

(4) 車輛：拖車、拖板車及工程車等 58 輛，較上年度增加 1 輛。

表 1 102 年度台灣地區各港口營運量比較

港口別	進港船舶				吞吐量		貨物裝卸量	
	艘次	%	總噸位	%	公噸	%	計費噸	%
總計	41,003	100.00	752,603,252	100	323,079,731	100	785,234,301	100
麥寮港	2,891	7.05	59,397,052	7.89	70,426,901	21.80	70,293,571	8.95
和平港	319	0.78	6,588,280	0.88	9,186,724	2.84	9,186,724	1.17
高雄港	17,646	43.04	384,913,060	51.14	115,034,300	35.61	441,452,925	56.22
基隆港	6,205	15.13	96,762,659	12.86	21,436,119	6.63	69,380,599	8.84
台中港	7,894	19.25	119,797,015	15.92	70,084,123	21.69	120,508,807	15.35
花蓮港	1,357	3.31	13,546,469	1.80	13,068,789	4.05	13,055,528	1.66
蘇澳港	557	1.36	6,518,348	0.87	4,927,691	1.53	5,209,953	0.66
安平港	389	0.95	3,059,028	0.41	1,401,019	0.43	1,434,120	0.18
台北港	3,745	9.13	62,021,341	8.24	17,514,065	5.42	54,712,074	6.97

商港資料來源：高雄港統計年報

Chapter I. Basic Overview

1. Basic Harbor Information

In response to basic domestic development, to co-op with the land necessity of the Six Naphtha Cracking Complex Project and its expansion, and to domestically provide existing and future necessities for the construction and relocation of petrochemical business. The Ministry of Economic Affairs has planned to develop the Yunlin offshore Primary Industry Zone by dredging sea sand for landfill to create offshore lands. The lands created include Mailiao, Hsin Hsing, Tai Hsi, and Ssu Hu. Mailiao area is the petrochemical zone under the Sixth Naphtha Cracking Complex Project which was proceeded by the Conglomerates of Formosa Plastic by dredging sea sand for landfill. The special purpose wharves inside the industrial harbor of Mailiao (hereinafter referred to as Mailiao Harbor) were all constructed to cooperate with the Sixth Naphtha Cracking Complex Project. In the future, to go with the construction progress, there will be ten public wharves to be constructed to support for businesses in those zones.

Mailiao Harbor was the first domestic private enterprise constructed, operated and managed harbor. The harbor operation is run by the Mailiao Harbor Administration Corporation (hereinafter referred to as Mailiao Harbor Corporation) established by Formosa Plastics Groups. The Industrial Development Bureau of the Ministry of Economic Affairs constructed the management groups for Mailiao exclusive industrial harbor (hereinafter referred to as Administration groups) on Oct. 1, 2000, and used the most streamlined manpower to supervise and implement harbor administrative management, and coordinate the navigation & shipping supervision, customs, harbor police, quarantine, security inspection and

other relevant government authorities. After an inspection approval was carried out by the Ministry of Transportation and Communications, the Ministry of Finance, the Ministry of the Interior, the Ministry of National Defense, the Department of Coast Guard, the Department of Environment Protection, the Committee of Agriculture Affairs and the Government of Yunlin County on Feb. 22, 2001; it started its official operation on Mar. 1, 2001.

Mai Liao Harbor is located at longitude 120°08.9' E, latitude 23°46.9'. It is bordered to the north by Chuoshui Stream and to the south by Hsinhuwei Stream. The harbor lies 40 nautical miles south of Taichung and 80 nautical miles north of Kaohsiung. The harbor direction faces west with an inclination of 34 degrees to the south. The shipping channel is 24 meters deep at mean tide and can accommodate 300,000 DWT class VLCC, making it Taiwan's deepest harbor.

2. Harbor and Wharf

A. Harbor Facilities

- (1) Breakwater: The west breakwater is 3,243 meters long, and the south breakwater is 2,227 meters long.
- (2) Turning basin: 900 meters in diameter.
- (3) Outer waters: The outer waters are divided into a Pilot Station, outer navigation channel and anchorage.
- (4) Aids to navigation: Include ranges, breakwater lighthouses and navigational channel buoys to assist in guiding ships into and out of the harbor.
- (5) Signal station: Include VTS (vessel traffic services), climate & sea conditions facilities and DSB communication equipment.

- (6) Harbor craft basin: For the wharfing and servicing (oil and water) of harbor craft.
- (7) Harbor administration building: Provides government agencies, harbor operating unit, Mailiao Harbor Corporation and signal station or operational demands.
- (8) Ship & machinery repair works and slipway: For repair, inspection and maintenance of harbor craft.

B. Wharf Facilities

The 20 operating appropriate berths respectively are constructed, operated and managed by Formosa Petrochemical Corporation and Mailiao Power Corporation, and the public berths will be constructed, operated and managed by Mailiao Harbor Corporation in accordance with future demand.

3. Equipment Overview

A. Harbor Vessels

Mailiao Harbor Corporation has purchased 11 tug boats, 1 shuttle boat and 1 miscellaneous boats to assist the incoming/outgoing vessels and docking requirements.

B. Loading/Unloading Equipment

According to the loading/unloading demands, various wharfs' loading/unloading operation unit will purchase the loading/unloading equipment, such as unloading arm, coal unloader, container cranes, container lifting machine, and empty container forklift to provide the loading/unloading services.

Chapter II. Summary Analysis

1. Operation Performance

A. Incoming/Outgoing Vessels

(1) Incoming Vessels: A total of 2,891 vessels called at Mailiao Harbor in 2013 and amounted to a gross tonnage of 59,397,052. The numbers of vessels had an increase of 454 (18.63%), and the gross tonnage increased 7,253,818 GT (13.91%), compared to the previous year. Compared to 2001, the number of the vessels had an increase of 1,520 (110.87%) and the gross tonnage increased 37,476,349 GT (170.96%).

(2) Outgoing Vessels: A total of 2,893 vessels called at Mailiao Harbor in 2013 and amounted to a gross tonnage of 59,522,852. The number of vessels had an increase of 453 (18.57%), and the gross tonnage increased 7,649,761 GT (14.75%), compared to that of the previous year. Compared to 2001, the number of vessels had an increase of 1,519 (110.55%) and the gross tonnage increased 37,559,686 GT (171.01%).

B. Cargo throughput: At Mailiao Harbor, the imports reached 48,924,298 MT in 2013, and the exports reached 21,502,603 MT. The amount of cargo throughput reached 70,426,901 MT, 5,719,114 MT (8.84%) more than that of the previous year. It had an increase of 44,106,855 MT (167.58%) over 2001.

C. Loading and Unloading: In 2013 the amount of loading and unloading reached 70,293,571 revenue tons, 5,702,929 MT (8.83%) more than that of

the previous year. Compared to 2001, the amount of loading and unloading had an increase of 44,252,143 MT (169.93%). In addition, Formosa Petrochemical Corporation was the biggest owner of cargo in 2013, 55,097,906 MT (78.38%), followed by Mailiao Power Corporation's 4,785,828 MT (6.81%), and Formosa Plastics Corporation's 3,856,530 MT (5.49%).

D. The business volume comparison table of Taiwan harbors in 2013 is listed for reference (See Table 1).

2. Harbor Statistical Information

The 2013 incoming/outgoing vessels and cargo are described in accordance with the various statistical conditions as follows:

A. Vessels

- (1) Incoming Vessels by Nationality: Most incoming vessels came from Hong Kong, 518, followed by Panama, 408 and Liberia, 244.
- (2) Incoming Vessels by Kind: There are 942 tankers, followed by 885 chemical tankers, and 295 liquid chemical tankers. In comparison with the incoming vessels by kind in 2012, the ratios respectively are 18.49%, -0.78% and 18.95%.
- (3) Incoming Vessels by Line of Navigation: Domestically, there are 57 ships from Kaohsiung Harbor. Internationally, there are 355 ships from Hong Kong, followed by 242 ships from South Korea and 201 ships from Philippine.
- (4) Outgoing Vessels by Line of Navigation: Domestically, there are 67 ships going to Kaohsiung. Internationally, there are 400 ships going to Singapore, followed by 274 ships going to Hong Kong and 222 ships going to Philippine.

- (5) Incoming Vessels by Gross Tonnage: On average, each incoming vessel has 20,546 GT, compared to 2012, the gross tonnage had a decrease of 850, of which there are 877 vessels between 1,000 GT~4,999 GT, 751 vessels between 5,000 GT~9,999 GT, and 411 vessels between 20,000 GT~39,999 GT.
- (6) Time of Vessels Mooring in port: The average number of mooring hours of the outbound vessels is 34.19 which is 1.35 hours less than in 2012, of which there are 1,202 vessels mooring for 25~48 hours, followed by 1,199 vessels mooring in 24 hours, and 274 vessels mooring for 49~72 hours.

B. Cargo

- (1) Vessels Carried Volume: The domestic vessel carried volume is 1,351,518 tons (1.92%) and 596,151 tons more than in 2012; it has a growth of 78.92%. The foreign vessels cargo volume is 69,075,383 tons (98.08%), and 5,122,963 tons more than in 2012; it has a growth of 8.01%.
- (2) Cargo Origin: Most cargo originates from Saudi Arabia. It has 9,532,587 MT (19.48%), followed by Kuwait's 7,953,234 MT (16.26%), and Australia's 5,811,218 MT (11.88%).
- (3) Cargo Destination: Most cargo is destined for Mainland China with 6,252,613 MT(29.08%), followed by Philippine's 3,807,887 MT (17.71%), and Singapore's 2,766,824 MT (12.87%).
- (4) Classification of Imports: The non-metallic mineral products are the most, 31,166,326 MT (63.70%), followed by 15,955,998 MT of mineral products (32.61%), and 1,789,997 MT of chemical products (3.66%).

(5) Classification of Exports: The non-metallic mineral products are the most, 13,211,298 MT (61.44%), followed by 7,337,130 MT of chemical products (34.12%), and 632,137 MT of general merchandise products (2.94%).

(6) Unloading Berths of Imports: Berth West-3 has the most unloading of imports, 16,527,523 MT (33.78%), followed by Berth West-2, which has 10,981,266 MT (22.45%), and Berth East-3, which has 6,206,834 MT (12.69%).

(7) Loading Berths of Exports: Berth East-7 has the most loading of exports, 3,824,098 MT (17.78%), followed by Berth West-1 which has 3,425,792 MT (15.93%), and Berth East-8, which has 3,135,269 MT (14.58%).

C. Stevedoring & Warehousing Statistical Information

The 2013 Stevedoring & Warehousing situations are described in accordance with the various statistical conditions as follows:

(1) Owner of Cargo: Formosa Petrochemical Corporation is 55,097,906 MT (78.38%) of the most, followed by Mailiao Power Corporation's 4,785,828 MT (6.81%).

(2) Cargo Handling: For cargo loading, the most is pipe line cargo, 19,609,639 MT (93.03%). For cargo unloading, the most is pipe line cargo, 33,163,405 MT (67.38%), followed by 14,104,186 MT of coal (28.66%).

(3) Cargo Handling Efficiency: The average loading volume is 330 MT per hour, which is 3.77% more than 2012. The average unloading

volume is 684 MT per hour, which is 1.44% less than 2012.

- (4) Container: Loading/unloading container amount is 70,250 TEU, which is 37,476 TEU more than in 2012, a growth of 114.35%, of which, the import container is 34,704 TEU, which is 18,247 TEU more than in 2012, a growth of 110.88%; the export container is 35,546 TEU, which is 19,229 TEU more than in 2012, a growth of 117.85%.

4. Navigation & Shipping Supervision Statistical Information

One marine accident was found in Mailiao Harbor in 2013, there is one accident more than in 2012.

5. Financial Statistical Information

The 2013 total operation revenue of Mailiao Harbor Corporation and the loading/unloading units was 4.801 billion, which is 0.691 billion more than in 2012; a growth of 16.82%. The operation expenses were 2.730 billion, which is 0.185 billion less than in 2012; a negative growth of 6.34%.

6. Organization and Personnel Statistical Information

- (1) Administration Groups: implement harbor administrative management, and coordinate the navigation & shipping supervision, customs, harbor police, quarantine, security inspection and other relevant government authorities. There is a total of 8 people (including the chief), one person more than the previous year.

- (2) Mailiao Harbor Corporation: responsible for the operation and management of Mailiao Harbor; there is a administration section, a port control section, a port security section and an engineering section set up. The on-site harbor affairs are run by the port control section, port security section and

engineering section, which has a total of 40 people, one person less than the previous year.

(3) Harbor Operators: trailer operation of Mailiao Harbor is implemented by Formosa Plastics Marine Corporation, commissioned by Mailiao Harbor Corporation, and the coast guard pick up, line handling, vessels trash cleaning and harbor sea surface trash cleaning, etc. affairs handled by the outsourced suppliers. It has a total of 144 people, 31 persons more than the previous year.

(4) Berths Operators: district industrial personnel commissioned Formosa Petrochemical Corporation implement appropriate wharf loading/unloading operations. The oil boom unmooring, oil and water servicing operations are handled by the outsourced suppliers; it has a total of 410 people, 8 people less than in 2012.

7. Harbor Facilities Statistical Information

(1) Harbor Facilities: 20 specialized wharves and 2 container piling sites.

(2) Vessels: 19 harbor vessels, including: 11 tug boats, 4 shuttle boats and 4 miscellaneous boats, the same as the previous year.

(3) Machines and Instruments: 23 machines and instruments, including: container cranes, container lifting machines, empty container liftfork, cranes and fork lift trucks, the same as the previous year.

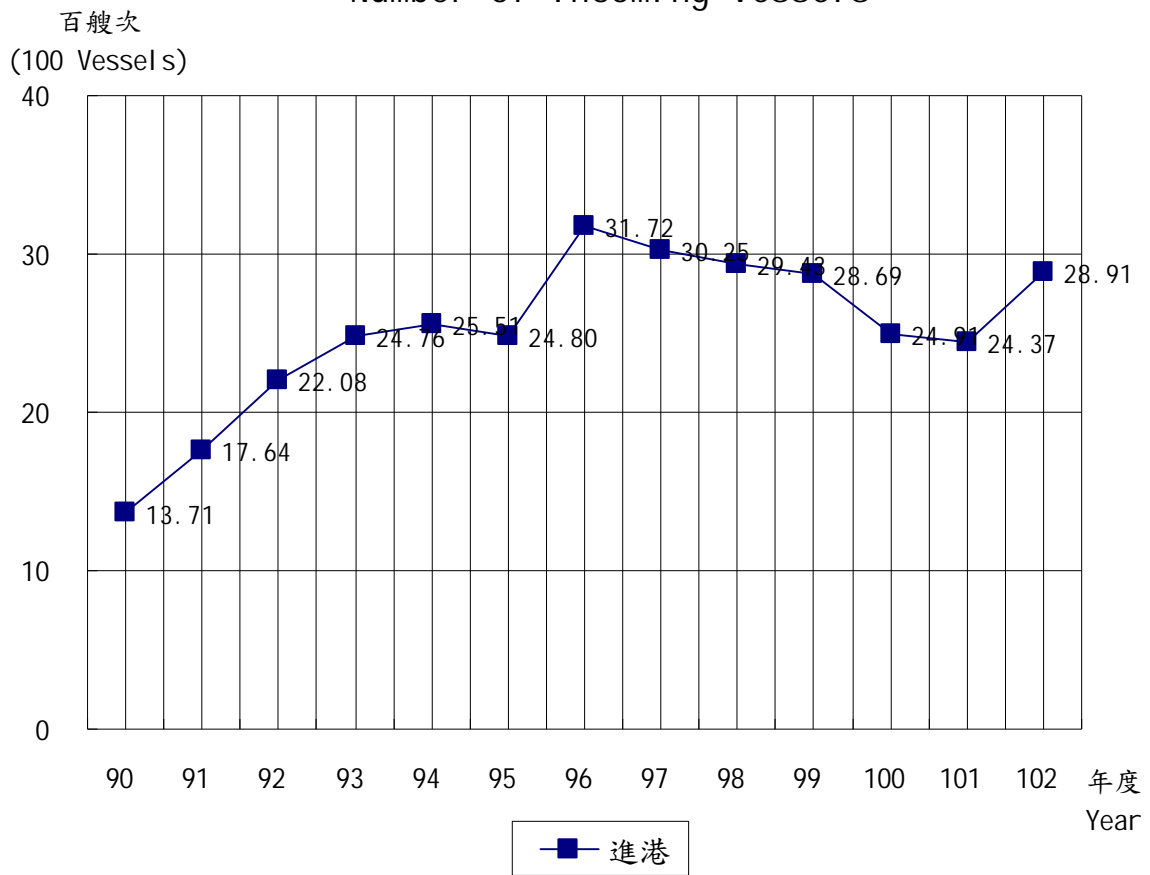
(4) Vehicles: 58 trailers and engineering vehicles, one vehicle more than the previous year.

Table 1: The business volume comparison table of Taiwan harbors in 2013

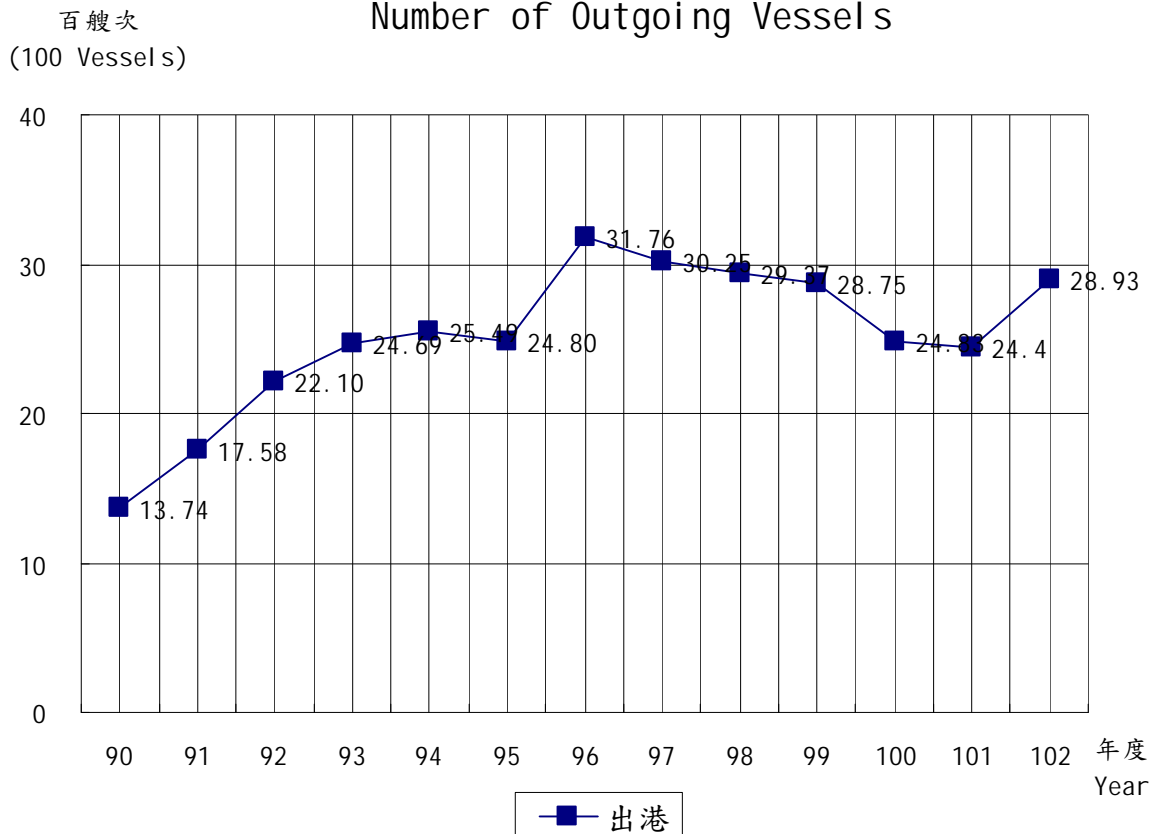
Harbor	Incoming Vessels				Cargo throughput		Cargo Tonnage Handled	
	Vessels	%	Gross Tonnage	%	Tons	%	Revenue Tons	%
Total	41,003	100.00	752,603,252	100	323,079,731	100	785,234,301	100
Mailiao	2,891	7.05	59,397,052	7.89	70,426,901	21.80	70,293,571	8.95
Heping	319	0.78	6,588,280	0.88	9,186,724	2.84	9,186,724	1.17
Kaohsiung	17,646	43.04	384,913,060	51.14	115,034,300	35.61	441,452,925	56.22
Keelung	6,205	15.13	96,762,659	12.86	21,436,119	6.63	69,380,599	8.84
Taichung	7,894	19.25	119,797,015	15.92	70,084,123	21.69	120,508,807	15.35
Hualien	1,357	3.31	13,546,469	1.80	13,068,789	4.05	13,055,528	1.66
Suao	557	1.36	6,518,348	0.87	4,927,691	1.53	5,209,953	0.66
Anping	389	0.95	3,059,028	0.41	1,401,019	0.43	1,434,120	0.18
Taipei	3,745	9.13	62,021,341	8.24	17,514,065	5.42	54,712,074	6.97

Port Information Source: Annual Statistical Report of Kaohsiung Port

進港船舶艘次 Number of Incoming Vessels



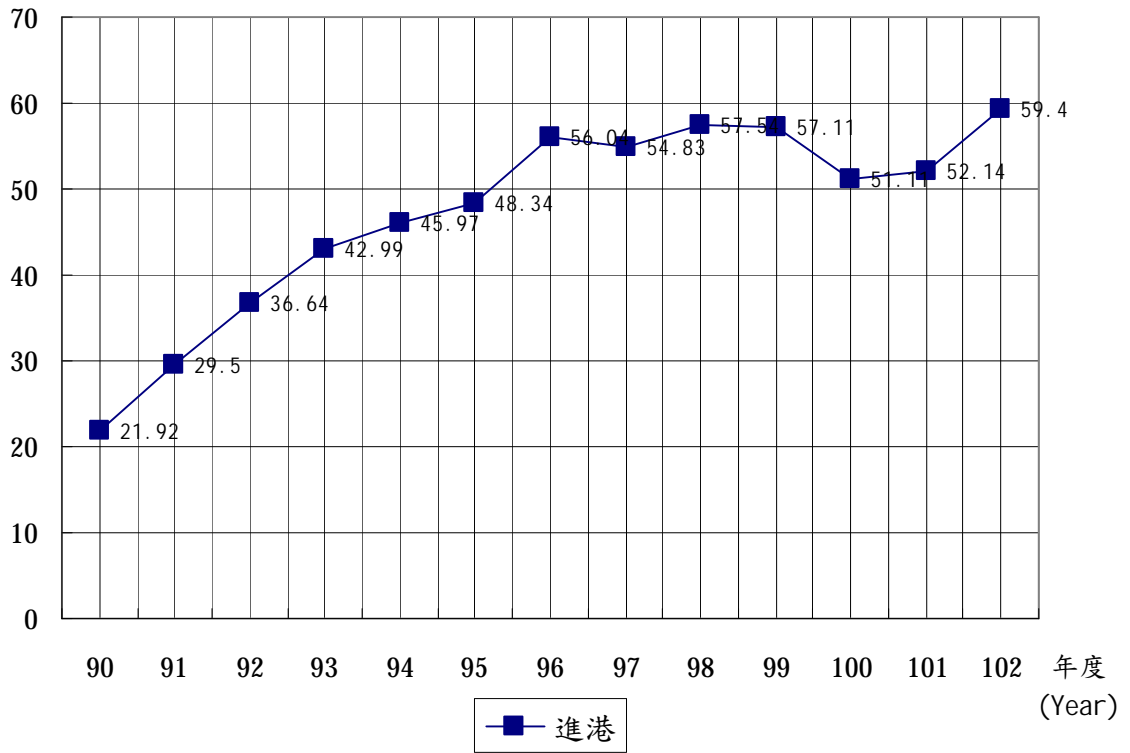
出港船舶艘次 Number of Outgoing Vessels



進港船舶總噸位

百萬總噸
(Million GTs)

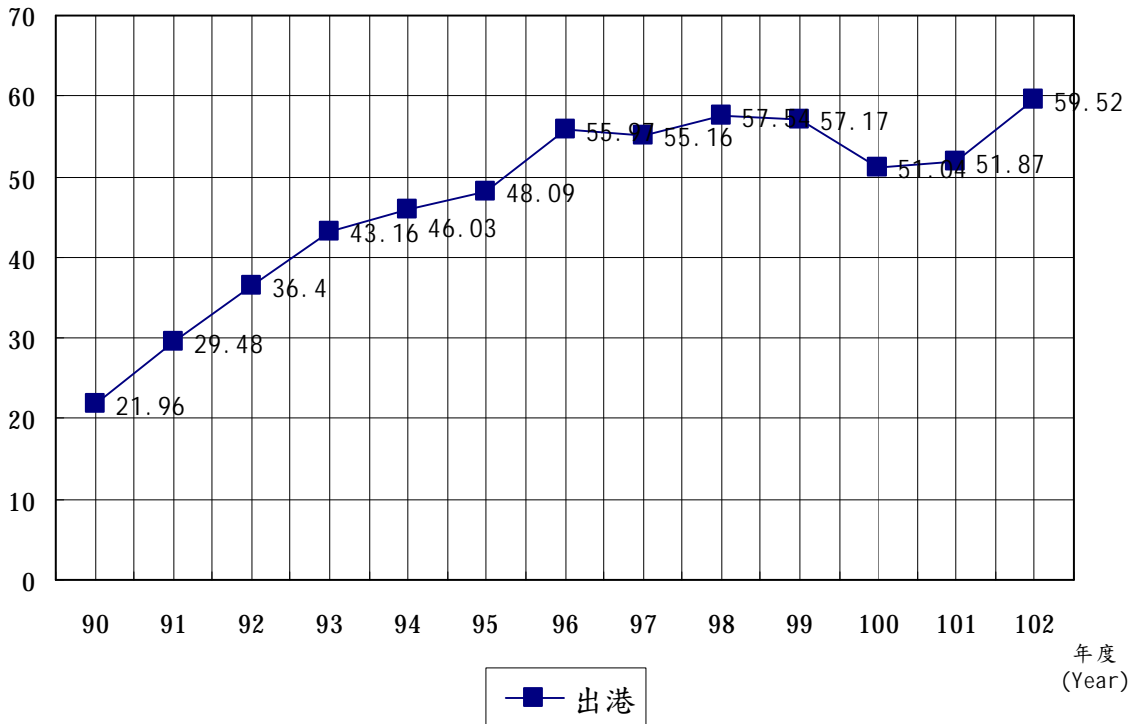
Gross Tonnage of Incoming Vessels



出港船舶總噸位

百萬總噸
(Million GTs)

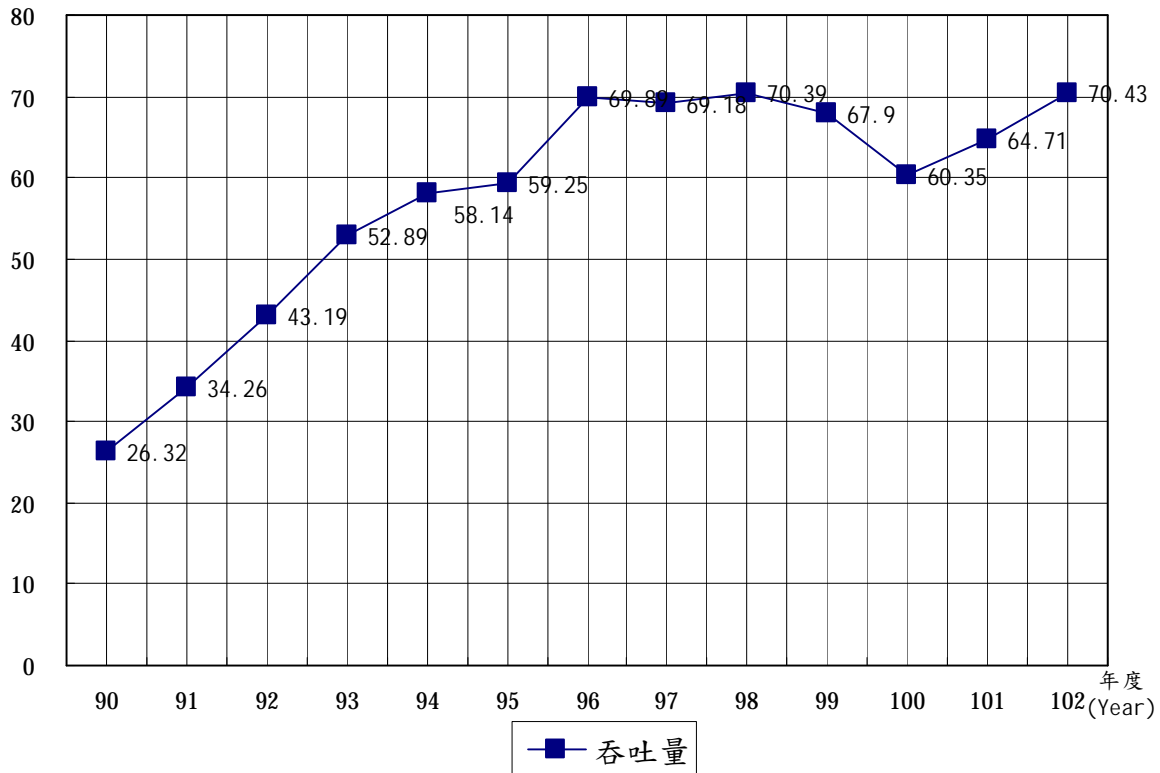
Gross Tonnage of Outgoing Vessels



貨物吞吐量

Amount of Cargoes Throughput

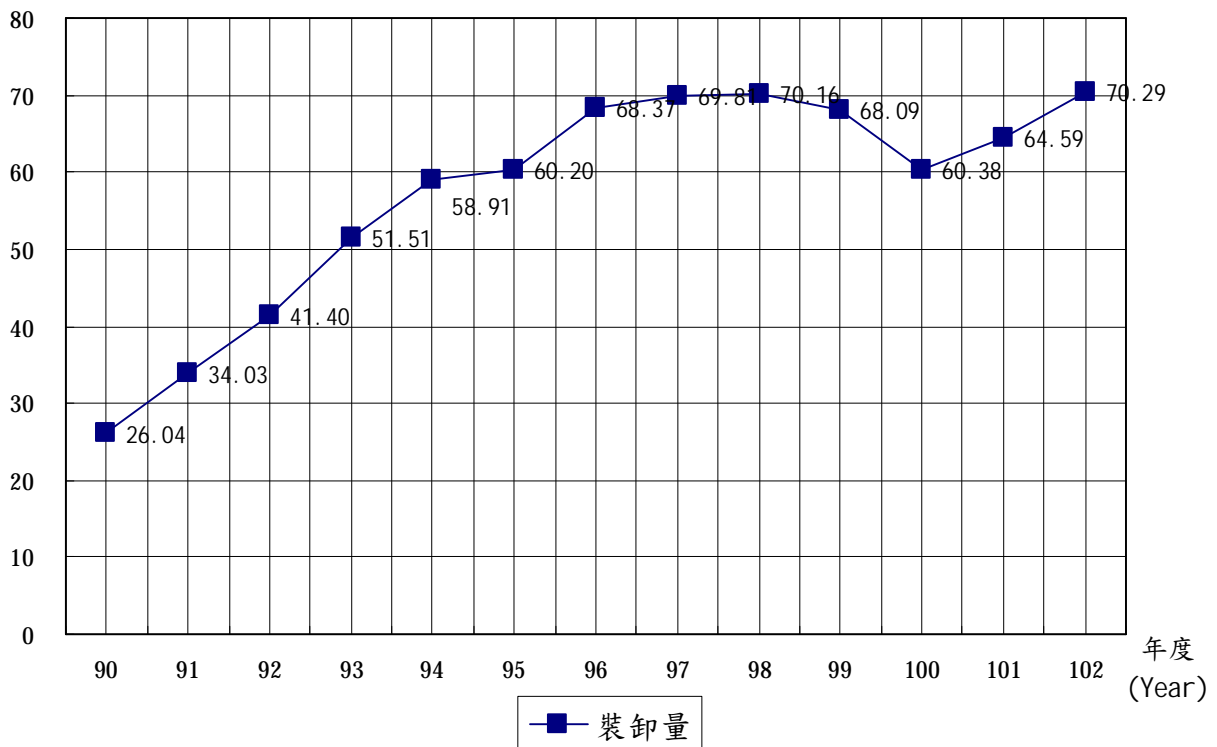
百萬公噸
(Million MT)



貨物裝卸量

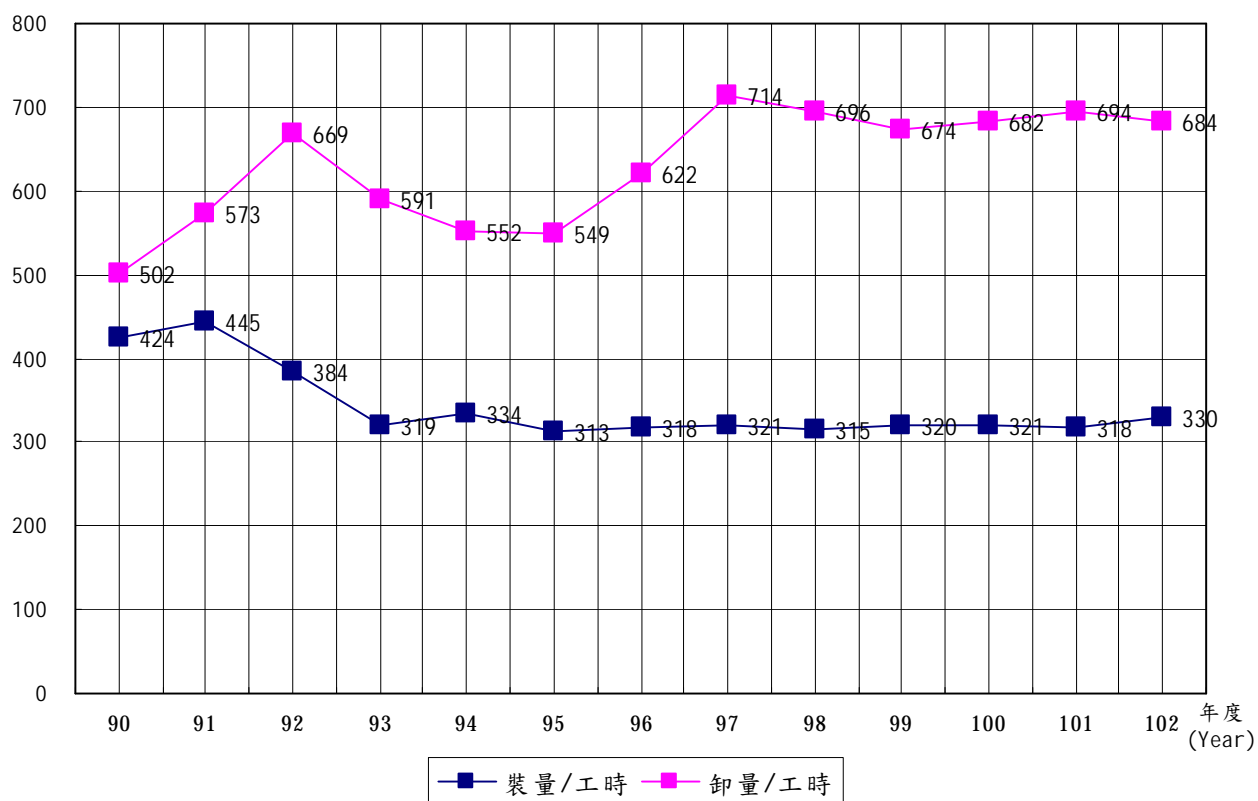
Volume of Cargoes Handled

百萬公噸
(Million MT)



量/時
(V/H)

貨物裝卸效率 Efficiency of Cargoes Handled



第三篇 統計要覽

一、港務

附表一 進出港輪船運輸量

艘次單位：次
總噸位單位：噸

年 (月) 別 Year and Month	進 港					
	總 計		國 內		國 外	
	Total		Domestic		Foreign	
	艘 次	總 噸 位	艘 次	總 噸 位	艘 次	總 噸 位
V.	G. T.	V.	G. T.	V.	G. T.	
2001	1,371	21,920,703	119	1,042,767	1,252	20,877,936
2002	1,764	29,501,874	201	1,980,906	1,563	27,520,968
2003	2,208	36,644,322	317	2,499,394	1,891	34,144,928
2004	2,476	42,992,935	473	2,439,657	2,003	40,553,278
2005	2,551	45,970,534	432	2,775,256	2,119	43,195,278
2006	2,480	48,335,727	244	2,537,218	2,236	45,798,509
2007	3,172	56,044,562	198	2,211,301	2,974	53,833,261
2008	3,025	54,825,457	99	1,089,860	2,926	53,735,597
2009	2,943	57,535,569	109	859,869	2,834	56,675,700
2010	2,869	57,105,381	138	1,280,329	2,731	55,825,052
2011	2,491	51,112,185	122	1,134,164	2,369	49,978,021
2012	2,437	52,143,234	119	1,045,506	2,318	51,097,728
2013	2,891	59,397,052	120	1,080,033	2,771	58,317,019
一 月(Jan.)	241	4,910,991	11	70,364	230	4,840,627
二 月(Feb.)	227	4,889,608	9	95,520	218	4,794,088
三 月(Mar.)	263	5,444,561	10	67,588	253	5,376,973
四 月(Apr.)	226	4,693,098	13	200,408	213	4,492,690
五 月(May)	260	4,776,415	9	82,037	251	4,694,378
六 月(June)	231	4,360,950	9	40,633	222	4,320,317
七 月(July)	235	5,070,700	15	97,392	220	4,973,308
八 月(Aug.)	241	5,022,014	8	73,475	233	4,948,539
九 月(Sep.)	230	4,836,248	9	32,270	221	4,803,978
十 月(Oct.)	231	4,994,536	12	133,863	219	4,860,673
十一月(Nov.)	248	5,045,318	6	133,548	242	4,911,770
十二月(Dec.)	258	5,352,613	9	52,935	249	5,299,678

資料來源：麥寮工業區專用港管理股份有限公司。

3rd Statistics Tables

一、Harbor Management

Table 1. Tonnage of Imports and Exports carried by Incoming and Outgoing Vessels

Unit: V., Ton						
		出		港		
總計		Outgoing				
Total		國內		國外		
		Domestic		Foreign		
艘次	總噸位	艘次	總噸位	艘次	總噸位	
V.	G. T.	V.	G. T.	V.	G. T.	
1,374	21,963,166	1,035	16,364,343	339	5,598,823	
1,758	29,480,038	1,576	26,416,968	182	3,063,070	
2,210	36,397,967	569	6,905,358	1,641	29,492,609	
2,469	43,162,045	903	11,998,188	1,566	31,163,857	
2,549	46,033,186	488	6,159,527	2,061	39,873,659	
2,480	48,094,049	234	2,318,874	2,246	45,775,175	
3,176	55,968,701	206	2,707,465	2,970	53,261,236	
3,025	55,161,194	103	1,647,650	2,922	53,513,544	
2,937	57,542,817	122	1,028,836	2,815	56,513,981	
2,875	57,165,600	136	1,351,187	2,739	55,814,413	
2,483	51,040,986	115	1,242,957	2,368	49,798,029	
2,440	51,873,091	125	1,097,510	2,315	50,775,581	
2,893	59,522,852	108	846,682	2,785	58,676,170	
243	5,179,952	11	70,369	232	5,109,583	
226	4,776,045	7	55,666	219	4,720,379	
261	5,296,997	7	56,275	254	5,240,722	
230	4,767,708	8	75,757	222	4,691,951	
256	4,771,004	9	77,892	247	4,693,112	
230	4,446,965	9	48,401	221	4,398,564	
235	4,756,378	14	82,217	221	4,674,161	
243	5,296,532	9	103,219	234	5,193,313	
233	4,595,571	8	29,276	225	4,566,295	
231	5,312,679	7	83,790	224	5,228,889	
241	4,824,563	7	74,579	234	4,749,984	
264	5,498,458	12	89,241	252	5,409,217	

附表二 進 港 輪 船 國 籍

總噸位單位：噸

年 (月) 別 Year and Month	總 計 Total		巴 拿 馬 Panama		中 華 民 國 R.O.C		香 港 Hong Kong	
	艘次 No. of Vessels	總噸位 G. T.	艘次 No. of Vessels	總噸位 G. T.	艘次 No. of Vessels	總噸位 G. T.	艘次 No. of Vessels	總噸位 G. T.
2001	1,371	21,920,703	555	9,399,523	109	1,040,744	106	1,120,430
2002	1,764	29,501,874	640	11,731,225	162	1,841,138	50	1,314,824
2003	2,208	36,644,322	763	12,058,096	298	2,687,272	117	1,703,546
2004	2,476	42,992,935	702	9,784,951	463	2,745,771	154	1,768,672
2005	2,551	45,970,534	703	10,159,490	414	2,727,265	212	3,070,868
2006	2,480	48,335,727	722	11,870,852	223	2,169,971	200	3,079,916
2007	3,172	56,044,562	1,001	15,276,041	160	1,845,671	201	5,313,733
2008	3,025	54,825,457	935	15,104,336	97	1,102,133	243	7,237,228
2009	2,943	57,535,569	754	12,941,788	109	967,852	376	9,006,375
2010	2,869	57,105,381	642	11,587,768	148	1,430,540	579	9,624,392
2011	2,491	51,112,185	521	9,279,356	133	1,281,149	446	6,307,484
2012	2,437	52,143,234	374	6,993,865	134	1,142,073	445	6,154,151
2013	2,891	59,397,052	408	9,754,822	167	1,536,448	518	6,797,245
一 月(Jan.)	241	4,910,991	22	576,884	14	107,280	49	510,421
二 月(Feb.)	227	4,889,608	34	823,490	13	125,573	45	511,836
三 月(Mar.)	263	5,444,561	40	687,551	15	113,514	42	499,294
四 月(Apr.)	226	4,693,098	37	1,169,414	10	109,305	47	1,084,370
五 月(May)	260	4,776,415	41	869,522	14	143,050	42	438,566
六 月(June)	231	4,360,950	33	852,883	16	108,253	39	522,547
七 月(July)	235	5,070,700	32	850,364	17	102,679	40	407,891
八 月(Aug.)	241	5,022,014	33	815,885	15	171,420	46	683,214
九 月(Sep.)	230	4,836,248	40	1,149,688	14	124,887	39	440,908
十 月(Oct.)	231	4,994,536	32	640,618	14	157,369	40	469,288
十一月(Nov.)	248	5,045,318	36	843,390	11	157,172	43	398,499
十二月(Dec.)	258	5,352,613	28	475,133	14	115,946	46	830,411

資料來源：麥寮工業區專用港管理股份有限公司

Table 2. Number of Incoming Vessels by Registered Nationality

Unit : Vessel;Ton

新加坡 Singapore		南 韓 Rep. Of Korea		賴 比 瑞 亞 Liberia		其 他 Others	
艘次	總噸位	艘次	總噸位	艘次	總噸位	艘次	總噸位
No. of Vessels	G. T.	No. of Vessels	G. T.	No. of Vessels	G. T.	No. of Vessels	G. T.
80	1,364,884	155	540,676	113	2,153,091	253	6,301,355
132	2,156,932	258	805,547	121	2,207,414	401	9,444,794
127	2,916,450	252	958,336	118	3,255,363	533	13,065,259
192	4,529,051	185	871,648	229	9,538,582	551	13,754,260
321	7,109,280	246	1,176,695	221	10,340,691	434	11,386,245
250	4,477,255	280	1,416,734	329	12,625,913	476	12,695,086
314	4,739,115	509	2,217,131	359	10,699,151	628	15,953,720
290	5,223,831	473	2,380,343	292	8,553,342	695	15,224,244
272	5,275,676	333	1,340,747	294	10,798,873	805	17,204,258
253	5,319,623	292	1,862,746	222	10,631,574	733	16,648,738
217	5,113,297	196	1,251,014	228	11,831,554	750	16,048,331
197	3,820,661	136	757,618	282	16,720,978	869	16,553,888
229	5,032,853	166	1,064,584	244	14,832,412	1,159	20,378,688
25	513,823	16	154,400	24	1,416,175	91	1,632,008
14	263,492	15	69,823	21	1,234,654	85	1,860,740
27	526,054	13	176,937	26	1,603,814	100	1,837,397
18	408,520	11	50,155	11	706,216	92	1,165,118
24	531,119	18	115,808	16	1,141,712	105	1,536,638
20	364,086	13	55,100	16	1,198,449	94	1,259,632
17	384,716	15	156,882	21	991,737	93	2,176,431
20	546,589	16	69,957	21	1,344,881	90	1,390,068
14	484,889	12	60,349	17	1,082,048	94	1,493,479
16	350,000	12	57,158	19	1,241,231	98	2,078,872
17	314,430	14	47,922	29	1,639,930	98	1,643,975
17	345,135	11	50,093	23	1,231,565	119	2,304,330

附表三 進 港 輪 船 種 類

單位：艘次

年 (月) 別	總計	油輪	液化輪	貨櫃輪	化學輪
Year and Month	Total	Tankers	Liquid Chemical Tankers	Containers	Chemical Tankers
2001	1,371	298	12	135	702
2002	1,764	490	4	213	818
2003	2,208	1,054	506	223	208
2004	2,476	1,358	597	217	35
2005	2,551	1,433	602	193	18
2006	2,480	1,501	399	246	14
2007	3,172	1,857	683	222	53
2008	3,025	1,348	869	183	80
2009	2,943	1,003	393	238	631
2010	2,869	941	375	253	795
2011	2,491	797	290	197	788
2012	2,437	795	248	113	892
2013	2,891	942	295	217	885
一 月(Jan.)	241	81	32	19	81
二 月(Feb.)	227	83	30	13	61
三 月(Mar.)	263	83	32	21	74
四 月(Apr.)	226	74	21	17	68
五 月(May)	260	76	25	21	95
六 月(June)	231	72	18	16	76
七月(July)	235	81	21	18	65
八月(Aug.)	241	77	31	18	62
九月(Sep.)	230	75	18	17	75
十月(Oct.)	231	79	13	18	69
十一月(Nov.)	248	75	21	20	81
十二月(Dec.)	258	86	33	19	78

資料來源：麥寮工業區專用港管理股份有限公司

Table 3. Number of Incoming Vessels by Kind

				Unit : Vessel
一般貨輪	散裝輪	煤炭輪	其 他	
Ordinary Cargoes	Cargos in Bulk	COAL	Others	
55	50	102	17	
47	55	69	68	
99	47	29	42	
97	55	58	59	
119	80	64	42	
134	99	47	40	
134	143	38	42	
121	163	26	235	
448	166	8	56	
283	161	3	58	
219	145	8	47	
179	135	9	66	
158	149	11	234	
10	10	1	7	
16	14		10	
17	12	2	22	
19	15		12	
15	10		18	
13	9	1	26	
13	15	2	20	
19	11	1	22	
13	14	1	17	
8	14	1	29	
8	13	1	29	
7	12	1	22	

附表四 進 港 輪 船 航 次

單位：航次

年 (月) 別	國內						
	總計	小計	高雄	台中	台北	基隆	其他
Year and Month	Total	Sub Total	Kaohsiung	Taichung	Taipei	Keelung	Others
2001	1,371	119	29	15	21	41	13
2002	1,764	201	45	34	64	17	41
2003	2,208	317	64	11	125	20	97
2004	2,476	473	106	18	75	26	248
2005	2,551	432	64	6	61	19	282
2006	2,480	244	42	5	81	18	98
2007	3,172	198	59	4	78	12	45
2008	3,025	99	36	1	34	8	20
2009	2,943	109	48	2	2	6	51
2010	2,869	138	65	4	7	28	34
2011	2,491	122	50	3	9	9	51
2012	2,437	119	55	2	4	5	53
2013	2,891	120	57	5	5	1	52
一月(Jan.)	241	11	6	1	-	-	4
二月(Feb.)	227	9	3	-	-	-	6
三月(Mar.)	263	10	5	1	-	-	4
四月(Apr.)	226	13	3	2	1	1	6
五月(May)	260	9	4	-	-	-	5
六月(June)	231	9	5	-	-	-	4
七月(July)	235	15	7	-	3	-	5
八月(Aug.)	241	8	4	-	1	-	3
九月(Sep.)	230	9	4	-	-	-	5
十月(Oct.)	231	12	8	1	-	-	3
十一月(Nov.)	248	6	2	-	-	-	4
十二月(Dec.)	258	9	6	-	-	-	3

資料來源：麥寮工業區專用港管理股份有限公司

Table 4. Number of Incoming Vessels by Line of Navigation

Unit : Voyage Jnit : Voyage

小計	國					外			
	香港	日本	南韓	菲律賓	澳洲	沙烏地阿 拉伯	越南	印尼	其他
Sub Total	Hong kong	Japain	Korea	Philippine	Australia	Saudiarabi a	Vietnam	Indonesia	Others
1,252	179	655	229	26	27	30	7	13	86
1,563	400	551	304	24	31	31	20	9	193
1,891	738	281	372	86	46	52	25	17	274
2,003	669	268	426	140	88	86	20	25	281
2,119	583	371	470	76	83	87	45	34	370
2,236	589	399	445	87	93	120	57	61	385
2,974	856	551	688	117	111	128	77	52	394
2,926	951	482	604	111	114	180	94	43	347
2,834	723	279	451	115	123	128	82	56	877
2,731	591	140	371	119	122	152	50	43	1,143
2,369	459	102	277	130	97	108	47	39	1,110
2,318	305	59	245	128	92	107	53	32	1,297
2,771	355	60	242	201	102	126	58	33	1,594
230	28	6	18	16	7	7	5	3	140
218	25	9	18	18	9	8	4	4	123
253	31	5	22	19	5	13	6	2	150
213	32	5	16	15	10	8	8	4	115
251	38	3	25	21	12	13	1	2	136
222	30	1	22	14	8	7	4	-	136
220	26	4	20	14	12	10	7	3	124
233	33	7	25	13	7	9	9	4	126
221	26	5	13	18	10	14	5	2	128
219	28	4	23	14	9	18	1	2	120
242	25	6	20	22	8	9	4	5	143
249	33	5	20	17	5	10	4	2	153

附表五 出 港 輪 船 航 次

單位：航次

年 (月) 別 Year and Month	國內						
	總計 Total	小計 Sub Total	高雄 Kaohsiung	台北 Taipei	台中 Taichung	基隆 Keelung	其他 Others
2001	1,374	1,035	3	3	11	21	997
2002	1,758	1,576	8	11	33	6	1,518
2003	2,210	569	79	96	4	1	389
2004	2,469	903	111	67	6	5	714
2005	2,549	488	69	67	5	2	345
2006	2,480	234	98	39	7	-	90
2007	3,176	206	91	67	2	5	41
2008	3,025	103	84	2	2	1	14
2009	2,937	122	79	3	3	8	29
2010	2,875	136	72	1	2	26	35
2011	2,483	115	60	-	2	1	52
2012	2,440	125	74	-	2	-	49
2013	2,893	108	67	2	2	-	37
一月(Jan.)	243	11	7	-	1	-	3
二月(Feb.)	226	7	4	-	-	-	3
三月(Mar.)	261	7	6	-	-	-	1
四月(Apr.)	230	8	6	-	-	-	2
五月(May)	256	9	4	-	-	-	5
六月(June)	230	9	6	-	-	-	3
七月(July)	235	14	8	2	-	-	4
八月(Aug.)	243	9	6	-	-	-	3
九月(Sep.)	233	8	5	-	-	-	3
十月(Oct.)	231	7	2	-	1	-	4
十一月(Nov.)	241	7	5	-	-	-	2
十二月(Dec.)	264	12	8	-	-	-	4

資料來源：麥寮工業區專用港管理股份有限公司

Table 5. Number of Outgoing Vessels by Line of Navigation

Unit : Voyage

小計	國					外					其他
	日本	香港	南韓	新加坡	澳洲	菲律賓	越南	馬來西亞	沙烏地阿拉伯		
Sub Total	Japain	Hong kong	Korea	Singapore	Australia	Philippine	Vietnam	Malaysia	Saudi arabia	Others	
339	186	52	59	16	4	2	2	-	2	16	
182	16	89	31	15	-	6	5	3	7	10	
1,641	108	726	296	65	49	101	26	26	63	181	
1,566	226	509	279	63	74	121	25	47	80	142	
2,061	318	693	338	160	81	97	53	23	67	231	
2,246	306	801	364	193	78	87	74	25	81	237	
2,970	430	1,067	546	219	83	114	76	46	102	287	
2,922	398	1,146	401	247	79	117	75	23	148	288	
2,815	265	769	333	251	95	155	90	20	121	716	
2,739	207	487	320	280	115	125	72	27	137	969	
2,368	158	322	230	335	96	157	75	27	96	872	
2,315	108	192	168	337	106	156	110	37	106	995	
2,785	59	274	187	400	106	222	111	41	112	1,273	
232	6	23	20	30	7	14	9	2	10	111	
219	4	20	12	39	5	18	8	5	9	99	
254	9	27	12	38	10	24	10	3	11	110	
222	5	18	11	37	8	17	12	5	8	101	
247	7	27	12	37	8	18	9	7	6	116	
221	-	25	17	32	10	18	10	3	8	98	
221	6	24	14	28	12	15	4	3	9	106	
234	5	22	25	33	6	19	11	2	9	102	
225	3	18	18	33	11	19	9	2	10	102	
224	2	21	18	33	15	18	9	4	15	89	
234	8	25	14	28	6	24	10	4	9	106	
252	4	24	14	32	8	18	10	1	8	133	

附表六 進港輪船噸級與在港停泊時間

單位：艘次；噸

停泊時間 Mooring's Time	合計Total					輪 船
						Classification of
	艘次 No. of Vessels	未滿1000噸 Under1,000G.T.	1,000-4,999噸 1,000-4,999G.T.	5,000-9,999噸 5,000-9,999G.T.	10,000-19,999噸 10,000-19,999G.T.	
24小時以內 Under 24hours	1,199	62	562	298		121
25-48小時 25-48hours	1,202		267	365		131
49-72小時 49-72hours	274	1	38	69		61
73-96小時 73-96hours	90		4	14		27
97-120小時 97-120hours	57		1	4		15
121-144小時 121-144hours	39			1		15
145-168小時 145-168hours	11					1
169-192小時 169-192hours	12					1
193小時以上 over193hours	9			1		
年 (月) 別 Year and Month						
2001	1,371	69	628	196		174
2002	1,764	129	677	318		288
2003	2,208	243	870	284		352
2004	2,476	298	913	267		404
2005	2,551	238	939	364		393
2006	2,480	139	881	328		408
2007	3,172	82	1,368	576		334
2008	3,025	92	1,285	528		297
2009	2,943	72	1,079	619		331
2010	2,869	79	883	740		353
2011	2,491	66	718	628		361
2012	2,437	68	743	566		334
2013	2,891	61	877	751		370
一 月(Jan.)	241	8	73	53		34
二 月(Feb.)	227	6	73	42		39
三 月(Mar.)	263	5	77	59		44
四 月(Apr.)	226	4	77	57		19
五 月(May)	260	5	76	74		37
六 月(June)	231	6	74	66		26
七月(July)	235	6	64	67		25
八月(Aug.)	241	4	64	73		35
九月(Sep.)	230	6	70	62		26
十月(Oct.)	231	5	61	67		28
十一月(Nov.)	248	1	84	58		32
十二月(Dec.)	258	5	84	73		25

資料來源：麥寮工業區專用港管理股份有限公司

Table 6. Number of Incoming Vessels by Gross Tonnage And Time of Vessels Mooring in Port

Unit : Vessels;Ton

噸 位 分 類 Vessels' Gross Tonnage				平均停泊時間(天) Average Mooring's Time(Day)
20,000-39,999噸	40,000-59,999噸	60,000-99,999噸	滿100,000噸以上	
20,000-39,999G.T.	40,000-59,999G.T.	60,000-99,999G.T.	Over100,000G.T.	
125	24	7		0.59
236	93	38	72	1.43
35	29	26	15	2.42
4	14	27		3.48
4	1	32		4.52
5		17	1	5.46
2	3	5		6.20
		11		7.40
1		7		10.13
159	75	47	23	1.67
170	63	70	49	1.36
237	71	86	65	1.21
341	87	91	75	1.24
361	80	88	88	1.30
463	94	82	85	1.25
463	139	115	95	1.27
450	183	100	90	1.28
456	186	102	98	1.31
413	186	129	86	1.33
364	161	120	73	1.54
360	142	137	87	1.48
411	163	170	88	1.37
43	7	15	8	1.40
31	16	12	8	1.43
35	23	12	8	1.35
35	10	18	6	1.47
33	15	15	5	1.29
30	11	11	7	1.32
38	9	19	7	1.46
30	15	11	9	1.58
29	18	12	7	1.49
31	18	14	7	1.39
41	10	16	6	1.41
35	11	15	10	1.40

附表七 進出港貨物國輪外輪承運量

單位：公噸

年 (月) 別	總計			
	國內		國外	
	Domestic		Foreign	
	國輪	外輪	國輪	外輪
Year and Month	Domestic V.	Foreign V.	Domestic V.	Foreign V.
2001	697,005	69,885	102,428	25,450,728
2002	1,204,083	93,651	307,286	32,657,186
2003	2,406,163	3,626	665,865	40,111,760
2004	2,692,184	97,637	402,932	49,695,779
2005	2,681,181	2,695	198,222	55,259,819
2006	2,436,106	1,771	52,560	56,764,224
2007	1,880,616	65,620	7,771	67,939,596
2008	602,519	-	231,435	68,346,541
2009	479,961	46,009	167,193	69,698,054
2010	743,974	61,375	115,897	66,982,935
2011	618,654	151,808	87,321	59,487,365
2012	500,327	163,843	255,040	63,788,577
2013	243,416	328,690	1,108,102	68,746,693
一月(Jan.)	36,779	-	45,723	5,709,469
二月(Feb.)	18,490	19,996	96,891	5,701,070
三月(Mar.)	5,103	20,023	126,155	6,222,226
四月(Apr.)	15,185	15,034	50,190	5,450,547
五月(May)	17,650	15,046	76,300	4,944,775
六月(June)	6,328	25,049	76,607	5,018,389
七月(July)	29,354	22,440	73,068	6,109,405
八月(Aug.)	17,265	20,046	148,846	6,023,895
九月(Sep.)	7,017	10,016	100,492	5,938,599
十月(Oct.)	62,275	60,777	102,845	5,579,830
十一月(Nov.)	10,001	95,203	109,016	5,812,853
十二月(Dec.)	17,969	25,060	101,969	6,235,635

Table 7. Tonnage of Imports & Exports Carried by Domestic and Foreign Vessels

Unit : M.T.

進		港		出		港	
Import				Export			
國內		國外		國內		國外	
Domestic		Foreign		Domestic		Foreign	
國輪	外輪	國輪	外輪	國輪	外輪	國輪	外輪
Domestic V.	Foreign V.	Domestic V.	Foreign V.	Domestic V.	Foreign V.	Domestic V.	Foreign V.
96,168	-	6,366	22,229,919	600,837	69,885	96,062	3,220,809
45,629	-	65,847	26,302,254	1,158,454	93,651	241,439	6,354,932
50,564	-	430,827	31,583,522	2,355,599	3,626	235,038	8,528,238
112,594	-	184,888	39,008,826	2,579,590	97,637	218,044	10,686,953
131,616	-	69,535	41,164,939	2,549,565	2,695	128,687	14,094,880
66,156	-	-	42,081,790	2,369,950	1,771	52,560	14,682,434
42,350	-	-	49,454,178	1,838,266	65,620	7,771	18,485,418
22,800	-	231,435	47,148,952	579,719	-	-	21,197,589
17,341	-	5,783	48,268,482	462,620	46,009	161,410	21,429,572
11,302	-	4,853	48,075,276	732,672	61,375	111,044	18,907,659
35,872	-	18,087	42,808,579	582,782	151,808	69,234	16,678,786
34,536	-	2,002	45,199,323	465,791	163,843	253,038	18,589,254
11,500	-	3,108	48,909,690	231,916	328,690	1,104,994	19,837,003
-	-	-	3,700,824	36,779	-	45,723	2,008,645
-	-	-	3,914,415	18,490	19,996	96,891	1,786,655
-	-	-	4,522,137	5,103	20,023	126,155	1,700,089
-	-	-	4,133,518	15,185	15,034	50,190	1,317,029
-	-	-	3,438,427	17,650	15,046	76,300	1,506,348
-	-	-	3,546,751	6,328	25,049	76,607	1,471,638
-	-	-	4,623,985	29,354	22,440	73,068	1,485,420
-	-	3,108	4,216,067	17,265	20,046	145,738	1,807,828
-	-	-	4,274,811	7,017	10,016	100,492	1,663,788
11,500	-	-	3,965,125	50,775	60,777	102,845	1,614,705
-	-	-	4,121,955	10,001	95,203	109,016	1,690,898
-	-	-	4,451,675	17,969	25,060	101,969	1,783,960

附表八 進 港 貨 物 （地區別）

單位：公噸

年 (月) 別	國		內			
	總 計	小 計	花 蓮	蘇 澳	高 雄	其 他
Year and Month	<u>Total</u>	<u>Sub Total</u>	<u>Hualien</u>	<u>Suauo</u>	<u>Kaohsiung</u>	<u>Others</u>
2001						
2002						
2003						
2004	39,039,900	112,594	112,405	-	189	-
2005	38,666,233	131,616	120,005	11,501	110	-
2006	42,147,951	66,156	65,906	-	250	-
2007	49,496,526	42,350	34,301	-	8,049	-
2008	47,403,187	22,800	22,800	-	-	-
2009	48,291,607	17,341	11,301	-	3,131	2,909
2010	48,091,430	11,302	11,302	-	-	-
2011	42,862,537	35,872	23,003	-	-	12,869
2012	45,235,863	34,536	34,536	-	-	-
2013	48,924,299	11,500	11,500	-	-	-
一 月(Jan.)	3,700,824	-	-	-	-	-
二 月(Feb.)	3,914,416	-	-	-	-	-
三 月(Mar.)	4,522,136	-	-	-	-	-
四 月(Apr.)	4,133,518	-	-	-	-	-
五 月(May)	3,438,427	-	-	-	-	-
六 月(June)	3,546,752	-	-	-	-	-
七月(July)	4,623,986	-	-	-	-	-
八月(Aug.)	4,219,175	-	-	-	-	-
九月(Sep.)	4,274,811	-	-	-	-	-
十月(Oct.)	3,976,624	11,500	11,500	-	-	-
十一月(Nov.)	4,121,955	-	-	-	-	-
十二月(Dec.)	4,451,675	-	-	-	-	-

資料來源：麥寮工業區專用港管理股份有限公司

Table 8. Tonnage of Imports (by Region)

Unit : M.T.

小計	外 國									
	沙烏地阿拉伯	澳洲	科威特	中國大陸	伊 朗	阿 曼	阿拉伯聯合大公國	印尼	伊拉克	其 他
Sub Total	Saudi arabia	Australia	Kuwait	China mainland	Iran	Oman	UAE	Indonesia	Iraq	Others
38,927,306	9,937,993	6,518,872	5,728,593	5,835,742	2,488,635	1,110,456	989,078	967,087	-	5,350,850
38,534,617	9,397,847	8,053,348	5,926,999	4,617,709	2,802,544	1,523,488	1,215,440	980,115	-	4,017,127
42,081,795	10,359,513	7,743,850	5,972,172	3,303,790	2,237,423	1,105,770	1,678,004	3,193,661	1,742,009	4,745,603
49,454,176	10,636,547	10,396,485	6,551,422	3,864,632	3,229,756	1,395,340	1,634,974	2,938,904	3,167,892	5,638,224
47,380,387	11,330,939	10,831,613	6,901,099	2,823,131	3,059,499	1,361,613	2,107,495	2,128,152	2,799,784	4,037,062
48,274,266	11,299,622	9,224,412	6,537,528	995,885	839,101	2,443,997	1,741,698	2,786,044	4,414,702	7,991,277
48,080,128	10,512,341	8,363,512	6,437,002	680,054	944,870	1,678,995	1,938,966	1,736,894	2,913,919	12,873,575
42,826,665	8,576,460	6,920,413	6,310,330	418,094	899,983	496,051	1,902,473	1,849,274	559,750	14,893,837
45,201,327	8,545,109	5,913,064	7,473,517	387,929	628,079	2,257,558	1,895,016	2,401,952	3,256,354	12,442,749
48,912,799	9,532,587	5,811,218	7,953,234	236,715	364,121	2,569,598	1,913,818	2,721,871	3,239,679	14,569,958
3,700,824	362,728	646,051	778,330	993	14,907	418,072	151,015	368,232	267,841	692,655
3,914,416	639,519	736,534	555,838	-	8,000	323,302	137,973	295,295	265,937	952,018
4,522,136	1,022,276	305,140	885,826	25,506	12,000	143,901	270,058	322,135	268,369	1,266,925
4,133,518	895,838	334,169	289,019	2,347	-	275,627	77,413	439,366	274,733	1,545,006
3,438,427	556,185	749,916	837,362	26,061	23,599	9,155	180,856	10,000	-	1,045,293
3,546,752	844,305	416,632	552,288	34,867	10,000	286,825	68,504	159,000	275,349	898,982
4,623,986	914,460	785,105	414,152	34,013	10,167	298,097	248,049	106,205	266,969	1,546,769
4,219,175	678,674	348,523	716,299	43,907	10,500	422,812	97,192	135,575	538,660	1,227,033
4,274,811	1,139,670	468,324	703,256	23,385	14,700	41,273	134,801	162,700	269,947	1,316,755
3,965,124	682,544	319,627	768,409	28,560	-	-	289,607	163,498	273,894	1,438,985
4,121,955	1,133,229	205,669	547,888	2,427	27,892	4,750	101,691	405,365	-	1,693,044
4,451,675	663,159	495,528	904,567	14,649	232,356	345,784	156,659	154,500	537,980	946,493

附表九 出 港 貨 物 (地區別)

單位：公噸

年 (月) 別 Year and Month	國 內						
	總 計	Domestic					
	小 計	高 雄	台 北	蘇 澳	金 門	其 他	
	<u>Total</u>	<u>Sub Total</u>	<u>Kaohsiung</u>	<u>Taipei</u>	<u>Suaou</u>	<u>Kin Men</u>	<u>Others</u>
2001							
2002							
2003							
2004	12,732,276	2,677,226	1,042,225	865,093	245,620	36,889	487,399
2005	16,238,493	2,544,987	1,745,019	552,503	117,365	44,994	85,106
2006	17,106,717	2,371,720	982,727	950,429	293,658	41,516	103,390
2007	20,397,075	1,903,888	191,066	1,371,077	207,043	11,106	123,596
2008	21,777,308	579,718	135,272	119,925	198,945	-	125,576
2009	22,099,608	508,627	138,788	13,531	178,803	-	177,505
2010	19,812,748	794,046	94,355	27,158	442,835	8,343	221,355
2011	17,482,609	734,589	118,674	16,099	435,112	-	164,704
2012	19,471,922	629,632	108,056	10,470	395,521	-	115,585
2013	21,502,598	560,607	107,961	14,570	239,882	-	198,194
一 月(Jan.)	2,091,146	36,779	5,197	-	30,077	-	1,505
二 月(Feb.)	1,922,030	38,485	15,589	-	19,996	-	2,900
三 月(Mar.)	1,851,368	25,126	5,103	-	20,023	-	-
四 月(Apr.)	1,397,439	30,219	15,185	-	15,034	-	-
五 月(May)	1,615,344	32,696	15,132	-	15,046	-	2,518
六 月(June)	1,579,622	31,377	4,825	-	25,049	-	1,503
七 月(July)	1,610,282	51,794	10,769	14,570	22,440	-	4,015
八 月(Aug.)	1,990,875	37,311	15,795	-	20,046	-	1,470
九 月(Sep.)	1,781,312	17,033	-	-	10,016	-	7,017
十 月(Oct.)	1,829,103	111,553	10,472	-	17,058	-	84,023
十一月(Nov.)	1,905,117	105,204	-	-	20,037	-	85,167
十二月(Dec.)	1,928,960	43,030	9,894	-	25,060	-	8,076

資料來源：麥寮工業區專用港管理股份有限公司

Table 9. Tonnage of Exports (by Region)

Unit : M.T. Unit : M.T.									
國 外									
Foreign									
小 計	新加坡	中國大陸	菲律賓	美國	澳洲	印尼	香港	越南	其他
Sub Total	Singapore	China mainland	Philippine	United States	Australia	Indonesia	Hong kong	Vietnam	Others
10,055,050	1,607,450	2,321,149	1,545,807	968,526	586,238	60,360	1,166,288	-	1,799,232
13,693,506	2,835,727	2,660,494	1,698,645	1,160,177	831,573	672,875	586,622	-	3,247,393
14,734,997	3,046,986	2,950,357	1,082,112	849,629	1,305,700	642,518	663,592	1,556,389	2,637,714
18,493,187	3,500,386	4,493,062	1,594,111	1,034,871	1,780,948	571,537	677,434	1,911,893	2,928,945
21,197,590	4,033,206	6,639,235	1,173,748	729,939	1,482,649	809,143	348,332	1,979,365	4,001,973
21,590,981	2,586,354	5,645,336	1,884,106	985,313	1,133,237	1,416,779	702,650	1,968,193	5,269,013
19,018,702	2,911,250	5,420,436	1,850,026	677,894	972,573	1,655,019	545,449	1,179,653	3,806,402
16,748,020	2,792,847	4,516,875	1,833,483	451,362	996,955	818,625	882,038	1,250,721	3,205,114
18,842,290	4,424,542	4,677,789	3,139,983	462,303	889,843	691,498	805,829	1,305,396	2,445,107
20,941,991	2,766,824	6,252,613	3,807,887	179,522	1,262,184	983,273	643,925	1,281,009	3,764,754
2,054,367	295,802	633,695	229,283	10,500	134,001	30,407	15,305	129,855	575,519
1,883,545	322,144	499,185	297,110	15,556	177,028	139,580	48,635	41,775	342,532
1,826,242	246,080	550,343	332,934	38,556	148,254	35,102	87,623	105,537	281,813
1,367,220	282,407	420,341	140,061	-	62,634	70,420	45,071	141,562	204,724
1,582,648	206,002	498,265	361,504	39,540	70,395	80,389	46,783	90,678	189,092
1,548,245	177,779	463,996	230,150	23,050	111,731	110,124	50,186	105,970	275,259
1,558,488	148,366	478,057	415,180	2,520	51,752	51,983	9,281	76,580	324,769
1,953,564	203,660	535,243	374,945	11,550	143,987	61,666	10,577	206,150	405,786
1,764,279	308,584	525,120	286,042	-	69,048	117,668	66,507	135,395	255,915
1,717,550	184,159	491,822	324,958	26,250	126,482	101,958	37,499	72,614	351,808
1,799,913	135,392	572,412	363,711	11,000	151,475	72,667	130,477	74,961	287,818
1,885,930	256,449	584,134	452,009	1,000	15,397	111,309	95,981	99,932	269,719

附表十 進 港 貨 物 分 類 (按 月)

單位：公噸

年 (月) 別 Year and Month	總 計 Total	礦 產 品 Minerals					
		煤 Coal & Coke	鐵 礦 砂 Iron Ore	土、石、砂 礫 Sand & Gravel	硫 磺 Sulphur	粗 鹽 Salt	其 他 Others
2001	21,862,645	9,550,636	-	-	-	809,479	-
2002	26,112,303	8,312,020	-	-	-	864,124	111,770
2003	30,726,933	9,186,476	-	25,486	-	1,057,068	46,253
2004	39,039,900	12,172,091	-	162,380	-	1,403,019	139,234
2005	38,666,233	11,994,071	-	164,738	-	1,237,660	156,379
2006	42,147,947	12,490,414	-	447,450	-	1,743,925	100,483
2007	49,496,527	15,240,616	-	578,233	-	1,699,685	72,198
2008	47,403,188	13,185,738	-	437,432	-	2,226,171	27,940
2009	48,291,606	13,340,191	-	352,208	-	1,632,852	21,692
2010	48,091,428	13,740,729	-	329,128	-	1,821,464	27,095
2011	42,862,538	12,922,261	-	260,799	-	1,722,395	17,543
2012	45,235,860	12,978,908	-	300,876	-	1,794,245	23,767
2013	48,924,296	13,991,618	-	142,666	-	1,794,218	27,496
一 月(Jan.)	3,700,824	891,755	-	-	-	72,600	993
二 月(Feb.)	3,914,414	960,819	-	-	-	188,584	-
三 月(Mar.)	4,522,138	1,155,979	-	23,299	-	72,507	2,207
四 月(Apr.)	4,133,518	1,492,730	-	-	-	188,589	3,310
五 月(May)	3,438,428	1,056,595	-	23,303	-	144,344	2,758
六 月(June)	3,546,750	781,703	-	23,511	-	185,877	1,705
七 月(July)	4,623,985	1,692,599	-	23,497	-	153,927	3,641
八 月(Aug.)	4,219,176	1,090,850	-	23,496	-	93,816	2,207
九 月(Sep.)	4,274,810	1,436,352	-	-	-	147,236	5,496
十 月(Oct.)	3,976,625	1,057,479	-	25,560	-	139,220	602
十一月(Nov.)	4,121,954	1,579,336	-	-	-	117,675	2,427
十二月(Dec.)	4,451,674	795,421	-	-	-	289,843	2,150

資料來源：麥寮工業區專用港管理股份有限公司

Table 10. Classification of Imports (by Month)

Unit : M.T.

非金屬礦物製品 Non-metalic Mineral Products			
汽、柴、燃料油	原油	輕油	其他
Gasoline, Diesel, Fuel Oil	Grude Oil	Naphtha	Others
-	-	-	10,981,472
-	-	-	15,819,147
-	15,442,885	3,445,306	80,629
-	19,786,495	3,441,305	560,565
-	20,439,568	2,469,388	535,310
36,629	22,076,578	3,049,811	604,229
-	23,788,323	5,303,729	602,331
-	23,187,786	6,284,727	458,045
2,909	24,318,216	6,485,165	704,600
-	22,299,715	7,639,160	416,349
66,292	19,454,259	6,140,506	710,131
-	21,773,269	6,391,800	367,489
-	23,247,971	7,074,850	843,505
-	1,951,814	628,401	-
-	2,075,726	504,183	39,085
-	2,172,899	840,369	122,527
-	1,653,927	582,379	96,667
-	1,342,800	542,629	179,099
-	1,876,040	456,967	101,799
-	1,890,803	585,796	77,265
-	2,206,302	580,069	56,503
-	1,920,945	472,721	137,333
-	1,896,089	642,608	28,827
-	1,743,759	538,504	4,400
-	2,516,867	700,224	-

附表十 進 港 貨 物 分 類 (按 月) (續 完)

單位：公噸

年 (月) 別 Year and Month	化 學 品 Chemical Products			基 本 金 屬 Basic Metal	
	肥 料 Fertilizer	動 植 物 性 油 脂 Animal & Vegetable Grease	其 他 Others	鋼 鐵 Iron & Steel	廢 鐵 Iron & Steel Scrap
2001	-	-	494,438	-	-
2002	-	-	995,195	-	-
2003	-	-	1,442,304	-	-
2004	-	-	1,232,141	-	-
2005	-	-	1,378,237	-	-
2006	-	-	1,586,764	-	-
2007	-	-	2,142,588	-	-
2008	-	-	1,595,062	-	-
2009	-	-	1,416,932	-	-
2010	-	-	1,804,662	-	-
2011	-	-	1,470,673	-	-
2012	-	-	1,566,478	-	-
2013	-	-	1,789,997	-	-
一 月 (Jan.)	-	-	155,261	-	-
二 月 (Feb.)	-	-	145,812	-	-
三 月 (Mar.)	-	-	132,351	-	-
四 月 (Apr.)	-	-	115,916	-	-
五 月 (May)	-	-	146,900	-	-
六 月 (June)	-	-	119,148	-	-
七 月 (July)	-	-	196,457	-	-
八 月 (Aug.)	-	-	165,878	-	-
九 月 (Sep.)	-	-	154,512	-	-
十 月 (Oct.)	-	-	174,740	-	-
十 一 月 (Nov.)	-	-	135,853	-	-
十 二 月 (Dec.)	-	-	147,169	-	-

Table 10. Classification of Imports (by Month)

Unit : M.T.

基本金屬 Basic Metal		金屬製品 Metal Products			其他什貨
其他	機件	電器機械器材	其他		
Others	Grude Oil	Electrical Machinery, Apparatus	Others	General Merchandise	
-	-	-	-	26,620	
-	-	-	10,047	-	
-	-	-	-	526	
-	1,272	-	-	141,398	
-	6,965	408	110	283,399	
-	11,252	-	58	354	
-	614	-	-	68,210	
-	-	-	287	-	
-	178	-	1,196	15,467	
-	1,132	-	431	11,563	
-	736	-	418	96,525	
-	492	-	-	38,536	
-	270	-	-	11,705	
-	-	-	-	-	
-	-	-	-	205	
-	-	-	-	-	
-	-	-	-	-	
-	-	-	-	-	
-	-	-	-	-	
-	-	-	-	-	
-	55	-	-	-	
-	215	-	-	-	
-	-	-	-	11,500	
-	-	-	-	-	
-	-	-	-	-	

附表十一 進 港 貨 物 分 類 (按碼頭)

單位：公噸

年 (月) 別 Year and Month	總 計 Total	礦 產 品 Minerals					
		煤 Coal & Coke	鐵 礦 砂 Iron Ore	土、石、砂 礫 Sand & Gravel	硫 磺 Sulphur	粗 鹽 Salt	其 他 Others
2001	21,862,645	9,550,636	-	-	-	809,479	-
2002	26,112,303	8,312,020	-	-	-	864,124	111,770
2003	30,726,933	9,186,476	-	25,486	-	1,057,068	46,253
2004	37,615,228	11,669,042	-	130,652	-	1,267,204	104,405
2005	41,992,805	12,321,245	-	197,997	-	1,317,494	120,406
2006	42,147,947	12,490,414	-	447,450	-	1,743,925	100,483
2007	49,496,527	15,227,086	-	578,233	-	1,699,685	72,198
2008	47,403,186	13,185,738	-	437,432	-	2,226,171	27,942
2009	48,291,606	13,340,191	-	352,208	-	1,632,852	21,692
2010	48,091,429	13,740,729	-	329,128	-	1,821,464	27,096
2011	42,862,538	12,922,261	-	260,799	-	1,722,395	17,543
2012	45,235,863	12,978,907	-	300,876	-	1,794,245	23,767
2013	48,924,299	13,991,618	-	142,666	-	1,794,218	27,496
東1碼頭	1,438	-	-	-	-	-	963
東2碼頭	3,503,671	1,697,953	-	-	-	1,794,218	-
東3碼頭	6,206,834	6,206,834	-	-	-	-	-
東4碼頭	6,086,831	6,086,831	-	-	-	-	-
東5碼頭	169,199	-	-	142,666	-	-	26,533
東6碼頭	291,812	-	-	-	-	-	-
東7碼頭	711,368	-	-	-	-	-	-
東8碼頭	2,337,406	-	-	-	-	-	-
東9N/S碼頭	161,361	-	-	-	-	-	-
東10N/S碼頭	256,245	-	-	-	-	-	-
北1碼頭	504,450	-	-	-	-	-	-
北2碼頭	518,012	-	-	-	-	-	-
北5碼頭	7,022	-	-	-	-	-	-
北6碼頭	-	-	-	-	-	-	-
北7碼頭	51,094	-	-	-	-	-	-
西1碼頭	608,767	-	-	-	-	-	-
西2碼頭	10,981,266	-	-	-	-	-	-
西3碼頭	16,527,523	-	-	-	-	-	-

資料來源：麥寮工業區專用港管理股份有限公司

Table 11. Classification of Imports (by Wharf)

Unit : M.T.

非金屬礦物製品 Non-metallic Mineral Products			
汽、柴、燃料油	原油	輕油	其他
Gasoline, Diesel, Fuel Oil	Grude Oil	Naphtha	Others
-	-	-	10,981,472
-	-	-	15,819,147
-	15,442,885	3,445,306	80,629
-	19,256,748	3,395,226	559,611
-	23,411,864	2,632,987	490,109
36,629	22,076,578	3,049,811	604,229
-	23,647,080	5,227,816	602,331
-	23,187,783	6,284,726	458,045
2,909	24,318,216	6,485,164	704,600
-	22,299,714	7,639,159	416,349
66,291	19,454,260	6,140,507	710,130
-	21,773,270	6,391,802	367,489
-	23,247,973	7,074,852	843,505
-	-	-	-
-	-	-	-
-	-	-	-
-	-	-	-
-	-	-	-
-	-	-	-
-	-	467,563	243,805
-	44,678	1,693,028	599,700
-	-	-	-
-	-	-	-
-	-	-	-
-	-	-	-
-	-	-	-
-	-	-	-
-	-	-	-
-	-	608,767	-
-	9,531,730	1,449,536	-
-	13,671,565	2,855,958	-

附表十一 進 港 貨 物 分 類 (按碼頭) (續完)

單位：公噸

年 (月) 別 Year and Month	化 學 品 Chemical Products			基 本 金 屬 Basic Metal	
	肥 料 Fertilizer	動 植 物 性 油 脂 Animal & Vegetable Grease	其 他 Others	鋼 鐵 Iron & Steel	廢 鐵 Iron & Steel Scrap
2001	-	-	494,438	-	-
2002	-	-	995,195	-	-
2003	-	-	1,442,304	-	-
2004	-	-	1,106,384	-	-
2005	-	-	1,473,730	-	-
2006	-	-	1,586,764	-	-
2007	-	-	2,142,587	-	-
2008	-	-	1,595,062	-	-
2009	-	-	1,416,933	-	-
2010	-	-	1,804,664	-	-
2011	-	-	1,470,673	-	-
2012	-	-	1,566,479	-	-
2013	-	-	1,789,996	-	-
東1碼頭	-	-	-	-	-
東2碼頭	-	-	-	-	-
東3碼頭	-	-	-	-	-
東4碼頭	-	-	-	-	-
東5碼頭	-	-	-	-	-
東6碼頭	-	-	291,812	-	-
東7碼頭	-	-	-	-	-
東8碼頭	-	-	-	-	-
東9N/S碼頭	-	-	161,361	-	-
東10N/S碼頭	-	-	256,245	-	-
北1碼頭	-	-	504,450	-	-
北2碼頭	-	-	518,012	-	-
北5碼頭	-	-	7,022	-	-
北6碼頭	-	-	-	-	-
北7碼頭	-	-	51,094	-	-
西1碼頭	-	-	-	-	-
西2碼頭	-	-	-	-	-
西3碼頭	-	-	-	-	-

附表十二 出 港 貨 物 分 類 (按 月)

年 (月) 別	總 計	礦 產 品 Minerals		
		煤	鐵 礦 砂	土、石、砂礫
Year and Month	Total	Coal & Coke	Iron Ore	Clay, Stone, Sand & Gravel
2001	4,179,533	-	-	-
2002	7,918,726	-	-	50
2003	10,670,493	-	-	-
2004	12,732,277	-	-	-
2005	16,238,492	-	-	-
2006	17,106,715	-	-	-
2007	20,397,076	-	-	-
2008	21,777,306	-	-	-
2009	22,099,608	-	-	-
2010	19,812,747	-	-	-
2011	17,482,614	-	-	-
2012	19,471,923	-	-	-
2013	21,502,603	-	-	-
一 月(Jan.)	2,091,147	-	-	-
二 月(Feb.)	1,922,032	-	-	-
三 月(Mar.)	1,851,370	-	-	-
四 月(Apr.)	1,397,437	-	-	-
五 月(May)	1,615,343	-	-	-
六 月(June)	1,579,622	-	-	-
七 月(July)	1,610,282	-	-	-
八 月(Aug.)	1,990,878	-	-	-
九 月(Sep.)	1,781,313	-	-	-
十 月(Oct.)	1,829,103	-	-	-
十一 月(Nov.)	1,905,118	-	-	-
十二 月(Dec.)	1,928,958	-	-	-

資料來源：葵寮工業區專用港管理股份有限公司

Table 12. Classification of Imports (by Month)

礦 產 品			非 金 屬 礦 物 製 品	
Minerals			Non-metalic Mineral Products	
硫 磺	粗 鹽	其 他	汽、柴、燃料油	其 他
Sulphur	Salt	Others	Gasoline, Diesel, Fuel Oil	Others
-	-	-	1,393,605	647,888
65,426	-	-	3,987,163	1,267,453
103,316	-	-	6,785,856	646,945
188,950	-	-	9,192,127	518,246
238,759	-	-	11,584,666	713,673
260,700	-	-	11,773,715	690,876
295,000	-	-	12,649,199	943,722
334,460	-	-	12,890,872	1,171,169
367,100	-	-	13,381,360	1,103,819
272,305	-	-	10,973,773	1,313,684
154,150	-	-	9,802,513	1,378,095
234,700	-	-	11,144,210	1,569,148
317,850	-	-	11,341,593	1,869,705
52,050	-	-	1,258,334	163,897
36,500	-	-	1,090,257	152,934
16,500	-	-	912,804	171,831
16,500	-	-	734,478	152,075
16,500	-	-	798,239	167,316
17,000	-	-	748,263	160,961
31,050	-	-	890,874	147,273
14,700	-	-	1,130,927	119,128
33,000	-	-	986,344	169,470
36,500	-	-	915,281	143,190
33,000	-	-	999,974	128,175
14,550	-	-	875,818	193,455

單位：公噸

Unit : M.T.

附表十二 出 港 貨 物 分 類 (按 月) (續 完)

單位：公噸

年 (月) 別 Year and Month	化 學 品 Chemical Products			基 本 金 屬 Basic Metal	
	肥 料 Fertilizer	動 植 物 性 油 脂 Animal & Vegetable Grease	其 他 Others	鋼 鐵 Iron & Steel	廢 鐵 Iron & Steel Scrap
2001	-	-	2,128,272	-	-
2002	-	-	2,598,634	-	-
2003	-	-	3,128,210	-	-
2004	-	-	2,809,358	-	-
2005	-	-	3,663,692	-	-
2006	-	2,709	4,329,830	-	-
2007	-	3,226	6,201,806	-	-
2008	-	2,089	7,183,434	-	-
2009	-	155	7,097,754	-	-
2010	-	396	7,158,364	-	-
2011	-	92	6,028,802	-	-
2012	-	-	6,353,201	-	-
2013	-	262	7,336,868	-	-
一 月 (Jan.)	-	-	601,249	-	-
二 月 (Feb.)	-	70	608,904	-	-
三 月 (Mar.)	-	-	729,991	-	-
四 月 (Apr.)	-	17	488,637	-	-
五 月 (May)	-	70	614,326	-	-
六 月 (June)	-	35	616,477	-	-
七 月 (July)	-	-	513,401	-	-
八 月 (Aug.)	-	35	694,985	-	-
九 月 (Sep.)	-	-	574,649	-	-
十 月 (Oct.)	-	-	639,993	-	-
十 一 月 (Nov.)	-	35	657,910	-	-
十 二 月 (Dec.)	-	-	596,346	-	-

資料來源：麥寮工業區專用港管理股份有限公司

Table 12. Classification of Imports (by Month)

Unit : M.T.

基本金屬 Basic Metal		金屬製品 Metal Products			其他什貨
其他 Others	機件 Grude Oil	電器機械器材 Electrical Machinery, Apparatus	其他 Others	General Merchandise	
9,768	-	-	-	-	
-	-	-	-	-	
-	-	-	-	6,166	
-	5,132	-	-	18,464	
-	2,591	-	1,820	33,291	
-	374	-	-	48,511	
1,002	493	-	-	302,629	
-	1,613	-	-	193,669	
-	2,064	-	-	147,356	
-	196	-	-	94,029	
-	-	-	-	118,962	
-	1,266	-	-	169,398	
-	4,188	-	-	632,137	
-	1,384	-	-	14,233	
-	-	-	-	33,367	
-	-	-	-	20,244	
-	209	-	-	5,521	
-	795	-	-	18,097	
-	333	-	-	36,553	
-	-	-	-	27,684	
-	-	-	-	31,103	
-	-	-	-	17,850	
-	557	-	-	93,582	
-	811	-	-	85,213	
-	99	-	-	248,690	

附表十三 出 港 貨 物 分 類 (按碼頭)

單位：計費噸

年 (月) 別	礦 產 品						非金屬礦物製品	
	總 計	煤	土、石、砂礫	硫 磺	粗 鹽	其 他	汽、柴、燃料油	其 他
Year and Month	Total	Coal & Coke	Clay, Stone, Sand & Gravel	Sulphur	Salt	Others	Gasoline, Diesel, Fuel Oil	Others
2001	4,179,533	-	-	-	-	-	1,393,605	647,888
2002	7,918,726	-	50	65,426	-	-	3,987,163	1,267,453
2003	10,670,493	-	-	103,316	-	-	6,785,856	646,945
2004	13,893,900	-	-	172,921	-	-	9,719,518	317,376
2005	16,918,407	-	-	220,731	-	-	12,030,309	504,290
2006	17,106,715	-	-	260,700	-	-	11,773,715	690,876
2007	20,397,078	-	-	295,000	-	-	12,649,200	943,722
2008	21,777,307	-	-	334,460	-	-	12,890,870	1,171,168
2009	22,099,610	-	-	367,100	-	-	13,381,359	1,103,821
2010	19,812,747	-	-	272,305	-	-	10,973,772	1,313,685
2011	17,482,611	-	-	154,150	-	-	9,802,512	1,378,095
2012	19,471,927	-	-	234,700	-	-	11,144,213	1,569,147
2013	21,502,604	-	-	317,850	-	-	11,341,592	1,866,782
東1碼頭	879,135	-	-	317,850	-	-	-	-
東2碼頭	443,459	-	-	-	-	-	-	-
東3碼頭	-	-	-	-	-	-	-	-
東4碼頭	-	-	-	-	-	-	-	-
東5碼頭	535,400	-	-	-	-	-	-	468,700
東6碼頭	1,658,025	-	-	-	-	-	68,899	88,006
東7碼頭	3,824,098	-	-	-	-	-	2,620,741	532,415
東8碼頭	3,135,269	-	-	-	-	-	2,765,829	167,990
東9N/S碼頭	1,023,143	-	-	-	-	-	-	310,131
東10N/S碼頭	1,611,366	-	-	-	-	-	231,652	36,225
北1碼頭	788,847	-	-	-	-	-	-	-
北2碼頭	748,559	-	-	-	-	-	-	-
北5碼頭	443,785	-	-	-	-	-	-	263,315
北6碼頭	68,540	-	-	-	-	-	-	-
北7碼頭	580,866	-	-	-	-	-	-	-
西1碼頭	3,425,792	-	-	-	-	-	3,318,151	-
西2碼頭	2,336,320	-	-	-	-	-	2,336,320	-
西3碼頭	-	-	-	-	-	-	-	-

資料來源：麥寮工業區專用港管理股份有限公司

二、棧埠

附表十四 本港裝卸業者營運實績 (依公司別)

單位：計費噸

年(月)別	總計	台塑公司	南亞公司	台化公司	台塑石化	麥寮汽電
Year and Month	Total	Formosa Plastics Corp.	Nan Ya Plastics Corp.	Formosa Chemicals & Fiber Corp.	Formosa Petro Chemical Corp.	Mailiao Power Corp.
2001	26,041,428	1,734,837	361,460	846,347	13,299,008	9,570,802
2002	34,030,979	2,148,008	353,687	1,341,265	21,442,904	8,318,320
2003	41,397,426	2,674,789	512,050	1,276,821	31,976,683	4,264,920
2004	51,509,127	2,878,148	951,710	1,165,175	41,212,559	4,595,606
2005	58,911,212	3,300,788	969,961	1,748,139	47,116,736	4,931,050
2006	60,204,848	4,180,307	1,008,421	1,834,079	47,282,406	5,016,540
2007	68,374,622	4,233,728	1,554,613	2,997,363	53,313,822	5,289,865
2008	69,806,005	4,902,732	1,751,868	2,956,767	55,066,752	4,243,481
2009	70,159,727	4,154,754	1,672,748	2,806,740	55,677,975	5,130,831
2010	68,089,719	4,323,088	1,720,225	3,228,921	52,997,135	4,903,530
2011	60,375,984	3,786,476	1,467,225	2,582,020	46,714,988	4,876,760
2012	64,590,642	3,765,659	1,424,195	2,817,131	50,200,160	5,314,721
2013	70,293,571	3,856,530	1,540,390	3,693,834	55,097,906	4,785,828
一月(Jan.)	6,464,575	270,727	153,444	340,396	5,275,746	319,879
二月(Feb.)	5,721,867	278,349	130,857	268,770	4,534,833	418,458
三月(Mar.)	5,678,533	392,177	125,701	294,755	4,616,309	144,753
四月(Apr.)	6,041,056	262,366	95,022	273,458	4,849,605	480,373
五月(May)	5,121,288	411,447	109,578	309,648	3,896,358	284,204
六月(June)	4,635,086	337,101	80,253	321,688	3,526,083	252,739
七月(July)	6,417,614	189,984	119,125	327,619	4,770,482	892,968
八月(Aug.)	6,545,095	459,043	152,559	313,905	5,131,254	382,302
九月(Sep.)	5,188,455	271,775	150,268	281,205	4,214,111	128,937
十月(Oct.)	6,605,383	362,915	143,451	340,244	4,928,431	710,231
十一月(Nov.)	5,771,827	297,195	139,874	314,818	4,127,897	768,294
十二月(Dec.)	6,102,792	323,451	140,258	307,328	5,226,797	2,690

資料來源：麥寮工業區專用港管理股份有限公司

二、Stevedoring&Warehousing

Table 14. Volume of Cargoes Handled by Stevedoring & Warehousing Companies

Unit : Revenue Ton

中塑油品	大連化工	長春樹脂	南中石化	台塑重工	台塑旭纖	台灣醋酸	台塑光電	其他
Simosa Oil Corp Ltd.	Dairen Chemical Corp.	Chang Chun Plastics Corp.	Nan Chung Petrochemical Corp.	Formosa Heavy Industries Corp.	Formosa Asahi Spandex CO. Ltd	Formosa Bp Chemicals Corp.	Formosa Plasma Display Corp.	Others
-	92,461	-	126,745	8,868	-	-	-	900
71,138	194,893	23,675	137,089	-	-	-	-	-
248,154	247,102	24,360	164,305	6,166	-	-	2,076	-
226,464	253,777	32,091	185,023	5,604	2,231	739	-	-
350,600	253,088	37,055	182,361	7,173	5,313	8,948	-	-
146,043	404,607	39,792	132,759	2,430	3,367	154,097	-	-
138,281	443,190	104,759	149,693	1,820	2,829	144,659	-	-
97,368	391,405	73,683	130,357	1,887	2,423	187,282	-	-
91,057	296,743	75,432	74,193	2,060	2,405	174,789	-	-
162,523	378,265	95,141	98,110	196	2,458	180,127	-	-
178,997	282,496	249,082	54,270	3,592	1,087	178,991	-	-
203,332	289,417	337,218	80,215	3,324	638	154,632	-	-
262,986	245,132	488,945	56,413	4,640	1,360	259,607	-	-
22,162	15,042	30,259	10,876	1,384	47	24,613	-	-
16,229	27,805	21,478	5,941	205	47	18,895	-	-
24,311	32,314	25,458	-	-	122	22,633	-	-
20,912	20,308	9,488	5,943	345	47	23,189	-	-
21,588	24,923	32,442	1,998	1,005	95	28,002	-	-
22,061	21,239	54,595	7,814	333	94	11,086	-	-
10,234	13,003	60,390	1,980	-	222	31,607	-	-
14,027	16,603	49,272	3,987	-	154	21,989	-	-
31,332	20,110	71,286	1,950	-	123	17,358	-	-
27,535	20,529	36,569	6,990	557	167	27,764	-	-
27,723	16,043	53,049	2,977	811	107	23,039	-	-
24,872	17,213	44,659	5,957	-	135	9,432	-	-

附表十五 裝卸貨物噸量

單位：計費噸

年(月)別	裝卸貨物							
	總計	合計	什貨	管道	貨櫃	散貨	其他散裝	其他
Year and Month	Total	Total	General Cargoes	Pipe	Containers	Bulk Cargoes	Others Cargoes in Bulk	Others
2001	26,041,428	4,178,784	293,580	3,527,883	357,321	-	-	-
2002	34,030,979	7,918,677	224,834	6,774,926	853,491	65,426	-	-
2003	41,397,426	10,670,493	200,319	9,425,168	941,690	-	103,316	-
2004	51,509,126	13,893,898	78,055	12,605,891	1,037,031	-	172,921	-
2005	58,911,212	16,918,407	135,989	15,627,469	934,218	-	220,731	-
2006	60,204,848	17,501,588	172,710	16,172,854	882,627	-	273,397	-
2007	68,374,622	20,373,429	290,359	18,885,774	924,074	-	273,222	-
2008	69,806,005	21,665,723	406,906	20,187,051	624,626	-	447,140	-
2009	70,159,727	21,639,950	440,360	20,017,457	623,627	-	558,506	-
2010	68,089,719	19,843,095	515,846	18,270,920	589,240	-	467,089	-
2011	60,375,984	17,506,100	515,992	16,255,605	339,266	-	395,237	-
2012	64,590,642	19,151,873	373,823	18,042,618	280,487	-	454,945	-
2013	70,293,571	21,078,215	101,910	19,609,639	550,807	-	815,859	-
一月(Jan.)	6,464,575	2,188,609	24,384	2,003,140	53,437	-	107,648	-
二月(Feb.)	5,721,867	1,879,300	10,205	1,765,655	38,949	-	64,491	-
三月(Mar.)	5,678,533	1,749,424	14,000	1,635,012	41,923	-	58,489	-
四月(Apr.)	6,041,056	1,366,168	27,845	1,220,712	45,426	-	72,185	-
五月(May)	5,121,288	1,613,432	16,505	1,483,302	55,881	-	57,744	-
六月(June)	4,635,086	1,533,164	333	1,420,394	60,451	-	51,986	-
七月(July)	6,417,614	1,532,246	-	1,407,742	51,519	-	72,985	-
八月(Aug.)	6,545,095	1,931,747	5,055	1,821,451	48,554	-	56,687	-
九月(Sep.)	5,188,455	1,729,500	2,215	1,610,421	34,881	-	81,983	-
十月(Oct.)	6,605,383	1,785,069	557	1,668,331	33,506	-	82,675	-
十一月(Nov.)	5,771,827	1,904,402	811	1,806,079	44,517	-	52,995	-
十二月(Dec.)	6,102,792	1,865,154	-	1,767,400	41,763	-	55,991	-

資料來源：麥寮工業區專用港管理股份有限公司

Table 15. Volume of Cargoes Handled

Unit : Revenue Ton

卸 貨							
Unloading							
合 計	散貨-工鹽	散貨-燃煤	其他散裝	管 道	什 貨	貨 櫃	其 他
Total	Salt	Coal	Other Cargoes in Bulk	Pipe	General Cargoes	Containers	Others
21,862,644	809,479	9,550,634	71,672	11,404,239	26,620	-	-
26,112,302	864,124	8,312,020	111,771	16,789,864	34,523	-	-
30,726,933	1,057,068	9,186,479	71,739	20,383,154	26,417	2,076	-
37,615,228	1,267,204	11,669,042	235,055	24,299,356	144,571	-	-
41,992,805	1,306,192	12,321,246	329,703	27,983,648	52,016	-	-
42,703,260	1,817,708	12,683,935	405,580	27,746,569	49,468	-	-
48,001,193	1,698,714	14,052,202	458,389	31,755,007	36,881	-	-
48,140,282	2,229,605	13,469,664	443,998	31,991,580	5,435	-	-
48,519,777	1,653,261	13,642,516	338,586	32,861,109	24,305	-	-
48,246,624	1,827,364	13,290,129	365,791	32,734,353	28,987	-	-
42,869,884	1,861,659	12,711,049	306,936	27,964,963	25,277	-	-
45,438,769	1,721,704	13,247,936	339,560	30,105,210	24,359	-	-
49,215,356	1,791,615	14,104,186	128,638	33,163,405	27,512	-	-
4,275,966	145,206	1,142,955	-	2,986,808	997	-	-
3,842,567	117,593	941,300	-	2,783,674	-	-	-
3,929,109	143,521	487,136	23,311	3,272,940	2,201	-	-
4,674,888	117,477	2,000,405	-	2,553,744	3,262	-	-
3,507,856	215,464	1,232,497	23,320	2,033,814	2,761	-	-
3,101,922	117,635	417,017	23,514	2,543,756	-	-	-
4,885,368	68,247	2,031,214	23,497	2,757,052	5,358	-	-
4,613,348	247,771	1,012,102	23,496	3,327,769	2,210	-	-
3,458,955	147,249	882,612	-	2,423,602	5,492	-	-
4,820,314	139,228	1,844,347	11,500	2,824,658	581	-	-
3,867,425	117,680	1,243,755	-	2,503,474	2,516	-	-
4,237,638	214,544	868,846	-	3,152,114	2,134	-	-

附表十六 裝卸貨物效率

年(月)別 Year and Month	合 計 Total		散 貨-工 鹽 Bulk Cargoes		散 貨-燃 煤 Bulk Cargoes		其 他 散 裝 Other Cargoes in Bulk	
	裝量/工時	卸量/工時	裝量/工時	卸量/工時	裝量/工時	卸量/工時	裝量/工時	卸量/工時
	V./H.	V./H.	V./H.	V./H.	V./H.	V./H.	V./H.	V./H.
2001	424	502	-	745	-	1,165	-	256
2002	445	573	-	839	-	1,463	-	255
2003	384	669	-	835	-	1,705	297	421
2004	319	591	-	800	-	1,698	279	223
2005	334	552	-	694	-	1,491	313	224
2006	313	549	-	705	-	1,511	278	216
2007	318	622	-	758	-	1,666	292	406
2008	321	714	-	757	-	1,849	274	423
2009	315	696	-	757	-	1,837	271	412
2010	320	674	-	762	-	1,770	258	371
2011	321	682	-	759	-	1,781	261	411
2012	318	694	-	760	-	1,800	268	396
2013	330	684	-	762	-	1,741	268	392
一 月(Jan.)	323	710	-	751	-	1,812	270	-
二 月(Feb.)	320	646	-	772	-	1,801	265	-
三 月(Mar.)	322	659	-	755	-	1,795	269	401
四 月(Apr.)	323	684	-	770	-	1,683	265	-
五 月(May)	327	644	-	765	-	1,710	271	395
六 月(June)	322	706	-	766	-	1,712	269	402
七月(July)	364	637	-	750	-	1,699	260	387
八月(Aug.)	332	644	-	755	-	1,705	277	390
九月(Sep.)	326	711	-	771	-	1,786	262	-
十月(Oct.)	326	775	-	760	-	1,751	270	377
十一月(Nov.)	320	702	-	758	-	1,742	265	-
十二月(Dec.)	356	695	-	770	-	1,698	275	-

資料來源：麥寮工業區專用港管理股份有限公司

Table 16. Efficiency of Cargoes Handled

管 道		什 貨		貨 櫃		其 他	
Pipe		General Cargoes		Containers		Others	
裝量/工時	卸量/工時	裝量/工時	卸量/工時	裝量/工時	卸量/工時	裝量/工時	卸量/工時
V./H.	V./H.	V./H.	V./H.	V./H.	V./H.	V./H.	V./H.
693	650	155	170	-	26	-	-
734	673	156	178	-	32	-	-
681	639	174	169	-	32	-	-
782	623	171	127	29	38	-	-
784	624	163	145	35	44	-	-
759	625	162	130	37	46	-	-
741	631	186	152	34	43	-	-
735	614	235	190	35	45	-	-
735	616	222	318	33	44	-	-
746	621	214	240	33	44	-	-
754	635	218	322	33	43	-	-
752	628	218	316	32	44	-	-
772	624	225	325	32	43	-	-
770	621	221	323	32	43	-	-
750	610	230	-	33	45	-	-
759	622	228	335	33	43	-	-
771	615	225	310	32	41	-	-
775	620	229	332	32	42	-	-
769	609	215	-	33	42	-	-
801	614	-	329	31	43	-	-
798	640	221	333	33	43	-	-
779	633	231	319	33	45	-	-
770	622	232	320	32	43	-	-
765	649	215	321	33	42	-	-
760	632	-	330	32	45	-	-

附表十七 貨櫃裝卸量

單位：貨櫃：個
貨物：公噸

年 (月) 別	總計		進 口			
	Grand Total		合 計		20 呎	
	櫃 數 No. of Container	TEU	Total		20 Ft.	
			實 櫃 Loaded Container	空 櫃 Empty Container	實 櫃 Loaded Container	空 櫃 Empty Container
2001	17,903	21,440	-	17,903	-	14,366
2002	39,471	47,070	-	39,471	-	31,872
2003	46,649	57,208	396	46,253	1	36,089
2004	48,670	59,576	-	48,670	-	37,764
2005	43,059	54,174	-	43,059	-	31,944
2006	42,729	53,306	-	42,729	-	32,152
2007	46,338	54,336	-	46,338	-	38,340
2008	30,808	36,672	-	30,808	-	24,944
2009	31,749	37,254	-	31,749	-	26,244
2010	29,096	34,848	-	29,096	-	23,344
2011	17,489	20,659	-	17,489	-	14,319
2012	13,923	16,457	-	13,923	-	11,389
2013	27,472	34,704	-	27,472	-	20,240
一 月(Jan.)	3,362	4,042	-	3,362	-	2,682
二 月(Feb.)	1,585	1,949	-	1,585	-	1,221
三 月(Mar.)	2,219	3,088	-	2,219	-	1,350
四 月(Apr.)	2,148	2,702	-	2,148	-	1,594
五 月(May)	2,721	3,287	-	2,721	-	2,155
六 月(June)	3,315	4,126	-	3,315	-	2,504
七 月(July)	2,002	2,554	-	2,002	-	1,450
八 月(Aug.)	2,282	2,906	-	2,282	-	1,658
九 月(Sep.)	2,020	2,555	-	2,020	-	1,485
十 月(Oct.)	1,624	2,068	-	1,624	-	1,180
十一月(Nov.)	2,365	3,052	-	2,365	-	1,678
十二月(Dec.)	1,829	2,375	-	1,829	-	1,283

資料來源：麥寮工業區專用港管理股份有限公司。

Table 17. Number of Containers Handled

						Cargo - M.T.	
Incoming						貨物噸數	
35 呎 35 Ft.		40 呎 40 Ft.		45 呎 45 Ft.			
實 櫃 Loaded Container	空 櫃 Empty Container	實 櫃 Loaded Container	空 櫃 Empty Container	實 櫃 Loaded Container	空 櫃 Empty Container	Cargo	Tonnage
-	-	-	3,537	-	-	-	-
-	-	-	7,599	-	-	-	-
-	-	395	10,164	-	-	2,076	-
-	-	-	10,906	-	-	-	-
-	-	-	11,115	-	-	-	-
-	-	-	10,577	-	-	-	-
-	-	-	7,998	-	-	-	-
-	-	-	5,864	-	-	-	-
-	-	-	5,505	-	-	-	-
-	-	-	5,752	-	-	-	-
-	-	-	3,170	-	-	-	-
-	-	-	2,534	-	-	-	-
-	-	-	7,232	-	-	-	-
-	-	-	680	-	-	-	-
-	-	-	364	-	-	-	-
-	-	-	869	-	-	-	-
-	-	-	554	-	-	-	-
-	-	-	566	-	-	-	-
-	-	-	811	-	-	-	-
-	-	-	552	-	-	-	-
-	-	-	624	-	-	-	-
-	-	-	535	-	-	-	-
-	-	-	444	-	-	-	-
-	-	-	687	-	-	-	-
-	-	-	546	-	-	-	-

附表十七 貨櫃裝卸量(續完)

單位：貨櫃：個
貨物：公噸

年 (月) 別	總計		出 口			
	Grand Total		合 計 Total		20 呎 20 Ft.	
	櫃 數 No. of Container	TEU	實 櫃 Loaded Container	空 櫃 Empty Container	實 櫃 Loaded Container	空 櫃 Empty Container
2001	18,507	22,386	18,507	-	14,628	-
2002	44,282	52,638	44,282	-	35,926	-
2003	50,593	61,480	50,567	26	39,691	15
2004	52,876	64,790	52,803	73	40,934	28
2005	47,059	59,058	47,059	-	35,060	-
2006	45,430	55,804	45,046	384	34,813	243
2007	47,856	56,000	47,771	85	39,682	30
2008	31,908	38,113	31,855	53	25,662	41
2009	31,860	37,800	31,860	-	25,920	-
2010	30,463	36,761	30,463	-	24,165	-
2011	17,297	20,678	17,297	-	13,916	-
2012	13,958	16,317	13,958	-	11,599	-
2013	28,068	35,546	28,068	-	20,590	-
一 月(Jan.)	2,774	3,408	2,774	-	2,140	-
二 月(Feb.)	2,029	2,495	2,029	-	1,563	-
三 月(Mar.)	2,052	2,746	2,052	-	1,358	-
四 月(Apr.)	2,330	2,925	2,330	-	1,735	-
五 月(May)	2,834	3,527	2,834	-	2,141	-
六 月(June)	3,001	3,868	3,001	-	2,134	-
七 月(July)	2,705	3,246	2,705	-	2,164	-
八 月(Aug.)	2,510	3,162	2,510	-	1,858	-
九 月(Sep.)	1,755	2,254	1,755	-	1,256	-
十 月(Oct.)	1,689	2,224	1,689	-	1,154	-
十一月(Nov.)	2,241	2,916	2,241	-	1,566	-
十二月(Dec.)	2,148	2,775	2,148	-	1,521	-

資料來源：麥寮工業區專用港管理股份有限公司。

Table 17. Number of Containers Handled

						Cargo - M.T.	
Outgoing						貨物噸數	
35 呎 35 Ft.		40 呎 40 Ft.		45 呎 45 Ft.			
實 櫃 Loaded Container	空 櫃 Empty Container	實 櫃 Loaded Container	空 櫃 Empty Container	實 櫃 Loaded Container	空 櫃 Empty Container	Cargo	Tonnage
-	-	3,879	-	-	-	357,320	
-	-	8,356	-	-	-	853,490	
-	-	10,876	11	-	-	941,690	
-	-	11,869	45	-	-	1,037,031	
-	-	11,999	-	-	-	934,218	
-	-	10,233	141	-	-	882,627	
-	-	8,089	55	-	-	924,074	
-	-	6,193	12	-	-	624,629	
-	-	5,940	-	-	-	623,627	
-	-	6,298	-	-	-	589,239	
-	-	3,381	-	-	-	339,264	
-	-	2,359	-	-	-	280,487	
-	-	7,478	-	-	-	550,806	
-	-	634	-	-	-	53,437	
-	-	466	-	-	-	38,949	
-	-	694	-	-	-	41,923	
-	-	595	-	-	-	45,425	
-	-	693	-	-	-	55,881	
-	-	867	-	-	-	60,451	
-	-	541	-	-	-	51,519	
-	-	652	-	-	-	48,554	
-	-	499	-	-	-	34,881	
-	-	535	-	-	-	33,506	
-	-	675	-	-	-	44,517	
-	-	627	-	-	-	41,763	

附表十八 倉儲業務狀況

單位：公噸

年(月)別	期末倉棧總量 (A) Total Volume of Warehouse at the End of Year	本期進倉量 (B) Receiving	本期進倉量 (C)(不包括存放 貨櫃場部份) Receiving (Excluding Volume of Cargoes Stored in Container Vard	本期出倉量 Delivery	期末進倉量 (D) Remaining
Year and Month	(噸) (Ton)	(噸) (Ton)	(噸) (Ton)	(噸) (Ton)	(噸) (Ton)
2001					
2002					
2003					
2004					
2005					
2006					
2007					
2008					
2009					
2010					
2011					
2012					
2013					
一月(Jan.)					
二月(Feb.)					
三月(Mar.)					
四月(Apr.)					
五月(May)					
六月(June)					
七月(July)					
八月(Aug.)					
九月(Sep.)					
十月(Oct.)					
十一月(Nov.)					
十二月(Dec.)					

資料來源：麥寮工業區專用港管理股份有限公司

Table 18. Volume of Warehousing

Unit : M.T.

本期延日存倉量(E) (不包括存放露置場及貨櫃場部份) Storage (Including Volume of Cargoes Stored in Open Space)	本期延日存倉量(F) (不包括存放露置場及貨櫃場部份) Storage (Excluding Volume of Cargoes Stored in Open Space)	倉棧平均使用率 E / (Ax當月天數)	貨物平均存倉日數 E / (前一期之D+B) Average Cargo Remaining Days Per Ton	貨物裝卸量(不包括管道、貨櫃裝卸)(G) Volume of Cargoes Handled(Excluding Pipe & Container Cargoes)	貨物進倉比率 C / G Percentage of Cargoes Stored
(噸日) (Ton - Day)	(噸日) (Ton - Day)	%	(日) (Day)	(噸) (Ton)	%

三、航政監理
附表十九 工業專用港區域海事案件

單位：艘數

年(月)別 Year and Month	Vessels of Ship - Wreck									
	合計 Total	碰 撞	觸 礁 或 擱 淺	失 火	爆 炸	洩 漏	傾 覆	機 械 故 障	非 常 故 障	其 他
2001										
2002										
2003	2	-	-	-	-	-	-	1	-	1
2004	3	1	-	-	-	1	-	-	1	-
2005	8	6	-	-	-	-	-	-	-	2
2006	3	1	-	-	-	-	-	-	-	2
2007	5	-	1	-	-	-	-	2	-	2
2008	4	3	-	-	-	-	-	-	-	1
2009	7	2	1	-	-	1	-	-	-	3
2010	5	3	-	-	-	-	-	1	-	1
2011	8	4	-	-	-	1	-	1	2	-
2012	-	-	-	-	-	-	-	-	-	-
2013	1	1	-	-	-	-	-	-	-	-
一 月(Jan.)	-	-	-	-	-	-	-	-	-	-
二 月(Feb.)	-	-	-	-	-	-	-	-	-	-
三 月(Mar.)	-	-	-	-	-	-	-	-	-	-
四 月(Apr.)	1	1	-	-	-	-	-	-	-	-
五 月(May.)	-	-	-	-	-	-	-	-	-	-
六 月(June.)	-	-	-	-	-	-	-	-	-	-
七 月(July.)	-	-	-	-	-	-	-	-	-	-
八 月(Aug.)	-	-	-	-	-	-	-	-	-	-
九 月(Sep.)	-	-	-	-	-	-	-	-	-	-
十 月(Oct.)	-	-	-	-	-	-	-	-	-	-
十一 月(Nov.)	-	-	-	-	-	-	-	-	-	-
十二 月(Dec.)	-	-	-	-	-	-	-	-	-	-

四、財務
附表二十 營 業 總 收 入

單位：新台幣元

年 (月) 別	7=5+6	5=1+2+3+4	1
Year and Month	總 計 Grand Total	營 業 收 入 Operating Revenue	港 灣 設 施 使 用 收 入 Facilities Usage Revenue
2001	1,713,532,506	1,503,529,918	678,921,665
2002	2,114,443,106	1,931,886,166	969,599,978
2003	2,480,584,209	2,417,832,652	1,227,143,023
2004	3,062,894,485	2,988,776,216	1,511,159,274
2005	3,356,493,634	3,285,882,302	1,666,146,703
2006	3,430,154,796	3,382,657,949	1,719,710,703
2007	4,209,976,723	3,993,368,414	1,982,687,717
2008	4,044,733,179	3,958,382,250	2,015,268,804
2009	4,141,160,700	3,954,892,930	2,017,722,074
2010	4,102,496,618	4,018,819,093	1,949,872,975
2011	3,666,667,917	3,570,620,369	1,732,244,013
2012	4,109,789,714	3,759,718,826	1,829,916,856
2013	4,801,184,935	4,360,961,096	2,045,579,769
一 月(Jan.)	410,817,533	406,797,895	208,053,256
二 月(Feb.)	347,509,049	343,795,600	169,666,331
三 月(Mar.)	385,717,938	363,707,645	175,937,980
四 月(Apr.)	365,082,866	358,286,922	163,883,579
五 月(May.)	621,722,779	332,676,336	143,678,419
六 月(June.)	357,881,614	331,654,745	146,727,708
七 月(July.)	363,983,788	356,311,563	170,517,391
八 月(Aug.)	406,382,801	402,194,272	185,790,384
九 月(Sep.)	367,380,283	343,374,978	158,177,747
十 月(Oct.)	416,635,837	404,024,687	186,193,327
十一 月(Nov.)	346,253,337	341,769,486	157,139,759
十二 月(Dec.)	411,817,110	376,366,967	179,813,888

資料來源：麥寮工業區專用港管理股份有限公司

四、Finance

Table 20. Total Operating Revenue

Unit : N T \$

2	3	4	6
港灣業務收入 Port Revenue	棧埠業務收入 Stevedoring & Warehousing Revenue	租金收入 Rent Revenue of Operating Assets	營業外收入 Non - Operating Revenue
129,158,163	695,450,090	-	210,002,588
149,644,590	812,641,598	-	182,556,940
163,040,374	1,027,649,255	-	62,751,557
190,961,727	1,286,655,215	-	74,118,269
210,673,015	1,409,062,584	-	70,611,332
224,626,821	1,438,320,425	-	47,496,847
279,545,337	1,731,135,360	-	216,608,309
269,659,269	1,673,454,177	-	86,350,929
271,211,173	1,665,959,683	-	186,267,770
273,834,416	1,795,111,702	-	83,677,525
262,261,469	1,576,114,887	-	96,047,548
258,964,607	1,670,837,363	-	350,070,888
307,969,369	2,007,411,958	-	440,223,839
30,838,978	167,905,661	-	4,019,638
24,816,162	149,313,107	-	3,713,449
26,748,103	161,021,562	-	22,010,293
24,940,049	169,463,294	-	6,795,944
23,802,985	165,194,932	-	289,046,443
22,810,720	162,116,317	-	26,226,869
25,182,806	160,611,366	-	7,672,225
26,006,425	190,397,463	-	4,188,529
24,561,776	160,635,455	-	24,005,305
27,128,020	190,703,340	-	12,611,150
24,634,930	159,994,797	-	4,483,851
26,498,415	170,054,664	-	35,450,143

附表二十一 營 業 總 支 出

單位：新台幣元

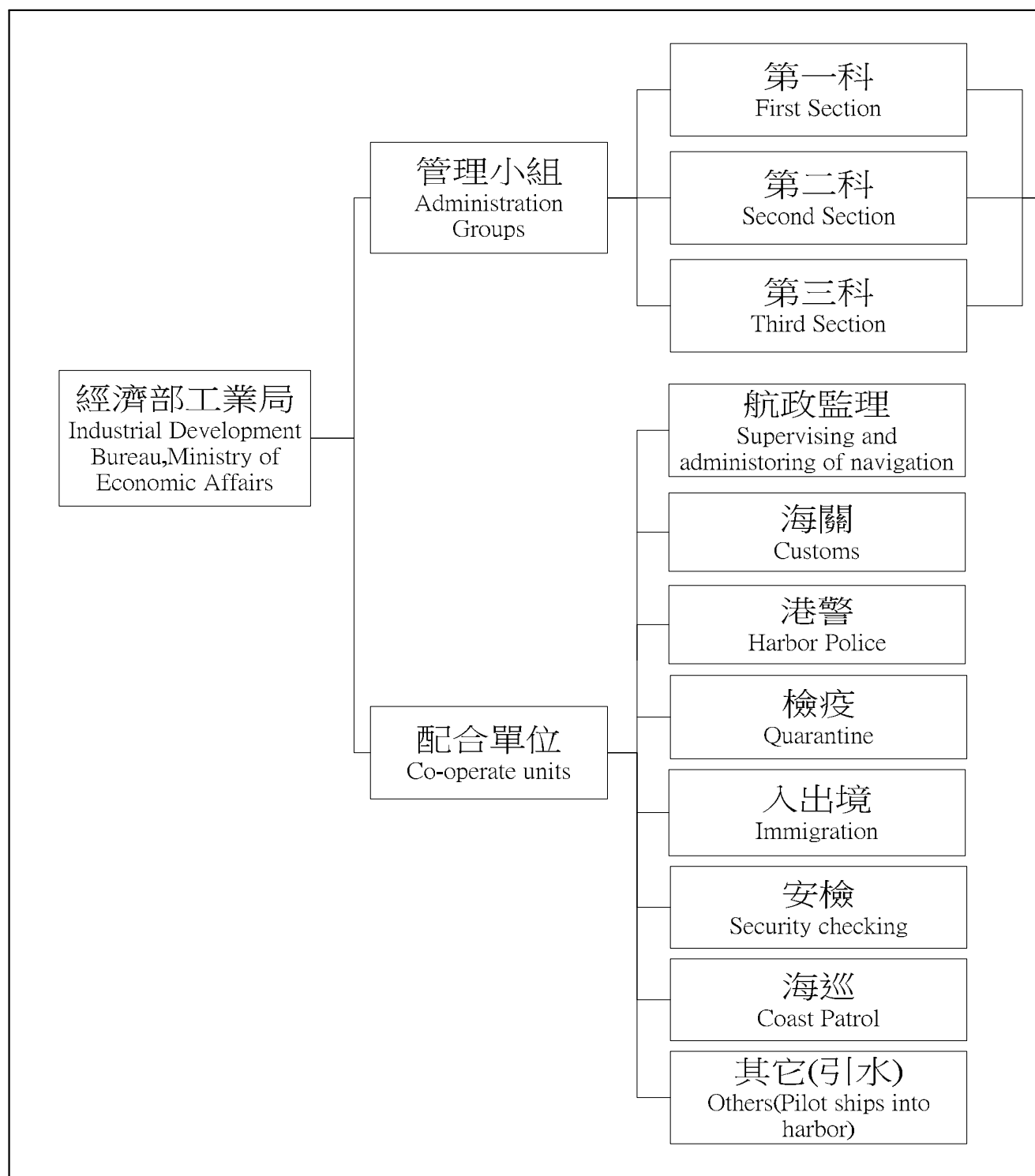
年 (月) 別	17=15+16	15=8+9+10+11+12+13+14	8	9	10
Year and Month	總 計 Grand Total	營 業 支 出 Operating Expense	港 灣 費 用 Port Expense	棧 埠 費 用 Stevedoring & Warehousing Expense	維 持 費 用 Command Expense
2001	1,342,041,944	1,007,047,993	-	633,034,287	-
2002	1,513,072,746	1,253,395,970	-	724,907,262	-
2003	1,776,135,585	1,542,378,958	489,572,751	846,578,123	-
2004	2,057,280,740	1,685,344,858	543,550,653	925,211,062	-
2005	1,828,340,397	1,750,994,466	576,109,936	981,350,944	-
2006	2,401,306,693	2,111,193,224	905,062,669	989,089,755	-
2007	2,550,049,377	2,367,194,764	944,246,643	1,106,659,306	-
2008	2,465,699,176	2,267,819,359	732,746,796	1,200,196,316	-
2009	2,423,886,449	2,372,903,738	912,031,004	1,239,716,920	-
2010	2,512,559,966	2,428,173,744	966,475,610	1,248,012,352	-
2011	2,547,996,901	2,481,267,557	996,579,878	1,272,738,738	-
2012	2,914,175,058	2,864,363,418	1,224,506,903	1,381,281,548	-
2013	2,729,549,234	2,685,362,167	991,543,147	1,450,379,947	-
一 月(Jan.)	241,278,014	237,275,817	80,118,512	138,665,895	-
二 月(Feb.)	214,344,128	210,543,061	84,875,242	107,808,070	-
三 月(Mar.)	233,619,185	229,756,870	79,405,296	129,984,864	-
四 月(Apr.)	225,395,783	221,695,758	91,357,785	110,791,682	-
五 月(May.)	247,921,747	244,249,173	95,240,481	126,876,158	-
六 月(June.)	236,221,399	232,706,822	91,592,317	111,096,996	-
七 月(July.)	234,601,138	231,048,370	89,572,753	121,588,159	-
八 月(Aug.)	239,557,612	235,478,152	77,165,669	137,943,861	-
九 月(Sep.)	209,151,667	205,414,398	73,392,026	114,952,976	-
十 月(Oct.)	216,663,852	212,917,863	72,714,818	123,271,084	-
十一 月(Nov.)	230,390,953	226,915,017	90,245,647	115,860,395	-
十二 月(Dec.)	200,403,756	197,360,866	65,862,601	111,539,807	-

資料來源：麥寮工業區專用港管理股份有限公司

Unit : N T \$

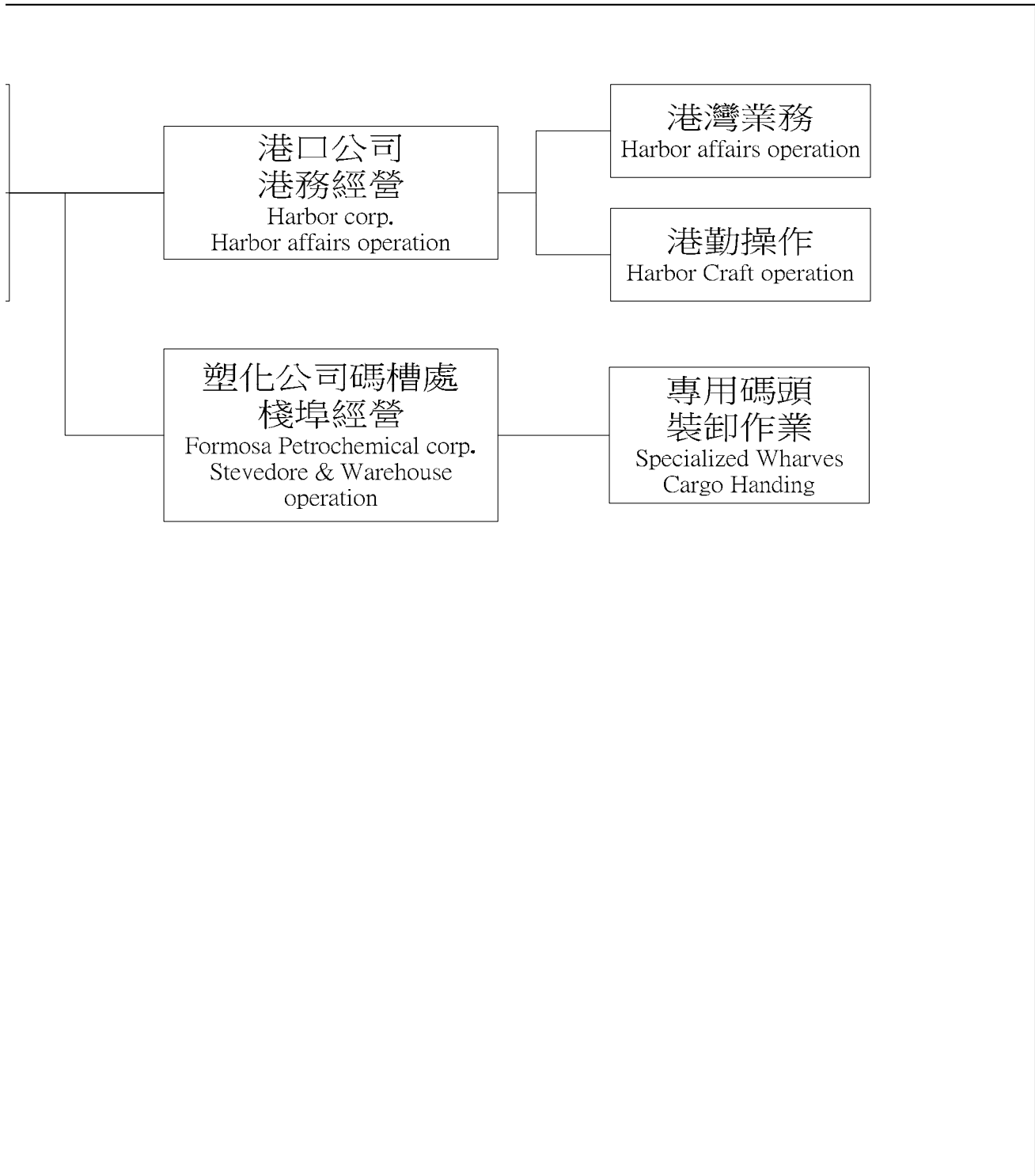
11	12	13	14	16	18=7-17
其他營業費用 Other Operating Expense	業務費用 Business Expense	管理費用 Administration Expense	土地租金 Rent Expense	營業外支出 Non - Operating Expense	盈餘 Surplus
-	295,506,644	78,507,062	-	334,993,951	371,490,562
-	382,578,274	145,910,434	-	259,676,776	601,370,360
107,508,794	-	98,719,290	-	233,756,627	704,448,624
96,915,734	-	119,667,409	-	371,935,882	1,005,613,745
68,003,627	-	102,325,331	23,204,628	77,345,931	1,528,153,237
61,356,778	20,059,866	112,419,528	23,204,628	290,113,469	1,028,848,103
150,551,995	-	142,532,192	23,204,628	182,854,613	1,659,927,346
146,131,160	-	165,540,459	23,204,628	197,879,817	1,579,034,003
75,257,373	-	122,693,813	23,204,628	50,982,711	1,717,274,251
53,041,412	-	137,439,742	23,204,628	84,386,222	1,589,936,652
48,003,391	-	140,740,922	23,204,628	66,729,344	1,118,671,016
49,479,058	-	185,891,281	23,204,628	49,811,640	1,195,614,656
47,853,475	-	172,380,970	23,204,628	44,187,067	2,071,635,701
4,561,224	-	11,996,467	1,933,719	4,002,197	169,539,519
4,277,168	-	11,648,862	1,933,719	3,801,067	133,164,921
4,786,325	-	13,646,666	1,933,719	3,862,315	152,098,753
4,364,038	-	13,248,534	1,933,719	3,700,025	139,687,083
4,504,834	-	15,693,981	1,933,719	3,672,574	373,801,032
4,039,323	-	24,044,467	1,933,719	3,514,577	121,660,215
4,252,001	-	13,701,738	1,933,719	3,552,768	129,382,650
4,464,883	-	13,970,020	1,933,719	4,079,460	166,825,189
3,121,593	-	12,014,084	1,933,719	3,737,269	158,228,616
3,368,281	-	11,629,961	1,933,719	3,745,989	199,971,985
3,005,261	-	15,869,995	1,933,719	3,475,936	115,862,384
3,108,544	-	14,916,195	1,933,719	3,042,890	211,413,354

五、組織與人事
附表二十二 港內各作業組織系統表



五、 Organization and Personnel matters

Table 22. Organization Chart



附表二十三 港內作業人數（依組織別）

單位：人

年 (底) 別 End of Year	總 計 Total		麥寮港管理小組 Mailiao Harbor Administration		民營事業 Harbor Operation Company	
	職員	工員	職員	工員	職員	工員
	Staff	Work Men	Staff	Work Men	Staff	Work Men
2001	402	6	4	6	38	-
2002	415	5	3	5	39	-
2003	455	5	2	5	39	-
2004	324	178	4	3	43	-
2005	313	191	10	-	43	-
2006	255	258	10	-	44	-
2007	279	268	9	-	41	-
2008	280	278	8	-	41	-
2009	249	316	8	-	42	-
2010	248	312	7	-	41	-
2011	272	328	7	-	41	-
2012	260	319	7	-	41	-
2013	252	350	7	1	40	-

Table 23. Number of Staff & Workmen of the Bureau and Branch Offices

Unit : Person

港灣作業機構 Marine Service Org.		棧埠作業機構 Marine Terminal Org.		船舶機械修造工廠 Ship & Machinery Works	
職員	工員	職員	工員	職員	工員
Staff	Work Men	Staff	Work Men	Staff	Work Men
77	-	283	-	-	-
81	-	292	-	-	-
78	-	336	-	-	-
93	-	184	175	-	-
78	14	182	177	-	-
11	85	190	173	-	-
15	90	214	178	-	-
10	88	221	190	-	-
10	95	189	221	-	-
10	97	190	215	-	-
10	103	214	225	-	-
10	103	202	216	-	-
10	134	195	215	-	-

附表二十四 港內作業人員學歷（依組織別）

單位：人

年(底)別 End of Year	總計 Total		研究所 Graduate School		大學 Collage	
	男	女	男	女	男	女
	Male	Female	Male	Female	Male	Female
2001	397	11	7	-	38	3
2002	408	12	7	-	36	3
2003	446	14	7	-	35	4
2004	470	32	8	-	60	5
2005	466	38	6	1	57	8
2006	473	40	6	1	59	9
2007	501	46	6	1	59	9
2008	517	41	6	1	63	8
2009	525	40	7	2	66	7
2010	523	37	8	1	70	6
2011	563	37	10	-	74	6
2012	551	28	11	-	71	6
2013	577	25	13	-	85	6
管理小組	6	2	2	-	3	2
民營事業	35	5	3	-	12	2
港灣作業機構	138	6	2	-	30	1
棧埠作業機構	398	12	6	-	40	1

Table 24. Number of Staff by Education

Unit : Person

專 科 Junior Collage		高 中 職 Senior High School		國 中 Junior High School		國 小 Primary School	
男	女	男	女	男	女	男	女
Male	Female	Male	Female	Male	Female	Male	Female
115	5	192	1	34	1	11	1
120	5	193	2	35	1	17	1
112	5	228	3	45	1	19	1
187	11	115	6	79	4	21	6
191	12	119	5	78	6	15	6
203	13	110	5	83	6	12	6
218	13	120	8	83	6	15	9
233	12	126	9	78	5	11	6
230	11	129	10	82	5	11	5
235	12	128	14	73	2	9	2
254	12	157	14	65	2	3	3
257	7	151	12	60	2	1	1
290	4	127	12	52	2	10	1
1	-	-	-	-	-	-	-
18	1	2	2	-	-	-	-
50	1	29	3	17	-	10	1
221	2	96	7	35	2	-	-

附表二十五 港內作業人員年齡（依組織別）

單位：人

年(底)別	總計		19歲以下		20-24歲		25-29歲		30-34歲		35-39歲	
	Total		Age Under		Age		Age		Age		Age	
End of Year	男	女	男	女	男	女	男	女	男	女	男	女
	Male	Female	Male	Female	Male	Female	Male	Female	Male	Female	Male	Female
2001	397	11	-	-	38	2	136	8	96	-	66	1
2002	408	12	-	-	26	1	133	8	114	2	69	1
2003	446	14	-	-	41	1	143	9	121	3	73	1
2004	470	32	1	-	6	2	88	12	123	6	83	6
2005	466	38	1	-	6	2	85	12	116	10	76	7
2006	473	40	2	-	5	2	83	10	105	8	83	12
2007	501	46	1	-	4	2	88	11	107	9	92	13
2008	517	41	1	-	6	2	93	10	121	9	94	13
2009	525	40	1	-	4	2	93	9	125	8	93	13
2010	523	37	-	-	4	-	88	2	112	6	98	17
2011	563	37	-	-	13	-	108	2	122	5	96	15
2012	551	28	-	-	13	-	108	2	122	5	98	8
2013	577	25	-	-	13	-	115	4	125	4	106	9
管理小組	6	2	-	-	-	-	1	-	-	1	-	-
民營事業	35	5	-	-	-	-	-	-	1	-	6	2
港灣作業機構	138	6	-	-	-	-	7	2	11	1	28	1
棧埠作業機構	398	12	-	-	13	-	107	2	113	2	72	6

Table 25. Number of Staff by Age

Unit : Person

40 - 44 歲 Age		45 - 49 歲 Age		50 - 54 歲 Age		55 - 59 歲 Age		60 - 64 歲 Age		65 歲以上 Age Over	
男	女	男	女	男	女	男	女	男	女	男	女
Male	Female	Male	Female	Male	Female	Male	Female	Male	Female	Male	Female
28	-	18	-	14	-	-	-	1	-	-	-
23	-	21	-	19	-	1	-	2	-	-	-
23	-	23	-	18	-	3	-	1	-	-	-
65	5	48	-	40	-	10	1	6	-	-	-
68	6	48	-	46	-	13	1	7	-	-	-
67	5	54	2	42	-	19	1	13	-	-	-
76	6	53	2	40	-	21	1	17	1	2	1
79	6	49	1	39	-	18	-	17	-	-	-
76	7	49	-	40	-	29	-	15	1	-	-
80	7	56	5	43	-	25	-	16	-	1	-
93	9	53	5	40	1	22	-	15	-	1	-
93	7	55	5	32	1	19	-	7	-	4	-
86	5	63	3	28	-	18	-	20	-	3	-
3	-	1	1	-	-	1	-	-	-	-	-
15	3	6	-	1	-	3	-	2	-	1	-
17	1	22	1	19	-	14	-	18	-	2	-
51	1	34	1	8	-	-	-	-	-	-	-

六、 Harbor Facilities

Table 26. Mechanical, Vehicular & Marine Equipment

Tonnage Unit : M.T.
Gross Tonnage : Ton.

具 Mechanical Equipment											
貨櫃吊連機 Container Transtainer		貨櫃車架 Container Chassis		貨櫃側載機 Container Side Loader		空櫃推高機 Empty C. Fork Lift		起重機 Mobile Crane		推高機 Fork - Lift Truck	
台	噸量	台	噸量	台	噸量	台	噸量	台	噸量	台	噸量
S.	Tonnage	S.	Tonnage	S.	Tonnage	S.	Tonnage	S.	Tonnage	S.	Tonnage
2	40	-	-	-	-	1	8	-	-	1	2.5
2	40	-	-	-	-	1	8	1	40	1	2.5
4	80	-	-	-	-	2	16	1	40	1	2.5
4	80	-	-	-	-	2	16	1	40	6	38
4	80	-	-	-	-	2	16	1	40	14	39
4	80	-	-	-	-	2	16	1	40	14	39
4	80	-	-	-	-	2	16	3	46	15	20
4	80	-	-	-	-	2	16	3	46	15	20
4	80	-	-	-	-	2	16	1	40	15	20
4	80	-	-	-	-	2	16	1	40	14	15
4	80	-	-	-	-	2	16	1	40	14	15
4	80	-	-	-	-	2	16	1	40	14	15
4	80	-	-	-	-	2	16	1	40	14	15
-	-	-	-	-	-	-	-	-	-	-	-
-	-	-	-	-	-	-	-	-	-	-	-
-	-	-	-	-	-	-	-	-	-	-	-
4	80	-	-	-	-	2	16	1	40	14	15

附表二十六 機具、車、船（依組織別）（續完）

噸量單位：公噸
總噸位單位：噸

年 (底) 別 End of Year	車 輛 Vehicular Equipment									
	拖 車		拖 板		卡車、工程車、清 掃車		挖 泥 船		受 泥 船	
	Towing Tractor		Full Trailer		Truck		Dredger		Mud Boat	
	台 S.	噸量 Tonnage	台 S.	噸量 Tonnage	台 S.	噸量 Tonnage	艘 V.	總噸位 Tonnage	艘 V.	總噸位 Tonnage
2001	-	-	-	-	8	-	-	-	-	-
2002	-	-	-	-	8	-	-	-	-	-
2003	-	-	-	-	14	10	-	-	-	-
2004	13	39	10	35	20	7	-	-	-	-
2005	16	39	10	35	37	22	-	-	-	-
2006	16	39	10	35	29	33	4	5	-	-
2007	16	35	10	35	33	13	4	5	-	-
2008	16	35	10	35	31	11	4	5	-	-
2009	16	35	10	35	34	22	1	1,809	-	-
2010	16	35	10	35	32	15	1	1,809	-	-
2011	16	35	10	35	31	11	1	1,809	-	-
2012	16	35	10	35	31	11	1	1,809	-	-
2013	16	35	10	35	32	13	1	1,809	-	-
管理小組	-	-	-	-	-	-	-	-	-	-
民營事業	-	-	-	-	-	-	-	-	-	-
港灣作業機構	-	-	-	-	3	9	1	1,809	-	-
棧埠作業機構	16	35	10	35	29	4	-	-	-	-

附表二十七 港埠工程

總長度單位：公尺
有效容量單位：公噸
繫泊能力單位：總噸
堆儲量單位：公噸

年 (底) 別 End of Year	專 用 碼 頭 Wharves		倉 棧 Warehouse and Sheds		浮筒 Bouys	
	座	總長度	座	總長度	座	總長度
	Set	T.L.	Set	T.L.	Set	T.L.
2001	17	4,666	-	-	-	-
2002	17	4,666	-	-	-	-
2003	17	4,666	-	-	-	-
2004	17	4,666	-	-	-	-
2005	17	4,666	-	-	-	-
2006	17	4,666	-	-	-	-
2007	19	5,326	-	-	-	-
2008	19	5,326	-	-	-	-
2009	19	5,326	-	-	-	-
2010	20	5,701	-	-	-	-
2011	20	5,701	-	-	-	-
2012	20	5,701	-	-	-	-
2013	20	5,701	-	-	-	-



主管機關

經濟部工業局

台北市信義路三段 41-3 號

電話：(02)27541255 傳真：(02)27043757



管理單位

經濟部工業局麥寮工業專用港管理小組

雲林縣麥寮鄉台塑工業園區港務大樓四樓

電話：(05)6812533 傳真：(05)6812534



經營單位

麥寮工業區專用港管理股份有限公司

雲林縣麥寮鄉台塑工業園區一號

電話：(05)6812766 傳真：(05)6812135