

# 麥寮工業專用港

## 統計要覽

### STATISTICAL ABSTRACT OF MAILIAO HARBOR 2012

經濟部工業局編印

Complied By

Industrial Development Bureau  
Ministry of Economic Affairs  
Taiwan, Republic of China

中華民國一百零二年

# 目 錄

## Contents

	頁次 (page)
第一篇 基本概況 Basic Overview.....	1
第二篇 提要分析 Summary Analysis.....	3
第三篇 統計表 Statistics Tables	
一、港務 Harbor Management	
(一) 船舶 Vessels	
附表 1 進出港輪船地區 .....	22
Incoming and Outgoing Vessels by Area	
附表 2 進港輪船國籍 .....	24
Number of Incoming Vessels by Registered Nationality	
附表 3 進港輪船種類 .....	26
Number of Incoming Vessels by Kind	
附表 4 進港輪船航次 .....	28
Number of Incoming Vessels by Line of Navigation	
附表 5 出港輪船航次 .....	30
Number of Outgoing Vessels by Line of Navigation	
附表 6 進港輪船噸級與在港停泊時間 .....	32
Number of Incoming Vessels by Gross Tonnage and Time of Vessels Mooring in Port	
(二) 貨物 Cargoes	
附表 7 進出港貨物國輪外輪承運量 .....	34
Tonnage of Imports & Exports Carried by Domestic and Foreign Vessels	
附表 8 進港貨物(地區別) .....	36
Tonnage of Imports (by Region)	

# 目 錄

## Contents

	頁次 (page)
附表 9 出港貨物(地區別) .....	38
Tonnage of Exports (by Region)	
附表 10 進港貨物分類(按月) .....	40
Classification of Imports (by Month)	
附表 11 進港貨物分類(按碼頭) .....	44
Classification of Imports (by Wharf)	
附表 12 出港貨物分類(按月) .....	48
Classification of Exports (by Month)	
附表 13 出港貨物分類(按碼頭) .....	52
Classification of Exports (by Wharf)	
二、棧埠 Stevedoring & Warehousing	
附表 14 本港裝卸業者營運實績(依公司別).....	54
Volume of Cargoes Handled by Stevedoring & Warehousing Companies	
附表 15 裝卸貨物噸量 .....	56
Volume of Cargoes Handled	
附表 16 裝卸貨物效率 .....	58
Efficiency of Cargoes Handled	
附表 17 貨櫃裝卸量 .....	60
Number of Containers Handled	
附表 18 倉儲業務概況 .....	64
Volume of Warehousing	
三、航政監理 Supervising and Administering of navigation	
附表 19 工業專用港區域海事案件 Ship-Wreck...	66

# 目 錄

## Contents

頁次 (page)

四、財務 Finance	
附表 20 營業總收入 Total Operating Revenue...	68
附表 21 營業總支出 Total Operating Expense...	70
五、組織及人事 Organization and Personnel matters	
附表 22 港內各作業組織系統表 .....	72
Organization Chart	
附表 23 港內作業人數(依組織別) .....	74
Number of Staff & Workmen of the Bureau and Branch Offices	
附表 24 港內作業人員學歷(依組織別) .....	76
Number of Staff by Education	
附表 25 港內作業人員年齡(依組織別) .....	78
Number of Staff by Age	
六、港埠設施 Harbor Facilities	
附表 26 機具、車、船(依組織別) .....	80
Mechanical, Vehicular & Marine Equipment	
附表 27 港埠工程 .....	84
Harbor Construction	

## 第一篇 基本概況

### 一、港埠基本資料

經濟部為因應我國基礎工業之發展，配合六輕及六輕擴大投資計畫用地需求，以提供國內既有及未來石化產業建廠及遷廠需要，乃規劃於雲林縣外海以抽砂填海造地方式開發雲林離島式基礎工業區，共分有麥寮區、新興區、台西區及四湖區，其中麥寮區之六輕計畫石化工業區係由台塑企業自行進行抽砂填海造地，而麥寮工業專用港（以下簡稱麥寮港）內之專用碼頭，則全為配合六輕計畫所興建；未來配合開發進度，將再進行十座公用碼頭之興建並提供該工業區內廠商使用。

麥寮港為我國由民營事業投資興建及經營管理港口之首例，其港埠經營完全由台塑企業成立之麥寮工業區專用港管理股份有限公司（以下簡稱港口公司）負責，經濟部工業局於 89 年 10 月 1 日現地派駐成立麥寮工業專用港管理小組（以下簡稱管理小組），以最精簡人力有效扮演監督，執行具有公權力之港務行政管理及協調航政、海關、港警、檢疫及安檢等其他相關公務機關，順利於 90 年 2 月 22 日邀集交通部、財政部、內政部、國防部、海巡署、環保署、農委會及雲林縣政府等各機關現地履勘合格後，已於 90 年 3 月 1 日起開始正式營運。

麥寮港位於東經 120 度 08.9 分、北緯 23 度 46.9 分。北起濁水溪口南側，南臨新虎尾溪口，澎湖水道東側海岸。北距台中港約 40 哩，南離高雄港約 80 哩。港口方向朝西偏南 34°（約介於西南西與西南間），航道於中潮位水深 24 公尺，可供 30 萬噸級船舶進出，為台灣最深之港口。

## 二、港灣及碼頭

### (一)港灣設施

- (1)防波堤：西防波堤長 3,243 公尺，南防波堤長 2,227 公尺。
- (2)迴船池：直徑 900 公尺。
- (3)港外水域：劃設領港登輪區、外航道及到港船舶錨泊區。
- (4)導航設施：進港疊標、堤頭燈塔及航道浮燈標等，用以引導及協助船舶之安全航行。
- (5)信號台設施：船舶交通管理系統(VTS)、海氣象設施及 DSB 通信設備等，用以管制船舶航行與進出港。
- (6)港勤船渠：供港勤船舶靠泊、加油及加水等使用。
- (7)港務港勤大樓：提供政府單位、港區作業單位、港口公司及信號台辦公或作業所需。
- (8)機工場及滑道：供港勤船舶維修、檢驗及保養所需。

### (二)碼頭設施

營運中 20 座專用碼頭分別由台塑石化公司及麥寮汽電公司自行投資興建及維護管理，而公用碼頭將配合未來需求，由港口公司投資興建及經營管理。

## 三、設備概況

### (一)港勤船舶

由港口公司購置拖船 11 艘、交通船 1 艘及什用船 2 艘，用以協助船舶進出港口及靠泊碼頭所需。

### (二)裝卸設備

各碼頭依裝卸需求由裝卸作業單位購置裝卸機具，諸如卸料臂、卸煤機、貨櫃起重機、貨櫃吊運機及空櫃堆高機等，以提供裝卸服務。

## 第二篇 提要分析

### 一、營運實績

#### (一) 進出港船舶

(1) 進港船舶：101年1月至12月進港船舶合計2,437艘次，5,214萬3,234總噸位，較100年減少54艘次，減少率為2.17%，總噸位則增加103萬1,049總噸位，增加率為2.02%，若與90年比較，則增加1,066艘次及增加3,022萬2,531總噸位，增加率分別為77.75%與137.87%。

(2) 出港船舶：101年1月至12月出港船舶合計2,440艘次，5,187萬3,091總噸位，較100年減少43艘次，減少率為1.73%，總噸位則增加83萬2,105總噸位，增加率為1.63%，若與90年比較，則增加1,066艘次及增加2,990萬9,925總噸位，增加率分別為77.58%與136.18%。

(二) 貨物吞吐量：101年全年進港貨物為4,523萬5,861公噸、出港貨物為1,947萬1,926公噸，吞吐量為6,470萬7,787公噸，較上年增加436萬2,639公噸，增加率為7.23%。若與90年比較，則增加3,838萬7,741公噸，增加率為145.85%

(三) 貨物裝卸量：101年1月至12月全港裝卸量合計為6,459萬642公噸，較上年增加421萬4,658公噸，增加率為6.98%。若與90年比較，則增加3,854萬9,214公噸，增加率為148.03%；另101年區內貨主以台塑石化公司5,020萬160公噸為最多，占77.72%，其次為麥寮汽電公司531萬4,721公噸，占8.23%，再次為台塑公司376萬5,659

公噸，占 5.83%。

(四)謹刊列臺灣地區各港口 101 年營運量比較表（如表 1），以供參考。

## 二、港務統計資料

101 年度進出港船舶及貨物，依各類統計條件說明如次：

### (一)船舶

- (1)進港船舶國籍：以香港 445 艘次為最多，其次為巴拿馬 374 艘次，再次為賴比瑞亞 282 艘次。
- (2)進港船舶種類：以化學輪 892 艘次為最多，其次為油輪 795 艘次，再次為液化輪 248 艘次。與 100 年進港船舶比較，增減率分別為 13.20%、-0.25%及-14.48%。
- (3)進港輪船航次：以國內而言，來自於高雄港 55 艘次為最多。以國外而言，則以香港 305 艘次為最多，其次為南韓 245 艘次，再次為菲率賓 128 艘次。
- (4)出港輪船航次：以國內而言，前往高雄 74 艘次為最多。以國外而言，則以新加坡 337 艘次為最多，其次為香港 192 艘次，再次為南韓 168 艘次。
- (5)進港船舶噸級：進港船舶每艘平均 2 萬 1,396 總噸，較上年度增加 877 總噸，其中有 743 艘次船舶總噸位介於 1,000~4,999 總噸位為最多，其次船舶總噸位介於 5,000~9,999 總噸位為 566 艘次，再次船舶總噸位介於 10,000~19,999 總噸位為 334 艘次。
- (6)在港停泊時間：出港船舶每艘平均停泊 35.54 小時，較上年度減少 1.71 小時，其中有 1,010 艘次以船舶停泊 24 小時以內為最多，其次為 25~48 小時者 995 艘次，再次為 49~72 小時者 228 艘次。

### (二)貨物

- (1)船舶承運量：國輪承運 75 萬 5,367 公噸，占全部 1.17%，較上年度增加 4 萬 9,392 公噸，成長 7.0%。外輪承運 6,395 萬 2,420



公噸，占全部 98.83%，較上年度增加 431 萬 3,247 公噸，成長 7.23%。

(2)貨物來源地：以沙烏地阿拉伯 854 萬 5,109 公噸為最多，占 18.89%，其次為科威特 747 萬 3,517 公噸，占 16.52%，再次為澳洲 591 萬 3,064 公噸，占 13.07%。

(3)貨物運達地：以中國大陸 466 萬 2,780 噸為最多，占 23.95%，其次為新加坡 442 萬 4,542 公噸，占 22.72%，再次為菲律賓 313 萬 9,983 公噸，占 16.13%。

(4)進港貨物類別：以非金屬礦物製品 2,853 萬 2,558 公噸為最多，占 63.08%，其次為礦產品 1,509 萬 7,796 公噸，占 33.38%，再次為化學品 156 萬 6,478 公噸，占 3.46%。

(5)出港貨物類別：以非金屬礦物製品 1,271 萬 3,358 公噸為最多，占 65.29%，其次為化學品 635 萬 3,202 公噸，占 32.63%，再次為礦產品 23 萬 4,700 公噸，占 1.21%。

(6)進港貨物卸貨碼頭：以西三碼頭 1,887 萬 2,566 公噸為最多，占 41.72%，其次為東三碼頭 710 萬 6,220 公噸，占 15.71%，再次為西二碼頭 645 萬 908 公噸，占 14.26%。

(7)出港貨物裝貨碼頭：以東七碼頭 420 萬 804 公噸為最多，占 21.57%，其次為西二碼頭 345 萬 7,974 公噸，占 17.76%，再次為東八碼頭 235 萬 6,132 噸，占 12.10%。

### 三、棧埠統計資料

101 年度棧埠裝卸情形，依各類統計條件說明如次：

(1)貨主：以台塑石化公司 5,020 萬 160 公噸為最多，占 77.72%，其次為麥寮汽電公司 531 萬 4,721 公噸，占 8.23%。

(2)裝卸貨物：裝貨部份以管道貨 1,804 萬 2,618 公噸為最多，占裝貨量 94.21%。卸貨部份以管道貨 3,010 萬 5,210 公噸為最多，占 66.25%，其次為燃煤 1,324 萬 7,936 公噸，占 29.16%。

(3)裝卸效率：平均每小時裝貨量 318 公噸，較上年度減少 0.93%。平均每小時卸貨量 694 公噸，較上年度增加 1.76%。

(4)貨櫃：裝卸貨櫃個數折合 20 呎共 3 萬 2,774 TEU，較上年度減少 8,563 TEU，負成長 20.72%。其中進口貨櫃 1 萬 6,457 TEU，較上年度減少 4,202 TEU，負成長 20.34%；出口貨櫃 1 萬 6,317 TEU，較上年度減少 4,361 TEU，負成長 21.09%。

#### 四、航政統計資料

101 年麥寮港海事案件計 0 件，較上年減少 8 件。

#### 五、財務統計資料

港口公司及裝卸單位 101 年營業收入總計 41.10 億元，較上年增加 4.43 億元，成長 12.09%。營業支出 29.14 億元，較上年增加 3.66 億元，成長 14.37%。

#### 六、組織及人事統計資料

(1)管理小組：執行具有公權力之港務行政管理及協調航政、海關、港警、檢疫及安檢等其他相關公務機關，合計 7 人（含主任），與上年度相同。

(2)港口公司：負責麥寮港之經營與管理，設有管理組、航管組、港安組及工程組，由航管組、港安組及工程組負責現地港務業務，合計 41 人，與上年度相同。

(3)港灣作業機構：麥寮港之拖船操作業務係由港口公司委託台塑海運公司執行，另引水人接送、帶解纜、船舶垃圾清理及港區海面垃圾清理等業務由外包廠商負責辦理，合計 113

人，與上年度相同。

(4)棧埠作業機構：由區內興辦工業人委託台塑石化公司碼槽處執行專用碼頭之裝卸作業，另攔油索帶解、加油及加水等作業由外包廠商負責辦理，合計 418 人，較上年度減少 21 人。

### 七、港埠設施統計資料

(1)港棧設施：20 座專用碼頭及 2 處貨櫃堆置場。

(2)船舶：拖船 11 艘、交通船 4 艘及什用船 4 艘等 19 艘港勤船舶，與上年度相同。

(3)機具：貨櫃起重機、貨櫃吊運機、空櫃堆高機、起重機及堆高機等 23 台機具，與上年度相同。

(4)車輛：拖車、拖板車及工程車等 57 輛，與上年度相同。

表 1 101 年度台灣地區各港口營運量比較

港口別	進港船舶				吞吐量		貨物裝卸量	
	艘次	%	總噸位	%	公噸	%	計費噸	%
總計	38,767	100	728,761,464	100	313,085,570	100	764,931,355	100
麥寮港	2,437	6.29	52,143,234	7.16	64,707,787	20.67	64,590,642	8.44
和平港	370	0.95	7,014,968	0.96	9,461,441	3.02	9,538,441	1.25
高雄港	17,250	44.50	381,202,708	52.31	120,756,000	38.57	440,301,297	57.56
基隆港	6,087	15.70	96,511,758	13.24	22,187,874	7.09	69,402,920	9.07
台中港	7,377	19.03	110,459,794	15.16	64,191,014	20.50	111,169,766	14.53
花蓮港	1,033	2.66	10,950,741	1.50	10,692,710	3.42	11,226,185	1.47
蘇澳港	563	1.45	5,518,714	0.76	4,717,030	1.51	5,001,849	0.65
安平港	396	1.02	2,732,940	0.38	1,166,731	0.37	1,172,547	0.15
台北港	3,254	8.39	62,226,607	8.54	15,204,983	4.86	52,527,708	6.87

商港資料來源：高雄港統計年報

## Chapter I. Basic Overview

### 1. Basic Harbor Information

In response to basic domestic development, to co-op with the land necessity of the Six Naphtha Cracking Complex Project and its expansion, and to domestically provide existing and future necessities for the construction and relocation of petrochemical business. The Ministry of Economic Affairs has planned to develop the Yunlin offshore Primary Industry Zone by dredging sea sand for landfill to create offshore lands. The lands created include Mailiao, Hsin Hsing, Tai Hsi, and Ssu Hu. Mailiao area is the petrochemical zone under the Sixth Naphtha Cracking Complex Project which was proceeded by the Conglomerates of Formosa Plastic by dredging sea sand for landfill. The special purpose wharves inside the industrial harbor of Mailiao (hereinafter referred to as Mailiao Harbor) were all constructed to cooperate with the Sixth Naphtha Cracking Complex Project. In the future, to go with the construction progress, there will be ten public wharves to be constructed to support for businesses in those zones.

Mailiao Harbor was the first domestic private enterprise constructed, operated and managed harbor. The harbor operation is run by the Mailiao Harbor Administration Corporation (hereinafter referred to as Mailiao Harbor Corporation) established by Formosa Plastics Groups. The Industrial Development Bureau of the Ministry of Economic Affairs constructed the management groups for Mailiao exclusive industrial harbor (hereinafter referred to as Administration groups) on Oct. 1, 2000, and used the most streamlined manpower to supervise and implement harbor administrative management, and coordinate the navigation & shipping

supervision, customs, harbor police, quarantine, security inspection and other relevant government authorities. After an inspection approval was carried out by the Ministry of Transportation and Communications, the Ministry of Finance, the Ministry of the Interior, the Ministry of National Defense, the Department of Coast Guard, the Department of Environment Protection, the Committee of Agriculture Affairs and the Government of Yunlin County on Feb. 22, 2001; it started its official operation on Mar. 1, 2001.

Mai Liao Harbor is located at longitude 120°08.9' E, latitude 23°46.9'. It is bordered to the north by Chuoshui Stream and to the south by Hsinhuwei Stream. The harbor lies 40 nautical miles south of Taichung and 80 nautical miles north of Kaohsiung. The harbor direction faces west with an inclination of 34 degrees to the south. The shipping channel is 24 meters deep at mean tide and can accommodate 300,000 DWT class VLCC, making it Taiwan's deepest harbor.

## 2. Harbor and Wharf

### A. Harbor Facilities

- (1) Breakwater: The west breakwater is 3,243 meters long, and the south breakwater is 2,227 meters long.
- (2) Turning basin: 900 meters in diameter.
- (3) Outer waters: The outer waters are divided into a Pilot Station, outer navigation channel and anchorage.
- (4) Aids to navigation: Include ranges, breakwater lighthouses and navigational channel buoys to assist in guiding ships into and out of the harbor.
- (5) Signal station: Include VTS (vessel traffic services), climate & sea

conditions facilities and DSB communication equipment.

- (6) Harbor craft basin: For the wharfing and servicing (oil and water) of harbor craft.
- (7) Harbor administration building: Provides government agencies, harbor operating unit, Mailiao Harbor Corporation and signal station or operational demands.
- (8) Ship & machinery repair works and slipway: For repair, inspection and maintenance of harbor craft.

## B. Wharf Facilities

The 20 operating appropriate berths respectively are constructed, operated and managed by Formosa Petrochemical Corporation and Mailiao Power Corporation, and the public berths will be constructed, operated and managed by Mailiao Harbor Corporation in accordance with future demand.

## 3. Equipment Overview

### A. Harbor Vessels

Mailiao Harbor Corporation has purchased 11 tug boats, 1 shuttle boat and 2 miscellaneous boats to assist the incoming/outgoing vessels and docking requirements.

### B. Loading/Unloading Equipment

According to the loading/unloading demands, various wharfs' loading/unloading operation unit will purchase the loading/unloading equipment, such as unloading arm, coal unloader, container cranes, container lifting machine, and empty container forklift to provide the

loading/unloading services.

## Chapter II. Summary Analysis

### 1. Operation Performance

#### A. Incoming/Outgoing Vessels

(1) Incoming Vessels: A total of 2,437 vessels called at Mailiao Harbor in 2012 and amounted to a gross tonnage of 52,143,234. The numbers of vessels had a decrease of 54 (2.17%), and the gross tonnage increased 1,031,049 GT (2.02%), compared to the previous year. Compared to 2001, the number of the vessels had an increase of 1,066 (77.75%) and the gross tonnage increased 30,222,531 GT (137.87%).

(2) Outgoing Vessels: A total of 2,440 vessels called at Mailiao Harbor in 2012 and amounted to a gross tonnage of 51,873,091. The number of vessels had a decrease of 43 (1.73%), and the gross tonnage increased 832,105 GT (1.63%), compared to that of the previous year. Compared to 2001, the number of vessels had an increase of 1,066 (77.58%) and the gross tonnage increased 29,909,925 GT (136.18%).

B. Cargo throughput: At Mailiao Harbor, the imports reached 45,235,861 MT in 2012, and the exports reached 19,471,926 MT. The amount of cargo throughput reached 64,707,787 MT, 4,362,639 MT (7.23%) more than that of the previous year. It had an increase of 38,387,741 MT (145.85%) over 2001.

C. Loading and Unloading: In 2012 the amount of loading and unloading

reached 64,590,642 revenue tons, 4,214,658 MT (6.98%) more than that of the previous year. Compared to 2001, the amount of loading and unloading had an increase of 38,549,214 MT (148.03%). In addition, Formosa Petrochemical Corporation was the biggest owner of cargo in 2012, 50,200,160 MT (77.72%), followed by Mailiao Power Corporation's 5,314,721 MT (8.23%), and Formosa Plastics Corporation's 3,765,659 MT (5.83%).

D. The business volume comparison table of Taiwan harbors in 2012 is listed for reference (See Table 1).

## 2. Harbor Statistical Information

The 2012 incoming/outgoing vessels and cargo are described in accordance with the various statistical conditions as follows:

### A. Vessels

- (1) Incoming Vessels by Nationality: Most incoming vessels came from Hong Kong, 445, followed by Panama, 374 and Liberia, 282.
- (2) Incoming Vessels by Kind: There are 892 chemical tankers, followed by 795 tankers, and 248 liquid chemical tankers. In comparison with the incoming vessels by kind in 2011, the ratios respectively are 13.20%, -0.25% and -14.48%.
- (3) Incoming Vessels by Line of Navigation: Domestically, there are 55 ships from Kaohsiung Harbor. Internationally, there are 305 ships from Hong Kong, followed by 245 ships from South Korea and 128 ships from Philippine.
- (4) Outgoing Vessels by Line of Navigation: Domestically, there are 74 ships going to Kaohsiung. Internationally, there are 337 ships going to Singapore, followed by 192 ships going to Hong



Kong and 168 ships going to South Korea.

- (5) Incoming Vessels by Gross Tonnage: On average, each incoming vessel has 21,396 GT, compared to 2011, the gross tonnage had an increase of 877, of which there are 743 vessels between 1,000 GT~4,999 GT, 566 vessels between 5,000 GT~9,999 GT, and 334 vessels between 10,000 GT~19,999 GT.
- (6) Time of Vessels Mooring in port: The average number of mooring hours of the outbound vessels is 35.54 which is 1.71 hours less than in 2011, of which there are 1,010 vessels mooring in 24 hours, followed by 995 vessels mooring for 25~48 hours, and 228 vessels mooring for 49~72 hours.

## B. Cargo

- (1) Vessels Carried Volume: The domestic vessel carried volume is 755,367 tons (1.17%) and 49,392 tons more than in 2011; it has a growth of 7.0%. The foreign vessels cargo volume is 63,952,420 tons (98.83%), and 4,313,247 tons more than in 2011; it has a growth of 7.23%.
- (2) Cargo Origin: Most cargo originates from Saudi Arabia. It has 8,545,109 MT (18.89%), followed by Kuwait's 7,473,517 MT (16.52%), and Australia's 5,913,064 MT (13.07%).
- (3) Cargo Destination: Most cargo is destined for Mainland China with 4,662,780 MT (23.95%), followed by Singapore's 4,424,542 MT (22.72%), and Philippine's 3,139,983 MT (16.13%).
- (4) Classification of Imports: The non-metallic mineral products are the most, 28,532,558 MT (63.08%), followed by 15,097,796 MT of

mineral products (33.38%), and 1,566,478 MT of chemical products (3.46%).

(5) Classification of Exports: The non-metallic mineral products are the most, 12,713,360 MT (65.29%), followed by 6,353,202 MT of chemical products (32.63%), and 234,700 MT of mineral products (1.21%).

(6) Unloading Berths of Imports: Berth West-3 has the most unloading of imports, 18,872,566 MT (41.72%), followed by Berth East-3, which has 7,106,220 MT (15.71%), and Berth West-2, which has 6,450,908 MT (14.26%).

(7) Loading Berths of Exports: Berth East-7 has the most loading of exports, 4,200,804 MT (21.57%), followed by Berth West-2 which has 3,457,974 MT (17.76%), and Berth East-8, which has 2,356,132 MT (12.10%).

### C. Stevedoring & Warehousing Statistical Information

The 2012 Stevedoring & Warehousing situations are described in accordance with the various statistical conditions as follows:

(1) Owner of Cargo: Formosa Petrochemical Corporation is 50,200,160 MT (77.72%) of the most, followed by Mailiao Power Corporation's 5,314,721 MT (8.23%).

(2) Cargo Handling: For cargo loading, the most is pipe line cargo, 18,042,618 MT (94.21%). For cargo unloading, the most is pipe line cargo, 30,105,210 MT (66.25%), followed by 13,247,936 MT of coal (29.16%).

(3) Cargo Handling Efficiency: The average loading volume is 318 MT per hour, which is 0.93% less than 2011. The average unloading volume is 694 MT per hour, which is 1.76% more than 2011.

(4) Container: Loading/unloading container amount is 32,774 TEU, which is 8,563 TEU less than in 2011, a negative growth of 20.72%, of which, the import container is 16,457 TEU, which is 4,202 TEU less than in 2011, a negative growth of 20.34%; the export container is 16,317 TEU, which is 4,361 TEU less than in 2011, a negative growth of 21.09%.

#### 4. Navigation & Shipping Supervision Statistical Information

No marine accident was found in Mailiao Harbor in 2012, there are eight accidents less than in 2011.

#### 5. Financial Statistical Information

The 2012 total operation revenue of Mailiao Harbor Corporation and the loading/unloading units was 4.110 billion, which is 0.443 billion more than in 2011; a growth of 12.09%. The operation expenses were 2.914 billion, which is 0.366 billion more than in 2011; a growth of 14.37%.

#### 6. Organization and Personnel Statistical Information

(1) Administration Groups: implement harbor administrative management, and coordinate the navigation & shipping supervision, customs, harbor police, quarantine, security inspection and other relevant government authorities. There is a total of 7 people (including the chief), the same as the previous year .

(2) Mailiao Harbor Corporation: responsible for the operation and management of Mailiao Harbor; there is a administration

section, a port control section, a port security section and an engineering section set up. The on-site harbor affairs are run by the port control section, port security section and engineering section, which has a total of 41 people, the same as the previous year.

(3) Harbor Operators: trailer operation of Mailiao Harbor is implemented by Formosa Plastics Marine Corporation, commissioned by Mailiao Harbor Corporation, and the coast guard pick up, line handling, vessels trash cleaning and harbor sea surface trash cleaning, etc. affairs handled by the outsourced suppliers. It has a total of 113 people, the same as the previous year.

(4) Berths Operators: district industrial personnel commissioned Formosa Petrochemical Corporation implement appropriate wharf loading/unloading operations. The oil boom unmooring, oil and water servicing operations are handled by the outsourced suppliers; it has a total of 418 people, 21 people less than in 2011.

## 7. Harbor Facilities Statistical Information

(1) Harbor Facilities: 20 specialized wharves and 2 container piling sites.

(2) Vessels: 19 harbor vessels, including: 11 tug boats, 4 shuttle boats and 4 miscellaneous boats, the same as the previous year.

(3) Machines and Instruments: 23 machines and instruments, including: container cranes, container lifting machines, empty container liftfork, cranes and fork lift trucks, the same as the previous year.

(4) Vehicles: 57 trailers and engineering vehicles, the same as the previous

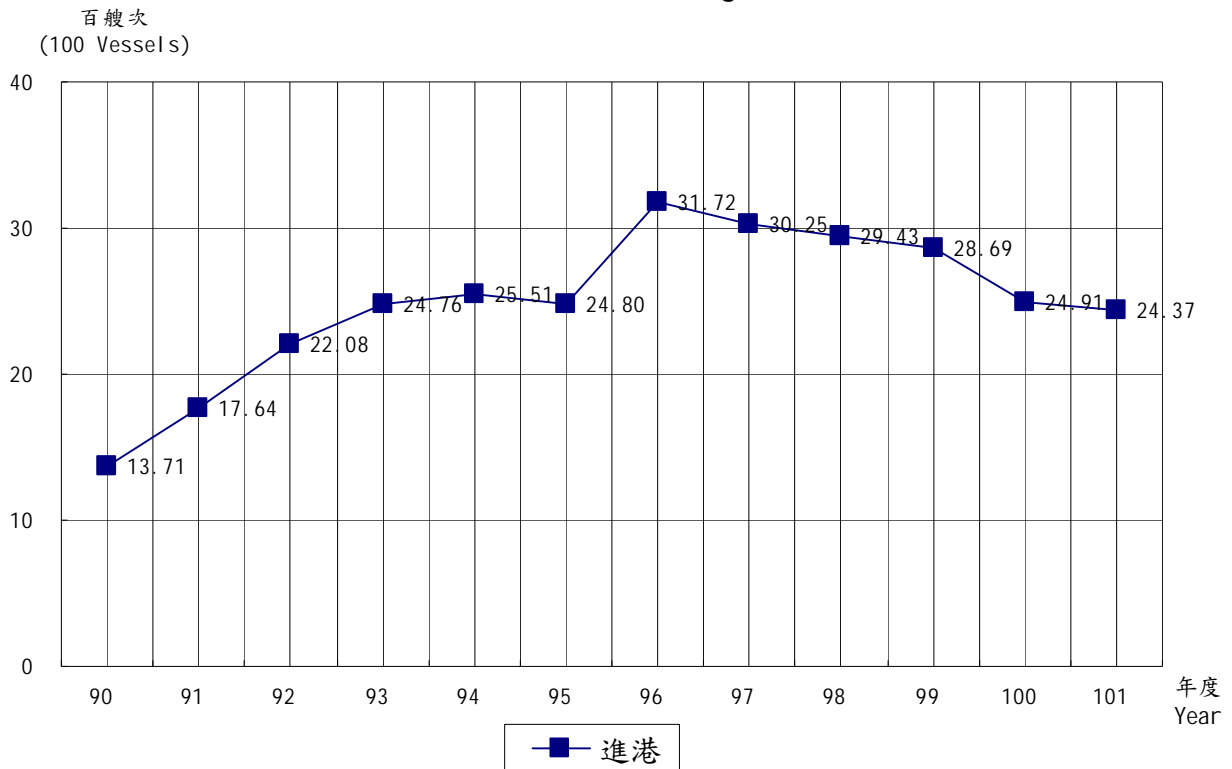
year.

Table 1: The business volume comparison table of Taiwan harbors in 2012

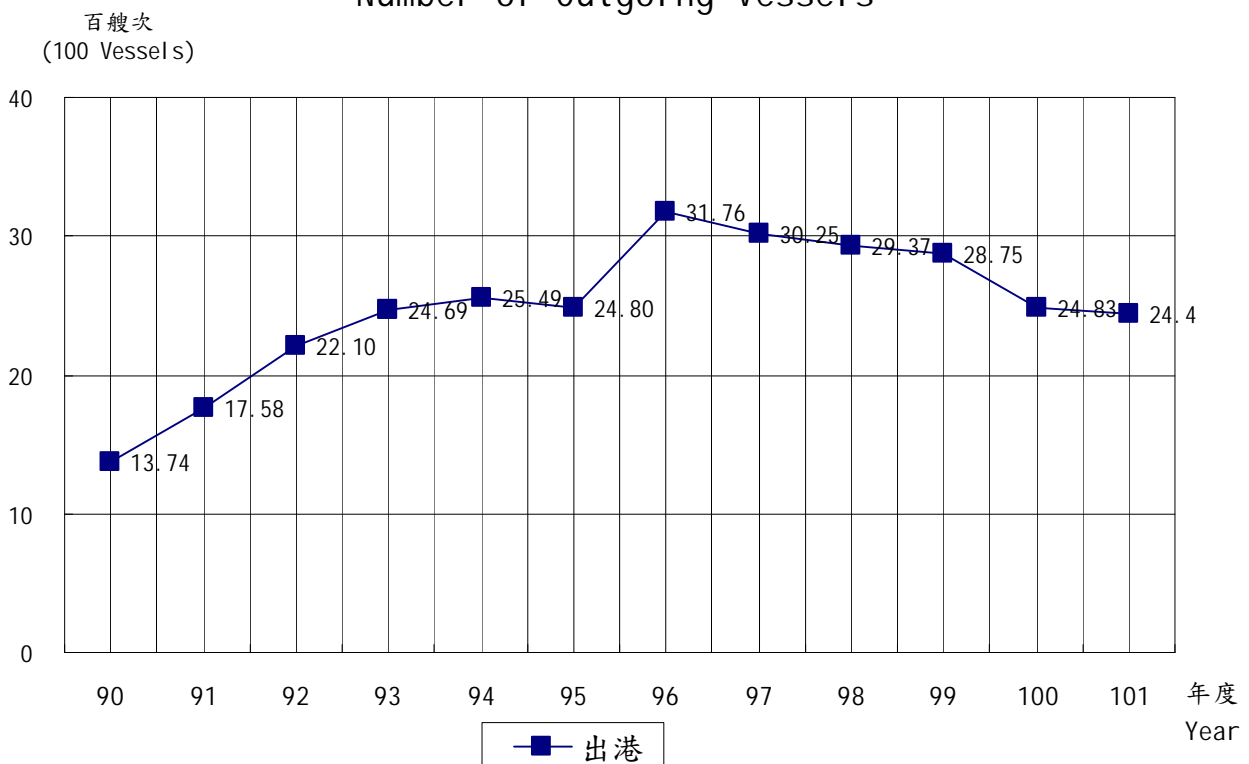
Harbor	Incoming Vessels				Cargo throughput		Cargo Tonnage Handled	
	Vessels	%	Gross Tonnage	%	Tons	%	Revenue Tons	%
Total	38,767	100	728,761,464	100	313,085,570	100	764,931,355	100
Mailiao	2,437	6.29	52,143,234	7.16	64,707,787	20.67	64,590,642	8.44
Heping	370	0.95	7,014,968	0.96	9,461,441	3.02	9,538,441	1.25
Kaohsiung	17,250	44.50	381,202,708	52.31	120,756,000	38.57	440,301,297	57.56
Keelung	6,087	15.70	96,511,758	13.24	22,187,874	7.09	69,402,920	9.07
Taichung	7,377	19.03	110,459,794	15.16	64,191,014	20.50	111,169,766	14.53
Hualien	1,033	2.66	10,950,741	1.50	10,692,710	3.42	11,226,185	1.47
Suao	563	1.45	5,518,714	0.76	4,717,030	1.51	5,001,849	0.65
Anping	396	1.02	2,732,940	0.38	1,166,731	0.37	1,172,547	0.15
Taipei	3,254	8.39	62,226,607	8.54	15,204,983	4.86	52,527,708	6.87

Port Information Source: Annual Statistical Report of Kaohsiung Port

## 進港船舶艘次 Number of Incoming Vessels



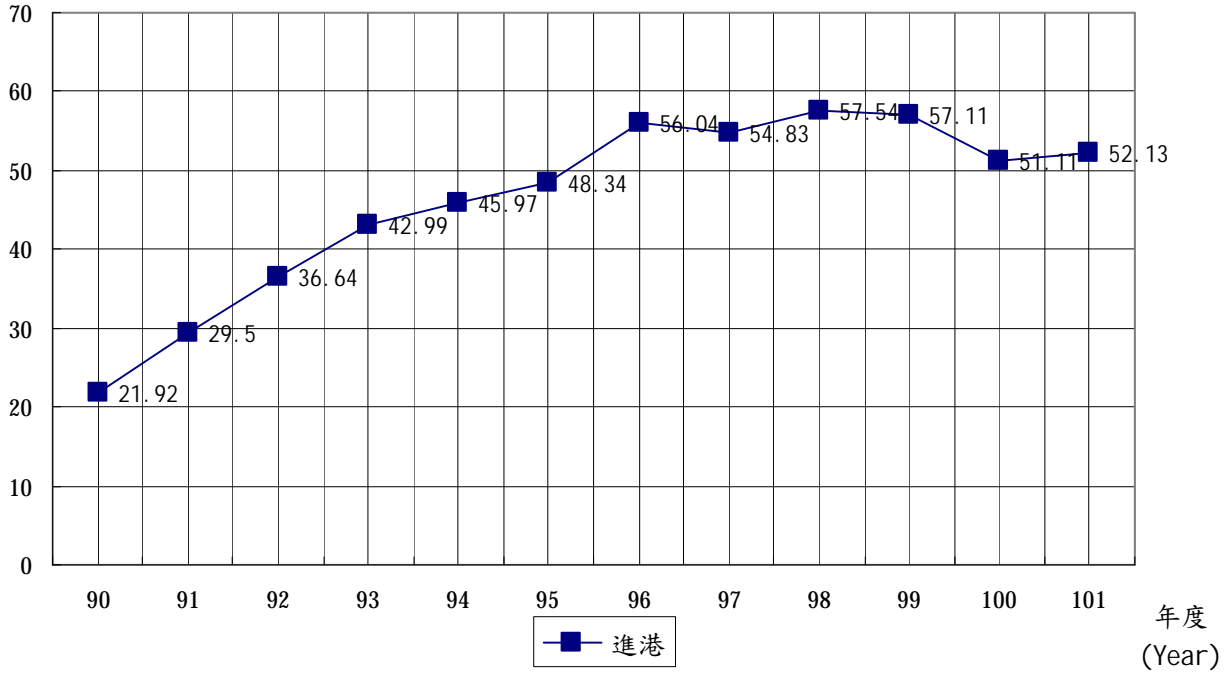
## 出港船舶艘次 Number of Outgoing Vessels



### 進港船舶總噸位

### Gross Tonnage of Incoming Vessels

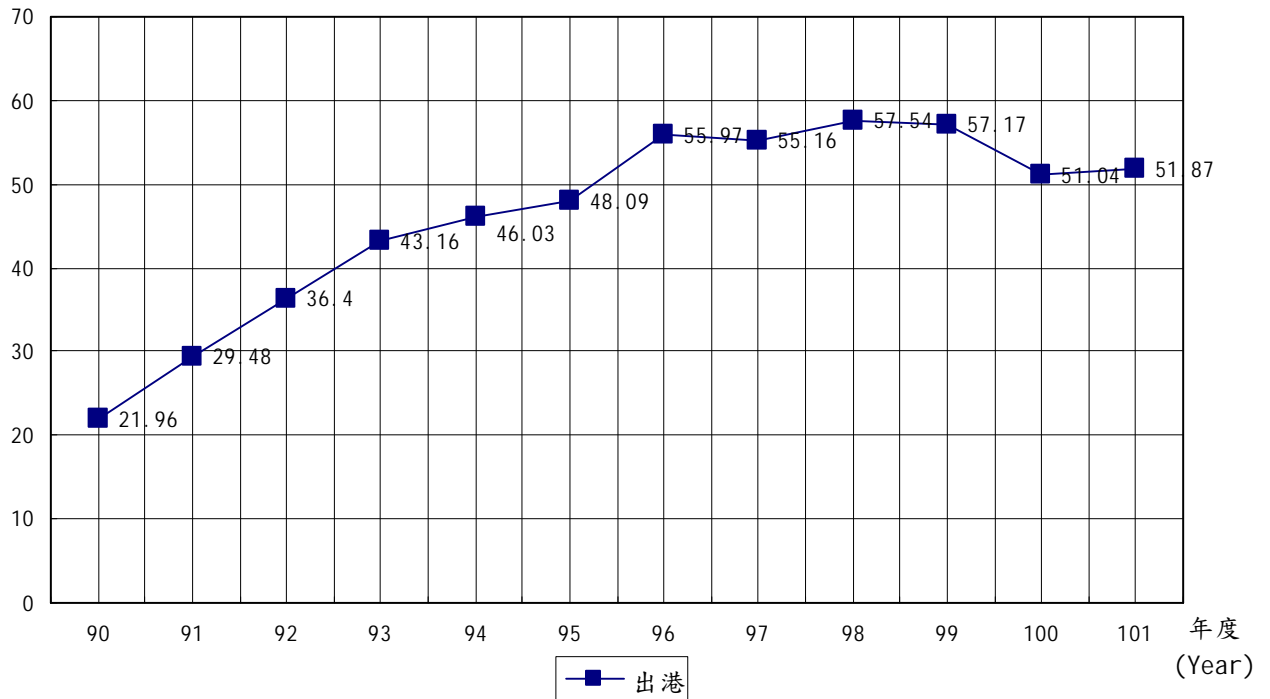
百萬總噸  
(Million GTs)



### 出港船舶總噸位

### Gross Tonnage of Outgoing Vessels

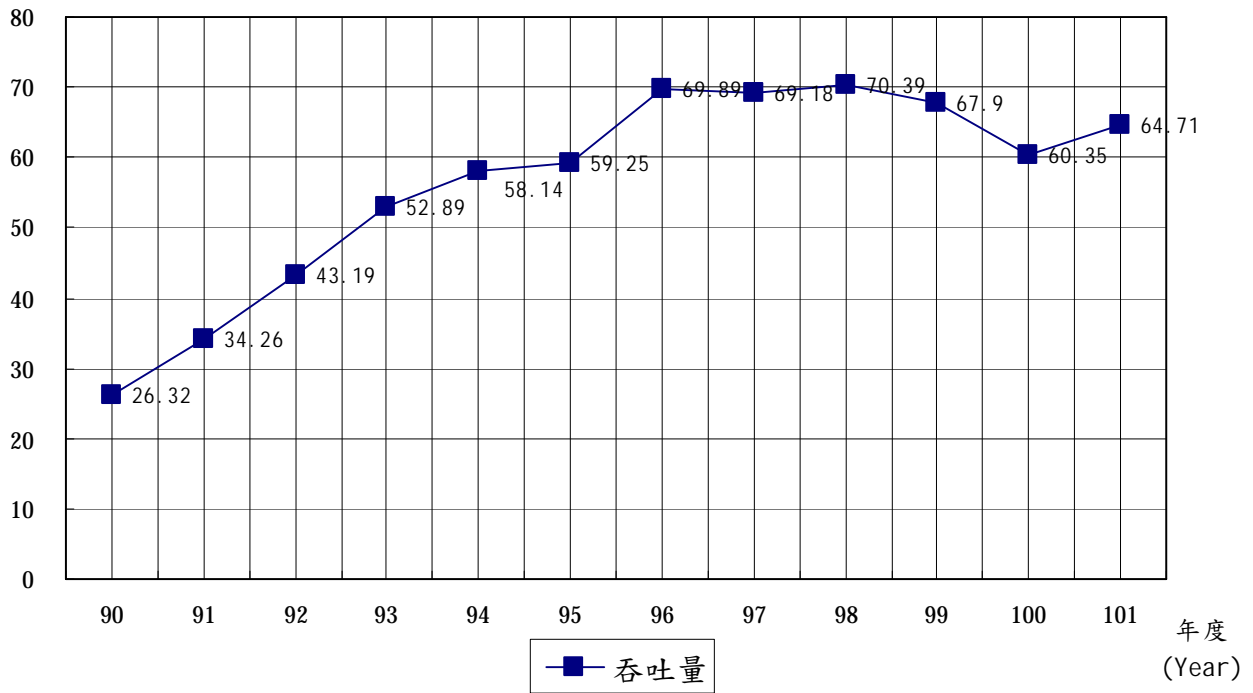
百萬總噸  
(Million GTs)



### 貨物吞吐量

### Amount of Cargoes Throughput

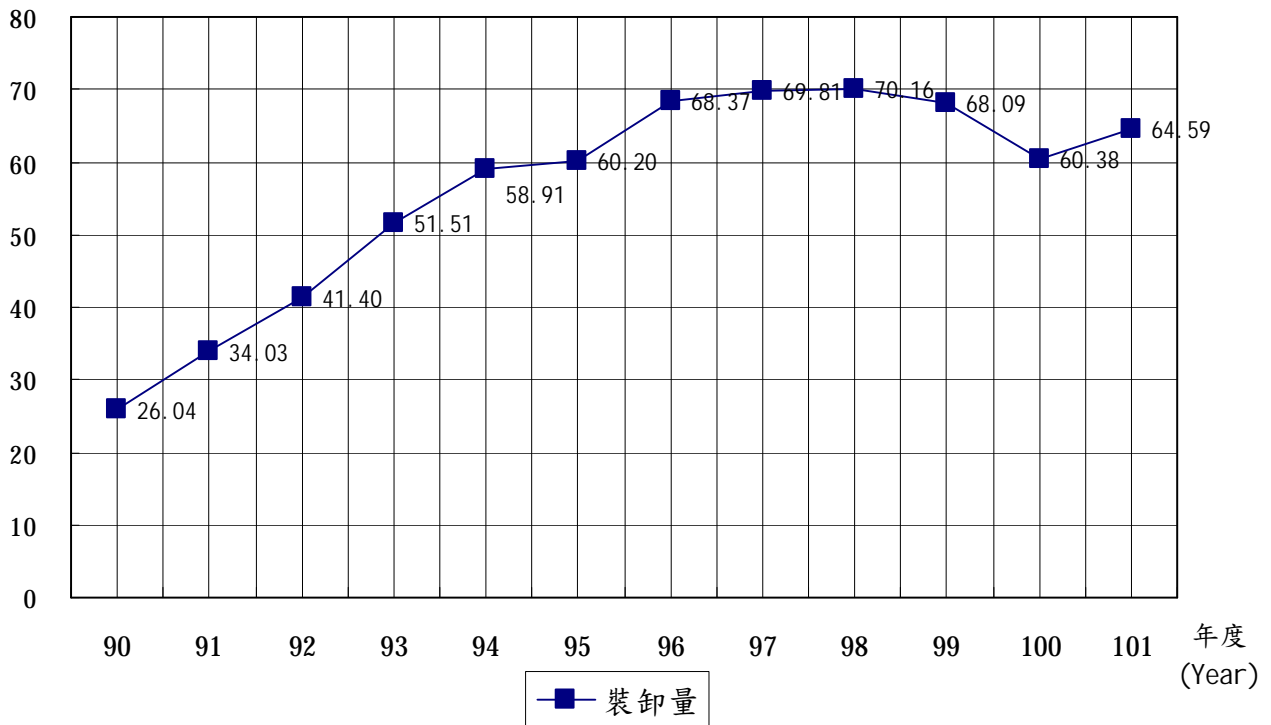
百萬公噸  
(Million MT)



### 貨物裝卸量

### Volume of Cargoes Handled

百萬公噸  
(Million MT)

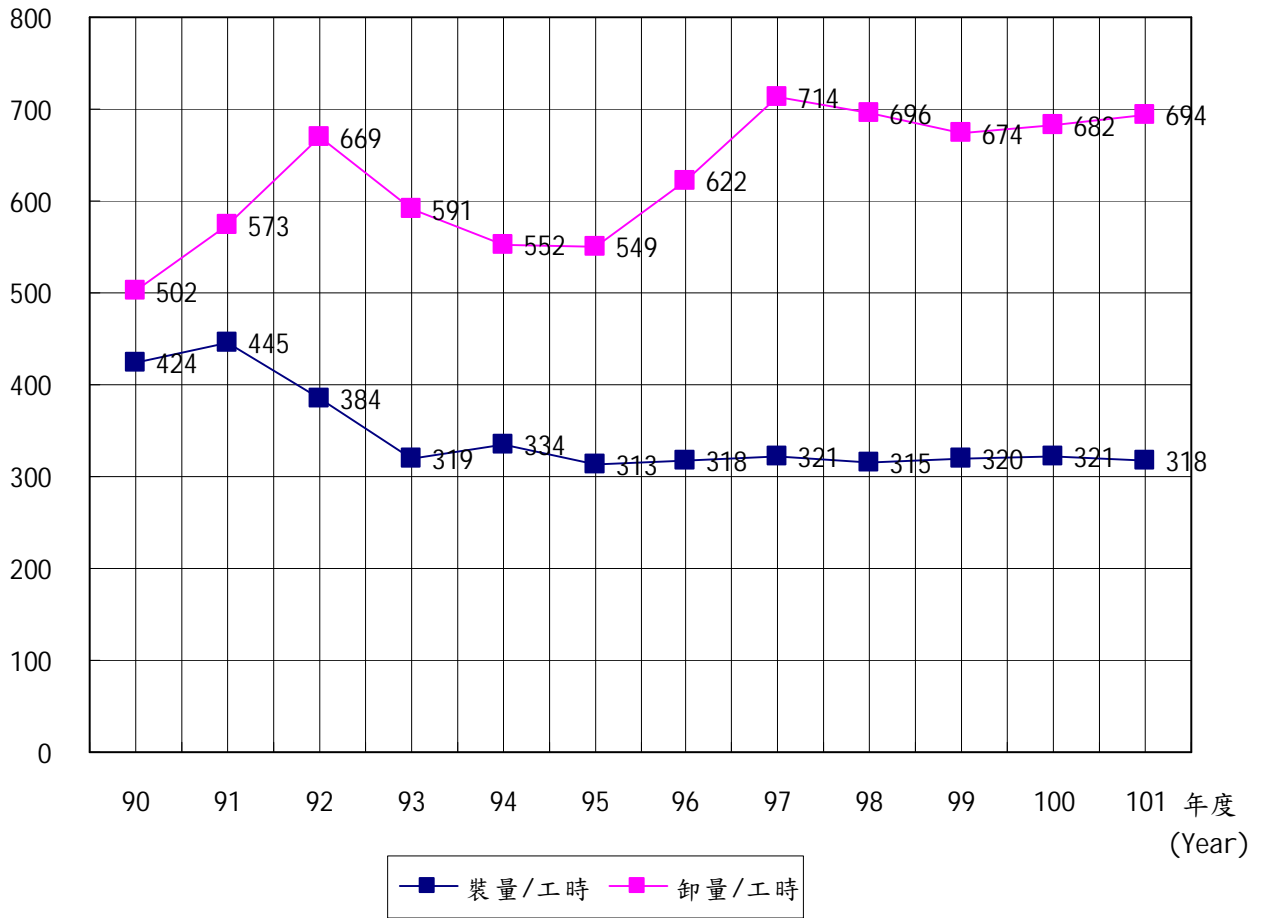




# 貨物裝卸效率

## Efficiency of Cargoes Handled

量/時  
(V/H)



### 第三篇 統計要覽

#### 一、港務

#### 附表一 進出港輪船運輸量

艘次單位：次  
總噸位單位：噸

年 (月) 別 Year and Month	進 港					
	總 計		國 內		國 外	
	Total		Domestic		Foreign	
	艘 次	總 噸 位	艘 次	總 噸 位	艘 次	總 噸 位
V.	G. T.	V.	G. T.	V.	G. T.	
2001	1,371	21,920,703	119	1,042,767	1,252	20,877,936
2002	1,764	29,501,874	201	1,980,906	1,563	27,520,968
2003	2,208	36,644,322	317	2,499,394	1,891	34,144,928
2004	2,476	42,992,935	473	2,439,657	2,003	40,553,278
2005	2,551	45,970,534	432	2,775,256	2,119	43,195,278
2006	2,480	48,335,727	244	2,537,218	2,236	45,798,509
2007	3,172	56,044,562	198	2,211,301	2,974	53,833,261
2008	3,025	54,825,457	99	1,089,860	2,926	53,735,597
2009	2,943	57,535,569	109	859,869	2,834	56,675,700
2010	2,869	57,105,381	138	1,280,329	2,731	55,825,052
2011	2,491	51,112,185	122	1,134,164	2,369	49,978,021
2012	2,437	52,143,234	119	1,045,506	2,318	51,097,728
一 月(Jan.)	179	3,974,759	9	68,928	170	3,905,831
二 月(Feb.)	200	4,216,144	10	96,307	190	4,119,837
三 月(Mar.)	225	4,710,126	9	113,689	216	4,596,437
四 月(Apr.)	222	4,737,819	9	103,299	213	4,634,520
五 月(May)	202	4,312,561	12	58,088	190	4,254,473
六 月(June)	180	3,627,792	9	102,826	171	3,524,966
七月(July)	171	3,975,306	12	79,145	159	3,896,161
八月(Aug.)	176	3,751,351	9	79,639	167	3,671,712
九月(Sep.)	188	4,270,996	11	105,090	177	4,165,906
十月(Oct.)	227	5,189,921	7	46,962	220	5,142,959
十一月(Nov.)	221	4,945,477	8	102,092	213	4,843,385
十二月(Dec.)	246	4,430,982	14	89,441	232	4,341,541

資料來源：麥寮工業區專用港管理股份有限公司。



### 3rd Statistics Tables

#### 一、Harbor Management

Table 1. Tonnage of Imports and Exports carried by Incoming and Outgoing Vessels

Unit : V. , Ton

出 港					
Outgoing					
總 計		國 內		國 外	
Total		Domestic		Foreign	
艘 次	總 噸 位	艘 次	總 噸 位	艘 次	總 噸 位
V.	G. T.	V.	G. T.	V.	G. T.
1,374	21,963,166	1,035	16,364,343	339	5,598,823
1,758	29,480,038	1,576	26,416,968	182	3,063,070
2,210	36,397,967	569	6,905,358	1,641	29,492,609
2,469	43,162,045	903	11,998,188	1,566	31,163,857
2,549	46,033,186	488	6,159,527	2,061	39,873,659
2,480	48,094,049	234	2,318,874	2,246	45,775,175
3,176	55,968,701	206	2,707,465	2,970	53,261,236
3,025	55,161,194	103	1,647,650	2,922	53,513,544
2,937	57,542,817	122	1,028,836	2,815	56,513,981
2,875	57,165,600	136	1,351,187	2,739	55,814,413
2,483	51,040,986	115	1,242,957	2,368	49,798,029
2,440	51,873,091	125	1,097,510	2,315	50,775,581
181	3,945,362	10	96,000	171	3,849,362
199	3,991,922	13	98,018	186	3,893,904
233	4,845,630	9	112,979	224	4,732,651
218	4,808,976	8	84,037	210	4,724,939
198	4,238,824	12	100,299	186	4,138,525
180	3,686,965	6	94,626	174	3,592,339
174	3,980,190	12	71,384	162	3,908,806
172	3,500,191	8	60,382	164	3,439,809
191	4,409,010	13	103,375	178	4,305,635
228	5,130,872	9	93,312	219	5,037,560
216	4,816,817	9	61,283	207	4,755,534
250	4,518,332	16	121,815	234	4,396,517



## 附表二 進 港 輪 船 國 籍

總噸位單位：噸

年 (月) 別 Year and Month	總 計 Total		巴 拿 馬 Panama		中 華 民 國 R.O.C		香 港 Hong Kong	
	艘次 No. of Vessels	總噸位 G. T.	艘次 No. of Vessels	總噸位 G. T.	艘次 No. of Vessels	總噸位 G. T.	艘次 No. of Vessels	總噸位 G. T.
	2001	1,371	21,920,703	555	9,399,523	109	1,040,744	106
2002	1,764	29,501,874	640	11,731,225	162	1,841,138	50	1,314,824
2003	2,208	36,644,322	763	12,058,096	298	2,687,272	117	1,703,546
2004	2,476	42,992,935	702	9,784,951	463	2,745,771	154	1,768,672
2005	2,551	45,970,534	703	10,159,490	414	2,727,265	212	3,070,868
2006	2,480	48,335,727	722	11,870,852	223	2,169,971	200	3,079,916
2007	3,172	56,044,562	1,001	15,276,041	160	1,845,671	201	5,313,733
2008	3,025	54,825,457	935	15,104,336	97	1,102,133	243	7,237,228
2009	2,943	57,535,569	754	12,941,788	109	967,852	376	9,006,375
2010	2,869	57,105,381	642	11,587,768	148	1,430,540	579	9,624,392
2011	2,491	51,112,185	521	9,279,356	133	1,281,149	446	6,307,484
2012	2,437	52,143,234	374	6,993,865	134	1,142,073	445	6,154,151
一 月(Jan.)	179	3,974,759	33	477,871	9	68,928	37	493,607
二 月(Feb.)	200	4,216,144	29	497,748	10	96,307	49	892,466
三 月(Mar.)	225	4,710,126	41	623,672	12	147,142	44	659,364
四 月(Apr.)	222	4,737,819	34	576,496	11	108,257	37	412,520
五 月(May)	202	4,312,561	29	676,814	13	73,427	34	405,894
六 月(June)	180	3,627,792	21	519,875	9	81,116	36	429,635
七月(July)	171	3,975,306	27	571,484	11	54,113	33	484,708
八月(Aug.)	176	3,751,351	30	696,986	9	62,866	31	253,164
九月(Sep.)	188	4,270,996	25	317,113	13	126,998	32	545,296
十月(Oct.)	227	5,189,921	36	886,965	9	68,870	35	573,472
十一月(Nov.)	221	4,945,477	39	685,608	12	117,932	35	442,336
十二月(Dec.)	246	4,430,982	30	463,233	16	136,117	42	561,689

資料來源：麥寮工業區專用港管理股份有限公司



**Table 2. Number of Incoming Vessels by Registered Nationality**

Unit : Vessel;Ton

新加坡 Singapore		南 韓 Rep. Of Korea		賴比瑞亞 Liberia		其 他 Others	
艘次 No. of Vessels	總噸位 G. T.	艘次 No. of Vessels	總噸位 G. T.	艘次 No. of Vessels	總噸位 G. T.	艘次 No. of Vessels	總噸位 G. T.
80	1,364,884	155	540,676	113	2,153,091	253	6,301,355
132	2,156,932	258	805,547	121	2,207,414	401	9,444,794
127	2,916,450	252	958,336	118	3,255,363	533	13,065,259
192	4,529,051	185	871,648	229	9,538,582	551	13,754,260
321	7,109,280	246	1,176,695	221	10,340,691	434	11,386,245
250	4,477,255	280	1,416,734	329	12,625,913	476	12,695,086
314	4,739,115	509	2,217,131	359	10,699,151	628	15,953,720
290	5,223,831	473	2,380,343	292	8,553,342	695	15,224,244
272	5,275,676	333	1,340,747	294	10,798,873	805	17,204,258
253	5,319,623	292	1,862,746	222	10,631,574	733	16,648,738
217	5,113,297	196	1,251,014	228	11,831,554	750	16,048,331
197	3,820,661	136	757,618	282	16,720,978	869	16,553,888
15	353,141	7	88,106	23	1,183,600	55	1,309,506
20	368,022	10	61,989	21	1,437,784	61	861,828
18	356,677	14	103,608	21	1,071,462	75	1,748,201
24	402,471	13	71,871	17	1,079,405	86	2,086,799
13	208,693	18	72,271	24	1,576,850	71	1,298,612
15	255,853	9	44,124	18	1,096,931	72	1,200,258
6	75,060	10	47,996	21	1,348,438	63	1,393,507
11	341,643	11	43,576	19	1,325,927	65	1,027,189
17	390,196	11	61,725	26	1,492,216	64	1,337,452
17	294,643	10	48,754	36	2,006,129	84	1,311,088
17	367,286	8	35,564	29	1,686,509	81	1,610,242
24	406,976	15	78,034	27	1,415,727	92	1,369,206





### 附表三 進 港 輪 船 種 類

單位：艘次

年 (月) 別	總計	油輪	液化輪	貨櫃輪	化學輪
Year and Month	Total	Tankers	Liquid Chemical Tankers	Containers	Chemical Tankers
2001	1,371	298	12	135	702
2002	1,764	490	4	213	818
2003	2,208	1,054	506	223	208
2004	2,476	1,358	597	217	35
2005	2,551	1,433	602	193	18
2006	2,480	1,501	399	246	14
2007	3,172	1,857	683	222	53
2008	3,025	1,348	869	183	80
2009	2,943	1,003	393	238	631
2010	2,869	941	375	253	795
2011	2,491	797	290	197	788
2012	2,437	795	248	113	892
一 月(Jan.)	179	55	16	9	69
二 月(Feb.)	200	63	18	13	74
三 月(Mar.)	225	61	28	16	89
四 月(Apr.)	222	79	26	10	75
五 月(May)	202	61	23	7	77
六 月(June)	180	59	15	2	71
七月(July)	171	52	9	4	70
八月(Aug.)	176	59	16	2	68
九月(Sep.)	188	65	16	4	72
十月(Oct.)	227	71	37	6	76
十一月(Nov.)	221	86	21	17	68
十二月(Dec.)	246	84	23	23	83

資料來源：麥寮工業區專用港管理股份有限公司



**Table 3. Number of Incoming Vessels by Kind**

				Unit : Vessel
一般貨輪	散裝輪	煤炭輪	其 他	
Ordinary Cargoes	Cargos in Bulk	COAL	Others	
55	50	102	17	
47	55	69	68	
99	47	29	42	
97	55	58	59	
119	80	64	42	
134	99	47	40	
134	143	38	42	
121	163	26	235	
448	166	8	56	
283	161	3	58	
219	145	8	47	
179	135	9	66	
12	12	1	5	
16	12	1	3	
13	13	-	5	
14	13	1	4	
16	12	-	6	
18	9	1	5	
17	13	-	6	
16	10	1	4	
12	11	-	8	
20	9	2	6	
11	12	1	5	
14	9	1	9	



## 附表四 進 港 輪 船 航 次

單位：航次

年 (月) 別 Year and Month	國內							
	總計	小計	Domestic					其他
			高雄	台中	台北	基隆		
<u>Total</u>	<u>Sub Total</u>	<u>Kaohsiung</u>	<u>Taichung</u>	<u>Taipei</u>	<u>Keelung</u>	<u>Others</u>		
2001	1,371	119	29	15	21	41	13	
2002	1,764	201	45	34	64	17	41	
2003	2,208	317	64	11	125	20	97	
2004	2,476	473	106	18	75	26	248	
2005	2,551	432	64	6	61	19	282	
2006	2,480	244	42	5	81	18	98	
2007	3,172	198	59	4	78	12	45	
2008	3,025	99	36	1	34	8	20	
2009	2,943	109	48	2	2	6	51	
2010	2,869	138	65	4	7	28	34	
2011	2,491	122	50	3	9	9	51	
2012	2,437	119	55	2	4	5	53	
一月(Jan.)	179	9	5	-	1	-	3	
二月(Feb.)	200	10	3	1	-	1	5	
三月(Mar.)	225	9	4	-	-	-	5	
四月(Apr.)	222	9	4	-	-	2	3	
五月(May)	202	12	8	-	1	-	3	
六月(June)	180	9	3	-	-	1	5	
七月(July)	171	12	7	-	1	-	4	
八月(Aug.)	176	9	3	-	-	-	6	
九月(Sep.)	188	11	6	-	-	1	4	
十月(Oct.)	227	7	2	-	-	-	5	
十一月(Nov.)	221	8	3	-	-	-	5	
十二月(Dec.)	246	14	7	1	1	-	5	

資料來源：麥寮工業區專用港管理股份有限公司



Table 4. Number of Incoming Vessels by Line of Navigation

Unit : Voyage / Unit : Voyage

小計	國					外			
	香港	日本	南韓	菲律賓	澳洲	沙烏地阿 拉伯 Saudi Arabia	越南	印尼	其他
Sub Total	Hong kong	Japain	Korea	Philippine	Australia	a	Vietnam	Indonesia	Others
1,252	179	655	229	26	27	30	7	13	86
1,563	400	551	304	24	31	31	20	9	193
1,891	738	281	372	86	46	52	25	17	274
2,003	669	268	426	140	88	86	20	25	281
2,119	583	371	470	76	83	87	45	34	370
2,236	589	399	445	87	93	120	57	61	385
2,974	856	551	688	117	111	128	77	52	394
2,926	951	482	604	111	114	180	94	43	347
2,834	723	279	451	115	123	128	82	56	877
2,731	591	140	371	119	122	152	50	43	1,143
2,369	459	102	277	130	97	108	47	39	1,110
2,318	305	59	245	128	92	107	53	32	1,297
170	26	8	14	10	10	9	1	5	87
190	33	3	20	9	6	7	3	3	106
216	37	8	32	11	7	7	5	1	108
213	34	6	17	12	7	12	5	3	117
190	18	8	23	11	10	14	3	2	101
171	16	3	18	6	6	8	12	1	101
159	12	-	24	8	9	8	6	2	90
167	17	4	11	9	7	6	5	1	107
177	17	6	15	9	9	7	5	3	106
220	21	6	16	13	6	11	2	4	141
213	38	4	29	13	8	11	3	5	102
232	36	3	26	17	7	7	3	2	131





## 附表五 出 港 輪 船 航 次

單位：航次

年 (月) 別 Year and Month	國 內						
	Domestic						
	總計	小計	高雄	台北	台中	基隆	其他
	Total	Sub Total	Kaohsiung	Taipei	Taichung	Keelung	Others
2001	1,374	1,035	3	3	11	21	997
2002	1,758	1,576	8	11	33	6	1,518
2003	2,210	569	79	96	4	1	389
2004	2,469	903	111	67	6	5	714
2005	2,549	488	69	67	5	2	345
2006	2,480	234	98	39	7	-	90
2007	3,176	206	91	67	2	5	41
2008	3,025	103	84	2	2	1	14
2009	2,937	122	79	3	3	8	29
2010	2,875	136	72	1	2	26	35
2011	2,483	115	60	-	2	1	52
2012	2,440	125	74	-	2	-	49
一 月(Jan.)	181	10	7	-	-	-	3
二 月(Feb.)	199	13	9	-	-	-	4
三 月(Mar.)	233	9	5	-	-	-	4
四 月(Apr.)	218	8	3	-	-	-	5
五 月(May)	198	12	6	-	-	-	6
六 月(June)	180	6	3	-	-	-	3
七月(July)	174	12	8	-	-	-	4
八月(Aug.)	172	8	4	-	1	-	3
九月(Sep.)	191	13	10	-	-	-	3
十月(Oct.)	228	9	6	-	-	-	3
十一月(Nov.)	216	9	5	-	-	-	4
十二月(Dec.)	250	16	8	-	1	-	7

資料來源：麥寮工業區專用港管理股份有限公司



**Table 5. Number of Outgoing Vessels by Line of Navigation**

Unit : Voyage										
國 外										
Foreign										
小計	日本	香港	南韓	新加坡	澳洲	菲律賓	越南	馬來西亞	沙烏地阿拉伯	其他
Sub Total	Japain	Hong kong	Korea	Singapore	Australia	Philippine	Vietnam	Malaysia	Saudi arabia	Others
339	186	52	59	16	4	2	2	-	2	16
182	16	89	31	15	-	6	5	3	7	10
1,641	108	726	296	65	49	101	26	26	63	181
1,566	226	509	279	63	74	121	25	47	80	142
2,061	318	693	338	160	81	97	53	23	67	231
2,246	306	801	364	193	78	87	74	25	81	237
2,970	430	1,067	546	219	83	114	76	46	102	287
2,922	398	1,146	401	247	79	117	75	23	148	288
2,815	265	769	333	251	95	155	90	20	121	716
2,739	207	487	320	280	115	125	72	27	137	969
2,368	158	322	230	335	96	157	75	27	96	872
2,315	108	192	168	337	106	156	110	37	106	995
171	11	17	9	26	10	15	3	2	9	69
186	11	25	15	28	8	13	5	2	8	71
224	13	21	27	27	9	12	9	3	11	92
210	13	23	16	37	7	13	12	4	9	76
186	7	11	21	30	10	8	11	4	11	73
174	4	7	9	29	8	7	12	3	9	86
162	6	6	10	27	13	8	10	2	7	73
164	8	10	14	20	7	12	7	-	6	80
178	5	8	11	24	7	12	13	7	11	80
219	10	13	13	32	10	16	9	3	9	104
207	11	21	13	32	10	18	9	3	9	81
234	9	30	10	25	7	22	10	4	7	110



附表六 進港輪船噸級與在港停泊時間

單位：艘次；噸

停泊時間 Mooring's Time	輪 船				
	合計Total	Classification of			
	艘次 No. of Vessels	未滿1000噸 Under1,000G.T.	1,000-4,999噸 1,000-4,999G.T.	5,000-9,999噸 5,000-9,999G.T.	10,000-19,999噸 10,000-19,999G.T.
24小時以內 Under 24hours	1,010	73	469	239	118
25-48小時 25-48hours	995		243	252	101
49-72小時 49-72hours	228		22	55	74
73-96小時 73-96hours	97		8	15	23
97-120小時 97-120hours	50		1	1	12
121-144小時 121-144hours	27		1	2	3
145-168小時 145-168hours	11				1
169-192小時 169-192hours	5				1
193小時以上 over193hours	17		1		1
年(月)別 Year and Month					
2001	1,371	69	628	196	174
2002	1,764	129	677	318	288
2003	2,208	243	870	284	352
2004	2,476	298	913	267	404
2005	2,551	238	939	364	393
2006	2,480	139	881	328	408
2007	3,172	82	1,368	576	334
2008	3,025	92	1,285	528	297
2009	2,943	72	1,079	619	331
2010	2,869	79	883	740	353
2011	2,491	66	718	628	361
2012	2,437	68	743	566	334
一月(Jan.)	179	6	47	42	23
二月(Feb.)	200	6	53	52	30
三月(Mar.)	225	4	70	52	38
四月(Apr.)	222	4	74	51	19
五月(May)	202	9	59	50	28
六月(June)	180	4	56	44	21
七月(July)	171	8	52	38	19
八月(Aug.)	176	4	62	41	21
九月(Sep.)	188	7	57	39	27
十月(Oct.)	227	4	71	49	34
十一月(Nov.)	221	4	59	54	36
十二月(Dec.)	246	8	83	54	38



**Table 6. Number of Incoming Vessels by Gross Tonnage And Time of Vessels Mooring in Port**

Unit : Vessels;Ton

噸 位 分 類				平均停泊時間(天) Average Mooring's Time(Day)
Vessels' Gross Tonnage				
20,000-39,999噸	40,000-59,999噸	60,000-99,999噸	滿100,000噸以上	
20,000-39,999G.T.	40,000-59,999G.T.	60,000-99,999G.T.	Over100,000G.T.	
80	28	3		0.62
234	76	22	67	1.44
27	20	17	13	2.44
7	9	35		3.43
6	5	23	2	4.46
5	1	13	2	5.45
1	1	8		6.65
1		3		7.63
	1	12	2	10.81
159	75	47	23	1.67
170	63	70	49	1.36
237	71	86	65	1.21
341	87	91	75	1.24
361	80	88	88	1.30
463	94	82	85	1.25
463	139	115	95	1.27
450	183	100	90	1.28
456	186	102	98	1.31
413	186	129	86	1.33
364	161	120	73	1.54
360	142	137	87	1.48
31	13	12	5	1.49
30	14	8	7	1.58
29	12	13	7	1.39
36	17	15	6	1.41
22	15	10	9	1.48
29	12	9	5	1.53
25	8	13	8	1.65
24	6	11	7	1.65
28	10	12	8	1.59
32	13	15	9	1.45
36	11	12	9	1.39
38	11	7	7	1.30





附表七 進出港貨物國輪外輪承運量

單位：公噸

年 (月) 別 Year and Month	總 計 Total			
	國 內 Domestic		國 外 Foreign	
	國輪	外輪	國輪	外輪
	Domestic V.	Foreign V.	Domestic V.	Foreign V.
2001	697,005	69,885	102,428	25,450,728
2002	1,204,083	93,651	307,286	32,657,186
2003	2,406,163	3,626	665,865	40,111,760
2004	2,692,184	97,637	402,932	49,695,779
2005	2,681,181	2,695	198,222	55,259,819
2006	2,436,106	1,771	52,560	56,764,224
2007	1,880,616	65,620	7,771	67,939,596
2008	602,519	-	231,435	68,346,541
2009	479,961	46,009	167,193	69,698,054
2010	743,974	61,375	115,897	66,982,935
2011	618,654	151,808	87,321	59,487,365
2012	500,327	163,843	255,040	63,788,577
一 月(Jan.)	53,857	-	-	4,780,774
二 月(Feb.)	55,690	-	-	5,221,748
三 月(Mar.)	79,665	-	4,219	5,595,194
四 月(Apr.)	53,113	8,952	32,000	5,496,207
五 月(May)	51,143	28,324	5,050	5,428,265
六 月(June)	16,624	31,479	26,950	4,084,317
七月(July)	12,895	30,009	36,324	5,227,118
八月(Aug.)	18,921	12,013	20,950	4,923,111
九月(Sep.)	23,363	10,097	20,255	5,346,508
十月(Oct.)	30,556	42,969	44,952	6,541,353
十一月(Nov.)	26,912	-	28,227	6,043,110
十二月(Dec.)	77,588	-	36,113	5,100,872

資料來源：麥寮工業區專用港管理股份有限公司



**Table 7. Tonnage of Imports & Exports Carried by Domestic and Foreign Vessels**

Unit : M.T.

進		港		出		港	
Import				Export			
國內		國外		國內		國外	
Domestic		Foreign		Domestic		Foreign	
國輪	外輪	國輪	外輪	國輪	外輪	國輪	外輪
Domestic V.	Foreign V.	Domestic V.	Foreign V.	Domestic V.	Foreign V.	Domestic V.	Foreign V.
96,168	-	6,366	22,229,919	600,837	69,885	96,062	3,220,809
45,629	-	65,847	26,302,254	1,158,454	93,651	241,439	6,354,932
50,564	-	430,827	31,583,522	2,355,599	3,626	235,038	8,528,238
112,594	-	184,888	39,008,826	2,579,590	97,637	218,044	10,686,953
131,616	-	69,535	41,164,939	2,549,565	2,695	128,687	14,094,880
66,156	-	-	42,081,790	2,369,950	1,771	52,560	14,682,434
42,350	-	-	49,454,178	1,838,266	65,620	7,771	18,485,418
22,800	-	231,435	47,148,952	579,719	-	-	21,197,589
17,341	-	5,783	48,268,482	462,620	46,009	161,410	21,429,572
11,302	-	4,853	48,075,276	732,672	61,375	111,044	18,907,659
35,872	-	18,087	42,808,579	582,782	151,808	69,234	16,678,786
34,536	-	2,002	45,199,323	465,791	163,843	253,038	18,589,254
-	-	-	3,287,143	53,857	-	-	1,493,631
-	-	-	3,836,942	55,690	-	-	1,384,806
-	-	-	3,782,376	79,665	-	4,219	1,812,818
11,500	-	-	3,959,325	41,613	8,952	32,000	1,536,882
-	-	-	4,181,392	51,143	28,324	5,050	1,246,873
-	-	-	2,914,215	16,624	31,479	26,950	1,170,102
-	-	-	3,822,890	12,895	30,009	36,324	1,404,228
11,501	-	-	3,491,271	7,420	12,013	20,950	1,431,840
-	-	-	3,671,941	23,363	10,097	20,255	1,674,567
-	-	2,002	4,653,112	30,556	42,969	42,950	1,888,241
-	-	-	4,178,999	26,912	-	28,227	1,864,111
11,535	-	-	3,419,717	66,053	-	36,113	1,681,155



## 附表八 進 港 貨 物 （地區別）

單位：公噸

年 (月) 別 Year and Month	國 內					
	總 計	小 計	花 蓮	蘇 澳	高 雄	其 他
	<u>Total</u>	<u>Sub Total</u>	<u>Hualien</u>	<u>Suauo</u>	<u>Kaohsiung</u>	<u>Others</u>
2001						
2002						
2003						
2004	39,039,900	112,594	112,405	-	189	-
2005	38,666,233	131,616	120,005	11,501	110	-
2006	42,147,951	66,156	65,906	-	250	-
2007	49,496,526	42,350	34,301	-	8,049	-
2008	47,403,187	22,800	22,800	-	-	-
2009	48,291,607	17,341	11,301	-	3,131	2,909
2010	48,091,430	11,302	11,302	-	-	-
2011	42,862,537	35,872	23,003	-	-	12,869
2012	45,235,863	34,536	34,536	-	-	-
一 月(Jan.)	3,287,144	-	-	-	-	-
二 月(Feb.)	3,836,943	-	-	-	-	-
三 月(Mar.)	3,782,376	-	-	-	-	-
四 月(Apr.)	3,970,824	11,500	11,500	-	-	-
五 月(May)	4,181,391	-	-	-	-	-
六 月(June)	2,914,216	-	-	-	-	-
七 月(July)	3,822,890	-	-	-	-	-
八 月(Aug.)	3,502,772	11,501	11,501	-	-	-
九 月(Sep.)	3,671,940	-	-	-	-	-
十 月(Oct.)	4,655,115	-	-	-	-	-
十一月 (Nov.)	4,179,000	-	-	-	-	-
十二月 (Dec.)	3,431,252	11,535	11,535	-	-	-

資料來源：麥寮工業區專用港管理股份有限公司

**Table 8. Tonnage of Imports (by Region)**

Unit : M.T.

小計	Foreign									
	沙烏地阿拉伯	澳洲	科威特	中國大陸	伊 朗	阿 曼	阿拉伯聯合大公國	印尼	伊拉克	其 他
Sub Total	Saudi arabia	Australia	Kuwait	China mainland	Iran	Oman	UAE	Indonesia	Iraq	Others
38,927,306	9,937,993	6,518,872	5,728,593	5,835,742	2,488,635	1,110,456	989,078	967,087	-	5,350,850
38,534,617	9,397,847	8,053,348	5,926,999	4,617,709	2,802,544	1,523,488	1,215,440	980,115	-	4,017,127
42,081,795	10,359,513	7,743,850	5,972,172	3,303,790	2,237,423	1,105,770	1,678,004	3,193,661	1,742,009	4,745,603
49,454,176	10,636,547	10,396,485	6,551,422	3,864,632	3,229,756	1,395,340	1,634,974	2,938,904	3,167,892	5,638,224
47,380,387	11,330,939	10,831,613	6,901,099	2,823,131	3,059,499	1,361,613	2,107,495	2,128,152	2,799,784	4,037,062
48,274,266	11,299,622	9,224,412	6,537,528	995,885	839,101	2,443,997	1,741,698	2,786,044	4,414,702	7,991,277
48,080,128	10,512,341	8,363,512	6,437,002	680,054	944,870	1,678,995	1,938,966	1,736,894	2,913,919	12,873,575
42,826,665	8,576,460	6,920,413	6,310,330	418,094	899,983	496,051	1,902,473	1,849,274	559,750	14,893,837
45,201,327	8,545,109	5,913,064	7,473,517	387,929	628,079	2,257,558	1,895,016	2,401,952	3,256,354	12,442,749
3,287,144	357,759	939,545	273,190	46,009	34,664	132,879	231,696	66,407	273,637	931,358
3,836,943	824,073	396,223	613,601	6,220	140,742	-	213,500	140,041		1,502,543
3,782,376	724,150	255,967	940,435	64,547	138,175	138,209	215,142	138,300		1,167,451
3,959,324	660,856	357,889	580,340	47,357	14,892	189,456	78,705	155,995	-	1,873,834
4,181,391	753,211	629,269	536,184	1,955	-	156,956	235,444	153,999	539,404	1,174,969
2,914,216	590,318	475,416	619,157	24,887	-	273,866	168,802	159,649	-	602,121
3,822,890	794,365	375,081	607,181	48,652	12,440	9,750	169,473	401,602	264,604	1,139,742
3,491,271	580,428	445,356	688,349	29,291	-	217,742	56,366	23,476	534,136	916,127
3,671,940	700,074	518,667	544,728	29,324	-	276,450	124,711	244,388	279,627	953,971
4,655,115	960,817	478,545	573,389	37,965	16,461	324,660	242,577	413,759	832,868	774,074
4,179,000	633,993	784,672	1,145,516	27,718	-	269,540	132,402	349,337	261,811	574,011
3,419,717	965,065	256,434	351,447	24,004	270,705	268,050	26,198	154,999	270,267	832,548

附表九 出 港 貨 物 (地區別)

單位：公噸

年 (月) 別 Year and Month	國內						
	總 計 <u>Total</u>	小 計 <u>Sub Total</u>	高 雄 <u>Kaohsiung</u>	台 北 <u>Taipei</u>	蘇 澳 <u>Suauo</u>	金 門 <u>Kin Men</u>	其 他 <u>Others</u>
2001							
2002							
2003							
2004	12,732,276	2,677,226	1,042,225	865,093	245,620	36,889	487,399
2005	16,238,493	2,544,987	1,745,019	552,503	117,365	44,994	85,106
2006	17,106,717	2,371,720	982,727	950,429	293,658	41,516	103,390
2007	20,397,075	1,903,888	191,066	1,371,077	207,043	11,106	123,596
2008	21,777,308	579,718	135,272	119,925	198,945	-	125,576
2009	22,099,608	508,627	138,788	13,531	178,803	-	177,505
2010	19,812,748	794,046	94,355	27,158	442,835	8,343	221,355
2011	17,482,609	734,589	118,674	16,099	435,112	-	164,704
2012	19,471,922	629,632	108,056	10,470	395,521	-	115,585
一 月(Jan.)	1,547,488	53,857	5,131	10,470	36,767	-	1,489
二 月(Feb.)	1,440,496	55,690	32,401	-	20,653	-	2,636
三 月(Mar.)	1,896,701	79,665	5,140	-	74,525	-	
四 月(Apr.)	1,619,448	50,565	5,013	-	25,818	-	19,734
五 月(May)	1,331,391	79,467	9,921	-	38,289	-	31,257
六 月(June)	1,245,155	48,103	-	-	31,479	-	16,624
七月(July)	1,483,455	42,904	9,977	-	30,009	-	2,918
八月(Aug.)	1,472,222	19,432	5,046	-	12,013	-	2,373
九月(Sep.)	1,728,282	33,460	9,939	-	22,096	-	1,425
十月(Oct.)	2,004,714	73,524	10,051	-	40,740	-	22,733
十一月(Nov.)	1,919,249	26,912	5,028	-	10,571	-	11,313
十二月(Dec.)	1,783,321	66,053	10,409	-	52,561	-	3,083

資料來源：麥寮工業區專用港管理股份有限公司





**Table 9. Tonnage of Exports (by Region)**

Unit : M.T. Unit : M.T.									
國 外									
Foreign									
小 計	新加坡	中國大陸	菲律賓	美國	澳洲	印尼	香港	越南	其他
Sub Total	Singapore	China mainland	Philippine	United States	Australia	Indonesia	Hong kong	Vietnam	Others
10,055,050	1,607,450	2,321,149	1,545,807	968,526	586,238	60,360	1,166,288	-	1,799,232
13,693,506	2,835,727	2,660,494	1,698,645	1,160,177	831,573	672,875	586,622	-	3,247,393
14,734,997	3,046,986	2,950,357	1,082,112	849,629	1,305,700	642,518	663,592	1,556,389	2,637,714
18,493,187	3,500,386	4,493,062	1,594,111	1,034,871	1,780,948	571,537	677,434	1,911,893	2,928,945
21,197,590	4,033,206	6,639,235	1,173,748	729,939	1,482,649	809,143	348,332	1,979,365	4,001,973
21,590,981	2,586,354	5,645,336	1,884,106	985,313	1,133,237	1,416,779	702,650	1,968,193	5,269,013
19,018,702	2,911,250	5,420,436	1,850,026	677,894	972,573	1,655,019	545,449	1,179,653	3,806,402
16,748,020	2,792,847	4,516,875	1,833,483	451,362	996,955	818,625	882,038	1,250,721	3,205,114
18,842,290	4,424,542	4,662,780	3,139,983	462,303	889,843	691,498	805,829	1,305,396	2,460,116
1,493,631	368,716	401,443	244,165	30,649	111,000	65,706	40,369	45,175	186,408
1,384,806	148,395	400,020	321,004	27,620	63,500	59,500	41,858	83,928	238,981
1,817,036	314,919	437,191	205,732	67,261	55,500	37,419	84,093	154,358	460,563
1,568,883	404,800	336,938	289,412		102,996	34,531	31,760	117,740	250,706
1,251,924	241,204	325,770	190,957	37,492	8,400	5,924	39,370	120,893	281,914
1,197,052	226,492	360,201	154,927	10,132	121,947	33,428	46,106	129,214	114,605
1,440,551	422,693	357,469	158,137	26,250	113,250	2,586	123,069	128,665	108,432
1,452,790	346,004	395,855	266,572	80,575	-	82,607	42,141	116,532	122,504
1,694,822	499,185	319,052	250,425	98,229	63,900	70,411	37,635	196,660	159,325
1,931,190	522,301	451,173	356,481	33,375	106,300	79,864	148,594	55,747	177,355
1,892,337	533,274	373,172	389,249	41,900	76,900	145,671	82,281	99,282	150,608
1,717,268	396,559	504,496	312,922	8,820	66,150	73,851	88,553	57,202	208,715



附表十 進 港 貨 物 分 類 (按 月)

單位：公噸

年 (月) 別 Year and Month	總 計 Total	礦 產 品 Minerals					
		煤 Coal & Coke	鐵 礦 砂 Iron Ore	土、石、砂 礫 Sand & Gravel	硫 磺 Sulphur	粗 鹽 Salt	其 他 Others
2001	21,862,645	9,550,636	-	-	-	809,479	-
2002	26,112,303	8,312,020	-	-	-	864,124	111,770
2003	30,726,933	9,186,476	-	25,486	-	1,057,068	46,253
2004	39,039,900	12,172,091	-	162,380	-	1,403,019	139,234
2005	38,666,233	11,994,071	-	164,738	-	1,237,660	156,379
2006	42,147,947	12,490,414	-	447,450	-	1,743,925	100,483
2007	49,496,527	15,240,616	-	578,233	-	1,699,685	72,198
2008	47,403,188	13,185,738	-	437,432	-	2,226,171	27,940
2009	48,291,606	13,340,191	-	352,208	-	1,632,852	21,692
2010	48,091,428	13,740,729	-	329,128	-	1,821,464	27,095
2011	42,862,538	12,922,261	-	260,799	-	1,722,395	17,543
2012	45,235,860	12,978,908	-	300,876	-	1,794,245	23,767
一 月(Jan.)	3,287,142	1,027,323	-	46,009	-	143,614	-
二 月(Feb.)	3,836,942	1,073,277	-	-	-	209,844	3,310
三 月(Mar.)	3,782,376	1,136,510	-	45,940	-	72,600	-
四 月(Apr.)	3,970,824	1,085,003	-	22,784	-	211,759	2,006
五 月(May)	4,181,391	1,313,999	-	-	-	144,265	1,955
六 月(June)	2,914,215	708,254	-	23,183	-	210,513	1,704
七月(July)	3,822,889	1,571,502	-	46,647	-	70,200	2,005
八月(Aug.)	3,502,773	1,102,528	-	23,302	-	139,273	4,213
九月(Sep.)	3,671,941	1,165,243	-	23,326	-	72,600	-
十月(Oct.)		1,101,333	-	23,367	-	117,637	2,713
十一月(Nov.)		1,038,072	-	23,307	-	211,760	4,411
十二月(Dec.)		655,864	-	23,011	-	190,180	1,450

資料來源：麥寮工業區專用港管理股份有限公司

Table 10. Classification of Imports (by Month)

Unit : M.T.

非金屬礦物製品 Non-metalic Mineral Products			
汽、柴、燃料油 Gasoline, Diesel, Fuel Oil	原油 Grude Oil	輕油 Naphtha	其他 Others
-	-	-	10,981,472
-	-	-	15,819,147
-	15,442,885	3,445,306	80,629
-	19,786,495	3,441,305	560,565
-	20,439,568	2,469,388	535,310
36,629	22,076,578	3,049,811	604,229
-	23,788,323	5,303,729	602,331
-	23,187,786	6,284,727	458,045
2,909	24,318,216	6,485,165	704,600
-	22,299,715	7,639,160	416,349
66,292	19,454,259	6,140,506	710,131
-	21,773,269	6,391,800	367,489
-	1,215,571	658,856	22,970
-	1,856,613	528,710	23,247
-	1,800,919	569,220	22,528
-	1,618,555	842,724	22,866
-	1,881,986	693,263	50,996
-	1,360,824	345,603	132,066
-	1,642,770	347,182	42,786
-	1,902,801	173,875	42,830
-	1,902,327	388,686	-
-	2,543,936	696,681	-
-	2,161,021	611,967	7,200
-	1,885,946	535,033	-

附表十 進 港 貨 物 分 類 (按 月) (續 完)

單位：公噸

年 (月) 別 Year and Month	化 學 品 Chemical Products			基 本 金 屬 Basic Metal	
	肥 料 Fertilizer	動 植 物 性 油 脂 Animal & Vegetable Grease	其 他 Others	鋼 鐵 Iron & Steel	廢 鐵 Iron & Steel Scrap
2001	-	-	494,438	-	-
2002	-	-	995,195	-	-
2003	-	-	1,442,304	-	-
2004	-	-	1,232,141	-	-
2005	-	-	1,378,237	-	-
2006	-	-	1,586,764	-	-
2007	-	-	2,142,588	-	-
2008	-	-	1,595,062	-	-
2009	-	-	1,416,932	-	-
2010	-	-	1,804,662	-	-
2011	-	-	1,470,673	-	-
2012	-	-	1,566,478	-	-
一 月 (Jan.)	-	-	172,799	-	-
二 月 (Feb.)	-	-	141,941	-	-
三 月 (Mar.)	-	-	130,659	-	-
四 月 (Apr.)	-	-	153,627	-	-
五 月 (May)	-	-	94,927	-	-
六 月 (June)	-	-	132,068	-	-
七 月 (July)	-	-	99,797	-	-
八 月 (Aug.)	-	-	102,450	-	-
九 月 (Sep.)	-	-	119,759	-	-
十 月 (Oct.)	-	-	169,449	-	-
十 一 月 (Nov.)	-	-	120,769	-	-
十 二 月 (Dec.)	-	-	128,233	-	-

資料來源：麥寮工業區專用港管理股份有限公司

**Table 10. Classification of Imports (by Month)**

Unit : M.T.

基本金屬 Basic Metal		金屬製品 Metal Products			其他什貨
其他	機件	電器機械器材	其他		
Others	Grude Oil	Electrical Machinery, Apparatus	Others	General Merchandise	
-	-	-	-	26,620	
-	-	-	10,047	-	
-	-	-	-	526	
-	1,272	-	-	141,398	
-	6,965	408	110	283,399	
-	11,252	-	58	354	
-	614	-	-	68,210	
-	-	-	287	-	
-	178	-	1,196	15,467	
-	1,132	-	431	11,563	
-	736	-	418	96,525	
-	492	-	-	38,536	
-	-	-	-	-	
-	-	-	-	-	
-	-	-	-	4,000	
-	-	-	-	11,500	
-	-	-	-	-	
-	-	-	-	-	
-	-	-	-	-	
-	-	-	-	11,501	
-	-	-	-	-	
-	-	-	-	-	
-	492	-	-	-	
-	-	-	-	11,535	

附表十一 進 港 貨 物 分 類 (按碼頭)

單位：公噸

年 (月) 別 Year and Month	礦 產 品 Minerals						
	總 計 Total	煤 Coal & Coke	鐵 礦 砂 Iron Ore	土、石、砂 礫 Sand & Gravel	硫 磺 Sulphur	粗 鹽 Salt	其 他 Others
2001	21,862,645	9,550,636	-	-	-	809,479	-
2002	26,112,303	8,312,020	-	-	-	864,124	111,770
2003	30,726,933	9,186,476	-	25,486	-	1,057,068	46,253
2004	37,615,228	11,669,042	-	130,652	-	1,267,204	104,405
2005	41,992,805	12,321,245	-	197,997	-	1,317,494	120,406
2006	42,147,947	12,490,414	-	447,450	-	1,743,925	100,483
2007	49,496,527	15,227,086	-	578,233	-	1,699,685	72,198
2008	47,403,186	13,185,738	-	437,432	-	2,226,171	27,942
2009	48,291,606	13,340,191	-	352,208	-	1,632,852	21,692
2010	48,091,429	13,740,729	-	329,128	-	1,821,464	27,096
2011	42,862,538	12,922,261	-	260,799	-	1,722,395	17,543
2012	45,235,863	12,978,907	-	300,876	-	1,794,245	23,767
東1碼頭	2,900	-	-	-	-	-	2,408
東2碼頭	2,219,353	390,572	-	-	-	1,794,245	-
東3碼頭	7,106,220	7,106,220	-	-	-	-	-
東4碼頭	5,482,115	5,482,115	-	-	-	-	-
東5碼頭	326,235	-	-	300,876	-	-	21,359
東6碼頭	223,508	-	-	-	-	-	-
東7碼頭	748,552	-	-	-	-	-	-
東8碼頭	2,136,786	-	-	-	-	-	-
東9N/S碼頭	63,840	-	-	-	-	-	-
東10N/S碼頭	326,363	-	-	-	-	-	-
北1碼頭	517,196	-	-	-	-	-	-
北2碼頭	368,908	-	-	-	-	-	-
北5碼頭	16,635	-	-	-	-	-	-
北6碼頭	-	-	-	-	-	-	-
北7碼頭	50,029	-	-	-	-	-	-
西1碼頭	323,749	-	-	-	-	-	-
西2碼頭	6,450,908	-	-	-	-	-	-
西3碼頭	18,872,566	-	-	-	-	-	-





**Table 11. Classification of Imports (by Wharf)**

Unit : M.T.

非金屬礦物製品 Non-metallic Mineral Products			
汽、柴、燃料油	原油	輕油	其他
Gasoline, Diesel, Fuel Oil	Grude Oil	Naphtha	Others
-	-	-	10,981,472
-	-	-	15,819,147
-	15,442,885	3,445,306	80,629
-	19,256,748	3,395,226	559,611
-	23,411,864	2,632,987	490,109
36,629	22,076,578	3,049,811	604,229
-	23,647,080	5,227,816	602,331
-	23,187,783	6,284,726	458,045
2,909	24,318,216	6,485,164	704,600
-	22,299,714	7,639,159	416,349
66,291	19,454,260	6,140,507	710,130
-	21,773,270	6,391,802	367,489
-	-	-	-
-	-	-	-
-	-	-	-
-	-	-	-
-	-	-	-
-	-	-	-
-	-	-	-
-	-	573,201	175,351
-	92,335	1,852,313	192,138
-	-	-	-
-	-	-	-
-	-	-	-
-	-	-	-
-	-	-	-
-	-	-	-
-	-	-	-
-	-	323,749	-
-	5,705,222	745,686	-
-	15,975,713	2,896,853	-



附表十一 進 港 貨 物 分 類 (按碼頭) (續完)

單位：公噸

年 (月) 別 Year and Month	化 學 品 Chemical Products			基 本 金 屬 Basic Metal	
	肥 料	動 植 物 性 油 脂	其 他	鋼 鐵	廢 鐵
	Fertilizer	Animal & Vegetable Grease	Others	Iron & Steel	Iron & Steel Scrap
2001	-	-	494,438	-	-
2002	-	-	995,195	-	-
2003	-	-	1,442,304	-	-
2004	-	-	1,106,384	-	-
2005	-	-	1,473,730	-	-
2006	-	-	1,586,764	-	-
2007	-	-	2,142,587	-	-
2008	-	-	1,595,062	-	-
2009	-	-	1,416,933	-	-
2010	-	-	1,804,664	-	-
2011	-	-	1,470,673	-	-
2012	-	-	1,566,479	-	-
東1碼頭	-	-	-	-	-
東2碼頭	-	-	-	-	-
東3碼頭	-	-	-	-	-
東4碼頭	-	-	-	-	-
東5碼頭	-	-	-	-	-
東6碼頭	-	-	223,508	-	-
東7碼頭	-	-	-	-	-
東8碼頭	-	-	-	-	-
東9N/S碼頭	-	-	63,840	-	-
東10N/S碼頭	-	-	326,363	-	-
北1碼頭	-	-	517,196	-	-
北2碼頭	-	-	368,908	-	-
北5碼頭	-	-	16,635	-	-
北6碼頭	-	-	-	-	-
北7碼頭	-	-	50,029	-	-
西1碼頭	-	-	-	-	-
西2碼頭	-	-	-	-	-
西3碼頭	-	-	-	-	-

資料來源：麥寮工業區專用港管理股份有限公司







附表十二 出 港 貨 物 分 類 (按 月)

年 (月) 別 Year and Month	總 計 Total	礦 產 品 Minerals		
		煤 Coal & Coke	鐵 礦 砂 Iron Ore	土、石、砂礫 Clay, Stone, Sand & Gravel
2001	4,179,533	-	-	-
2002	7,918,726	-	-	50
2003	10,670,493	-	-	-
2004	12,732,277	-	-	-
2005	16,238,492	-	-	-
2006	17,106,715	-	-	-
2007	20,397,076	-	-	-
2008	21,777,306	-	-	-
2009	22,099,608	-	-	-
2010	19,812,747	-	-	-
2011	17,482,614	-	-	-
2012	19,471,923	-	-	-
一 月(Jan.)	1,547,488	-	-	-
二 月(Feb.)	1,440,495	-	-	-
三 月(Mar.)	1,896,702	-	-	-
四 月(Apr.)	1,619,448	-	-	-
五 月(May)	1,331,390	-	-	-
六 月(June)	1,245,155	-	-	-
七 月(July)	1,483,456	-	-	-
八 月(Aug.)	1,472,223	-	-	-
九 月(Sep.)	1,728,281	-	-	-
十 月(Oct.)	2,004,715	-	-	-
十一 月(Nov.)	1,919,250	-	-	-
十二 月(Dec.)	1,783,320	-	-	-

資料來源：麥寮工業區專用港管理股份有限公司



**Table 12. Classification of Imports (by Month)**

單位：公噸					Unit : M.T.
礦 產 品 Minerals			非 金 屬 礦 物 製 品 Non-metalic Mineral Products		
硫 磺 Sulphur	粗 鹽 Salt	其 他 Others	汽、柴、燃料油 Gasoline, Diesel, Fuel Oil	其 他 Others	
-	-	-	1,393,605	647,888	
65,426	-	-	3,987,163	1,267,453	
103,316	-	-	6,785,856	646,945	
188,950	-	-	9,192,127	518,246	
238,759	-	-	11,584,666	713,673	
260,700	-	-	11,773,715	690,876	
295,000	-	-	12,649,199	943,722	
334,460	-	-	12,890,872	1,171,169	
367,100	-	-	13,381,360	1,103,819	
272,305	-	-	10,973,773	1,313,684	
154,150	-	-	9,802,513	1,378,095	
234,700	-	-	11,144,210	1,569,148	
16,500	-	-	843,155	107,225	
13,600	-	-	770,740	117,382	
16,500	-	-	1,001,787	155,119	
16,500	-	-	941,766	169,986	
30,000	-	-	667,534	129,685	
15,100	-	-	613,419	137,883	
-	-	-	857,160	89,199	
33,000	-	-	892,414	110,779	
-	-	-	1,158,483	104,098	
44,000	-	-	1,193,738	148,143	
33,000	-	-	1,247,560	127,837	
16,500	-	-	956,454	171,812	

附表十二 出 港 貨 物 分 類 (按 月) (續 完)

單位：公噸

年 (月) 別 Year and Month	化 學 品 Chemical Products			基 本 金 屬 Basic Metal	
	肥 料 Fertilizer	動 植 物 性 油 脂 Animal & Vegetable Grease	其 他 Others	鋼 鐵 Iron & Steel	廢 鐵 Iron & Steel Scrap
2001	-	-	2,128,272	-	-
2002	-	-	2,598,634	-	-
2003	-	-	3,128,210	-	-
2004	-	-	2,809,358	-	-
2005	-	-	3,663,692	-	-
2006	-	2,709	4,329,830	-	-
2007	-	3,226	6,201,806	-	-
2008	-	2,089	7,183,434	-	-
2009	-	155	7,097,754	-	-
2010	-	396	7,158,364	-	-
2011	-	92	6,028,802	-	-
2012	-	-	6,353,201	-	-
一 月(Jan.)	-	-	573,027	-	-
二 月(Feb.)	-	-	508,541	-	-
三 月(Mar.)	-	-	718,156	-	-
四 月(Apr.)	-	-	474,904	-	-
五 月(May)	-	-	488,815	-	-
六 月(June)	-	-	471,112	-	-
七 月(July)	-	-	528,609	-	-
八 月(Aug.)	-	-	422,649	-	-
九 月(Sep.)	-	-	459,108	-	-
十 月(Oct.)	-	-	582,586	-	-
十 一 月(Nov.)	-	-	496,052	-	-
十 二 月(Dec.)	-	-	629,642	-	-

資料來源：麥寮工業區專用港管理股份有限公司

**Table 12. Classification of Imports (by Month)**

Unit : M.T.

基本金屬 Basic Metal		金屬製品 Metal Products			其他什貨
其他 Others	機件 Grude Oil	電器機械器材 Electrical Machinery, Apparatus	其他 Others	General Merchandise	
9,768	-	-	-	-	-
-	-	-	-	-	-
-	-	-	-	-	6,166
-	5,132	-	-	-	18,464
-	2,591	-	1,820	-	33,291
-	374	-	-	-	48,511
1,002	493	-	-	-	302,629
-	1,613	-	-	-	193,669
-	2,064	-	-	-	147,356
-	196	-	-	-	94,029
-	-	-	-	-	118,962
-	1,266	-	-	-	169,398
-	99	-	-	-	7,482
-	-	-	-	-	30,232
-	-	-	-	-	5,140
-	-	-	-	-	16,292
-	-	-	-	-	15,356
-	-	-	-	-	7,641
-	-	-	-	-	8,488
-	-	-	-	-	13,381
-	1,167	-	-	-	5,425
-	-	-	-	-	36,248
-	-	-	-	-	14,801
-	-	-	-	-	8,912

附表十三 出 港 貨 物 分 類 (按碼頭)

單位：計費噸

年 (月) 別 Year and Month	礦 產 品 Minerals						非金屬礦物製品 Non-metallic Mineral Products	
	總 計	煤	土、石、砂礫	硫 磺	粗 鹽	其他	汽、柴、燃料油	其他
	Total	Coal & Coke	Clay, Stone, Sand & Gravel	Sulphur	Salt	Others	Gasoline, Diesel, Fuel Oil	Others
2001	4,179,533	-	-	-	-	-	1,393,605	647,888
2002	7,918,726	-	50	65,426	-	-	3,987,163	1,267,453
2003	10,670,493	-	-	103,316	-	-	6,785,856	646,945
2004	13,893,900	-	-	172,921	-	-	9,719,518	317,376
2005	16,918,407	-	-	220,731	-	-	12,030,309	504,290
2006	17,106,715	-	-	260,700	-	-	11,773,715	690,876
2007	20,397,078	-	-	295,000	-	-	12,649,200	943,722
2008	21,777,307	-	-	334,460	-	-	12,890,870	1,171,168
2009	22,099,610	-	-	367,100	-	-	13,381,359	1,103,821
2010	19,812,747	-	-	272,305	-	-	10,973,772	1,313,685
2011	17,482,611	-	-	154,150	-	-	9,802,512	1,378,095
2012	19,471,927	-	-	234,700	-	-	11,144,213	1,569,147
東1碼頭	659,312	-	-	234,700	-	-	-	-
東2碼頭	520,640	-	-	-	-	-	-	-
東3碼頭	-	-	-	-	-	-	-	-
東4碼頭	-	-	-	-	-	-	-	-
東5碼頭	439,174	-	-	-	-	-	-	230,950
東6碼頭	1,584,802	-	-	-	-	-	13,557	243,826
東7碼頭	4,200,804	-	-	-	-	-	2,866,125	381,951
東8碼頭	2,356,131	-	-	-	-	-	2,098,943	248,236
東9N/S碼頭	1,846,409	-	-	-	-	-	882,140	260,404
東10N/S碼頭	439,312	-	-	-	-	-	110,282	-
北1碼頭	758,688	-	-	-	-	-	-	-
北2碼頭	735,003	-	-	-	-	-	-	7,050
北5碼頭	336,910	-	-	-	-	-	-	196,730
北6碼頭	38,675	-	-	-	-	-	-	-
北7碼頭	382,901	-	-	-	-	-	-	-
西1碼頭	1,715,192	-	-	-	-	-	1,715,192	-
西2碼頭	3,457,974	-	-	-	-	-	3,457,974	-
西3碼頭	-	-	-	-	-	-	-	-

資料來源：麥寮工業區專用港管理股份有限公司







## 二、棧埠

### 附表十四 本港裝卸業者營運實績 (依公司別)

單位：計費噸						
年 (月) 別	總計	台塑公司	南亞公司	台化公司	台塑石化	麥寮汽電
Year and Month	Total	Formosa Plastics Corp.	Nan Ya Plastics Corp.	Formosa Chemicals & Fiber Corp.	Formosa Petro Chemical Corp.	Mailiao Power Corp.
2001	26,041,428	1,734,837	361,460	846,347	13,299,008	9,570,802
2002	34,030,979	2,148,008	353,687	1,341,265	21,442,904	8,318,320
2003	41,397,426	2,674,789	512,050	1,276,821	31,976,683	4,264,920
2004	51,509,127	2,878,148	951,710	1,165,175	41,212,559	4,595,606
2005	58,911,212	3,300,788	969,961	1,748,139	47,116,736	4,931,050
2006	60,204,848	4,180,307	1,008,421	1,834,079	47,282,406	5,016,540
2007	68,374,622	4,233,728	1,554,613	2,997,363	53,313,822	5,289,865
2008	69,806,005	4,902,732	1,751,868	2,956,767	55,066,752	4,243,481
2009	70,159,727	4,154,754	1,672,748	2,806,740	55,677,975	5,130,831
2010	68,089,719	4,323,088	1,720,225	3,228,921	52,997,135	4,903,530
2011	60,375,984	3,786,476	1,467,225	2,582,020	46,714,988	4,876,760
2012	64,590,642	3,765,659	1,424,195	2,817,131	50,200,160	5,314,721
一月(Jan.)	5,240,566	363,452	130,188	249,624	3,752,388	681,867
二月(Feb.)	5,049,744	317,523	134,105	273,791	3,686,939	571,953
三月(Mar.)	4,916,222	364,168	125,772	325,682	3,872,675	161,072
四月(Apr.)	6,619,289	376,923	129,044	216,726	5,384,749	411,646
五月(May)	5,416,456	210,609	84,585	239,225	4,146,222	649,936
六月(June)	3,825,770	200,840	152,467	228,918	2,873,288	283,781
七月(July)	5,620,899	479,873	100,217	228,644	4,011,700	708,901
八月(Aug.)	4,686,907	113,947	114,935	151,588	3,906,431	303,260
九月(Sep.)	5,076,359	275,826	95,333	180,988	4,131,378	307,920
十月(Oct.)	6,798,025	393,370	129,899	223,592	5,398,112	558,026
十一月(Nov.)	6,126,458	389,709	101,320	188,728	4,815,850	536,455
十二月(Dec.)	5,213,947	279,419	126,330	309,625	4,220,428	139,904

資料來源：麥寮工業區專用港管理股份有限公司





## 二、Stevedoring&Warehousing

**Table 14. Volume of Cargoes Handled by Stevedoring & Warehousing Companies**

Unit : Revenue Ton								
中塑油品	大連化工	長春樹脂	南中石化	台塑重工	台塑旭纖	台灣醋酸	台塑光電	其他
Simosa Oil Corp Ltd.	Dairen Chemical Corp.	Chang Chun Plastics Corp.	Nan Chung Petrochemical Corp.	Formosa Heavy Industries Corp.	Formosa Asahi Spandex CO. Ltd	Formosa Bp Chemicals Corp.	Formosa Plasma Display Corp.	Others
-	92,461	-	126,745	8,868	-	-	-	900
71,138	194,893	23,675	137,089	-	-	-	-	-
248,154	247,102	24,360	164,305	6,166	-	-	2,076	-
226,464	253,777	32,091	185,023	5,604	2,231	739	-	-
350,600	253,088	37,055	182,361	7,173	5,313	8,948	-	-
146,043	404,607	39,792	132,759	2,430	3,367	154,097	-	-
138,281	443,190	104,759	149,693	1,820	2,829	144,659	-	-
97,368	391,405	73,683	130,357	1,887	2,423	187,282	-	-
91,057	296,743	75,432	74,193	2,060	2,405	174,789	-	-
162,523	378,265	95,141	98,110	196	2,458	180,127	-	-
178,997	282,496	249,082	54,270	3,592	1,087	178,991	-	-
203,332	289,417	337,218	80,215	3,324	638	154,632	-	-
4,195	19,093	22,971	-	99	17	16,672	-	-
11,463	17,102	27,377	-	-	17	9,474	-	-
19,417	19,500	24,839	2,980	-	117	-	-	-
28,728	22,314	31,222	5,841	-	52	12,044	-	-
13,457	33,679	23,103	12,632	-	17	2,991	-	-
18,204	13,393	29,890	2,919	-	-	22,070	-	-
21,242	27,780	22,390	4,382	-	-	15,770	-	-
15,893	32,893	25,374	12,722	-	-	9,864	-	-
18,471	18,860	22,305	8,793	1,119	-	15,366	-	-
10,480	27,215	34,429	6,825	1,772	104	14,201	-	-
11,851	18,920	44,237	10,340	334	190	8,524	-	-
29,931	38,668	29,081	12,781	-	124	27,656	-	-



## 附表十五 裝卸貨物噸量

單位：計費噸

年(月)別 Year and Month	裝卸貨物噸量 Loading							
	總計 Total	合計 Total	什貨 General Cargoes	管道 Pipe	貨櫃 Containers	散貨 Bulk Cargoes	其他散裝 Others in Bulk	其他 Others
2001	26,041,428	4,178,784	293,580	3,527,883	357,321	-	-	-
2002	34,030,979	7,918,677	224,834	6,774,926	853,491	65,426	-	-
2003	41,397,426	10,670,493	200,319	9,425,168	941,690	-	103,316	-
2004	51,509,126	13,893,898	78,055	12,605,891	1,037,031	-	172,921	-
2005	58,911,212	16,918,407	135,989	15,627,469	934,218	-	220,731	-
2006	60,204,848	17,501,588	172,710	16,172,854	882,627	-	273,397	-
2007	68,374,622	20,373,429	290,359	18,885,774	924,074	-	273,222	-
2008	69,806,005	21,665,723	406,906	20,187,051	624,626	-	447,140	-
2009	70,159,727	21,639,950	440,360	20,017,457	623,627	-	558,506	-
2010	68,089,719	19,843,095	515,846	18,270,920	589,240	-	467,089	-
2011	60,375,984	17,506,100	515,992	16,255,605	339,266	-	395,237	-
2012	64,590,642	19,151,873	373,823	18,042,618	280,487	-	454,945	-
一月(Jan.)	5,240,566	1,515,549	45,599	1,436,834	16,616	-	16,500	-
二月(Feb.)	5,049,744	1,442,286	40,500	1,342,161	31,777	-	27,848	-
三月(Mar.)	4,916,222	1,851,574	29,000	1,755,490	36,284	-	30,800	-
四月(Apr.)	6,619,289	1,632,678	30,500	1,511,265	25,512	-	65,401	-
五月(May)	5,416,456	1,291,486	19,000	1,201,736	20,949	-	49,801	-
六月(June)	3,825,770	1,247,264	18,000	1,192,311	1,554	-	35,399	-
七月(July)	5,620,899	1,461,267	53,000	1,380,526	6,311	-	21,430	-
八月(Aug.)	4,686,907	1,458,660	50,000	1,341,819	3,042	-	63,799	-
九月(Sep.)	5,076,359	1,703,743	20,119	1,671,273	6,478	-	5,873	-
十月(Oct.)	6,798,025	1,904,100	46,771	1,759,151	21,528	-	76,650	-
十一月(Nov.)	6,126,458	1,907,606	13,334	1,807,806	46,469	-	39,997	-
十二月(Dec.)	5,213,947	1,735,660	8,000	1,642,246	63,967	-	21,447	-

資料來源：麥寮工業區專用港管理股份有限公司



**Table 15. Volume of Cargoes Handled**

Unit : Revenue Ton

卸 貨							
Unloading							
合 計	散貨-工鹽	散貨-燃煤	其他散裝	管 道	什 貨	貨 櫃	其 他
Total	Salt	Coal	Other Cargoes in Bulk	Pipe	General Cargoes	Containers	Others
21,862,644	809,479	9,550,634	71,672	11,404,239	26,620	-	-
26,112,302	864,124	8,312,020	111,771	16,789,864	34,523	-	-
30,726,933	1,057,068	9,186,479	71,739	20,383,154	26,417	2,076	-
37,615,228	1,267,204	11,669,042	235,055	24,299,356	144,571	-	-
41,992,805	1,306,192	12,321,246	329,703	27,983,648	52,016	-	-
42,703,260	1,817,708	12,683,935	405,580	27,746,569	49,468	-	-
48,001,193	1,698,714	14,052,202	458,389	31,755,007	36,881	-	-
48,140,282	2,229,605	13,469,664	443,998	31,991,580	5,435	-	-
48,519,777	1,653,261	13,642,516	338,586	32,861,109	24,305	-	-
48,246,624	1,827,364	13,290,129	365,791	32,734,353	28,987	-	-
42,869,884	1,861,659	12,711,049	306,936	27,964,963	25,277	-	-
45,438,769	1,721,704	13,247,936	339,560	30,105,210	24,359	-	-
3,725,017	143,639	1,489,573	22,446	2,069,359	-	-	-
3,607,458	139,110	1,163,844	23,576	2,277,618	3,310	-	-
3,064,648	143,340	409,542	45,960	2,465,806	-	-	-
4,986,611	211,764	1,697,454	38,316	3,037,082	1,995	-	-
4,124,970	71,667	1,386,563	-	2,664,783	1,957	-	-
2,578,506	72,603	447,754	23,185	2,034,964	-	-	-
4,159,632	280,721	1,673,906	46,670	2,154,625	3,710	-	-
3,228,247	-	959,887	34,808	2,229,322	4,230	-	-
3,372,616	139,277	745,064	23,343	2,464,932	-	-	-
4,893,925	190,239	1,497,922	23,382	3,179,634	2,748	-	-
4,218,852	211,762	1,221,299	23,313	2,758,686	3,792	-	-
3,478,287	117,582	555,128	34,561	2,768,399	2,617	-	-



附表十六 裝卸貨物效率

年(月)別 Year and Month	合 計 Total		散 貨-工 鹽 Bulk Cargoes		散 貨-燃 煤 Bulk Cargoes		其 他 散 裝 Other Cargoes in Bulk	
	裝量/工時	卸量/工時	裝量/工時	卸量/工時	裝量/工時	卸量/工時	裝量/工時	卸量/工時
	V./H.	V./H.	V./H.	V./H.	V./H.	V./H.	V./H.	V./H.
2001	424	502	-	745	-	1,165	-	256
2002	445	573	-	839	-	1,463	-	255
2003	384	669	-	835	-	1,705	297	421
2004	319	591	-	800	-	1,698	279	223
2005	334	552	-	694	-	1,491	313	224
2006	313	549	-	705	-	1,511	278	216
2007	318	622	-	758	-	1,666	292	406
2008	321	714	-	757	-	1,849	274	423
2009	315	696	-	757	-	1,837	271	412
2010	320	674	-	762	-	1,770	258	371
2011	321	682	-	759	-	1,781	261	411
2012	318	694	-	760	-	1,800	268	396
一 月(Jan.)	315	663	-	760	-	1,810	266	410
二 月(Feb.)	320	730	-	763	-	1,805	271	405
三 月(Mar.)	314	729	-	755	-	1,812	269	400
四 月(Apr.)	318	717	-	766	-	1,766	260	398
五 月(May)	315	654	-	760	-	1,815	259	385
六 月(June)	321	734	-	770	-	1,813	277	410
七 月(July)	317	782	-	751	-	1,815	270	409
八 月(Aug.)	318	637	-	-	-	1,799	270	388
九 月(Sep.)	320	723	-	758	-	1,783	272	397
十 月(Oct.)	315	649	-	760	-	1,765	266	379
十一月(Nov.)	320	654	-	755	-	1,810	269	380
十二月(Dec.)	318	661	-	761	-	1,807	271	388

資料來源：麥寮工業區專用港管理股份有限公司





**Table 16. Efficiency of Cargoes Handled**

管 道 Pipe		什 貨 General Cargoes		貨 櫃 Containers		其 他 Others	
裝量/工時 V./H.	卸量/工時 V./H.	裝量/工時 V./H.	卸量/工時 V./H.	裝量/工時 V./H.	卸量/工時 V./H.	裝量/工時 V./H.	卸量/工時 V./H.
693	650	155	170	-	26	-	-
734	673	156	178	-	32	-	-
681	639	174	169	-	32	-	-
782	623	171	127	29	38	-	-
784	624	163	145	35	44	-	-
759	625	162	130	37	46	-	-
741	631	186	152	34	43	-	-
735	614	235	190	35	45	-	-
735	616	222	318	33	44	-	-
746	621	214	240	33	44	-	-
754	635	218	322	33	43	-	-
752	628	218	316	32	44	-	-
742	619	220	331	33	45	-	-
753	631	221	-	33	45	-	-
735	635	219	-	32	43	-	-
770	611	211	-	32	46	-	-
753	620	218	305	31	40	-	-
760	633	215	-	33	42	-	-
745	623	220	310	33	-	-	-
750	641	219	311	31	45	-	-
759	629	217	-	33	46	-	-
741	625	221	320	32	42	-	-
760	620	220	315	32	45	-	-
755	645	212	321	33	45	-	-



## 附表十七 貨櫃裝卸量

單位：貨櫃：個  
貨物：公噸

年 (月) 別  Year and Month	總計		進 口			
	Grand Total		合 計 Total		20 呎 20 Ft.	
	櫃 數 No. of Container	TEU	實 櫃 Loaded Container	空 櫃 Empty Container	實 櫃 Loaded Container	空 櫃 Empty Container
2001	17,903	21,440	-	17,903	-	14,366
2002	39,471	47,070	-	39,471	-	31,872
2003	46,649	57,208	396	46,253	1	36,089
2004	48,670	59,576	-	48,670	-	37,764
2005	43,059	54,174	-	43,059	-	31,944
2006	42,729	53,306	-	42,729	-	32,152
2007	46,338	54,336	-	46,338	-	38,340
2008	30,808	36,672	-	30,808	-	24,944
2009	31,749	37,254	-	31,749	-	26,244
2010	29,096	34,848	-	29,096	-	23,344
2011	17,489	20,659	-	17,489	-	14,319
2012	13,923	16,457	-	13,923	-	11,389
一 月(Jan.)	596	792	-	596	-	400
二 月(Feb.)	1,578	1,664	-	1,578	-	1,492
三 月(Mar.)	1,461	1,691	-	1,461	-	1,231
四 月(Apr.)	1,126	1,359	-	1,126	-	893
五 月(May)	878	948	-	878	-	808
六 月(June)	-	-	-	-	-	-
七月(July)	-	-	-	-	-	-
八月(Aug.)	215	230	-	215	-	200
九月(Sep.)	707	812	-	707	-	602
十月(Oct.)	1,399	1,579	-	1,399	-	1,219
十一月(Nov.)	2,484	3,235	-	2,484	-	1,733
十二月(Dec.)	3,479	4,147	-	3,479	-	2,811

資料來源：麥寮工業區專用港管理股份有限公司。



**Table 17. Number of Containers Handled**

						Gargo - M.T.	
貨		櫃					
Incoming						貨物噸數	
35 呎 35 Ft.		40 呎 40 Ft.		45 呎 45 Ft.			
實 櫃	空 櫃	實 櫃	空 櫃	實 櫃	空 櫃		
Loaded Container	Empty Container	Loaded Container	Empty Container	Loaded Container	Empty Container	Cargo	Tonnage
-	-	-	3,537	-	-	-	-
-	-	-	7,599	-	-	-	-
-	-	395	10,164	-	-	2,076	-
-	-	-	10,906	-	-	-	-
-	-	-	11,115	-	-	-	-
-	-	-	10,577	-	-	-	-
-	-	-	7,998	-	-	-	-
-	-	-	5,864	-	-	-	-
-	-	-	5,505	-	-	-	-
-	-	-	5,752	-	-	-	-
-	-	-	3,170	-	-	-	-
-	-	-	2,534	-	-	-	-
-	-	-	196	-	-	-	-
-	-	-	86	-	-	-	-
-	-	-	230	-	-	-	-
-	-	-	233	-	-	-	-
-	-	-	70	-	-	-	-
-	-	-	-	-	-	-	-
-	-	-	-	-	-	-	-
-	-	-	15	-	-	-	-
-	-	-	105	-	-	-	-
-	-	-	180	-	-	-	-
-	-	-	751	-	-	-	-
-	-	-	668	-	-	-	-



附表十七 貨櫃裝卸量(續完)

單位：貨櫃：個  
貨物：公噸

年 (月) 別 Year and Month	總計		出 口			
	Grand Total		合 計 Total		20 呎 20 Ft.	
	櫃 數 No. of Container	TEU	實 櫃 Loaded Container	空 櫃 Empty Container	實 櫃 Loaded Container	空 櫃 Empty Container
2001	18,507	22,386	18,507	-	14,628	-
2002	44,282	52,638	44,282	-	35,926	-
2003	50,593	61,480	50,567	26	39,691	15
2004	52,876	64,790	52,803	73	40,934	28
2005	47,059	59,058	47,059	-	35,060	-
2006	45,430	55,804	45,046	384	34,813	243
2007	47,856	56,000	47,771	85	39,682	30
2008	31,908	38,113	31,855	53	25,662	41
2009	31,860	37,800	31,860	-	25,920	-
2010	30,463	36,761	30,463	-	24,165	-
2011	17,297	20,678	17,297	-	13,916	-
2012	13,958	16,317	13,958	-	11,599	-
一 月(Jan.)	900	998	900	-	802	-
二 月(Feb.)	1,665	1,875	1,665	-	1,455	-
三 月(Mar.)	1,845	2,169	1,845	-	1,521	-
四 月(Apr.)	1,265	1,478	1,265	-	1,052	-
五 月(May)	1,107	1,223	1,107	-	991	-
六 月(June)	87	87	87	-	87	-
七月(July)	339	361	339	-	317	-
八月(Aug.)	144	209	144	-	79	-
九月(Sep.)	336	354	336	-	318	-
十月(Oct.)	1,109	1,245	1,109	-	973	-
十一月(Nov.)	1,822	2,205	1,822	-	1,439	-
十二月(Dec.)	3,339	4,113	3,339	-	2,565	-

資料來源：麥寮工業區專用港管理股份有限公司。



**Table 17. Number of Containers Handled**

						Cargo - M.T.	
Outgoing		櫃				貨物噸數	
35 呎 35 Ft.		40 呎 40 Ft.		45 呎 45 Ft.		Cargo	Tonnage
實 櫃 Loaded Container	空 櫃 Empty Container	實 櫃 Loaded Container	空 櫃 Empty Container	實 櫃 Loaded Container	空 櫃 Empty Container		
-	-	3,879	-	-	-	357,320	
-	-	8,356	-	-	-	853,490	
-	-	10,876	11	-	-	941,690	
-	-	11,869	45	-	-	1,037,031	
-	-	11,999	-	-	-	934,218	
-	-	10,233	141	-	-	882,627	
-	-	8,089	55	-	-	924,074	
-	-	6,193	12	-	-	624,629	
-	-	5,940	-	-	-	623,627	
-	-	6,298	-	-	-	589,239	
-	-	3,381	-	-	-	339,264	
-	-	2,359	-	-	-	280,487	
-	-	98	-	-	-	16,615	
-	-	210	-	-	-	31,777	
-	-	324	-	-	-	36,285	
-	-	213	-	-	-	25,512	
-	-	116	-	-	-	20,950	
-	-	-	-	-	-	1,554	
-	-	22	-	-	-	6,311	
-	-	65	-	-	-	3,042	
-	-	18	-	-	-	6,477	
-	-	136	-	-	-	21,527	
-	-	383	-	-	-	46,469	
-	-	774	-	-	-	63,968	

## 附表十八 倉儲業務狀況

單位：公噸

年(月)別	期末倉棧總量 (A) Total Volume of Warehouse at the End of Year	本期進倉量 (B) Receiving	本期進倉量 (C) (不包括存放 貨櫃場部份) Receiving (Excluding Volume of Cargoes Stored in Container Vard	本期出倉量 Delivery	期末進倉量 (D) Remaining
Year and Month	(噸) (Ton)	(噸) (Ton)	(噸) (Ton)	(噸) (Ton)	(噸) (Ton)
2001					
2002					
2003					
2004					
2005					
2006					
2007					
2008					
2009					
2010					
2011					
2012					
一月(Jan.)					
二月(Feb.)					
三月(Mar.)					
四月(Apr.)					
五月(May)					
六月(June)					
七月(July)					
八月(Aug.)					
九月(Sep.)					
十月(Oct.)					
十一月(Nov.)					
十二月(Dec.)					



**Table 18. Volume of Warehousing**

Unit : M.T.

本期延日存倉量( E ) ( 不包括存放露 置場及貨櫃場部 份) Storage ( Including Volume of Cargoes Stored in Open Space)  ( 噸日 ) ( Ton - Day )	本期延日存倉量( F ) ( 不包括存放露 置場及貨櫃場部 份) Storage ( Excluding Volume of Cargoes Stored in Open Space)  ( 噸日 ) ( Ton - Day )	倉棧平均使用率 E / (Ax當月天數)  %	貨物平均存倉日數 E / (前一期之D+B) Average Cargo Remaining Days Per Ton  ( 日 ) ( Day )	貨物裝卸量(不包 括管道、貨櫃裝 卸)(G) Volume of Cargoes Handled(Excludeing Pipe & Container Cargoes)  ( 噸 ) ( Ton )	貨物進倉比率 C / G Percentage of Cargoes Stored  %
--	--	----------------------------------	---	---	---



三、航政監理  
附表十九 工業專用港區域海事案件

單位：艘數

年(月)別 Year and Month	Vessels of Ship - Wreck									
	合計 Total	碰 撞	觸 礁 或 擱 淺	失 火	爆 炸	洩 漏	傾 覆	機 械 故 障	非 常 變 故	其 他
2001										
2002										
2003	2	-	-	-	-	-	-	1	-	1
2004	3	1	-	-	-	1	-	-	1	-
2005	8	6	-	-	-	-	-	-	-	2
2006	3	1	-	-	-	-	-	-	-	2
2007	5	-	1	-	-	-	-	2	-	2
2008	4	3	-	-	-	-	-	-	-	1
2009	7	2	1	-	-	1	-	-	-	3
2010	5	3	-	-	-	-	-	1	-	1
2011	8	4	-	-	-	1	-	1	2	-
2012	-	-	-	-	-	-	-	-	-	-
一 月(Jan.)	-	-	-	-	-	-	-	-	-	-
二 月(Feb.)	-	-	-	-	-	-	-	-	-	-
三 月(Mar.)	-	-	-	-	-	-	-	-	-	-
四 月(Apr.)	-	-	-	-	-	-	-	-	-	-
五 月(May.)	-	-	-	-	-	-	-	-	-	-
六 月(June.)	-	-	-	-	-	-	-	-	-	-
七 月(July.)	-	-	-	-	-	-	-	-	-	-
八 月(Aug.)	-	-	-	-	-	-	-	-	-	-
九 月(Sep.)	-	-	-	-	-	-	-	-	-	-
十 月(Oct.)	-	-	-	-	-	-	-	-	-	-
十一 月(Nov.)	-	-	-	-	-	-	-	-	-	-
十二 月(Dec.)	-	-	-	-	-	-	-	-	-	-

資料來源：麥寮工業區專用港管理股份有限公司



**三、Supervising and Administering of navigation**  
**Table 19. Ship - Wreck**

Unit : Vessels

人 員 傷 亡 (人) Number of Casualties								船 體 損 害	
船 員 Seamen				旅 客 Casualties				船 損	船 沉
合 計 Total	負 傷	失 蹤 Missing	死 亡 Deae	合 計 Total	負 傷	失 蹤 Missing	死 亡 Deae		
2	-	-	2	-	-	-	-	-	-
1	-	-	1	-	-	-	-	2	-
-	-	-	-	-	-	-	-	4	-
3	3	-	-	-	-	-	-	1	-
-	-	-	-	-	-	-	-	3	-
3	2	1	-	-	-	-	-	2	-
1	-	-	1	-	-	-	-	4	-
-	-	-	-	1	1	-	-	5	-
2	2	-	-	-	-	-	-	4	-
-	-	-	-	-	-	-	-	-	-
-	-	-	-	-	-	-	-	-	-
-	-	-	-	-	-	-	-	-	-
-	-	-	-	-	-	-	-	-	-
-	-	-	-	-	-	-	-	-	-
-	-	-	-	-	-	-	-	-	-
-	-	-	-	-	-	-	-	-	-
-	-	-	-	-	-	-	-	-	-
-	-	-	-	-	-	-	-	-	-
-	-	-	-	-	-	-	-	-	-
-	-	-	-	-	-	-	-	-	-
-	-	-	-	-	-	-	-	-	-
-	-	-	-	-	-	-	-	-	-
-	-	-	-	-	-	-	-	-	-
-	-	-	-	-	-	-	-	-	-
-	-	-	-	-	-	-	-	-	-
-	-	-	-	-	-	-	-	-	-
-	-	-	-	-	-	-	-	-	-
-	-	-	-	-	-	-	-	-	-
-	-	-	-	-	-	-	-	-	-
-	-	-	-	-	-	-	-	-	-
-	-	-	-	-	-	-	-	-	-
-	-	-	-	-	-	-	-	-	-
-	-	-	-	-	-	-	-	-	-
-	-	-	-	-	-	-	-	-	-
-	-	-	-	-	-	-	-	-	-
-	-	-	-	-	-	-	-	-	-
-	-	-	-	-	-	-	-	-	-
-	-	-	-	-	-	-	-	-	-
-	-	-	-	-	-	-	-	-	-
-	-	-	-	-	-	-	-	-	-
-	-	-	-	-	-	-	-	-	-
-	-	-	-	-	-	-	-	-	-
-	-	-	-	-	-	-	-	-	-
-	-	-	-	-	-	-	-	-	-
-	-	-	-	-	-	-	-	-	-
-	-	-	-	-	-	-	-	-	-
-	-	-	-	-	-	-	-	-	-
-	-	-	-	-	-	-	-	-	-
-	-	-	-	-	-	-	-	-	-
-	-	-	-	-	-	-	-	-	-
-	-	-	-	-	-	-	-	-	-
-	-	-	-	-	-	-	-	-	-
-	-	-	-	-	-	-	-	-	-
-	-	-	-	-	-	-	-	-	-
-	-	-	-	-	-	-	-	-	-
-	-	-	-	-	-	-	-	-	-
-	-	-	-	-	-	-	-	-	-
-	-	-	-	-	-	-	-	-	-
-	-	-	-	-	-	-	-	-	-
-	-	-	-	-	-	-	-	-	-
-	-	-	-	-	-	-	-	-	-
-	-	-	-	-	-	-	-	-	-
-	-	-	-	-	-	-	-	-	-
-	-	-	-	-	-	-	-	-	-
-	-	-	-	-	-	-	-	-	-
-	-	-	-	-	-	-	-	-	-
-	-	-	-	-	-	-	-	-	-
-	-	-	-	-	-	-	-	-	-
-	-	-	-	-	-	-	-	-	-
-	-	-	-	-	-	-	-	-	-
-	-	-	-	-	-	-	-	-	-
-	-	-	-	-	-	-	-	-	-
-	-	-	-	-	-	-	-	-	-
-	-	-	-	-	-	-	-	-	-
-	-	-	-	-	-	-	-	-	-
-	-	-	-	-	-	-	-	-	-
-	-	-	-	-	-	-	-	-	-
-	-	-	-	-	-	-	-	-	-
-	-	-	-	-	-	-	-	-	-
-	-	-	-	-	-	-	-	-	-
-	-	-	-	-	-	-	-	-	-
-	-	-	-	-	-	-	-	-	-
-	-	-	-	-	-	-	-	-	-
-	-	-	-	-	-	-	-	-	-
-	-	-	-	-	-	-	-	-	-
-	-	-	-	-	-	-	-	-	-
-	-	-	-	-	-	-	-	-	-
-	-	-	-	-	-	-	-	-	-
-	-	-	-	-	-	-	-	-	-
-	-	-	-	-	-	-	-	-	-
-	-	-	-	-	-	-	-	-	-
-	-	-	-	-	-	-	-	-	-
-	-	-	-	-	-	-	-	-	-
-	-	-	-	-	-	-	-	-	-
-	-	-	-	-	-	-	-	-	-
-	-	-	-	-	-	-	-	-	-
-	-	-	-	-	-	-	-	-	-
-	-	-	-	-	-	-	-	-	-
-	-	-	-	-	-	-	-	-	-
-	-	-	-	-	-	-	-	-	-
-	-	-	-	-	-	-	-	-	-
-	-	-	-	-	-	-	-	-	-
-	-	-	-	-	-	-	-	-	-
-	-	-							





四、財務  
附表二十 營 業 總 收 入

單位：新台幣元

年 (月) 別	7=5+6	5=1+2+3+4	1
Year and Month	總 計 Grand Total	營 業 收 入 Operating Revenue	港 灣 設 施 使 用 收 入 Facilities Usage Revenue
2001	1,713,532,506	1,503,529,918	678,921,665
2002	2,114,443,106	1,931,886,166	969,599,978
2003	2,480,584,209	2,417,832,652	1,227,143,023
2004	3,062,894,485	2,988,776,216	1,511,159,274
2005	3,356,493,634	3,285,882,302	1,666,146,703
2006	3,430,154,796	3,382,657,949	1,719,710,703
2007	4,209,976,723	3,993,368,414	1,982,687,717
2008	4,044,733,179	3,958,382,250	2,015,268,804
2009	4,141,160,700	3,954,892,930	2,017,722,074
2010	4,102,496,618	4,018,819,093	1,949,872,975
2011	3,666,667,917	3,570,620,369	1,732,244,013
2012	4,109,789,714	3,759,718,826	1,829,916,856
一 月(Jan.)	297,109,986	294,785,230	157,857,083
二 月(Feb.)	287,339,072	287,290,466	129,476,607
三 月(Mar.)	369,641,218	363,283,172	176,252,447
四 月(Apr.)	335,265,434	332,307,113	161,398,313
五 月(May.)	598,585,962	310,456,864	164,898,476
六 月(June.)	276,289,000	267,822,784	125,315,792
七 月(July.)	311,652,038	309,082,498	147,049,051
八 月(Aug.)	275,400,330	271,393,521	127,702,645
九 月(Sep.)	334,923,216	324,091,824	168,684,728
十 月(Oct.)	372,790,395	368,496,391	180,623,727
十一月(Nov.)	361,523,647	352,136,245	171,908,905
十二月(Dec.)	289,269,416	278,572,718	118,749,082

資料來源：麥寮工業區專用港管理股份有限公司



四、Finance

Table 20. Total Operating Revenue

Unit : N T \$

2	3	4	6
港灣業務收入 Port Revenue	棧埠業務收入 Stevedoring & Warehousing Revenue	租金收入 Rent Revenue of Operating Assets	營業外收入 Non - Operating Revenue
129,158,163	695,450,090	-	210,002,588
149,644,590	812,641,598	-	182,556,940
163,040,374	1,027,649,255	-	62,751,557
190,961,727	1,286,655,215	-	74,118,269
210,673,015	1,409,062,584	-	70,611,332
224,626,821	1,438,320,425	-	47,496,847
279,545,337	1,731,135,360	-	216,608,309
269,659,269	1,673,454,177	-	86,350,929
271,211,173	1,665,959,683	-	186,267,770
273,834,416	1,795,111,702	-	83,677,525
262,261,469	1,576,114,887	-	96,047,548
258,964,607	1,670,837,363	-	350,070,888
22,944,520	113,983,627	-	2,324,756
19,523,542	138,290,317	-	48,606
24,649,908	162,380,817	-	6,358,046
23,097,670	147,811,130	-	2,958,321
21,093,124	124,465,264	-	288,129,098
18,713,154	123,793,838	-	8,466,216
19,741,909	142,291,538	-	2,569,540
18,432,187	125,258,689	-	4,006,809
22,880,424	132,526,672	-	10,831,392
26,014,324	161,858,340	-	4,294,004
23,128,235	157,099,105	-	9,387,402
18,745,610	141,078,026	-	10,696,698



## 附表二十一 營 業 總 支 出

單位：新台幣元

年 (月) 別	17=15+16	15=8+9+10+11+12+13+14	8	9	10
Year and Month	總 計 Grand Total	營 業 支 出 Operating Expense	港 灣 費 用 Port Expense	棧 埠 費 用 Stevedoring & Warehousing Expense	維 持 費 用 Command Expense
2001	1,342,041,944	1,007,047,993	-	633,034,287	-
2002	1,513,072,746	1,253,395,970	-	724,907,262	-
2003	1,776,135,585	1,542,378,958	489,572,751	846,578,123	-
2004	2,057,280,740	1,685,344,858	543,550,653	925,211,062	-
2005	1,828,340,397	1,750,994,466	576,109,936	981,350,944	-
2006	2,401,306,693	2,111,193,224	905,062,669	989,089,755	-
2007	2,550,049,377	2,367,194,764	944,246,643	1,106,659,306	-
2008	2,465,699,176	2,267,819,359	732,746,796	1,200,196,316	-
2009	2,423,886,449	2,372,903,738	912,031,004	1,239,716,920	-
2010	2,512,559,966	2,428,173,744	966,475,610	1,248,012,352	-
2011	2,547,996,901	2,481,267,557	996,579,878	1,272,738,738	-
2012	2,914,175,058	2,864,363,418	1,224,506,903	1,381,281,548	-
一 月(Jan.)	210,343,612	206,164,759	69,482,142	117,863,271	-
二 月(Feb.)	218,683,770	214,735,721	74,574,300	121,371,942	-
三 月(Mar.)	229,154,398	225,015,608	89,301,814	115,674,587	-
四 月(Apr.)	256,327,104	252,682,500	127,958,674	104,328,764	-
五 月(May.)	281,068,244	277,413,579	120,156,425	139,852,731	-
六 月(June.)	208,830,042	205,415,107	93,580,478	95,674,397	-
七 月(July.)	254,175,754	250,181,777	123,195,413	104,956,747	-
八 月(Aug.)	251,682,101	246,796,912	112,700,402	110,347,616	-
九 月(Sep.)	246,125,547	241,268,153	98,129,160	111,749,865	-
十 月(Oct.)	272,387,554	267,753,694	124,532,333	121,670,503	-
十一月(Nov.)	247,727,248	243,328,442	112,111,031	109,932,144	-
十二月(Dec.)	237,669,684	233,607,166	78,784,731	127,858,981	-

資料來源：麥寮工業區專用港管理股份有限公司



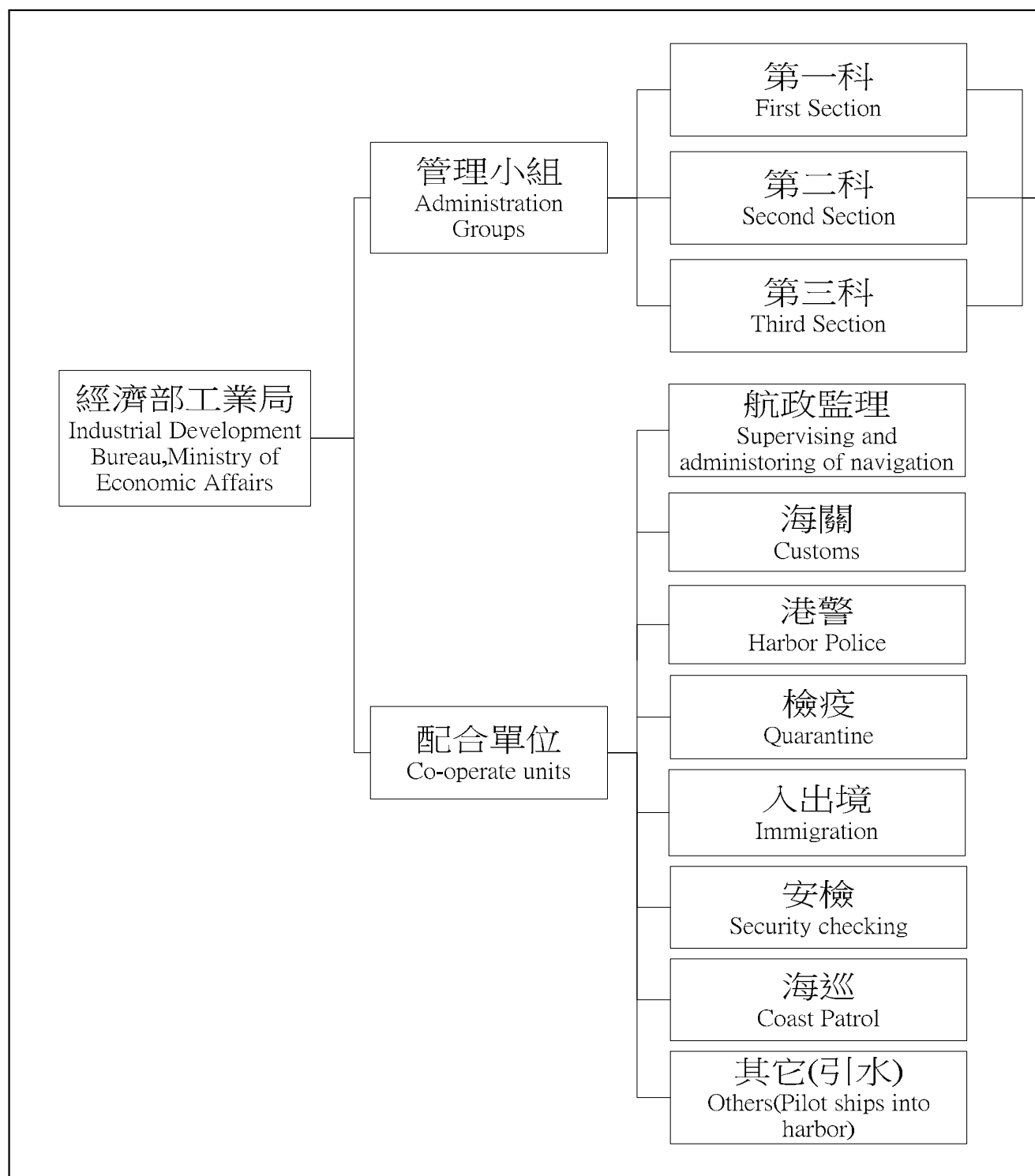
Unit : NT \$

11	12	13	14	16	18=7-17
其他營業費用 Other Operating Expense	業務費用 Business Expense	管理費用 Administration Expense	土地租金 Rent Expense	營業外支出 Non - Operating Expense	盈餘 Surplus
-	295,506,644	78,507,062	-	334,993,951	371,490,562
-	382,578,274	145,910,434	-	259,676,776	601,370,360
107,508,794	-	98,719,290	-	233,756,627	704,448,624
96,915,734	-	119,667,409	-	371,935,882	1,005,613,745
68,003,627	-	102,325,331	23,204,628	77,345,931	1,528,153,237
61,356,778	20,059,866	112,419,528	23,204,628	290,113,469	1,028,848,103
150,551,995	-	142,532,192	23,204,628	182,854,613	1,659,927,346
146,131,160	-	165,540,459	23,204,628	197,879,817	1,579,034,003
75,257,373	-	122,693,813	23,204,628	50,982,711	1,717,274,251
53,041,412	-	137,439,742	23,204,628	84,386,222	1,589,936,652
48,003,391	-	140,740,922	23,204,628	66,729,344	1,118,671,016
49,479,058	-	185,891,281	23,204,628	49,811,640	1,195,614,656
4,455,865	-	12,429,762	1,933,719	4,178,853	86,766,374
4,213,949	-	12,641,811	1,933,719	3,948,049	68,655,302
4,842,173	-	13,263,315	1,933,719	4,138,790	140,486,820
4,044,405	-	14,416,938	1,933,719	3,644,604	78,938,330
4,143,267	-	11,327,437	1,933,719	3,654,665	317,517,718
3,746,159	-	10,480,354	1,933,719	3,414,935	67,458,958
4,059,154	-	16,036,744	1,933,719	3,993,977	57,476,284
4,253,177	-	17,561,998	1,933,719	4,885,189	23,718,229
4,153,703	-	25,301,706	1,933,719	4,857,394	88,797,669
4,107,392	-	15,509,747	1,933,719	4,633,860	100,402,841
3,617,413	-	15,734,135	1,933,719	4,398,806	113,796,399
3,842,401	-	21,187,334	1,933,719	4,062,518	51,599,732





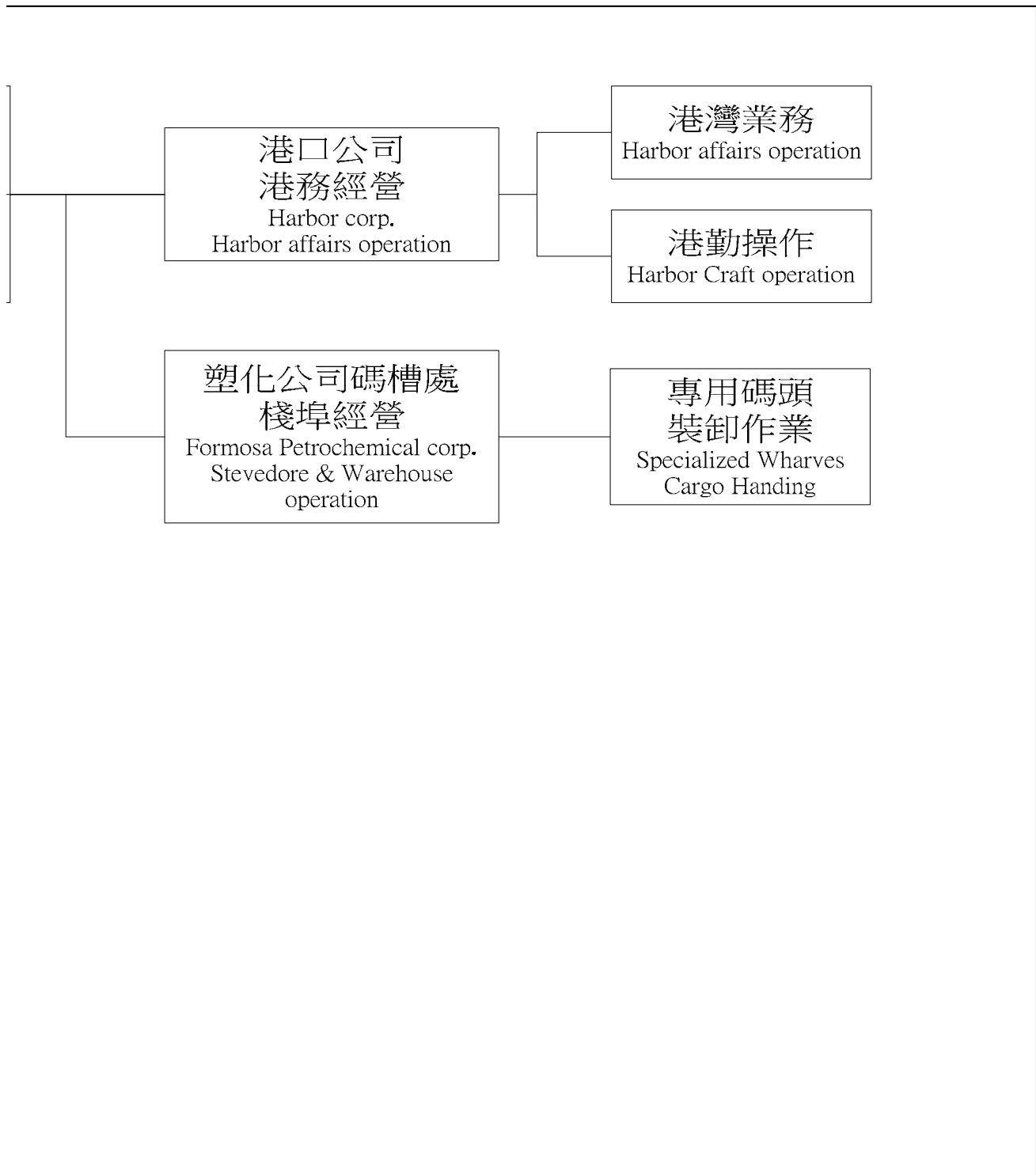
五、組織與人事  
附表二十二 港內各作業組織系統表





## 五、 Organization and Personnel matters

### Table 22. Organization Chart





附表二十三 港內作業人數（依組織別）

單位：人

年(底)別 End of Year	總計 Total		麥寮港管理小組 Mailiao Harbor Administration		民營事業 Harbor Operation Company	
	職員	工員	職員	工員	職員	工員
	Staff	Work Men	Staff	Work Men	Staff	Work Men
2001	402	6	4	6	38	-
2002	415	5	3	5	39	-
2003	455	5	2	5	39	-
2004	324	178	4	3	43	-
2005	313	191	10	-	43	-
2006	255	258	10	-	44	-
2007	279	268	9	-	41	-
2008	280	278	8	-	41	-
2009	249	316	8	-	42	-
2010	248	312	7	-	41	-
2011	272	328	7	-	41	-
2012	260	319	7	-	41	-



**Table 23. Number of Staff & Workmen of the Bureau and Branch Offices**

Unit : Person

港灣作業機構 Marine Service Org.		棧埠作業機構 Marine Terminal Org.		船舶機械修造工廠 Ship & Machinery Works	
職員	工員	職員	工員	職員	工員
Staff	Work Men	Staff	Work Men	Staff	Work Men
77	-	283	-	-	-
81	-	292	-	-	-
78	-	336	-	-	-
93	-	184	175	-	-
78	14	182	177	-	-
11	85	190	173	-	-
15	90	214	178	-	-
10	88	221	190	-	-
10	95	189	221	-	-
10	97	190	215	-	-
10	103	214	225	-	-
10	103	202	216	-	-





附表二十四 港內作業人員學歷（依組織別）

單位：人

年(底)別 End of Year	總計 Total		研究所 Graduate School		大學 Collage	
	男	女	男	女	男	女
	Male	Female	Male	Female	Male	Female
2001	397	11	7	-	38	3
2002	408	12	7	-	36	3
2003	446	14	7	-	35	4
2004	470	32	8	-	60	5
2005	466	38	6	1	57	8
2006	473	40	6	1	59	9
2007	501	46	6	1	59	9
2008	517	41	6	1	63	8
2009	525	40	7	2	66	7
2010	523	37	8	1	70	6
2011	563	37	10	-	74	6
2012	551	28	11	-	71	6
管理小組	5	2	2	-	3	2
民營事業	36	5	3	-	13	2
港灣作業機構	109	4	-	-	13	1
棧埠作業機構	401	17	6	-	42	1



**Table 24. Number of Staff by Education**

Unit : Person

專 科 Junior Collage		高 中 職 Senior High School		國 中 Junior High School		國 小 Primary School	
男	女	男	女	男	女	男	女
Male	Female	Male	Female	Male	Female	Male	Female
115	5	192	1	34	1	11	1
120	5	193	2	35	1	17	1
112	5	228	3	45	1	19	1
187	11	115	6	79	4	21	6
191	12	119	5	78	6	15	6
203	13	110	5	83	6	12	6
218	13	120	8	83	6	15	9
233	12	126	9	78	5	11	6
230	11	129	10	82	5	11	5
235	12	128	14	73	2	9	2
254	12	157	14	65	2	3	3
257	7	151	12	60	2	1	1
-	-	-	-	-	-	-	-
19	1	1	2	-	-	-	-
23	1	55	1	17	-	1	1
215	5	95	9	43	2	-	-



附表二十五 港內作業人員年齡（依組織別）

單位：人

年(底)別 End of Year	總計 Total		19歲以下 Age Under		20 - 24歲 Age		25 - 29歲 Age		30 - 34歲 Age		35 - 39歲 Age	
	男	女	男	女	男	女	男	女	男	女	男	女
	Male	Female	Male	Female	Male	Female	Male	Female	Male	Female	Male	Female
2001	397	11	-	-	38	2	136	8	96	-	66	1
2002	408	12	-	-	26	1	133	8	114	2	69	1
2003	446	14	-	-	41	1	143	9	121	3	73	1
2004	470	32	1	-	6	2	88	12	123	6	83	6
2005	466	38	1	-	6	2	85	12	116	10	76	7
2006	473	40	2	-	5	2	83	10	105	8	83	12
2007	501	46	1	-	4	2	88	11	107	9	92	13
2008	517	41	1	-	6	2	93	10	121	9	94	13
2009	525	40	1	-	4	2	93	9	125	8	93	13
2010	523	37	-	-	4	-	88	2	112	6	98	17
2011	563	37	-	-	13	-	108	2	122	5	96	15
2012	551	28	-	-	13	-	108	2	122	5	98	8
管理小組	5	2	-	-	-	-	-	-	-	1	3	-
民營事業	36	5	-	-	-	-	-	-	1	1	8	1
港灣作業機構	109	4	-	-	-	-	1	-	10	1	16	1
棧埠作業機構	401	17	-	-	13	-	107	2	111	2	71	6



**Table 25. Number of Staff by Age**

Unit : Person

40 - 44 歲 Age		45 - 49 歲 Age		50 - 54 歲 Age		55 - 59 歲 Age		60 - 64 歲 Age		65 歲以上 Age Over	
男	女	男	女	男	女	男	女	男	女	男	女
Male	Female	Male	Female	Male	Female	Male	Female	Male	Female	Male	Female
28	-	18	-	14	-	-	-	1	-	-	-
23	-	21	-	19	-	1	-	2	-	-	-
23	-	23	-	18	-	3	-	1	-	-	-
65	5	48	-	40	-	10	1	6	-	-	-
68	6	48	-	46	-	13	1	7	-	-	-
67	5	54	2	42	-	19	1	13	-	-	-
76	6	53	2	40	-	21	1	17	1	2	1
79	6	49	1	39	-	18	-	17	-	-	-
76	7	49	-	40	-	29	-	15	1	-	-
80	7	56	5	43	-	25	-	16	-	1	-
93	9	53	5	40	1	22	-	15	-	1	-
93	7	55	5	32	1	19	-	7	-	4	-
-	1	1	-	-	-	1	-	-	-	-	-
15	3	5	-	-	-	3	-	1	-	3	-
25	-	15	1	20	1	15	-	6	-	1	-
53	3	34	4	12	-	-	-	-	-	-	-





六、港埠設施  
附表二十六 機具、車、船（依組織別）

噸量單位：公噸  
總噸位單位：噸

年 (底) 別  End of Year	機									
	貨櫃起重機		跨載機		側跨機		貨櫃裝車機		貨櫃牽引機	
	Container Crane		Straddle Carrier		Lateral Straddle		Container Transfer Unit		Yard Tractor	
	台	噸量	台	噸量	台	噸量	台	噸量	台	噸量
	S.	Tonnage	S.	Tonnage	S.	Tonnage	S.	Tonnage	S.	Tonnage
2001	1	50	-	-	-	-	-	-	-	-
2002	1	50	-	-	-	-	-	-	-	-
2003	2	100	-	-	-	-	-	-	-	-
2004	2	100	-	-	-	-	-	-	-	-
2005	2	100	-	-	-	-	-	-	-	-
2006	2	100	-	-	-	-	-	-	-	-
2007	2	50	-	-	-	-	-	-	-	-
2008	2	50	-	-	-	-	-	-	-	-
2009	2	50	-	-	-	-	-	-	-	-
2010	2	50	-	-	-	-	-	-	-	-
2011	2	50	-	-	-	-	-	-	-	-
2012	2	50	-	-	-	-	-	-	-	-
管理小組	-	-	-	-	-	-	-	-	-	-
民營事業	-	-	-	-	-	-	-	-	-	-
港灣作業機構	-	-	-	-	-	-	-	-	-	-
棧埠作業機構	2	50	-	-	-	-	-	-	-	-



## 六、Harbor Facilities

### Table 26. Mechanical, Vehicular & Marine Equipment

Tonnage Unit : M.T.  
Gross Tonnage : Ton.

具 Mechanical Equipment											
貨櫃吊運機 Container Transtainer		貨櫃車架 Container Chassis		貨櫃側載機 Container Side Loader		空櫃推高機 Empty C. Fork Lift		起重機 Mobile Crane		推高機 Fork - Lift Truck	
台	噸量	台	噸量	台	噸量	台	噸量	台	噸量	台	噸量
S.	Tonnage	S.	Tonnage	S.	Tonnage	S.	Tonnage	S.	Tonnage	S.	Tonnage
2	40	-	-	-	-	1	8	-	-	1	2.5
2	40	-	-	-	-	1	8	1	40	1	2.5
4	80	-	-	-	-	2	16	1	40	1	2.5
4	80	-	-	-	-	2	16	1	40	6	38
4	80	-	-	-	-	2	16	1	40	14	39
4	80	-	-	-	-	2	16	1	40	14	39
4	80	-	-	-	-	2	16	3	46	15	20
4	80	-	-	-	-	2	16	3	46	15	20
4	80	-	-	-	-	2	16	1	40	15	20
4	80	-	-	-	-	2	16	1	40	14	15
4	80	-	-	-	-	2	16	1	40	14	15
4	80	-	-	-	-	2	16	1	40	14	15
-	-	-	-	-	-	-	-	-	-	-	-
-	-	-	-	-	-	-	-	-	-	-	-
-	-	-	-	-	-	-	-	-	-	-	-
4	80	-	-	-	-	2	16	1	40	14	15



附表二十六 機具、車、船（依組織別）（續完）

噸量單位：公噸  
總噸位單位：噸

年(底)別 End of Year	車 輛 Vehicular Equipment									
	拖 車		拖 板		卡車、工程車、清掃車		挖 泥 船		受 泥 船	
	Towing Tractor		Full Trailer		Truck		Dredger		Mud Boat	
	台 S.	噸量 Tonnage	台 S.	噸量 Tonnage	台 S.	噸量 Tonnage	艘 V.	總噸位 Tonnage	艘 V.	總噸位 Tonnage
2001	-	-	-	-	8	-	-	-	-	-
2002	-	-	-	-	8	-	-	-	-	-
2003	-	-	-	-	14	10	-	-	-	-
2004	13	39	10	35	20	7	-	-	-	-
2005	16	39	10	35	37	22	-	-	-	-
2006	16	39	10	35	29	33	4	5	-	-
2007	16	35	10	35	33	13	4	5	-	-
2008	16	35	10	35	31	11	4	5	-	-
2009	16	35	10	35	34	22	1	1,809	-	-
2010	16	35	10	35	32	15	1	1,809	-	-
2011	16	35	10	35	31	11	1	1,809	-	-
2012	16	35	10	35	31	11	1	1,809	-	-
管理小組	-	-	-	-	-	-	-	-	-	-
民營事業	-	-	-	-	-	-	-	-	-	-
港灣作業機構	-	-	-	-	2	7	1	1,809	-	-
棧埠作業機構	16	35	10	35	29	4	-	-	-	-









## 附表二十七 港埠工程

總長度單位：公尺  
有效容量單位：公噸  
繫泊能力單位：總噸  
堆儲量單位：公噸

年 (底) 別  End of Year	專 用 碼 頭 Wharves		倉 棧 Warehouse and Sheds		浮 筒 Bouys	
	座	總長度	座	總長度	座	總長度
	Set	T.L.	Set	T.L.	Set	T.L.
2001	17	4,666	-	-	-	-
2002	17	4,666	-	-	-	-
2003	17	4,666	-	-	-	-
2004	17	4,666	-	-	-	-
2005	17	4,666	-	-	-	-
2006	17	4,666	-	-	-	-
2007	19	5,326	-	-	-	-
2008	19	5,326	-	-	-	-
2009	19	5,326	-	-	-	-
2010	20	5,701	-	-	-	-
2011	20	5,701	-	-	-	-
2012	20	5,701	-	-	-	-









主管機關

## 經濟部工業局

台北市信義路三段 41-3 號

電話：(02)27541255 傳真：(02)27043757



管理單位

經濟部工業局麥寮工業專用港管理小組

雲林縣麥寮鄉台塑工業園區港務大樓四樓

電話：(05)6812533 傳真：(05)6812534



經營單位

麥寮工業區專用港管理股份有限公司

雲林縣麥寮鄉台塑工業園區一號

電話：(05)6812766 傳真：(05)6812135