

# 麥寮工業專用港

## 統計要覽

### STATISTICAL ABSTRACT OF MAILIAO HARBOR 2011

經濟部工業局編印

Complied By

Industrial Development Bureau  
Ministry of Economic Affairs  
Taiwan, Republic of China

中華民國一百零一年

# 目 錄

## Contents

	頁次 (page)
第一篇 基本概況 Basic Overview.....	1
第二篇 提要分析 Summary Analysis.....	3
第三篇 統計表 Statistics Tables	
一、港務 Harbor Management	
(一) 船舶 Vessels	
附表 1 進出港輪船地區 .....	22
Incoming and Outgoing Vessels by Area	
附表 2 進港輪船國籍 .....	24
Number of Incoming Vessels by Registered Nationality	
附表 3 進港輪船種類 .....	26
Number of Incoming Vessels by Kind	
附表 4 進港輪船航次 .....	28
Number of Incoming Vessels by Line of Navigation	
附表 5 出港輪船航次 .....	30
Number of Outgoing Vessels by Line of Navigation	
附表 6 進港輪船噸級與在港停泊時間 .....	32
Number of Incoming Vessels by Gross Tonnage and Time of Vessels Mooring in Port	
(二) 貨物 Cargoes	
附表 7 進出港貨物國輪外輪承運量 .....	34
Tonnage of Imports & Exports Carried by Domestic and Foreign Vessels	
附表 8 進港貨物(地區別) .....	36
Tonnage of Imports (by Region)	

# 目 錄

## Contents

	頁次 (page)
附表 9 出港貨物(地區別) .....	38
Tonnage of Exports (by Region)	
附表 10 進港貨物分類(按月) .....	40
Classification of Imports (by Month)	
附表 11 進港貨物分類(按碼頭) .....	44
Classification of Imports (by Wharf)	
附表 12 出港貨物分類(按月) .....	48
Classification of Exports (by Month)	
附表 13 出港貨物分類(按碼頭) .....	52
Classification of Exports (by Wharf)	
二、棧埠 Stevedoring & Warehousing	
附表 14 本港裝卸業者營運實績(依公司別).....	54
Volume of Cargoes Handled by Stevedoring & Warehousing Companies	
附表 15 裝卸貨物噸量 .....	56
Volume of Cargoes Handled	
附表 16 裝卸貨物效率 .....	58
Efficiency of Cargoes Handled	
附表 17 貨櫃裝卸量 .....	60
Number of Containers Handled	
附表 18 倉儲業務概況 .....	64
Volume of Warehousing	
三、航政監理 Supervising and Administering of navigation	
附表 19 工業專用港區域海事案件 Ship-Wreck...	66

# 目 錄

## Contents

頁次 (page)

四、財務 Finance	
附表 20 營業總收入 Total Operating Revenue...	68
附表 21 營業總支出 Total Operating Expense...	70
五、組織及人事 Organization and Personnel matters	
附表 22 港內各作業組織系統表 .....	72
Organization Chart	
附表 23 港內作業人數(依組織別) .....	74
Number of Staff & Workmen of the Bureau and Branch Offices	
附表 24 港內作業人員學歷(依組織別) .....	76
Number of Staff by Education	
附表 25 港內作業人員年齡(依組織別) .....	78
Number of Staff by Age	
六、港埠設施 Harbor Facilities	
附表 26 機具、車、船(依組織別) .....	80
Mechanical, Vehicular & Marine Equipment	
附表 27 港埠工程 .....	84
Harbor Construction	

## 第一篇 基本概況

### 一、港埠基本資料

經濟部為因應我國基礎工業之發展，配合六輕及六輕擴大投資計畫用地需求，以提供國內既有及未來石化產業建廠及遷廠需要，乃規劃於雲林縣外海以抽砂填海造地方式開發雲林離島式基礎工業區，共分有麥寮區、新興區、台西區及四湖區，其中麥寮區之六輕計畫石化工業區係由台塑企業自行進行抽砂填海造地，而麥寮工業專用港（以下簡稱麥寮港）內之專用碼頭，則全為配合六輕計畫所興建；未來配合開發進度，將再進行十座公用碼頭之興建並提供該工業區內廠商使用。

麥寮港為我國由民營事業投資興建及經營管理港口之首例，其港埠經營完全由台塑企業成立之麥寮工業區專用港管理股份有限公司（以下簡稱港口公司）負責，經濟部工業局於 89 年 10 月 1 日現地派駐成立麥寮工業專用港管理小組（以下簡稱管理小組），以最精簡人力有效扮演監督，執行具有公權力之港務行政管理及協調航政、海關、港警、檢疫及安檢等其他相關公務機關，順利於 90 年 2 月 22 日邀集交通部、財政部、內政部、國防部、海巡署、環保署、農委會及雲林縣政府等各機關現地履勘合格後，已於 90 年 3 月 1 日起開始正式營運。

麥寮港位於東經 120 度 08.9 分、北緯 23 度 46.9 分。北起濁水溪口南側，南臨新虎尾溪口，澎湖水道東側海岸。北距台中港約 40 哩，南離高雄港約 80 哩。港口方向朝西偏南 34°（約介於西南西與西南間），航道於中潮位水深 24 公尺，可供 30 萬噸級船舶進出，為台灣最深之港口。

## 二、港灣及碼頭

### (一)港灣設施

- (1)防波堤：西防波堤長 3,243 公尺，南防波堤長 2,227 公尺。
- (2)迴船池：直徑 900 公尺。
- (3)港外水域：劃設領港登輪區、外航道及到港船舶錨泊區。
- (4)導航設施：進港疊標、堤頭燈塔及航道浮燈標等，用以引導及協助船舶之安全航行。
- (5)信號台設施：船舶交通管理系統(VTS)、海氣象設施及 DSB 通信設備等，用以管制船舶航行與進出港。
- (6)港勤船渠：供港勤船舶靠泊、加油及加水等使用。
- (7)港務港勤大樓：提供政府單位、港區作業單位、港口公司及信號台辦公或作業所需。
- (8)機工場及滑道：供港勤船舶維修、檢驗及保養所需。

### (二)碼頭設施

營運中 20 座專用碼頭分別由台塑石化公司及麥寮汽電公司自行投資興建及維護管理，而公用碼頭將配合未來需求，由港口公司投資興建及經營管理。

## 三、設備概況

### (一)港勤船舶

由港口公司購置拖船 11 艘、交通船 1 艘及什用船 2 艘，用以協助船舶進出港口及靠泊碼頭所需。

### (二)裝卸設備

各碼頭依裝卸需求由裝卸作業單位購置裝卸機具，諸如卸料臂、卸煤機、貨櫃起重機、貨櫃吊運機及空櫃堆高機等，以提供裝卸服務。

## 第二篇 提要分析

### 一、營運實績

#### (一) 進出港船舶

(1) 進港船舶：100年1月至12月進港船舶合計2,491艘次，5,111萬2,185總噸位，較99年減少378艘次，減少率為13.18%，總噸位則減少599萬3,196總噸位，減少率為10.49%，若與90年比較，則增加1,120艘次及增加2,919萬1,482總噸位，增加率分別為81.69%與133.17%。

(2) 出港船舶：100年1月至12月出港船舶合計2,483艘次，5,104萬986總噸位，較99年減少392艘次，減少率為13.63%，總噸位則減少612萬4,614總噸位，減少率為10.71%，若與90年比較，則增加1,109艘次及增加2,907萬7,820總噸位，增加率分別為80.71%與132.39%。

(二) 貨物吞吐量：100年全年進港貨物為4,286萬2,538公噸、出港貨物為1,748萬2,610公噸，吞吐量為6,034萬5,148公噸，較上年減少755萬9,033公噸，減少率為11.13%。若與90年比較，則增加3,402萬5,102公噸，增加率為129.27%

(三) 貨物裝卸量：100年1月至12月全港裝卸量合計為6,037萬5,984公噸，較上年減少771萬3,735公噸，減少率為11.33%。若與90年比較，則增加3,433萬4,556公噸，增加率為131.85%；另100年區內貨主以台塑石化公司4,671萬4,988公噸為最多，占77.37%，其次為麥寮汽電公司487萬6,760公噸，占8.08%，再次為台塑公司378

萬 6,476 公噸，占 6.27%。

(四)謹刊列臺灣地區各港口 100 年營運量比較表（如表 1），以供參考。

## 二、港務統計資料

100 年度進出港船舶及貨物，依各類統計條件說明如次：

### (一)船舶

- (1)進港船舶國籍：以巴拿馬 521 艘次為最多，其次為香港 446 艘次，再次為賴比瑞亞 228 艘次。
- (2)進港船舶種類：以油輪 797 艘次為最多，其次為化學輪 788 艘次，再次為液化輪 290 艘次。與 99 年進港船舶比較，增減率分別為-15.3%、-0.88%及-22.67%。
- (3)進港輪船航次：以國內而言，來自於高雄港 50 艘次為最多。以國外而言，則以香港 459 艘次為最多，其次為南韓 277 艘次，再次為沙烏地阿拉伯 108 艘次。
- (4)出港輪船航次：以國內而言，前往高雄 60 艘次為最多。以國外而言，則以新加坡 335 艘次為最多，其次為香港 322 艘次，再次為南韓 230 艘次。
- (5)進港船舶噸級：進港船舶每艘平均 2 萬 519 總噸，較上年度增加 615 總噸，其中有 718 艘次船舶總噸介於 1,000~4,999 總噸為最多，其次船舶總噸介於 5,000~9,999 總噸為 628 艘次，再次船舶總噸介於 20,000~39,999 總噸為 364 艘次。
- (6)在港停泊時間：出港船舶每艘平均停泊 37.25 小時，較上年度增加 5.43 小時，其中有 1,155 艘次以船舶停泊 24 小時以內為最多，其次為 25~48 小時者 853 艘次，再次為 49~72 小時者 270 艘次。

### (二)貨物

- (1)船舶承運量：國輪承運 70 萬 5,975 公噸，占全部 1.17%，較上年度減少 15 萬 3,896 公噸，負成長 17.9%。外輪承運 5,963 萬



9,173 公噸，占全部 98.83%，較上年度減少 740 萬 5,137 公噸，負成長 11.05%。

(2) 貨物來源地：以沙烏地阿拉伯 857 萬 6,460 公噸為最多，占 20.01%，其次為澳洲 692 萬 413 公噸，占 16.15%，再次為科威特 631 萬 330 公噸，占 14.72%。

(3) 貨物運達地：以中國大陸 451 萬 6,875 噸為最多，占 25.84%，其次為新加坡 279 萬 2,847 公噸，占 15.98%，再次為菲律賓 183 萬 3,483 公噸，占 10.49%。

(4) 進港貨物類別：以非金屬礦物製品 2,637 萬 1,188 公噸為最多，占 61.53%，其次為礦產品 1,492 萬 2,999 公噸，占 34.82%，再次為化學品 147 萬 673 公噸，占 3.43%。

(5) 出港貨物類別：以非金屬礦物製品 1,118 萬 607 公噸為最多，占 63.95%，其次為化學品 602 萬 8,893 公噸，占 34.49%，再次為礦產品 15 萬 4,150 公噸，占 0.88%。

(6) 進港貨物卸貨碼頭：以西三碼頭 1,321 萬 1,035 公噸為最多，占 30.82%，其次為西二碼頭 900 萬 5,440 公噸，占 21.01%，再次為東四碼頭 649 萬 2,162 公噸，占 15.15%。

(7) 出港貨物裝貨碼頭：以東七碼頭 308 萬 3,741 公噸為最多，占 17.64%，其次為東八碼頭 261 萬 8,317 公噸，占 14.98%，再次為西二碼頭 221 萬 3,056 噸，占 12.66%。

### 三、棧埠統計資料

100 年度棧埠裝卸情形，依各類統計條件說明如次：

(1) 貨主：以台塑石化公司 4,671 萬 4,988 公噸為最多，占 77.37%，其次

為麥寮汽電公司 487 萬 6,760 公噸，占 8.08%。

(2)裝卸貨物：裝貨部份以管道貨 1,625 萬 5,605 公噸為最多，占裝貨量 92.86%。卸貨部份以管道貨 2,796 萬 4,963 公噸為最多，占 65.23%，其次為燃煤 1,271 萬 1,049 公噸，占 29.65%。

(3)裝卸效率：平均每小時裝貨量 321 公噸，較上年度增加 0.31%。平均每小時卸貨量 682 公噸，較上年度增加 1.19%。

(4)貨櫃：裝卸貨櫃個數折合 20 呎共 4 萬 1,337 TEU，較上年度減少 3 萬 272 TEU，負成長 42.27%。其中進口貨櫃 2 萬 659 TEU，較上年度減少 1 萬 4,189 TEU，負成長 40.72%；出口貨櫃 2 萬 678 TEU，較上年度減少 1 萬 6,083 TEU，負成長 43.75%。

#### 四、航政統計資料

100 年麥寮港海事案件計 8 件，其中碰撞 4 件，其他 4 件，較上年增加 3 件。

#### 五、財務統計資料

港口公司及裝卸單位 100 年營業收入總計 36.67 億元，較上年減少 4.35 億元，負成長 10.6%。營業支出 25.48 億元，較上年增加 0.35 億元，成長 1.39%。

#### 六、組織及人事統計資料

(1)管理小組：執行具有公權力之港務行政管理及協調航政、海關、港警、檢疫及安檢等其他相關公務機關，合計 7 人（含主任），與上年度相同。

(2)港口公司：負責麥寮港之經營與管理，設有管理組、航管組、港安組及工程組，由航管組、港安組及工程組負責現地港務業務，合計 41 人，與上年度相同。

(3)港灣作業機構：麥寮港之拖船操作業務係由港口公司委託台塑海運公

司執行，另引水人接送、帶解纜、船舶垃圾清理及港區海面垃圾清理等業務由外包廠商負責辦理，合計 113 人，較上年度增加 6 人。

(4) 棧埠作業機構：由區內興辦工業人委託台塑石化公司碼槽處執行專用碼頭之裝卸作業，另攔油索帶解、加油及加水等作業由外包廠商負責辦理，合計 439 人，較上年度增加 34 人。

### 七、港埠設施統計資料

(1) 港棧設施：20 座專用碼頭及 2 處貨櫃堆置場。

(2) 船舶：拖船 11 艘、交通船 4 艘及什用船 4 艘等 19 艘港勤船舶，較上年度增加 2 艘。

(3) 機具：貨櫃起重機、貨櫃吊運機、空櫃堆高機、起重機及堆高機等 23 台機具，與上年度相同。

(4) 車輛：拖車、拖板車及工程車等 57 輛，較上年度減少 1 輛。

表 1 100 年度台灣地區各港口營運量比較

港口別	進港船舶				吞吐量		貨物裝卸量	
	艘次	%	總噸位	%	公噸	%	計費噸	%
總計	36,973	100	695,522,504	100	299,927,402	100	711,306,620	100
麥寮港	2,491	6.74	51,112,185	7.35	60,345,148	20.12	60,375,984	8.49
和平港	366	0.99	7,046,373	1.01	10,276,645	3.43	10,275,729	1.44
高雄港	17,869	48.33	408,495,073	58.73	123,931,900	41.32	437,641,572	61.53
基隆港	6,900	18.66	101,716,159	14.62	23,368,051	7.79	75,419,263	10.60
台中港	6,989	18.90	106,382,863	15.30	62,669,382	20.89	107,709,565	15.14
花蓮港	1,379	3.73	12,522,221	1.80	12,938,686	4.31	13,286,432	1.87
蘇澳港	573	1.55	5,750,950	0.83	5,308,219	1.77	5,482,418	0.77
安平港	406	1.10	2,496,680	0.36	1,089,371	0.36	1,115,657	0.16

商港資料來源：高雄港統計年報

## Chapter I. Basic Overview

### 1. Basic Harbor Information

In response to basic domestic development, to co-op with the land necessity of the Six Naphtha Cracking Complex Project and its expansion, and to domestically provide existing and future necessities for the construction and relocation of petrochemical business. The Ministry of Economic Affairs has planned to develop the Yunlin offshore Primary Industry Zone by dredging sea sand for landfill to create offshore lands. The lands created include Mailiao, Hsin Hsing, Tai His, and Ssu Hu; Mailiao area is the petrochemical zone under the Sixth Naphtha Cracking Complex Project which was proceeded by the Conglomerates of Formosa Plastic by dredging sea sand for landfill. The special purpose wharves inside the industrial harbor of Mailiao (hereinafter referred to as Mailiao Harbor) were all constructed to cooperate with the Sixth Naphtha Cracking Complex Project. In the future, to go with the construction progress, there will be ten public wharves to be constructed to support for businesses in those zones.

Mailiao Harbor was the first domestic private enterprise constructed, operated and managed harbor. The harbor operation is run by the Mailiao Harbor Administration Corporation (hereinafter referred to as Mailiao Harbor Corporation) established by Formosa Plastics Groups. The Industrial Development Bureau of the Ministry of Economic Affairs constructed the management groups for Mailiao exclusive industrial harbor (hereinafter referred to as Administration groups) on Oct. 1, 2000, and used the most streamlined manpower to supervise and implement harbor administrative management, and coordinate the navigation & shipping supervision, customs, harbor police, quarantine, security inspection and

other relevant government authorities. After an inspection approval was carried out by the Ministry of Transportation and Communications, the Ministry of Finance, the Ministry of the Interior, the Ministry of National Defense, the Department of Coast Guard, the Department of Environment Protection, the Committee of Agriculture Affairs and the Government of Yunlin County on Feb. 22, 2001; it started its official operation on Mar. 1, 2001.

Mai Liao Harbor is located at longitude 120°08.9' E, latitude 23°46.9'. It is bordered to the north by Chuoshui Stream and to the south by Hsinhuwei Stream. The harbor lies 40 nautical miles south of Taichung and 80 nautical miles north of Kaohsiung. The harbor direction faces west with an inclination of 34 degrees to the south. The shipping channel is 24 meters deep at mean tide and can accommodate 300,000 DWT class VLCC, making it Taiwan's deepest harbor.

## 2. Harbor and Wharf

### A. Harbor Facilities

- (1) Breakwater: The west breakwater is 3,243 meters long, and the south breakwater is 2,227 meters long.
- (2) Turning basin: 900 meters in diameter.
- (3) Outer waters: The outer waters are divided into a Pilot Station, outer navigation channel and anchorage.
- (4) Aids to navigation: Include ranges, breakwater lighthouses and navigational channel buoys to assist in guiding ships into and out of the harbor.
- (5) Signal station: Include VTS (vessel traffic services), climate & sea conditions facilities and DSB communication equipment.

- (6) Harbor craft basin: For the wharfing and servicing (oil and water) of harbor craft.
- (7) Harbor administration building: Provides government agencies, harbor operating unit, Mailiao Harbor Corporation and signal station or operational demands.
- (8) Ship & machinery repair works and slipway: For repair, inspection and maintenance of harbor craft.

## B. Wharf Facilities

The 20 operating appropriate berths respectively are constructed, operated and managed by Formosa Petrochemical Corporation and Mailiao Power Corporation, and the public berths will be constructed, operated and managed by Mailiao Harbor Corporation in accordance with future demand.

## 3. Equipment Overview

### A. Harbor Vessels

Mailiao Harbor Corporation has purchased 11 tug boats, 1 shuttle boat and 2 miscellaneous boats to assist the incoming/outgoing vessels and docking requirements.

### B. Loading/Unloading Equipment

According to the loading/unloading demands, various wharfs' loading/unloading operation unit will purchase the loading/unloading equipment, such as unloading arm, coal unloader, container cranes, container lifting machine, and empty container forklift to provide the loading/unloading services.

## Chapter II. Summary Analysis

### 1. Operation Performance

#### A. Incoming/Outgoing Vessels

(1) Incoming Vessels: A total of 2,491 vessels called at Mailiao Harbor in 2011 and amounted to a gross tonnage of 51,112,185. The numbers of vessels had a decrease of 378 (13.18%), and the gross tonnage decreased 5,993,196 GT (10.49%), compared to the previous year. Compared to 2001, the number of the vessels had an increase of 1,120 (81.69%) and the gross tonnage increased 29,191,482 GT (133.17%).

(2) Outgoing Vessels: A total of 2,483 vessels called at Mailiao Harbor in 2011 and amounted to a gross tonnage of 51,040,986. The number of vessels had a decrease of 392 (13.63%), and the gross tonnage decreased 6,124,614 GT (10.71%), compared to that of the previous year. Compared to 2001, the number of vessels had an increase of 1,109 (80.71%) and the gross tonnage increased 29,077,820 GT (132.39%).

B. Cargo throughput: At Mailiao Harbor, the imports reached 42,862,538 MT in 2011, and the exports reached 17,482,610 MT. The amount of cargo throughput reached 60,345,148 MT, 7,559,033 MT (11.13%) less than that of the previous year. It had an increase of 34,025,102 MT (129.27%) over 2001.

C. Loading and Unloading: In 2011 the amount of loading and unloading reached 60,375,984 revenue tons, 7,713,735 MT (11.33%) less than that of

the previous year. Compared to 2001, the amount of loading and unloading had an increase of 34,334,556 MT (131.85%). In addition, Formosa Petrochemical Corporation was the biggest owner of cargo in 2011, 46,714,988 MT (77.37%), followed by Mailiao Power Corporation's 4,876,760 MT (8.08%), and Formosa Plastics Corporation's 3,786,476 MT (6.27%).

D. The business volume comparison table of Taiwan harbors in 2011 is listed for reference (See Table 1).

## 2. Harbor Statistical Information

The 2011 incoming/outgoing vessels and cargo are described in accordance with the various statistical conditions as follows:

### A. Vessels

- (1) Incoming Vessels by Nationality: Most incoming vessels came from Panama, 521, followed by Hong Kong, 446 and Liberia, 228.
- (2) Incoming Vessels by Kind: There are 797 tankers, followed by 788 chemical tankers, and 290 liquid chemical tankers. In comparison with the incoming vessels by kind in 2010, the ratios respectively are -15.3%, -0.88% and -22.67%.
- (3) Incoming Vessels by Line of Navigation: Domestically, there are 50 ships from Kaohsiung Harbor. Internationally, there are 459 ships from Hong Kong, followed by 277 ships from South Korea and 108 ships from Saudi Arabia.
- (4) Outgoing Vessels by Line of Navigation: Domestically, there are 60 ships going to Kaohsiung. Internationally, there are 335 ships going to Singapore, followed by 322 ships going to Hong



Kong and 280 ships going to South Korea.

- (5) Incoming Vessels by Gross Tonnage: On average, each incoming vessel has 20,519 GT, compared to 2010, the gross tonnage had an increase of 615, of which there are 718 vessels between 1,000 GT~4,999 GT, 628 vessels between 5,000 GT~9,999 GT, and 364 vessels between 20,000 GT~39,999 GT.
- (6) Time of Vessels Mooring in port: The average number of mooring hours of the outbound vessels is 37.25 which is 5.43 hours more than in 2010, of which there are 1,155 vessels mooring in 24 hours, followed by 853 vessels mooring for 25~48 hours, and 270 vessels mooring for 49~72 hours.

## B. Cargo

- (1) Vessels Carried Volume: The domestic vessel carried volume is 705,975 tons (1.17%) and 153,896 tons less than in 2010; it has a negative growth of 17.9%. The foreign vessels cargo volume is 59,639,173 tons (98.83%), and 7,405,137 tons less than in 2010; it has a negative growth of 11.05%.
- (2) Cargo Origin: Most cargo originates from Saudi Arabia. It has 8,576,460 MT (20.01%), followed by Australia's 6,920,413 MT (16.15%), and Kuwait's 6,310,330 MT (14.72%).
- (3) Cargo Destination: Most cargo is destined for Mainland China with 4,516,875 MT (25.84%), followed by Singapore's 2,792,847 MT (15.98%), and Philippine's 1,833,483 MT (10.49%).
- (4) Classification of Imports: The non-metallic mineral products are the most, 26,371,188 MT (61.53%), followed by 14,922,999 MT of

mineral products (34.82%), and 1,470,673 MT of chemical products (3.43%).

(5) Classification of Exports: The non-metallic mineral products are the most, 11,180,607 MT (63.95%), followed by 6,028,893 MT of chemical products (34.49%), and 154,150 MT of mineral products (0.88%).

(6) Unloading Berths of Imports: Berth West-3 has the most unloading of imports, 13,211,035 MT (30.82%), followed by Berth West-2, which has 9,005,440 MT (21.01%), and Berth East-4, which has 6,492,162 MT (15.15%).

(7) Loading Berths of Exports: Berth East-7 has the most loading of exports, 3,083,741 MT (17.64%), followed by Berth East-8, which has 2,618,317 MT (14.98%), and Berth West-2, which has 2,213,056 MT (12.66%).

### C. Stevedoring & Warehousing Statistical Information

The 2011 Stevedoring & Warehousing situations are described in accordance with the various statistical conditions as follows:

(1) Owner of Cargo: Formosa Petrochemical Corporation is 46,714,988 MT (77.37%) of the most, followed by Mailiao Power Corporation's 4,876,760 MT (8.08%).

(2) Cargo Handling: For cargo loading, the most is pipe line cargo, 16,255,605 MT (92.86%). For cargo unloading, the most is pipe line cargo, 27,964,963 MT (65.23%), followed by 12,711,049 MT of coal (29.65%).

(3) Cargo Handling Efficiency: The average loading volume is 321 MT per hour, which is 0.31% more than 2010. The average unloading volume is 682 MT per hour, which is 1.19% more than 2010.

(4) Container: Loading/unloading container amount is 41,337 TEU, which is 30,272 TEU less than in 2010, a negative growth of 42.27%, of which, the import container is 20,659 TEU, which is 14,189 TEU less than in 2010, a negative growth of 40.72%; the export container is 20,678 TEU, which is 16,083 TEU less than in 2010, a negative growth of 43.75%.

#### 4. Navigation & Shipping Supervision Statistical Information

8 marine accidents were found in Mailiao Harbor in 2011, of which there were four collisions and four others; there are three accidents more than in 2010.

#### 5. Financial Statistical Information

The 2011 total operation revenue of Mailiao Harbor Corporation and the loading/unloading units was 3.667 billion, which is 0.435 billion less than in 2010; a negative growth of 10.6%. The operation expenses were 2.548 billion, which is 0.035 billion more than in 2010; a growth of 1.39%.

#### 6. Organization and Personnel Statistical Information

(1) Administration Groups: implement harbor administrative management, and coordinate the navigation & shipping supervision, customs, harbor police, quarantine, security inspection and other relevant government authorities. There is a total of 7 people (including the chief), the same as the previous year .

(2) Mailiao Harbor Corporation: responsible for the operation and

management of Mailiao Harbor; there is a administration section, a port control section, a port security section and an engineering section set up. The on-site harbor affairs are run by the port control section, port security section and engineering section, which has a total of 41 people, the same as the previous year.

(3) Harbor Operators: trailer operation of Mailiao Harbor is implemented by Formosa Plastics Marine Corporation, commissioned by Mailiao Harbor Corporation, and the coast guard pick up, line handling, vessels trash cleaning and harbor sea surface trash cleaning, etc. affairs handled by the outsourced suppliers. It has a total of 113 people, 6 people more than in 2010.

(4) Berths Operators: district industrial personnel commissioned Formosa Petrochemical Corporation implement appropriate wharf loading/unloading operations. The oil boom unmooring, oil and water servicing operations are handled by the outsourced suppliers; it has a total of 439 people, 34 people more than in 2010.

## 7. Harbor Facilities Statistical Information

(1) Harbor Facilities: 20 specialized wharves and 2 container piling sites.

(2) Vessels: 19 harbor vessels, including: 11 tug boats, 4 shuttle boats and 4 miscellaneous boats, 2 boats more than in 2010.

(3) Machines and Instruments: 23 machines and instruments, including: container cranes, container lifting machines, empty container liftfork, cranes and fork lift trucks, the same as the previous year.

(4) Vehicles: 57 trailers and engineering vehicles, 1 vehicle less than in 2010.

Table 1: The business volume comparison table of Taiwan harbors in 2011

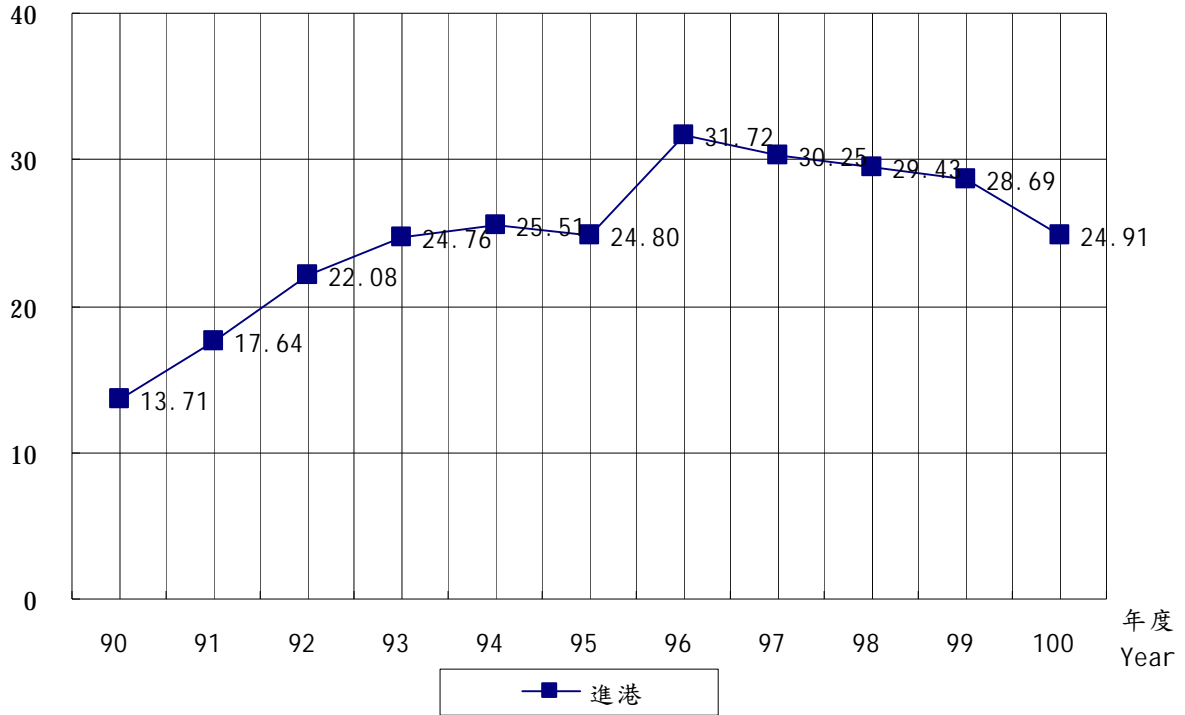
Harbor	Incoming Vessels				Cargo throughput		Cargo Tonnage Handled	
	Vessels	%	Gross Tonnage	%	Tons	%	Revenue Tons	%
Total	36,973	100	695,522,504	100	299,927,402	100	711,306,620	100
Mailiao	2,491	6.74	51,112,185	7.35	60,345,148	20.12	60,375,984	8.49
Heping	366	0.99	7,046,373	1.01	10,276,645	3.43	10,275,729	1.44
Kaohsiung	17,869	48.33	408,495,073	58.73	123,931,900	41.32	437,641,572	61.53
Keelung	6,900	18.66	101,716,159	14.62	23,368,051	7.79	75,419,263	10.60
Taichung	6,989	18.90	106,382,863	15.30	62,669,382	20.89	107,709,565	15.14
Hualien	1,379	3.73	12,522,221	1.80	12,938,686	4.31	13,286,432	1.87
Suao	573	1.55	5,750,950	0.83	5,308,219	1.77	5,482,418	0.77
Anping	406	1.10	2,496,680	0.36	1,089,371	0.36	1,115,657	0.16

Port Information Source: Annual Statistical Report of Kaohsiung Port

### 進港船舶艘次

### Number of Incoming Vessels

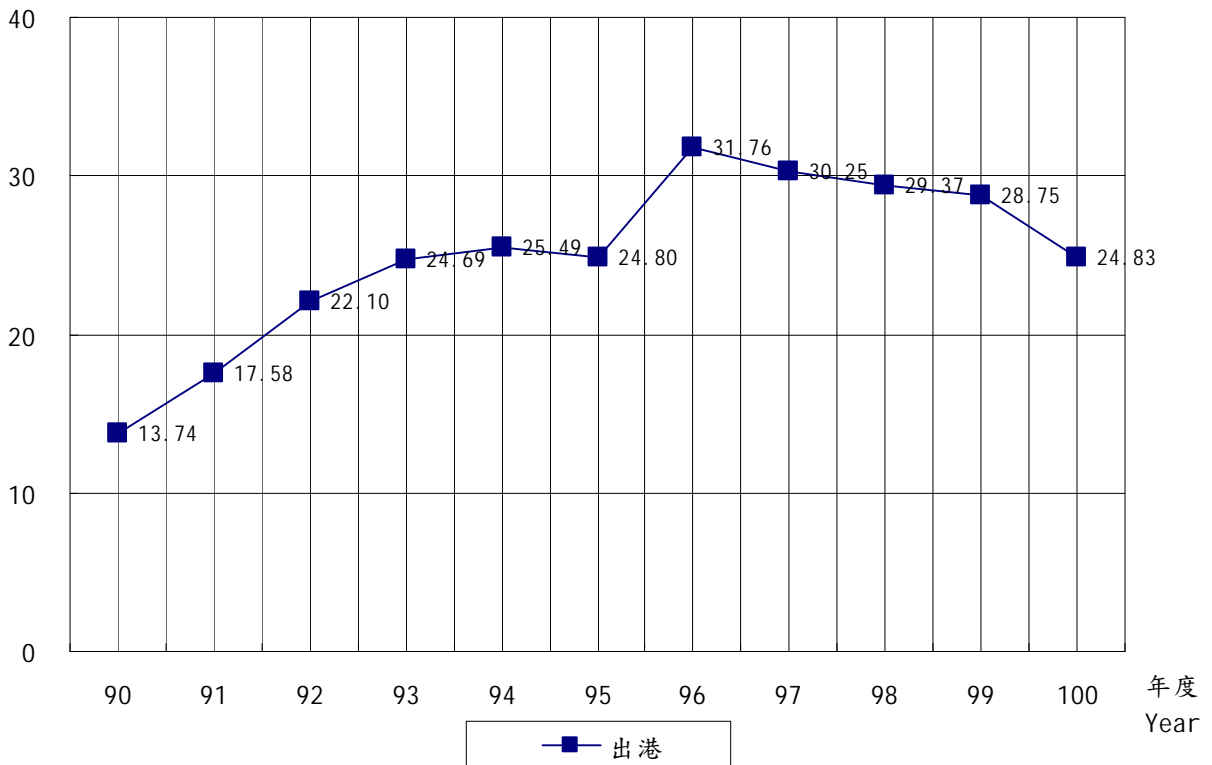
百艘次  
(100 Vessels)



### 出港船舶艘次

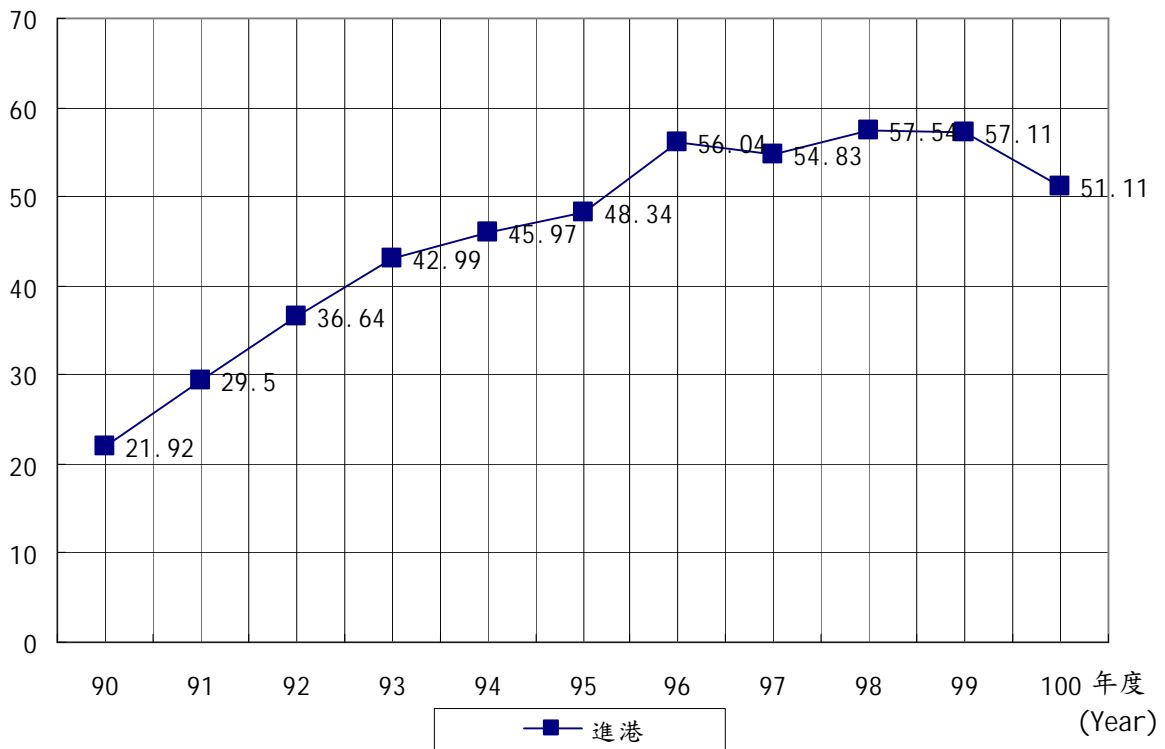
### Number of Outgoing Vessels

百艘次  
(100 Vessels)



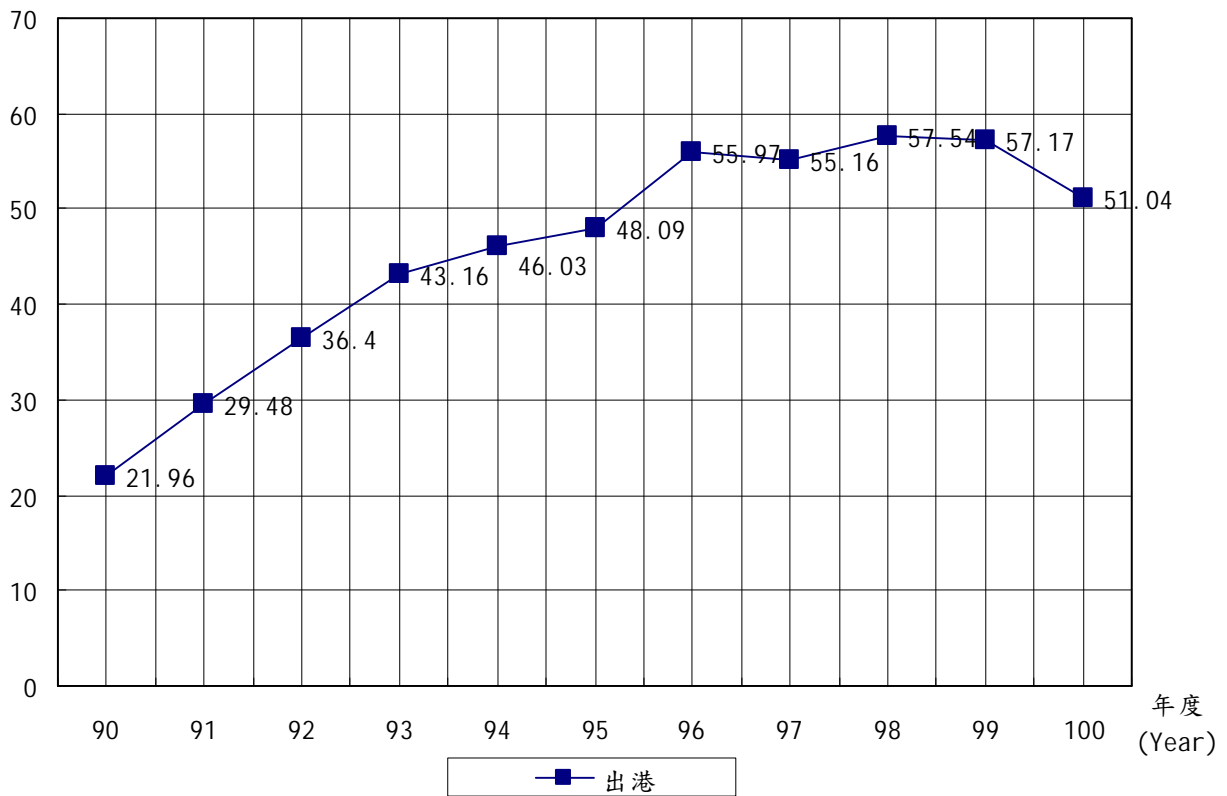
百萬總噸  
(Million GTs)

### 進港船舶總噸位 Gross Tonnage of Incoming Vessels



百萬總噸  
(Million GTs)

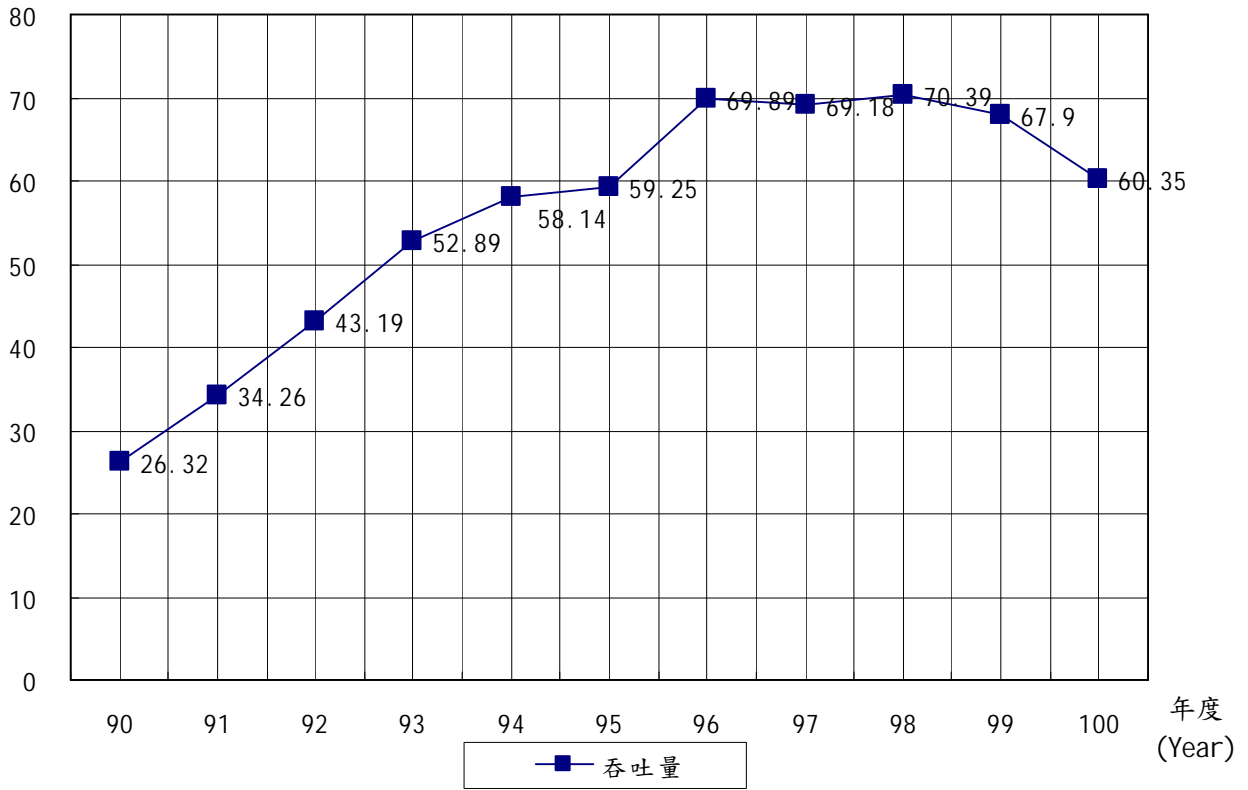
### 出港船舶總噸位 Gross Tonnage of Outgoing Vessels



### 貨物吞吐量

百萬公噸  
(Million MT)

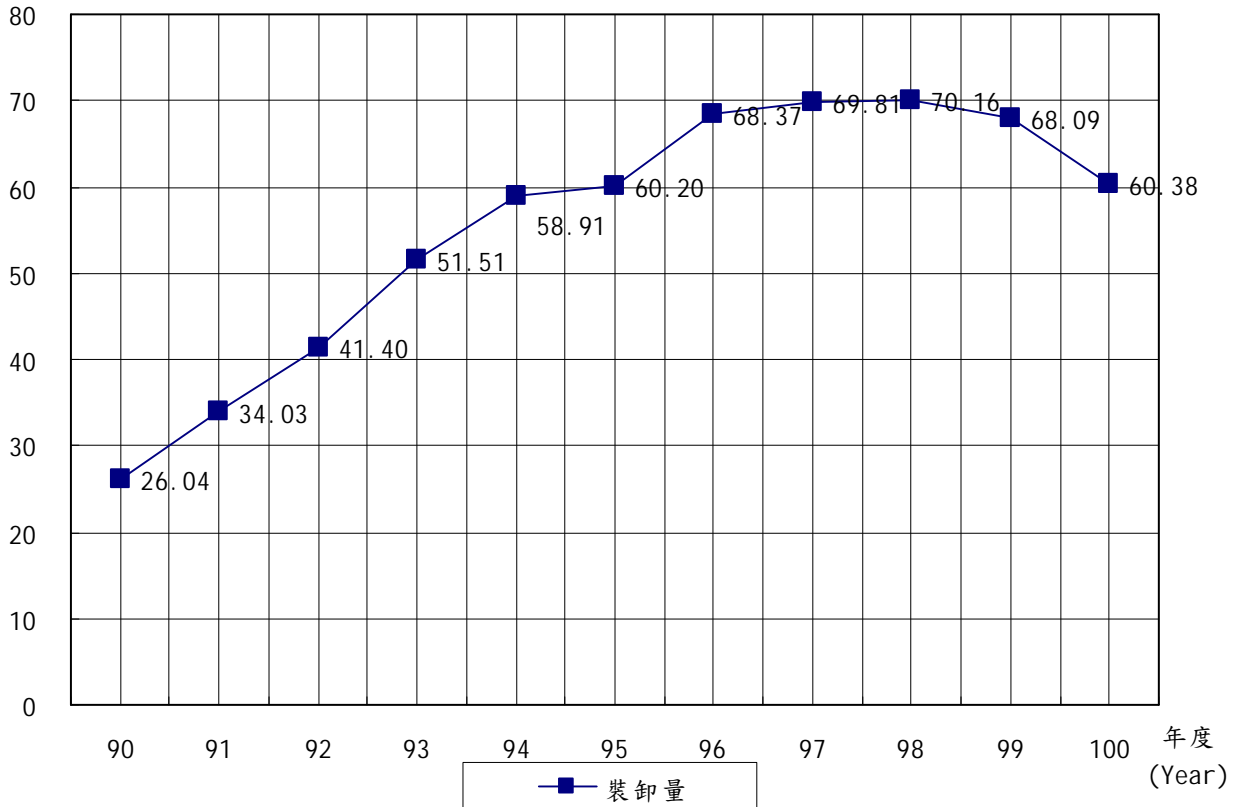
### Amount of Cargoes Throughput



百萬公噸  
(Million MT)

### 貨物裝卸量

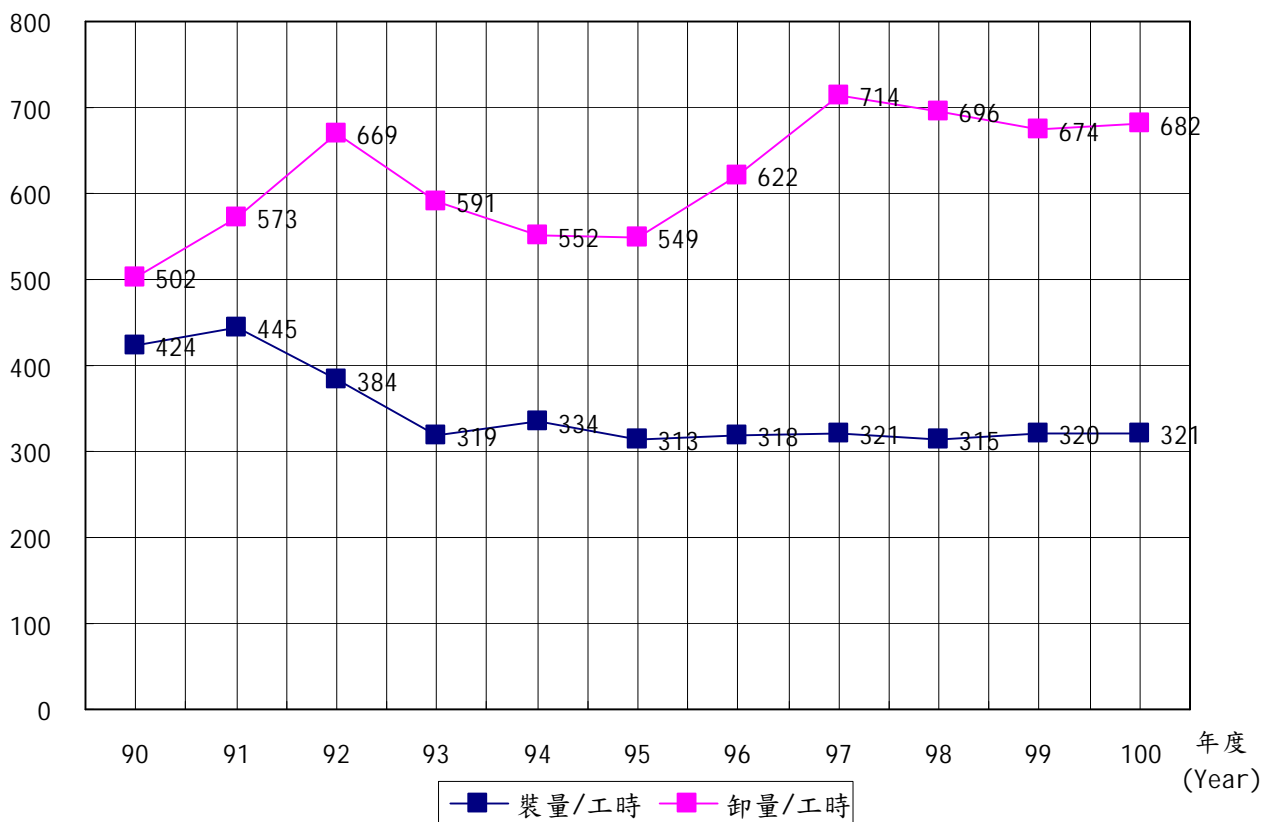
### Volume of Cargoes Handled





量/時  
(V/H)

### 貨物裝卸效率 Efficiency of Cargoes Handled



### 第三篇 統計要覽

#### 一、港務

#### 附表一 進出港輪船運輸量

艘次單位：次  
總噸位單位：噸

年 (月) 別 Year and Month	進 港					
	總 計		國 內		國 外	
	Total		Domestic		Foreign	
	艘 次	總 噸 位	艘 次	總 噸 位	艘 次	總 噸 位
	V.	G. T.	V.	G. T.	V.	G. T.
2001	1,371	21,920,703	119	1,042,767	1,252	20,877,936
2002	1,764	29,501,874	201	1,980,906	1,563	27,520,968
2003	2,208	36,644,322	317	2,499,394	1,891	34,144,928
2004	2,476	42,992,935	473	2,439,657	2,003	40,553,278
2005	2,551	45,970,534	432	2,775,256	2,119	43,195,278
2006	2,480	48,335,727	244	2,537,218	2,236	45,798,509
2007	3,172	56,044,562	198	2,211,301	2,974	53,833,261
2008	3,025	54,825,457	99	1,089,860	2,926	53,735,597
2009	2,943	57,535,569	109	859,869	2,834	56,675,700
2010	2,869	57,105,381	138	1,280,329	2,731	55,825,052
2011	2,491	51,112,185	122	1,134,164	2,369	49,978,021
一 月(Jan.)	225	5,124,345	9	139,204	216	4,985,141
二 月(Feb.)	221	4,752,813	7	96,234	214	4,656,579
三 月(Mar.)	278	4,816,095	9	91,549	269	4,724,546
四 月(Apr.)	265	4,988,125	13	110,728	252	4,877,397
五 月(May)	217	4,279,352	10	88,668	207	4,190,684
六 月(June)	195	4,574,698	12	127,320	183	4,447,378
七 月(July)	190	4,244,577	11	69,653	179	4,174,924
八 月(Aug.)	153	2,458,551	11	97,364	142	2,361,187
九 月(Sep.)	168	3,803,294	6	49,069	162	3,754,225
十 月(Oct.)	191	4,158,727	11	104,762	180	4,053,965
十一月(Nov.)	192	3,927,713	9	71,817	183	3,855,896
十二月(Dec.)	196	3,983,895	14	87,796	182	3,896,099

資料來源：麥寮工業區專用港管理股份有限公司。



### 3rd Statistics Tables

#### 一、Harbor Management

Table 1. Tonnage of Imports and Exports carried by Incoming and Outgoing Vessels

Unit : V. , Ton					
出 港					
Outgoing					
總 計		國 內		國 外	
Total		Domestic		Foreign	
艘 次	總 噸 位	艘 次	總 噸 位	艘 次	總 噸 位
V.	G. T.	V.	G. T.	V.	G. T.
1,374	21,963,166	1,035	16,364,343	339	5,598,823
1,758	29,480,038	1,576	26,416,968	182	3,063,070
2,210	36,397,967	569	6,905,358	1,641	29,492,609
2,469	43,162,045	903	11,998,188	1,566	31,163,857
2,549	46,033,186	488	6,159,527	2,061	39,873,659
2,480	48,094,049	234	2,318,874	2,246	45,775,175
3,176	55,968,701	206	2,707,465	2,970	53,261,236
3,025	55,161,194	103	1,647,650	2,922	53,513,544
2,937	57,542,817	122	1,028,836	2,815	56,513,981
2,875	57,165,600	136	1,351,187	2,739	55,814,413
2,483	51,040,986	115	1,242,957	2,368	49,798,029
217	4,675,839	8	122,345	209	4,553,494
220	4,644,229	6	94,425	214	4,549,804
278	5,055,257	7	71,288	271	4,983,969
270	5,104,969	15	123,673	255	4,981,296
215	4,314,777	9	98,477	206	4,216,300
199	4,598,862	13	149,366	186	4,449,496
190	4,338,664	12	97,462	178	4,241,202
153	2,350,306	11	97,364	142	2,252,942
164	3,518,987	7	51,548	157	3,467,439
193	4,509,175	8	147,770	185	4,361,405
192	3,709,177	8	59,009	184	3,650,168
192	4,220,744	11	130,230	181	4,090,514



## 附表二 進 港 輪 船 國 籍

總噸位單位：噸

年 (月) 別 Year and Month	總 計 Total		巴 拿 馬 Panama		中 華 民 國 R.O.C		香 港 Hong Kong	
	艘次 No. of Vessels	總噸位 G. T.	艘次 No. of Vessels	總噸位 G. T.	艘次 No. of Vessels	總噸位 G. T.	艘次 No. of Vessels	總噸位 G. T.
	2001	1,371	21,920,703	555	9,399,523	109	1,040,744	106
2002	1,764	29,501,874	640	11,731,225	162	1,841,138	50	1,314,824
2003	2,208	36,644,322	763	12,058,096	298	2,687,272	117	1,703,546
2004	2,476	42,992,935	702	9,784,951	463	2,745,771	154	1,768,672
2005	2,551	45,970,534	703	10,159,490	414	2,727,265	212	3,070,868
2006	2,480	48,335,727	722	11,870,852	223	2,169,971	200	3,079,916
2007	3,172	56,044,562	1,001	15,276,041	160	1,845,671	201	5,313,733
2008	3,025	54,825,457	935	15,104,336	97	1,102,133	243	7,237,228
2009	2,943	57,535,569	754	12,941,788	109	967,852	376	9,006,375
2010	2,869	57,105,381	642	11,587,768	148	1,430,540	579	9,624,392
2011	2,491	51,112,185	521	9,279,356	133	1,281,149	446	6,307,484
一 月(Jan.)	225	5,124,345	46	919,134	10	167,807	45	636,830
二 月(Feb.)	221	4,752,813	35	611,178	12	140,433	45	728,815
三 月(Mar.)	278	4,816,095	59	858,221	10	96,922	50	771,431
四 月(Apr.)	265	4,988,125	67	1,246,779	13	109,199	41	580,287
五 月(May)	217	4,279,352	45	726,393	13	104,787	40	623,795
六 月(June)	195	4,574,698	45	818,981	16	182,929	30	379,827
七 月(July)	190	4,244,577	43	690,207	12	85,140	41	365,003
八 月(Aug.)	153	2,458,551	38	634,075	11	97,364	28	382,385
九 月(Sep.)	168	3,803,294	33	566,923	6	49,069	32	670,976
十 月(Oct.)	191	4,158,727	42	807,846	8	87,196	31	376,373
十一月(Nov.)	192	3,927,713	36	559,363	7	57,168	28	394,344
十二月(Dec.)	196	3,983,895	32	840,256	15	103,135	35	397,418

資料來源：麥寮工業區專用港管理股份有限公司



**Table 2. Number of Incoming Vessels by Registered Nationality**

Unit : Vessel;Ton							
新加坡 Singapore		南 韓 Rep. Of Korea		賴比瑞亞 Liberia		其 他 Others	
艘次	總噸位	艘次	總噸位	艘次	總噸位	艘次	總噸位
No. of Vessels	G. T.	No. of Vessels	G. T.	No. of Vessels	G. T.	No. of Vessels	G. T.
80	1,364,884	155	540,676	113	2,153,091	253	6,301,355
132	2,156,932	258	805,547	121	2,207,414	401	9,444,794
127	2,916,450	252	958,336	118	3,255,363	533	13,065,259
192	4,529,051	185	871,648	229	9,538,582	551	13,754,260
321	7,109,280	246	1,176,695	221	10,340,691	434	11,386,245
250	4,477,255	280	1,416,734	329	12,625,913	476	12,695,086
314	4,739,115	509	2,217,131	359	10,699,151	628	15,953,720
290	5,223,831	473	2,380,343	292	8,553,342	695	15,224,244
272	5,275,676	333	1,340,747	294	10,798,873	805	17,204,258
253	5,319,623	292	1,862,746	222	10,631,574	733	16,648,738
217	5,113,297	196	1,251,014	228	11,831,554	750	16,048,331
19	346,321	17	134,451	26	1,164,188	62	1,755,614
20	827,879	17	64,067	22	936,163	70	1,444,278
31	634,834	29	220,446	23	900,126	76	1,334,115
25	663,847	28	225,530	19	955,315	72	1,207,168
13	173,672	17	139,927	16	896,088	73	1,614,690
22	647,890	12	97,050	14	838,093	56	1,609,928
12	231,169	9	87,655	17	1,208,582	56	1,576,821
10	268,703	10	49,160	12	436,714	44	590,150
15	342,590	11	44,657	18	992,710	53	1,136,369
16	254,893	14	60,489	15	946,782	65	1,625,148
11	257,218	24	90,879	20	1,347,359	66	1,221,382
23	464,281	8	36,703	26	1,209,434	57	932,668





附表三 進 港 輪 船 種 類

單位：艘次

年 (月) 別	總計	油輪	液化輪	貨櫃輪	化學輪
Year and Month	Total	Tankers	Liquid Chemical Tankers	Containers	Chemical Tankers
2001	1,371	298	12	135	702
2002	1,764	490	4	213	818
2003	2,208	1,054	506	223	208
2004	2,476	1,358	597	217	35
2005	2,551	1,433	602	193	18
2006	2,480	1,501	399	246	14
2007	3,172	1,857	683	222	53
2008	3,025	1,348	869	183	80
2009	2,943	1,003	393	238	631
2010	2,869	941	375	253	795
2011	2,491	797	290	197	788
一 月(Jan.)	225	77	28	20	63
二 月(Feb.)	221	76	22	18	69
三 月(Mar.)	278	81	41	22	89
四 月(Apr.)	265	88	45	18	69
五 月(May)	217	77	21	14	68
六 月(June)	195	73	17	17	55
七月(July)	190	64	12	17	67
八月(Aug.)	153	36	19	14	57
九月(Sep.)	168	46	16	16	59
十月(Oct.)	191	62	25	12	57
十一月(Nov.)	192	60	18	13	67
十二月(Dec.)	196	57	26	16	68

資料來源：麥寮工業區專用港管理股份有限公司



**Table 3. Number of Incoming Vessels by Kind**

Unit : Vessel			
一般貨輪	散裝輪	煤炭輪	其 他
Ordinary Cargoes	Cargos in Bulk	COAL	Others
55	50	102	17
47	55	69	68
99	47	29	42
97	55	58	59
119	80	64	42
134	99	47	40
134	143	38	42
121	163	26	235
448	166	8	56
283	161	3	58
219	145	8	47
17	18	1	1
20	11		5
29	10	1	5
20	14	2	9
21	11	1	4
14	15	-	4
15	10	-	5
15	8	1	3
16	13	1	1
20	13	-	2
19	12	1	2
13	10	-	6



附表四 進 港 輪 船 航 次

單位：航次

年 (月) 別 Year and Month	國內						
	總計 Total	小計 Sub Total	高雄 Kaohsiung	台中 Taichung	台北 Taipei	基隆 Keelung	其他 Others
2001	1,371	119	29	15	21	41	13
2002	1,764	201	45	34	64	17	41
2003	2,208	317	64	11	125	20	97
2004	2,476	473	106	18	75	26	248
2005	2,551	432	64	6	61	19	282
2006	2,480	244	42	5	81	18	98
2007	3,172	198	59	4	78	12	45
2008	3,025	99	36	1	34	8	20
2009	2,943	109	48	2	2	6	51
2010	2,869	138	65	4	7	28	34
2011	2,491	122	50	3	9	9	51
一 月(Jan.)	225	9	4	1	-	1	3
二 月(Feb.)	221	7	4	-	-	2	1
三 月(Mar.)	278	9	2	-	-	2	5
四 月(Apr.)	265	13	9	-	-	1	3
五 月(May)	217	10	1	1	-	1	7
六 月(June)	195	12	7	-	-	1	4
七月(July)	190	11	4	-	-	1	6
八月(Aug.)	153	11	5	-	1	-	5
九月(Sep.)	168	6	2	-	-	-	4
十月(Oct.)	191	11	2	1	2	-	6
十一月(Nov.)	192	9	2	-	4	-	3
十二月(Dec.)	196	14	8	-	2	-	4

資料來源：麥寮工業區專用港管理股份有限公司



Table 4. Number of Incoming Vessels by Line of Navigation

Unit : Voyage Jnit : Voyage

國 外									
Foreign									
小計	香港	日本	南韓	菲律賓	澳洲	沙烏地阿 拉伯	越南	印尼	其他
Sub Total	Hong kong	Japain	Korea	Philippine	Australia	Saudiarabi a	Vietnam	Indonesia	Others
1,252	179	655	229	26	27	30	7	13	86
1,563	400	551	304	24	31	31	20	9	193
1,891	738	281	372	86	46	52	25	17	274
2,003	669	268	426	140	88	86	20	25	281
2,119	583	371	470	76	83	87	45	34	370
2,236	589	399	445	87	93	120	57	61	385
2,974	856	551	688	117	111	128	77	52	394
2,926	951	482	604	111	114	180	94	43	347
2,834	723	279	451	115	123	128	82	56	877
2,731	591	140	371	119	122	152	50	43	1,143
2,369	459	102	277	130	97	108	47	39	1,110
216	38	11	28	13	10	12	6	3	95
214	49	5	21	9	8	16	4	3	99
269	61	12	35	16	8	8	-	3	126
252	42	17	30	18	11	10	4	5	115
207	36	10	27	9	9	9	6	3	98
183	38	7	20	10	8	9	11	3	77
179	34	4	28	11	7	5	1	3	86
142	24	9	16	5	6	2	-	2	78
162	34	6	17	6	10	9	2	3	75
180	28	7	15	11	6	12	6	4	91
183	38	10	23	10	8	7	4	3	80
182	37	4	17	12	6	9	3	4	90





## 附表五 出 港 輪 船 航 次

單位：航次

年 (月) 別	國 內						
	Domestic						
Year and Month	總計	小計	高雄	台北	台中	基隆	其他
	Total	Sub Total	Kaohsiung	Taipei	Taichung	Keelung	Others
2001	1,374	1,035	3	3	11	21	997
2002	1,758	1,576	8	11	33	6	1,518
2003	2,210	569	79	96	4	1	389
2004	2,469	903	111	67	6	5	714
2005	2,549	488	69	67	5	2	345
2006	2,480	234	98	39	7	-	90
2007	3,176	206	91	67	2	5	41
2008	3,025	103	84	2	2	1	14
2009	2,937	122	79	3	3	8	29
2010	2,875	136	72	1	2	26	35
2011	2,483	115	60	-	2	1	52
一 月(Jan.)	217	8	5	-	-	-	3
二 月(Feb.)	220	6	2	-	-	-	4
三 月(Mar.)	278	7	4	-	-	-	3
四 月(Apr.)	270	15	11	-	-	-	4
五 月(May)	215	9	5	-	1	-	3
六 月(June)	199	13	8	-	1	-	4
七月(July)	190	12	6	-	-	-	6
八月(Aug.)	153	11	5	-	-	-	6
九月(Sep.)	164	7	1	-	-	1	5
十月(Oct.)	193	8	2	-	-	-	6
十一月(Nov.)	192	8	4	-	-	-	4
十二月(Dec.)	192	11	7	-	-	-	4

資料來源：麥寮工業區專用港管理股份有限公司



**Table 5. Number of Outgoing Vessels by Line of Navigation**

Unit : Voyage

小計	國 外									其他
	日本	香港	南韓	新加坡	澳洲	菲律賓	越南	馬來西亞	沙烏地阿拉伯	
Sub Total	Japain	Hong kong	Korea	Singapore	Australia	Philippine	Vietnam	Malaysia	Saudi arabia	Others
339	186	52	59	16	4	2	2	-	2	16
182	16	89	31	15	-	6	5	3	7	10
1,641	108	726	296	65	49	101	26	26	63	181
1,566	226	509	279	63	74	121	25	47	80	142
2,061	318	693	338	160	81	97	53	23	67	231
2,246	306	801	364	193	78	87	74	25	81	237
2,970	430	1,067	546	219	83	114	76	46	102	287
2,922	398	1,146	401	247	79	117	75	23	148	288
2,815	265	769	333	251	95	155	90	20	121	716
2,739	207	487	320	280	115	125	72	27	137	969
2,368	158	322	230	335	96	157	75	27	96	872
209	17	35	23	36	7	13	7	4	9	58
214	12	28	21	29	6	13	6	1	11	87
271	24	37	29	35	6	18	5	3	9	105
255	20	29	31	38	10	19	7	2	8	91
206	16	28	13	32	8	14	5	3	6	81
186	15	24	21	23	9	11	11	1	8	63
178	5	25	12	30	8	11	6	2	8	71
142	14	24	14	15	9	3	1	2	2	58
157	3	21	17	24	10	10	4	2	7	59
185	7	23	20	25	8	14	8	3	13	64
184	11	23	15	25	8	13	8	1	8	72
181	14	25	14	23	7	18	7	3	7	63



附表六 進港輪船噸級與在港停泊時間

停泊時間 Mooring's Time	單位：艘次；噸				
	合計Total 艘次 No. of Vessels	輪 船 Classification of			
		未滿1000噸 Under1,000G.T.	1,000-4,999噸 1,000-4,999G.T.	5,000-9,999噸 5,000-9,999G.T.	10,000-19,999噸 10,000-19,999G.T.
24小時以內 Under 24hours	1,155	57	465	312	193
25-48小時 25-48hours	853	1	216	218	87
49-72小時 49-72hours	270	2	25	78	56
73-96小時 73-96hours	95	2	8	17	20
97-120小時 97-120hours	46			3	4
121-144小時 121-144hours	13				
145-168小時 145-168hours	13				
169-192小時 169-192hours	13		1		
193小時以上 over193hours	25		2		
年 (月) 別 Year and Month					
2001	1,371	69	628	196	174
2002	1,764	129	677	318	288
2003	2,208	243	870	284	352
2004	2,476	298	913	267	404
2005	2,551	238	939	364	393
2006	2,480	139	881	328	408
2007	3,172	82	1,368	576	334
2008	3,025	92	1,285	528	297
2009	2,943	72	1,079	619	331
2010	2,869	79	883	740	353
2011	2,491	66	718	628	361
一月(Jan.)	225	2	61	51	36
二月(Feb.)	221	2	63	55	37
三月(Mar.)	278	4	88	78	45
四月(Apr.)	265	6	88	65	34
五月(May)	217	7	59	65	22
六月(June)	195	7	49	43	28
七月(July)	190	8	49	49	27
八月(Aug.)	153	7	47	41	23
九月(Sep.)	168	4	53	36	25
十月(Oct.)	191	5	53	50	19
十一月(Nov.)	192	5	60	44	30
十二月(Dec.)	196	9	48	51	35

資料來源：麥寮工業區專用港管理股份有限公司



**Table 6. Number of Incoming Vessels by Gross Tonnage And Time of Vessels Mooring in Port**

Unit : Vessels;Ton

噸 位 分 類 Vessels' Gross Tonnage				平均停泊時間(天) Average Mooring's Time(Day)
20,000-39,999噸 20,000-39,999G.T.	40,000-59,999噸 40,000-59,999G.T.	60,000-99,999噸 60,000-99,999G.T.	滿100,000噸以上 Over100,000G.T.	
95	29	4		0.59
190	81	12	48	1.44
41	31	14	23	2.40
17	7	22	2	3.54
4	5	30		4.47
1	3	9		5.59
3		10		6.50
4	2	6		7.63
6	4	13		19.92
159	75	47	23	1.67
170	63	70	49	1.36
237	71	86	65	1.21
341	87	91	75	1.24
361	80	88	88	1.30
463	94	82	85	1.25
463	139	115	95	1.27
450	183	100	90	1.28
456	186	102	98	1.31
413	186	129	86	1.33
364	161	120	73	1.54
37	20	11	7	1.70
34	14	8	8	2.29
30	18	9	6	1.33
42	10	14	6	1.34
32	19	7	6	1.56
37	10	14	7	1.49
25	17	8	7	1.45
18	9	7	1	1.38
21	11	12	6	1.63
35	12	11	6	1.47
28	8	10	7	1.48
25	13	9	6	1.42





附表七 進出港貨物國輪外輪承運量

單位：公噸

年 (月) 別 Year and Month	總 計 Total			
	國 內 Domestic		國 外 Foreign	
	國輪 Domestic V.	外輪 Foreign V.	國輪 Domestic V.	外輪 Foreign V.
2001	697,005	69,885	102,428	25,450,728
2002	1,204,083	93,651	307,286	32,657,186
2003	2,406,163	3,626	665,865	40,111,760
2004	2,692,184	97,637	402,932	49,695,779
2005	2,681,181	2,695	198,222	55,259,819
2006	2,436,106	1,771	52,560	56,764,224
2007	1,880,616	65,620	7,771	67,939,596
2008	602,519	-	231,435	68,346,541
2009	479,961	46,009	167,193	69,698,054
2010	743,974	61,375	115,897	66,982,935
2011	618,654	151,808	87,321	59,487,365
一 月(Jan.)	47,899	30,334	8,745	5,952,429
二 月(Feb.)	48,574	30,428	9,413	5,871,345
三 月(Mar.)	40,711	29,861	9,500	5,021,099
四 月(Apr.)	71,287	-	3,000	5,723,996
五 月(May)	46,813	12,393	39,531	5,186,726
六 月(June)	63,680	-	13,729	5,062,158
七月(July)	56,443	-	1,491	5,079,296
八月(Aug.)	57,113	-	-	2,421,718
九月(Sep.)	45,143	-	-	4,575,661
十月(Oct.)	51,768	-	-	5,050,697
十一月(Nov.)	40,088	39,802	-	5,049,859
十二月(Dec.)	49,135	8,990	1,912	4,492,381

資料來源：麥寮工業區專用港管理股份有限公司



**Table 7. Tonnage of Imports & Exports Carried by Domestic and Foreign Vessels**

Unit : M.T.

進		港		出		港	
Import				Export			
國內		國外		國內		國外	
Domestic		Foreign		Domestic		Foreign	
國輪	外輪	國輪	外輪	國輪	外輪	國輪	外輪
Domestic V.	Foreign V.	Domestic V.	Foreign V.	Domestic V.	Foreign V.	Domestic V.	Foreign V.
96,168	-	6,366	22,229,919	600,837	69,885	96,062	3,220,809
45,629	-	65,847	26,302,254	1,158,454	93,651	241,439	6,354,932
50,564	-	430,827	31,583,522	2,355,599	3,626	235,038	8,528,238
112,594	-	184,888	39,008,826	2,579,590	97,637	218,044	10,686,953
131,616	-	69,535	41,164,939	2,549,565	2,695	128,687	14,094,880
66,156	-	-	42,081,790	2,369,950	1,771	52,560	14,682,434
42,350	-	-	49,454,178	1,838,266	65,620	7,771	18,485,418
22,800	-	231,435	47,148,952	579,719	-	-	21,197,589
17,341	-	5,783	48,268,482	462,620	46,009	161,410	21,429,572
11,302	-	4,853	48,075,276	732,672	61,375	111,044	18,907,659
35,872	-	18,087	42,808,579	582,782	151,808	69,234	16,678,786
-	-	-	4,359,551	47,899	30,334	8,745	1,592,878
-	-	-	4,045,903	48,574	30,428	9,413	1,825,442
-	-	-	3,417,161	40,711	29,861	9,500	1,603,938
-	-	-	4,105,217	71,287	-	3,000	1,618,779
-	-	10,947	3,827,168	46,813	12,393	28,584	1,359,558
-	-	7,140	3,816,627	63,680	-	6,589	1,245,531
-	-	-	3,387,151	56,443	-	1,491	1,692,145
12,869	-	-	1,971,880	44,244	-	-	449,838
11,502	-	-	3,729,046	33,641	-	-	846,615
-	-	-	3,502,869	51,768	-	-	1,547,828
11,501	-	-	3,465,050	28,587	39,802	-	1,584,809
-	-	-	3,180,956	49,135	8,990	1,912	1,311,425



## 附表八 進 港 貨 物 （地區別）

單位：公噸

年 (月) 別 Year and Month	國		內			
	總 計	小 計	花 蓮	蘇 澳	高 雄	其 他
	<u>Total</u>	<u>Sub Total</u>	<u>Hualien</u>	<u>Suauo</u>	<u>Kaohsiung</u>	<u>Others</u>
2001						
2002						
2003						
2004	39,039,900	112,594	112,405	-	189	-
2005	38,666,233	131,616	120,005	11,501	110	-
2006	42,147,951	66,156	65,906	-	250	-
2007	49,496,526	42,350	34,301	-	8,049	-
2008	47,403,187	22,800	22,800	-	-	-
2009	48,291,607	17,341	11,301	-	3,131	2,909
2010	48,091,430	11,302	11,302	-	-	-
2011	42,862,537	35,872	23,003	-	-	12,869
一 月(Jan.)	4,359,551	-	-	-	-	-
二 月(Feb.)	4,045,903	-	-	-	-	-
三 月(Mar.)	3,417,160	-	-	-	-	-
四 月(Apr.)	4,105,217	-	-	-	-	-
五 月(May)	3,838,115	-	-	-	-	-
六 月(June)	3,823,766	-	-	-	-	-
七月(July)	3,387,152	-	-	-	-	-
八月(Aug.)	1,984,749	12,869	-	-	-	12,869
九月(Sep.)	3,740,547	11,502	11,502	-	-	-
十月(Oct.)	3,502,870	-	-	-	-	-
十一月(Nov.)	3,476,551	11,501	11,501	-	-	-
十二月(Dec.)	3,180,956	-	-	-	-	-

資料來源：麥寮工業區專用港管理股份有限公司



**Table 8. Tonnage of Imports (by Region)**

Unit : M.T.

小計	外 國									
	沙烏地阿拉伯	澳 洲	科威特	中國大陸	伊 朗	阿 曼	阿拉伯聯合大公國	印 尼	伊 拉 克	其 他
Sub Total	Saudi arabia	Australia	Kuwait	China mainland	Iran	Oman	UAE	Indonesia	Iraq	Others
38,927,306	9,937,993	6,518,872	5,728,593	5,835,742	2,488,635	1,110,456	989,078	967,087	-	5,350,850
38,534,617	9,397,847	8,053,348	5,926,999	4,617,709	2,802,544	1,523,488	1,215,440	980,115	-	4,017,127
42,081,795	10,359,513	7,743,850	5,972,172	3,303,790	2,237,423	1,105,770	1,678,004	3,193,661	1,742,009	4,745,603
49,454,176	10,636,547	10,396,485	6,551,422	3,864,632	3,229,756	1,395,340	1,634,974	2,938,904	3,167,892	5,638,224
47,380,387	11,330,939	10,831,613	6,901,099	2,823,131	3,059,499	1,361,613	2,107,495	2,128,152	2,799,784	4,037,062
48,274,266	11,299,622	9,224,412	6,537,528	995,885	839,101	2,443,997	1,741,698	2,786,044	4,414,702	7,991,277
48,080,128	10,512,341	8,363,512	6,437,002	680,054	944,870	1,678,995	1,938,966	1,736,894	2,913,919	12,873,575
42,826,665	8,576,460	6,920,413	6,310,330	418,094	899,983	496,051	1,902,473	1,849,274	559,750	14,893,837
4,359,551	946,689	858,575	557,790	52,594	151,301	2,900	207,475	125,245	-	1,456,982
4,045,903	679,835	648,307	526,497	29,189	122,250	136,844	158,729	108,287	268,612	1,367,353
3,417,160	604,106	336,325	552,608	36,710	55,213	5,043	104,680	91,845	-	1,630,630
4,105,217	660,374	546,678	485,872	38,474	111,244	25,519	165,617	118,501	-	1,952,938
3,838,115	1,087,878	407,589	556,568	47,913	33,400	13,980	93,411	366,443	-	1,230,933
3,823,766	576,101	491,750	550,432	48,860	173,004	142,680	130,143	198,412	291,138	1,221,246
3,387,152	1,244,119	545,941	473,501	33,972	21,658	9,500	207,936	109,387	-	741,138
1,971,880	75,336	773,464	310,959	37,441	48,505	-	80,048	122,599	-	523,528
3,729,045	367,952	778,836	588,125	42,778	121,223	15,631	240,263	149,925	-	1,424,312
3,502,870	802,398	503,097	319,076	22,997	27,850	143,954	159,174	235,137	-	1,289,187
3,465,050	951,085	619,870	815,814	22,853	24,335	-	211,105	151,392	-	668,596
3,180,956	580,587	409,981	573,088	4,313	10,000	-	143,892	72,101	-	1,386,994





附表九 出 港 貨 物 (地區別)

單位：公噸

年 (月) 別 Year and Month	國 內						
	總 計	Domestic					
		小 計	高 雄	台 北	蘇 澳	金 門	其 他
	<u>Total</u>	<u>Sub Total</u>	<u>Kaohsiung</u>	<u>Taipei</u>	<u>Suauo</u>	<u>Kin Men</u>	<u>Others</u>
2001							
2002							
2003							
2004	12,732,276	2,677,226	1,042,225	865,093	245,620	36,889	487,399
2005	16,238,493	2,544,987	1,745,019	552,503	117,365	44,994	85,106
2006	17,106,717	2,371,720	982,727	950,429	293,658	41,516	103,390
2007	20,397,075	1,903,888	191,066	1,371,077	207,043	11,106	123,596
2008	21,777,308	579,718	135,272	119,925	198,945	-	125,576
2009	22,099,608	508,627	138,788	13,531	178,803	-	177,505
2010	19,812,748	794,046	94,355	27,158	442,835	8,343	221,355
2011	17,482,609	734,589	118,674	16,099	435,112	-	164,704
一 月(Jan.)	1,679,856	78,233	15,470	-	30,762	-	32,001
二 月(Feb.)	1,913,857	79,001	10,360	-	36,170	-	32,471
三 月(Mar.)	1,684,009	70,572	10,609	-	30,102	-	29,861
四 月(Apr.)	1,693,067	71,287	12,510	-	57,262	-	1,515
五 月(May)	1,447,348	59,206	10,205	12,393	36,608	-	-
六 月(June)	1,315,800	63,680	5,317	-	52,233	-	6,130
七 月(July)	1,750,079	56,443	34,773	-	18,911	-	2,759
八 月(Aug.)	494,084	44,245	-	3,706	37,786	-	2,753
九 月(Sep.)	880,256	33,641	-	-	31,134	-	2,507
十 月(Oct.)	1,599,594	51,768	-	-	46,776	-	4,992
十一月(Nov.)	1,653,198	68,389	9,849	-	20,803	-	37,737
十二月(Dec.)	1,371,461	58,124	9,581	-	36,565	-	11,978

資料來源：麥寮工業區專用港管理股份有限公司



**Table 9. Tonnage of Exports (by Region)**

		Unit : M.T. Unit : M.T.							
		國				外			
		Foreign							
小計	新加坡	中國大陸	菲律賓	美國	澳洲	印尼	香港	越南	其他
Sub Total	Singapore	China mainland	Philippine	United States	Australia	Indonesia	Hong kong	Vietnam	Others
10,055,050	1,607,450	2,321,149	1,545,807	968,526	586,238	60,360	1,166,288	-	1,799,232
13,693,506	2,835,727	2,660,494	1,698,645	1,160,177	831,573	672,875	586,622	-	3,247,393
14,734,997	3,046,986	2,950,357	1,082,112	849,629	1,305,700	642,518	663,592	1,556,389	2,637,714
18,493,187	3,500,386	4,493,062	1,594,111	1,034,871	1,780,948	571,537	677,434	1,911,893	2,928,945
21,197,590	4,033,206	6,639,235	1,173,748	729,939	1,482,649	809,143	348,332	1,979,365	4,001,973
21,590,981	2,586,354	5,645,336	1,884,106	985,313	1,133,237	1,416,779	702,650	1,968,193	5,269,013
19,018,702	2,911,250	5,420,436	1,850,026	677,894	972,573	1,655,019	545,449	1,179,653	3,806,402
16,748,020	2,792,847	4,516,875	1,833,483	451,362	996,955	818,625	882,038	1,250,721	3,205,114
1,601,623	343,460	476,156	156,880	45,999	73,000	61,390	44,153	193,055	207,530
1,834,856	314,716	537,101	197,863	21,173	63,000	223,709	83,604	107,426	286,264
1,613,437	146,614	483,181	304,726	45,425	74,687	69,903	159,693	30,176	299,032
1,621,780	239,773	443,700	178,242	86,960	162,377	57,739	93,259	112,497	247,233
1,388,142	242,329	427,351	71,393	26,490	62,000	148,819	83,497	126,870	199,393
1,252,120	123,664	316,445	177,721	2,000	38,500	14,627	44,921	219,269	314,973
1,693,636	210,700	291,923	120,329	24,025	120,588	122,787	81,192	92,158	629,934
449,839	4,633	267,716	23,009	48,510	73,500	429	2,263	10,005	19,774
846,615	184,179	249,742	47,939	38,848	55,500	30,419	38,145	25,265	176,578
1,547,826	120,225	317,112	226,293	36,911	123,407	42,009	41,560	123,444	516,865
1,584,809	629,891	351,456	117,720	38,933	132,396	1,266	47,086	134,707	131,354
1,313,337	232,663	354,992	211,368	36,088	18,000	45,528	162,665	75,849	176,184



附表十 進 港 貨 物 分 類 (按 月)

單位：公噸

年 (月) 別	礦 產 品						
	總 計	Minerals					
Year and Month		煤	鐵 礦 砂	土、石、砂 礫	硫 磺	粗 鹽	其 他
	Total	Coal & Coke	Iron Ore	Sand & Gravel	Sulphur	Salt	Others
2001	21,862,645	9,550,636	-	-	-	809,479	-
2002	26,112,303	8,312,020	-	-	-	864,124	111,770
2003	30,726,933	9,186,476	-	25,486	-	1,057,068	46,253
2004	39,039,900	12,172,091	-	162,380	-	1,403,019	139,234
2005	38,666,233	11,994,071	-	164,738	-	1,237,660	156,379
2006	42,147,947	12,490,414	-	447,450	-	1,743,925	100,483
2007	49,496,527	15,240,616	-	578,233	-	1,699,685	72,198
2008	47,403,188	13,185,738	-	437,432	-	2,226,171	27,940
2009	48,291,606	13,340,191	-	352,208	-	1,632,852	21,692
2010	48,091,428	13,740,729	-	329,128	-	1,821,464	27,095
2011	42,862,538	12,922,261	-	260,799	-	1,722,395	17,543
一 月(Jan.)	4,359,551	1,421,364	-	45,987	-	139,499	3,751
二 月(Feb.)	4,045,904	868,903	-	23,311	-	145,182	-
三 月(Mar.)	3,417,161	873,282	-	23,504	-	211,678	-
四 月(Apr.)	4,105,216	1,473,253	-	22,963	-	125,400	2,957
五 月(May)	3,838,114	1,220,946	-	23,101	-	-	512
六 月(June)	3,823,768	1,202,487	-	25,875	-	240,956	3,001
七 月(July)	3,387,151	860,572	-	25,915	-	72,600	-
八 月(Aug.)	1,984,749	836,488	-	23,601	-	139,377	3,009
九 月(Sep.)	3,740,548	1,337,233	-	23,545	-	145,213	-
十 月(Oct.)	3,502,869	904,869	-	22,997	-	219,759	-
十一 月(Nov.)	3,476,551	949,301	-	-	-	143,563	-
十二 月(Dec.)	3,180,956	973,563	-	-	-	139,168	4,313

資料來源：麥寮工業區專用港管理股份有限公司



**Table 10. Classification of Imports (by Month)**

Unit : M.T.

非金屬礦物製品 Non-metallic Mineral Products			
汽、柴、燃料油	原油	輕油	其他
Gasoline, Diesel, Fuel Oil	Grude Oil	Naphtha	Others
-	-	-	10,981,472
-	-	-	15,819,147
-	15,442,885	3,445,306	80,629
-	19,786,495	3,441,305	560,565
-	20,439,568	2,469,388	535,310
36,629	22,076,578	3,049,811	604,229
-	23,788,323	5,303,729	602,331
-	23,187,786	6,284,727	458,045
2,909	24,318,216	6,485,165	704,600
-	22,299,715	7,639,160	416,349
66,292	19,454,259	6,140,506	710,131
-	1,881,110	686,520	-
-	2,125,586	766,703	-
-	1,501,987	610,703	68,447
-	1,499,543	773,729	86,124
-	1,656,446	737,587	68,213
-	1,822,397	355,153	64,523
-	1,941,127	378,139	44,758
66,292	362,027	298,987	68,995
-	1,632,196	322,747	109,565
-	1,610,575	526,063	89,268
-	1,910,649	286,487	43,574
-	1,510,616	397,688	66,664





附表十 進 港 貨 物 分 類 (按 月) (續 完)

單位：公噸

年 (月) 別 Year and Month	化 學 品 Chemical Products			基 本 金 屬 Basic Metal	
	肥 料	動 植 物 性 油 脂	其 他	鋼 鐵	廢 鐵
	Fertilizer	Animal & Vegetable Grease	Others	Iron & Steel	Iron & Steel Scrap
2001	-	-	494,438	-	-
2002	-	-	995,195	-	-
2003	-	-	1,442,304	-	-
2004	-	-	1,232,141	-	-
2005	-	-	1,378,237	-	-
2006	-	-	1,586,764	-	-
2007	-	-	2,142,588	-	-
2008	-	-	1,595,062	-	-
2009	-	-	1,416,932	-	-
2010	-	-	1,804,662	-	-
2011	-	-	1,470,673	-	-
一 月(Jan.)	-	-	118,409	-	-
二 月(Feb.)	-	-	111,468	-	-
三 月(Mar.)	-	-	127,560	-	-
四 月(Apr.)	-	-	117,000	-	-
五 月(May)	-	-	129,160	-	-
六 月(June)	-	-	109,376	-	-
七 月(July)	-	-	64,040	-	-
八 月(Aug.)	-	-	185,773	-	-
九 月(Sep.)	-	-	158,547	-	-
十 月(Oct.)	-	-	128,920	-	-
十 一 月(Nov.)	-	-	131,476	-	-
十 二 月(Dec.)	-	-	88,944	-	-

資料來源：麥寮工業區專用港管理股份有限公司



**Table 10. Classification of Imports (by Month)**

Unit : M.T.

基本金屬 Basic Metal		金屬製品 Metal Products			其他什貨
其他	機件	電器機械器材	其他		
Others	Grude Oil	Electrical Machinery, Apparatus	Others		General Merchandise
-	-	-	-		26,620
-	-	-	10,047		-
-	-	-	-		526
-	1,272	-	-		141,398
-	6,965	408	110		283,399
-	11,252	-	58		354
-	614	-	-		68,210
-	-	-	287		-
-	178	-	1,196		15,467
-	1,132	-	431		11,563
-	736	-	418		96,525
-	-	-	-		62,911
-	-	-	-		4,751
-	-	-	-		-
-	536	-	-		3,711
-	-	-	-		2,149
-	-	-	-		-
-	-	-	-		-
-	200	-	-		-
-	-	-	-		11,502
-	-	-	418		-
-	-	-	-		11,501
-	-	-	-		-



附表十一 進 港 貨 物 分 類 (按碼頭)

單位：公噸

年 (月) 別	礦 產 品						
	總 計	Minerals					
Year and Month		煤	鐵 礦 砂	土、石、砂 礫	硫 磺	粗 鹽	其 他
	Total	Coal & Coke	Iron Ore	Sand & Gravel	Sulphur	Salt	Others
2001	21,862,645	9,550,636	-	-	-	809,479	-
2002	26,112,303	8,312,020	-	-	-	864,124	111,770
2003	30,726,933	9,186,476	-	25,486	-	1,057,068	46,253
2004	37,615,228	11,669,042	-	130,652	-	1,267,204	104,405
2005	41,992,805	12,321,245	-	197,997	-	1,317,494	120,406
2006	42,147,947	12,490,414	-	447,450	-	1,743,925	100,483
2007	49,496,527	15,227,086	-	578,233	-	1,699,685	72,198
2008	47,403,186	13,185,738	-	437,432	-	2,226,171	27,942
2009	48,291,606	13,340,191	-	352,208	-	1,632,852	21,692
2010	48,091,429	13,740,729	-	329,128	-	1,821,464	27,096
2011	42,862,538	12,922,261	-	260,799	-	1,722,395	17,543
東1碼頭	5,467	-	-	-	-	-	4,313
東2碼頭	2,382,929	637,531	-	-	-	1,722,395	-
東3碼頭	5,792,568	5,792,568	-	-	-	-	-
東4碼頭	6,492,162	6,492,162	-	-	-	-	-
東5碼頭	279,889	-	-	260,799	-	-	13,230
東6碼頭	6,988	-	-	-	-	-	-
東7碼頭	1,242,393	-	-	-	-	-	-
東8碼頭	2,095,559	-	-	-	-	-	-
東9N/S碼頭	315,411	-	-	-	-	-	-
東10N/S碼頭	201,622	-	-	-	-	-	-
北1碼頭	465,477	-	-	-	-	-	-
北2碼頭	435,592	-	-	-	-	-	-
北5碼頭	29,425	-	-	-	-	-	-
北6碼頭	12,305	-	-	-	-	-	-
北7碼頭	10,703	-	-	-	-	-	-
西1碼頭	877,573	-	-	-	-	-	-
西2碼頭	9,005,440	-	-	-	-	-	-
西3碼頭	13,211,035	-	-	-	-	-	-



**Table 11. Classification of Imports (by Wharf)**

Unit : M.T.

非金屬礦物製品 Non-metalic Mineral Products			
汽、柴、燃料油	原油	輕油	其他
Gasoline, Diesel, Fuel Oil	Grude Oil	Naphtha	Others
-	-	-	10,981,472
-	-	-	15,819,147
-	15,442,885	3,445,306	80,629
-	19,256,748	3,395,226	559,611
-	23,411,864	2,632,987	490,109
36,629	22,076,578	3,049,811	604,229
-	23,647,080	5,227,816	602,331
-	23,187,783	6,284,726	458,045
2,909	24,318,216	6,485,164	704,600
-	22,299,714	7,639,159	416,349
66,291	19,454,260	6,140,507	710,130
-	-	-	-
-	-	-	-
-	-	-	-
-	-	-	-
-	-	-	-
-	-	-	-
-	-	831,194	411,199
39,707	280,591	1,415,518	298,931
-	-	-	-
-	-	-	-
-	-	-	-
-	-	-	-
-	-	-	-
-	-	-	-
26,584	-	850,989	-
-	9,005,440	-	-
-	10,168,229	3,042,806	-





附表十一 進 港 貨 物 分 類 (按碼頭) (續完)

單位：公噸

年 (月) 別 Year and Month	化 學 品 Chemical Products			基 本 金 屬 Basic Metal	
	肥 料	動 植 物 性 油 脂	其 他	鋼 鐵	廢 鐵
	Fertilizer	Animal & Vegetable Grease	Others	Iron & Steel	Iron & Steel Scrap
2001	-	-	494,438	-	-
2002	-	-	995,195	-	-
2003	-	-	1,442,304	-	-
2004	-	-	1,106,384	-	-
2005	-	-	1,473,730	-	-
2006	-	-	1,586,764	-	-
2007	-	-	2,142,587	-	-
2008	-	-	1,595,062	-	-
2009	-	-	1,416,933	-	-
2010	-	-	1,804,664	-	-
2011	-	-	1,470,673	-	-
東1碼頭	-	-	-	-	-
東2碼頭	-	-	-	-	-
東3碼頭	-	-	-	-	-
東4碼頭	-	-	-	-	-
東5碼頭	-	-	-	-	-
東6碼頭	-	-	6,988	-	-
東7碼頭	-	-	-	-	-
東8碼頭	-	-	-	-	-
東9N/S碼頭	-	-	308,561	-	-
東10N/S碼頭	-	-	201,622	-	-
北1碼頭	-	-	465,477	-	-
北2碼頭	-	-	435,592	-	-
北5碼頭	-	-	29,425	-	-
北6碼頭	-	-	12,305	-	-
北7碼頭	-	-	10,703	-	-
西1碼頭	-	-	-	-	-
西2碼頭	-	-	-	-	-
西3碼頭	-	-	-	-	-







附表十二 出 港 貨 物 分 類 (按 月)

年 (月) 別	礦 產 品			
	總 計	煤	鐵 礦 砂	土、石、砂礫
Year and Month	Total	Coal & Coke	Iron Ore	Clay, Stone, Sand & Gravel
2001	4,179,533	-	-	-
2002	7,918,726	-	-	50
2003	10,670,493	-	-	-
2004	12,732,277	-	-	-
2005	16,238,492	-	-	-
2006	17,106,715	-	-	-
2007	20,397,076	-	-	-
2008	21,777,306	-	-	-
2009	22,099,608	-	-	-
2010	19,812,747	-	-	-
2011	17,482,614	-	-	-
一 月(Jan.)	1,679,855	-	-	-
二 月(Feb.)	1,913,858	-	-	-
三 月(Mar.)	1,684,011	-	-	-
四 月(Apr.)	1,693,067	-	-	-
五 月(May)	1,447,348	-	-	-
六 月(June)	1,315,800	-	-	-
七 月(July)	1,750,080	-	-	-
八 月(Aug.)	494,083	-	-	-
九 月(Sep.)	880,256	-	-	-
十 月(Oct.)	1,599,596	-	-	-
十一月(Nov.)	1,653,198	-	-	-
十二月(Dec.)	1,371,462	-	-	-

資料來源：麥寮工業區專用港管理股份有限公司



**Table 12. Classification of Imports (by Month)**

單位：公噸			Unit : M.T.	
礦 產 品 Minerals			非 金 屬 礦 物 製 品 Non-metalic Mineral Products	
硫 磺 Sulphur	粗 鹽 Salt	其 他 Others	汽、柴、燃料油 Gasoline, Diesel, Fuel Oil	其 他 Others
-	-	-	1,393,605	647,888
65,426	-	-	3,987,163	1,267,453
103,316	-	-	6,785,856	646,945
188,950	-	-	9,192,127	518,246
238,759	-	-	11,584,666	713,673
260,700	-	-	11,773,715	690,876
295,000	-	-	12,649,199	943,722
334,460	-	-	12,890,872	1,171,169
367,100	-	-	13,381,360	1,103,819
272,305	-	-	10,973,773	1,313,684
154,150	-	-	9,802,513	1,378,095
15,000	-	-	955,981	103,245
31,550	-	-	1,087,294	175,809
15,050	-	-	798,910	166,591
-	-	-	860,459	162,991
-	-	-	803,082	136,294
33,000	-	-	830,442	103,675
15,050	-	-	1,216,312	128,815
-	-	-	23,009	18,591
-	-	-	468,642	20,009
16,500	-	-	1,016,466	110,344
28,000	-	-	983,116	146,657
-	-	-	758,800	105,074





附表十二 出 港 貨 物 分 類 (按 月) (續 完)

單位：公噸

年 (月) 別 Year and Month	化 學 品 Chemical Products			基 本 金 屬 Basic Metal	
	肥 料	動 植 物 性 油 脂	其 他	鋼 鐵	廢 鐵
	Fertilizer	Animal & Vegetable Grease	Others	Iron & Steel	Iron & Steel Scrap
2001	-	-	2,128,272	-	-
2002	-	-	2,598,634	-	-
2003	-	-	3,128,210	-	-
2004	-	-	2,809,358	-	-
2005	-	-	3,663,692	-	-
2006	-	2,709	4,329,830	-	-
2007	-	3,226	6,201,806	-	-
2008	-	2,089	7,183,434	-	-
2009	-	155	7,097,754	-	-
2010	-	396	7,158,364	-	-
2011	-	92	6,028,802	-	-
一 月 (Jan.)	-	-	602,272	-	-
二 月 (Feb.)	-	-	586,626	-	-
三 月 (Mar.)	-	-	672,899	-	-
四 月 (Apr.)	-	-	665,125	-	-
五 月 (May)	-	17	486,360	-	-
六 月 (June)	-	35	347,353	-	-
七 月 (July)	-	-	387,098	-	-
八 月 (Aug.)	-	-	449,730	-	-
九 月 (Sep.)	-	-	389,098	-	-
十 月 (Oct.)	-	-	456,286	-	-
十 一 月 (Nov.)	-	-	492,077	-	-
十 二 月 (Dec.)	-	40	493,878	-	-

資料來源：麥寮工業區專用港管理股份有限公司



**Table 12. Classification of Imports (by Month)**

Unit : M.T.

基本金屬 Basic Metal		金屬製品 Metal Products			其他什貨
其他	機件	電器機械器材	其他		
Others	Grude Oil	Electrical Machinery, Apparatus	Others		General Merchandise
9,768	-	-	-	-	-
-	-	-	-	-	-
-	-	-	-	-	6,166
-	5,132	-	-	-	18,464
-	2,591	-	1,820	-	33,291
-	374	-	-	-	48,511
1,002	493	-	-	-	302,629
-	1,613	-	-	-	193,669
-	2,064	-	-	-	147,356
-	196	-	-	-	94,029
-	-	-	-	-	118,962
-	-	-	-	-	3,357
-	-	-	-	-	32,579
-	-	-	-	-	30,561
-	-	-	-	-	4,492
-	-	-	-	-	21,595
-	-	-	-	-	1,295
-	-	-	-	-	2,805
-	-	-	-	-	2,753
-	-	-	-	-	2,507
-	-	-	-	-	-
-	-	-	-	-	3,348
-	-	-	-	-	13,670



附表十三 出 港 貨 物 分 類 (按碼頭)

單位：計費噸

年 (月) 別	礦 產 品						非金屬礦物製品	
	總 計	煤	土、石、砂礫	硫 磺	粗 鹽	其他	汽、柴、燃料油	其他
Year and Month	Total	Coal & Coke	Clay, Stone, Sand & Gravel	Sulphur	Salt	Others	Gasoline, Diesel, Fuel Oil	Others
2001	4,179,533	-	-	-	-	-	1,393,605	647,888
2002	7,918,726	-	50	65,426	-	-	3,987,163	1,267,453
2003	10,670,493	-	-	103,316	-	-	6,785,856	646,945
2004	13,893,900	-	-	172,921	-	-	9,719,518	317,376
2005	16,918,407	-	-	220,731	-	-	12,030,309	504,290
2006	17,106,715	-	-	260,700	-	-	11,773,715	690,876
2007	20,397,078	-	-	295,000	-	-	12,649,200	943,722
2008	21,777,307	-	-	334,460	-	-	12,890,870	1,171,168
2009	22,099,610	-	-	367,100	-	-	13,381,359	1,103,821
2010	19,812,747	-	-	272,305	-	-	10,973,772	1,313,685
2011	17,482,611	-	-	154,150	-	-	9,802,512	1,378,095
東1碼頭	647,410	-	-	154,150	-	-	-	-
東2碼頭	157,279	-	-	-	-	-	-	-
東3碼頭	-	-	-	-	-	-	-	-
東4碼頭	-	-	-	-	-	-	-	-
東5碼頭	547,999	-	-	-	-	-	-	226,889
東6碼頭	2,001,273	-	-	-	-	-	82,618	161,054
東7碼頭	3,083,741	-	-	-	-	-	2,497,249	384,255
東8碼頭	2,618,318	-	-	-	-	-	2,424,062	185,266
東9N/S碼頭	1,772,186	-	-	-	-	-	736,290	203,998
東10N/S碼頭	503,756	-	-	-	-	-	91,027	28,914
北1碼頭	806,394	-	-	-	-	-	-	-
北2碼頭	679,181	-	-	-	-	-	-	8,050
北5碼頭	308,037	-	-	-	-	-	-	169,427
北6碼頭	67,832	-	-	-	-	-	-	10,242
北7碼頭	305,546	-	-	-	-	-	-	-
西1碼頭	1,770,603	-	-	-	-	-	1,758,210	-
西2碼頭	2,213,056	-	-	-	-	-	2,213,056	-
西3碼頭	-	-	-	-	-	-	-	-

資料來源：麥寮工業區專用港管理股份有限公司









## 二、棧埠

### 附表十四 本港裝卸業者營運實績 (依公司別)

單位：計費噸

年 (月) 別	總計	台塑公司	南亞公司	台化公司	台塑石化	麥寮汽電
Year and Month	Total	Formosa Plastics Corp.	Nan Ya Plastics Corp.	Formosa Chemicals & Fiber Corp.	Formosa Petro Chemical Corp.	Mailiao Power Corp.
2001	26,041,428	1,734,837	361,460	846,347	13,299,008	9,570,802
2002	34,030,979	2,148,008	353,687	1,341,265	21,442,904	8,318,320
2003	41,397,426	2,674,789	512,050	1,276,821	31,976,683	4,264,920
2004	51,509,127	2,878,148	951,710	1,165,175	41,212,559	4,595,606
2005	58,911,212	3,300,788	969,961	1,748,139	47,116,736	4,931,050
2006	60,204,848	4,180,307	1,008,421	1,834,079	47,282,406	5,016,540
2007	68,374,622	4,233,728	1,554,613	2,997,363	53,313,822	5,289,865
2008	69,806,005	4,902,732	1,751,868	2,956,767	55,066,752	4,243,481
2009	70,159,727	4,154,754	1,672,748	2,806,740	55,677,975	5,130,831
2010	68,089,719	4,323,088	1,720,225	3,228,921	52,997,135	4,903,530
2011	60,375,984	3,786,476	1,467,225	2,582,020	46,714,988	4,876,760
一月(Jan.)	6,330,108	326,158	164,903	252,939	4,746,539	769,078
二月(Feb.)	5,486,977	459,696	148,278	240,887	4,418,411	131,513
三月(Mar.)	5,361,508	276,122	143,074	228,779	4,137,071	483,095
四月(Apr.)	6,168,912	471,269	174,721	222,705	4,617,770	601,920
五月(May)	5,172,934	165,813	99,791	227,433	4,164,299	440,638
六月(June)	4,728,943	314,958	64,051	190,401	3,524,682	543,658
七月(July)	5,734,041	99,996	51,725	212,874	4,911,813	398,191
八月(Aug.)	2,458,681	419,164	104,421	223,265	1,080,846	544,287
九月(Sep.)	3,961,186	257,799	123,580	197,322	3,145,646	143,529
十月(Oct.)	5,923,705	391,708	95,712	236,338	4,615,466	490,782
十一月(Nov.)	4,723,462	346,372	114,184	175,266	3,691,133	330,069
十二月(Dec.)	4,325,527	257,421	182,785	173,811	3,661,312	-



## 二、Stevedoring&Warehousing

**Table 14. Volume of Cargoes Handled by Stevedoring & Warehousing Companies**

Unit : Revenue Ton								
中塑油品	大連化工	長春樹脂	南中石化	台塑重工	台塑旭纖	台灣醋酸	台塑光電	其他
Simosa Oil Corp Ltd.	Dairen Chemical Corp.	Chang Chun Plastics Corp.	Nan Chung Petrochemical Corp.	Formosa Heavy Industries Corp.	Formosa Asahi Spandex CO. Ltd	Formosa Bp Chemicals Corp.	Formosa Plasma Display Corp.	Others
-	92,461	-	126,745	8,868	-	-	-	900
71,138	194,893	23,675	137,089	-	-	-	-	-
248,154	247,102	24,360	164,305	6,166	-	-	2,076	-
226,464	253,777	32,091	185,023	5,604	2,231	739	-	-
350,600	253,088	37,055	182,361	7,173	5,313	8,948	-	-
146,043	404,607	39,792	132,759	2,430	3,367	154,097	-	-
138,281	443,190	104,759	149,693	1,820	2,829	144,659	-	-
97,368	391,405	73,683	130,357	1,887	2,423	187,282	-	-
91,057	296,743	75,432	74,193	2,060	2,405	174,789	-	-
162,523	378,265	95,141	98,110	196	2,458	180,127	-	-
178,997	282,496	249,082	54,270	3,592	1,087	178,991	-	-
15,191	22,300	20,611	-	903	46	11,440	-	-
26,048	18,440	18,188	11,495	-	112	13,909	-	-
19,364	34,392	17,079	-	590	147	21,795	-	-
22,416	17,225	20,432	3,973	1,852	200	14,429	-	-
9,047	29,926	12,018	14,104	-	39	9,826	-	-
19,933	31,244	21,538	-	247	97	18,134	-	-
12,505	22,585	15,003	2,000	-	103	7,246	-	-
3,007	38,347	20,124	6,957	-	72	18,191	-	-
7,298	26,578	33,271	5,805	-	138	20,220	-	-
20,517	24,879	26,091	-	-	66	22,146	-	-
16,125	8,549	23,205	6,946	-	51	11,562	-	-
7,546	8,031	21,522	2,990	-	16	10,093	-	-



附表十五 裝卸貨物噸量

單位：計費噸

年(月)別 Year and Month	裝卸貨物							
	總計	合計	什貨	管道	貨櫃	散貨	其他散裝	其他
	Total	Total	General Cargoes	Pipe	Containers	Bulk Cargoes	Others Cargoes in Bulk	Others
2001	26,041,428	4,178,784	293,580	3,527,883	357,321	-	-	-
2002	34,030,979	7,918,677	224,834	6,774,926	853,491	65,426	-	-
2003	41,397,426	10,670,493	200,319	9,425,168	941,690	-	103,316	-
2004	51,509,126	13,893,898	78,055	12,605,891	1,037,031	-	172,921	-
2005	58,911,212	16,918,407	135,989	15,627,469	934,218	-	220,731	-
2006	60,204,848	17,501,588	172,710	16,172,854	882,627	-	273,397	-
2007	68,374,622	20,373,429	290,359	18,885,774	924,074	-	273,222	-
2008	69,806,005	21,665,723	406,906	20,187,051	624,626	-	447,140	-
2009	70,159,727	21,639,950	440,360	20,017,457	623,627	-	558,506	-
2010	68,089,719	19,843,095	515,846	18,270,920	589,240	-	467,089	-
2011	60,375,984	17,506,100	515,992	16,255,605	339,266	-	395,237	-
一月(Jan.)	6,330,108	1,758,076	41,903	1,641,020	40,151	-	35,002	-
二月(Feb.)	5,486,977	1,885,599	49,500	1,736,493	47,102	-	52,504	-
三月(Mar.)	5,361,508	1,681,331	49,790	1,545,612	42,687	-	43,242	-
四月(Apr.)	6,168,912	1,636,014	49,652	1,519,430	35,382	-	31,550	-
五月(May)	5,172,934	1,422,121	48,400	1,326,483	19,550	-	27,688	-
六月(June)	4,728,943	1,295,550	40,747	1,188,495	18,868	-	47,440	-
七月(July)	5,734,041	1,725,065	33,500	1,613,182	25,687	-	52,696	-
八月(Aug.)	2,458,681	544,171	46,000	477,370	20,801	-	-	-
九月(Sep.)	3,961,186	1,013,261	44,500	947,793	20,968	-	-	-
十月(Oct.)	5,923,705	1,513,318	55,000	1,409,011	12,307	-	37,000	-
十一月(Nov.)	4,723,462	1,714,273	31,500	1,595,479	19,179	-	68,115	-
十二月(Dec.)	4,325,527	1,317,321	25,500	1,255,237	36,584	-	-	-

資料來源：麥寮工業區專用港管理股份有限公司



**Table 15. Volume of Cargoes Handled**

Unit : Revenue Ton

卸 貨							
Unloading							
合 計	散貨-工鹽	散貨-燃煤	其他散裝	管 道	什 貨	貨 櫃	其 他
Total	Salt	Coal	Other Cargoes in Bulk	Pipe	General Cargoes	Containers	Others
21,862,644	809,479	9,550,634	71,672	11,404,239	26,620	-	-
26,112,302	864,124	8,312,020	111,771	16,789,864	34,523	-	-
30,726,933	1,057,068	9,186,479	71,739	20,383,154	26,417	2,076	-
37,615,228	1,267,204	11,669,042	235,055	24,299,356	144,571	-	-
41,992,805	1,306,192	12,321,246	329,703	27,983,648	52,016	-	-
42,703,260	1,817,708	12,683,935	405,580	27,746,569	49,468	-	-
48,001,193	1,698,714	14,052,202	458,389	31,755,007	36,881	-	-
48,140,282	2,229,605	13,469,664	443,998	31,991,580	5,435	-	-
48,519,777	1,653,261	13,642,516	338,586	32,861,109	24,305	-	-
48,246,624	1,827,364	13,290,129	365,791	32,734,353	28,987	-	-
42,869,884	1,861,659	12,711,049	306,936	27,964,963	25,277	-	-
4,572,032	139,361	1,684,735	45,987	2,698,179	3,770	-	-
3,601,378	284,683	829,832	46,353	2,440,510	-	-	-
3,680,177	72,602	691,065	23,514	2,892,996	-	-	-
4,532,898	264,480	1,646,226	22,985	2,591,344	7,863	-	-
3,750,813	-	1,164,723	23,118	2,560,288	2,684	-	-
3,433,393	240,839	768,891	25,888	2,397,775	-	-	-
4,008,976	-	1,580,712	25,923	2,399,337	3,004	-	-
1,914,510	211,979	683,054	23,606	995,671	200	-	-
2,947,925	145,213	887,710	35,058	1,879,944	-	-	-
4,410,387	219,763	1,569,454	23,003	2,597,749	418	-	-
3,009,189	143,569	941,883	11,501	1,909,214	3,022	-	-
3,008,206	139,170	262,764	-	2,601,956	4,316	-	-





附表十六 裝卸貨物效率

年(月)別 Year and Month	合 計 Total		散 貨-工 鹽 Bulk Cargoes		散 貨-燃 煤 Bulk Cargoes		其 他 散 裝 Other Cargoes in Bulk	
	裝量/工時	卸量/工時	裝量/工時	卸量/工時	裝量/工時	卸量/工時	裝量/工時	卸量/工時
	V./H.	V./H.	V./H.	V./H.	V./H.	V./H.	V./H.	V./H.
2001	424	502	-	745	-	1,165	-	256
2002	445	573	-	839	-	1,463	-	255
2003	384	669	-	835	-	1,705	297	421
2004	319	591	-	800	-	1,698	279	223
2005	334	552	-	694	-	1,491	313	224
2006	313	549	-	705	-	1,511	278	216
2007	318	622	-	758	-	1,666	292	406
2008	321	714	-	757	-	1,849	274	423
2009	315	696	-	757	-	1,837	271	412
2010	320	674	-	762	-	1,770	258	371
2011	321	682	-	759	-	1,781	261	411
一 月(Jan.)	315	663	-	760	-	1,810	266	410
二 月(Feb.)	320	730	-	763	-	1,805	271	405
三 月(Mar.)	314	729	-	755	-	1,812	269	400
四 月(Apr.)	318	657	-	750	-	1,799	259	409
五 月(May)	320	641	-	-	-	1,815	267	403
六 月(June)	316	730	-	761	-	1,783	261	422
七月(July)	316	617	-	-	-	1,698	251	410
八月(Aug.)	332	652	-	755	-	1,710	-	420
九月(Sep.)	338	725	-	760	-	1,750	-	419
十月(Oct.)	318	664	-	758	-	1,801	255	408
十一月(Nov.)	314	660	-	761	-	1,798	251	410
十二月(Dec.)	333	711	-	763	-	1,790	-	-

資料來源：麥寮工業區專用港管理股份有限公司



**Table 16. Efficiency of Cargoes Handled**

管 道		什 貨		貨 櫃		其 他	
Pipe		General Cargoes		Containers		Others	
裝量/工時	卸量/工時	裝量/工時	卸量/工時	裝量/工時	卸量/工時	裝量/工時	卸量/工時
V./H.	V./H.	V./H.	V./H.	V./H.	V./H.	V./H.	V./H.
693	650	155	170	-	26	-	-
734	673	156	178	-	32	-	-
681	639	174	169	-	32	-	-
782	623	171	127	29	38	-	-
784	624	163	145	35	44	-	-
759	625	162	130	37	46	-	-
741	631	186	152	34	43	-	-
735	614	235	190	35	45	-	-
735	616	222	318	33	44	-	-
746	621	214	240	33	44	-	-
754	635	218	322	33	43	-	-
742	619	220	331	33	45	-	-
753	631	221	-	33	45	-	-
735	635	219	-	32	43	-	-
761	621	217	320	34	42	-	-
770	623	209	323	34	43	-	-
749	640	220	-	32	45	-	-
750	615	230	319	33	43	-	-
747	660	219	322	31	45	-	-
761	651	221	-	33	43	-	-
770	642	215	330	32	43	-	-
755	633	217	317	32	43	-	-
758	650	209	311	33	40	-	-



## 附表十七 貨櫃裝卸量

單位：貨櫃：個  
貨物：公噸

年 月 別	總計		進 口			
	Grand Total		合 計 Total		20 呎 20 Ft.	
	櫃 數 No. of Container	TEU	實 櫃 Loaded Container	空 櫃 Empty Container	實 櫃 Loaded Container	空 櫃 Empty Container
2001	17,903	21,440	-	17,903	-	14,366
2002	39,471	47,070	-	39,471	-	31,872
2003	46,649	57,208	396	46,253	1	36,089
2004	48,670	59,576	-	48,670	-	37,764
2005	43,059	54,174	-	43,059	-	31,944
2006	42,729	53,306	-	42,729	-	32,152
2007	46,338	54,336	-	46,338	-	38,340
2008	30,808	36,672	-	30,808	-	24,944
2009	31,749	37,254	-	31,749	-	26,244
2010	29,096	34,848	-	29,096	-	23,344
2011	17,489	20,659	-	17,489	-	14,319
一 月(Jan.)	2,418	3,138	-	2,418	-	1,698
二 月(Feb.)	2,041	2,247	-	2,041	-	1,835
三 月(Mar.)	1,958	2,451	-	1,958	-	1,465
四 月(Apr.)	1,828	2,194	-	1,828	-	1,462
五 月(May)	1,233	1,598	-	1,233	-	868
六 月(June)	1,275	1,425	-	1,275	-	1,125
七月(July)	953	983	-	953	-	923
八月(Aug.)	744	944	-	744	-	544
九月(Sep.)	1,106	1,196	-	1,106	-	1,016
十月(Oct.)	878	1,018	-	878	-	738
十一月(Nov.)	1,494	1,634	-	1,494	-	1,354
十二月(Dec.)	1,561	1,831	-	1,561	-	1,291

資料來源：麥寮工業區專用港管理股份有限公司。



**Table 17. Number of Containers Handled**

						Cargo - M.T.	
Incoming		櫃				貨物噸數	
35 呎 35 Ft.		40 呎 40 Ft.		45 呎 45 Ft.			
實 櫃	空 櫃	實 櫃	空 櫃	實 櫃	空 櫃		
Loaded Container	Empty Container	Loaded Container	Empty Container	Loaded Container	Empty Container	Cargo	Tonnage
-	-	-	3,537	-	-	-	-
-	-	-	7,599	-	-	-	-
-	-	395	10,164	-	-	2,076	-
-	-	-	10,906	-	-	-	-
-	-	-	11,115	-	-	-	-
-	-	-	10,577	-	-	-	-
-	-	-	7,998	-	-	-	-
-	-	-	5,864	-	-	-	-
-	-	-	5,505	-	-	-	-
-	-	-	5,752	-	-	-	-
-	-	-	3,170	-	-	-	-
-	-	-	720	-	-	-	-
-	-	-	206	-	-	-	-
-	-	-	493	-	-	-	-
-	-	-	366	-	-	-	-
-	-	-	365	-	-	-	-
-	-	-	150	-	-	-	-
-	-	-	30	-	-	-	-
-	-	-	200	-	-	-	-
-	-	-	90	-	-	-	-
-	-	-	140	-	-	-	-
-	-	-	140	-	-	-	-
-	-	-	270	-	-	-	-





附表十七 貨櫃裝卸量(續完)

單位：貨櫃：個  
貨物：公噸

年 (月) 別 Year and Month	總計		出 口			
	Grand Total		合 計 Total		20 呎 20 Ft.	
	櫃 數 No. of Container	TEU	實 櫃 Loaded Container	空 櫃 Empty Container	實 櫃 Loaded Container	空 櫃 Empty Container
2001	18,507	22,386	18,507	-	14,628	-
2002	44,282	52,638	44,282	-	35,926	-
2003	50,593	61,480	50,567	26	39,691	15
2004	52,876	64,790	52,803	73	40,934	28
2005	47,059	59,058	47,059	-	35,060	-
2006	45,430	55,804	45,046	384	34,813	243
2007	47,856	56,000	47,771	85	39,682	30
2008	31,908	38,113	31,855	53	25,662	41
2009	31,860	37,800	31,860	-	25,920	-
2010	30,463	36,761	30,463	-	24,165	-
2011	17,297	20,678	17,297	-	13,916	-
一 月(Jan.)	1,972	2,597	1,972	-	1,347	-
二 月(Feb.)	2,449	2,949	2,449	-	1,949	-
三 月(Mar.)	2,197	2,616	2,197	-	1,778	-
四 月(Apr.)	1,772	2,166	1,772	-	1,378	-
五 月(May)	1,011	1,232	1,011	-	790	-
六 月(June)	976	1,126	976	-	826	-
七月(July)	1,364	1,494	1,364	-	1,234	-
八月(Aug.)	1,008	1,153	1,008	-	863	-
九月(Sep.)	1,077	1,216	1,077	-	938	-
十月(Oct.)	612	750	612	-	474	-
十一月(Nov.)	979	1,128	979	-	830	-
十二月(Dec.)	1,880	2,251	1,880	-	1,509	-



**Table 17. Number of Containers Handled**

						Gargo - M.T.	
貨 櫃						貨物噸數	
Outgoing							
35 呎 35 Ft.		40 呎 40 Ft.		45 呎 45 Ft.			
實 櫃	空 櫃	實 櫃	空 櫃	實 櫃	空 櫃		
Loaded Container	Empty Container	Loaded Container	Empty Container	Loaded Container	Empty Container	Cargo	Tonnage
-	-	3,879	-	-	-		357,320
-	-	8,356	-	-	-		853,490
-	-	10,876	11	-	-		941,690
-	-	11,869	45	-	-		1,037,031
-	-	11,999	-	-	-		934,218
-	-	10,233	141	-	-		882,627
-	-	8,089	55	-	-		924,074
-	-	6,193	12	-	-		624,629
-	-	5,940	-	-	-		623,627
-	-	6,298	-	-	-		589,239
-	-	3,381	-	-	-		339,264
-	-	625	-	-	-		40,152
-	-	500	-	-	-		47,101
-	-	419	-	-	-		42,686
-	-	394	-	-	-		35,382
-	-	221	-	-	-		19,550
-	-	150	-	-	-		18,868
-	-	130	-	-	-		25,687
-	-	145	-	-	-		20,801
-	-	139	-	-	-		20,968
-	-	138	-	-	-		12,307
-	-	149	-	-	-		19,178
-	-	371	-	-	-		36,584



## 附表十八 倉儲業務狀況

單位：公噸

年(月)別	期末倉棧總量 (A) Total Volume of Warehouse at the End of Year	本期進倉量 (B) Receiving	本期進倉量 (C) (不包括存放 貨櫃場部份) Receiving (Excluding Volume of Cargoes Stored in Container Vard	本期出倉量 Delivery	期末進倉量 (D) Remaining
Year and Month	(噸) (Ton)	(噸) (Ton)	(噸) (Ton)	(噸) (Ton)	(噸) (Ton)
2001					
2002					
2003					
2004					
2005					
2006					
2007					
2008					
2009					
2010					
2011					
一月(Jan.)					
二月(Feb.)					
三月(Mar.)					
四月(Apr.)					
五月(May)					
六月(June)					
七月(July)					
八月(Aug.)					
九月(Sep.)					
十月(Oct.)					
十一月(Nov.)					
十二月(Dec.)					



**Table 18. Volume of Warehousing**

Unit : M.T.

本期延日存倉量(E) (不包括存放露 置場及貨櫃場部份) Storage (Including Volume of Cargoes Stored in Open Space)  (噸日) (Ton - Day)	本期延日存倉量(F) (不包括存放露 置場及貨櫃場部份) Storage (Excluding Volume of Cargoes Stored in Open Space)  (噸日) (Ton - Day)	倉棧平均使用率 E / (Ax當月天數)	貨物平均存倉日數 E / (前期之D+B) Average Cargo Remaining Days Per Ton  (日) (Day)	貨物裝卸量(不包括 管道、貨櫃裝 卸)(G) Volume of Cargoes Handled(Excludeing Pipe & Container Cargoes)  (噸) (Ton)	貨物進倉比率 C / G Percentage of Cargoes Stored  %
--	--	-------------------------	--	---	---





### 三、航政監理

#### 附表十九 工業專用港區域海事案件

單位：艘數

年(月)別 Year and Month	Vessels of Ship - Wreck										
	合計 Total	碰 撞	觸 礁 或 擱 淺	失 火	爆 炸	洩 漏	傾 覆	機 械 故 障	非 常 變 故	其 他	
2001											
2002											
2003	2	-	-	-	-	-	-	1	-	1	
2004	3	1	-	-	-	1	-	-	1	-	
2005	8	6	-	-	-	-	-	-	-	2	
2006	3	1	-	-	-	-	-	-	-	2	
2007	5	-	1	-	-	-	-	2	-	2	
2008	4	3	-	-	-	-	-	-	-	1	
2009	7	2	1	-	-	1	-	-	-	3	
2010	5	3	-	-	-	-	-	1	-	1	
2011	8	4	-	-	-	1	-	1	2	-	
一 月(Jan.)	1	-	-	-	-	-	-	1	-	-	
二 月(Feb.)	-	-	-	-	-	-	-	-	-	-	
三 月(Mar.)	-	-	-	-	-	-	-	-	-	-	
四 月(Apr.)	1	1	-	-	-	-	-	-	-	-	
五 月(May.)	1	1	-	-	-	-	-	-	-	-	
六 月(June.)	-	-	-	-	-	-	-	-	-	-	
七 月(July.)	-	-	-	-	-	-	-	-	-	-	
八 月(Aug.)	1	1	-	-	-	-	-	-	-	-	
九 月(Sep.)	-	-	-	-	-	-	-	-	-	-	
十 月(Oct.)	1	-	-	-	-	-	-	-	1	-	
十一 月(Nov.)	2	-	-	-	-	1	-	-	1	-	
十二 月(Dec.)	1	1	-	-	-	-	-	-	-	-	

資料來源：麥寮工業區專用港管理股份有限公司







四、財務  
附表二十 營 業 總 收 入

單位：新台幣元

年 (月) 別	7=5+6	5=1+2+3+4	1
Year and Month	總 計 Grand Total	營 業 收 入 Operating Revenue	港 灣 設 施 使 用 收 入 Facilities Usage Revenue
2001	1,713,532,506	1,503,529,918	678,921,665
2002	2,114,443,106	1,931,886,166	969,599,978
2003	2,480,584,209	2,417,832,652	1,227,143,023
2004	3,062,894,485	2,988,776,216	1,511,159,274
2005	3,356,493,634	3,285,882,302	1,666,146,703
2006	3,430,154,796	3,382,657,949	1,719,710,703
2007	4,209,976,723	3,993,368,414	1,982,687,717
2008	4,044,733,179	3,958,382,250	2,015,268,804
2009	4,141,160,700	3,954,892,930	2,017,722,074
2010	4,102,496,618	4,018,819,093	1,949,872,975
2011	3,666,667,917	3,570,620,369	1,732,244,013
一 月(Jan.)	367,532,385	363,872,640	180,120,495
二 月(Feb.)	339,143,860	337,213,900	164,240,984
三 月(Mar.)	376,754,925	352,532,772	161,900,584
四 月(Apr.)	344,107,180	341,476,718	167,407,264
五 月(May.)	326,415,895	284,270,911	140,711,858
六 月(June.)	301,910,960	298,797,983	145,319,767
七 月(July.)	291,821,930	285,951,349	159,035,609
八 月(Aug.)	216,617,585	213,210,234	76,465,204
九 月(Sep.)	250,399,499	248,297,654	118,656,446
十 月(Oct.)	303,680,090	300,723,742	162,620,719
十一 月(Nov.)	277,713,918	276,041,722	125,699,246
十二 月(Dec.)	270,569,690	268,230,744	130,065,837

資料來源：麥寮工業區專用港管理股份有限公司

#### 四、Finance

**Table 20. Total Operating Revenue**

Unit : NT \$

2	3	4	6
港灣業務收入 Port Revenue	棧埠業務收入 Stevedoring & Warehousing Revenue	租金收入 Rent Revenue of Operating Assets	營業外收入 Non - Operating Revenue
129,158,163	695,450,090	-	210,002,588
149,644,590	812,641,598	-	182,556,940
163,040,374	1,027,649,255	-	62,751,557
190,961,727	1,286,655,215	-	74,118,269
210,673,015	1,409,062,584	-	70,611,332
224,626,821	1,438,320,425	-	47,496,847
279,545,337	1,731,135,360	-	216,608,309
269,659,269	1,673,454,177	-	86,350,929
271,211,173	1,665,959,683	-	186,267,770
273,834,416	1,795,111,702	-	83,677,525
262,261,469	1,576,114,887	-	96,047,548
28,223,785	155,528,360	-	3,659,745
24,729,761	148,243,155	-	1,929,960
25,237,552	165,394,636	-	24,222,153
25,377,248	148,692,206	-	2,630,462
22,487,681	121,071,372	-	42,144,984
20,956,608	132,521,608	-	3,112,977
22,297,710	104,618,030	-	5,870,581
14,614,443	122,130,587	-	3,407,351
18,231,102	111,410,106	-	2,101,845
22,396,182	115,706,841	-	2,956,348
19,068,676	131,273,800	-	1,672,196
18,640,721	119,524,186	-	2,338,946

## 附表二十一 營 業 總 支 出

單位：新台幣元

年 (月) 別	17=15+16	15=8+9+10+11+12+13+14	8	9	10
Year and Month	總 計 Grand Total	營 業 支 出 Operating Expense	港 灣 費 用 Port Expense	棧 埠 費 用 Stevedoring & Warehousing Expense	維 持 費 用 Command Expense
2001	1,342,041,944	1,007,047,993	-	633,034,287	-
2002	1,513,072,746	1,253,395,970	-	724,907,262	-
2003	1,776,135,585	1,542,378,958	489,572,751	846,578,123	-
2004	2,057,280,740	1,685,344,858	543,550,653	925,211,062	-
2005	1,828,340,397	1,750,994,466	576,109,936	981,350,944	-
2006	2,401,306,693	2,111,193,224	905,062,669	989,089,755	-
2007	2,550,049,377	2,367,194,764	944,246,643	1,106,659,306	-
2008	2,465,699,176	2,267,819,359	732,746,796	1,200,196,316	-
2009	2,423,886,449	2,372,903,738	912,031,004	1,239,716,920	-
2010	2,512,559,966	2,428,173,744	966,475,610	1,248,012,352	-
2011	2,547,996,901	2,481,267,557	996,579,878	1,272,738,738	-
一 月(Jan.)	208,350,405	204,589,868	73,057,282	114,208,725	-
二 月(Feb.)	178,863,421	175,344,603	70,637,607	87,962,749	-
三 月(Mar.)	230,192,024	226,590,607	101,889,378	107,422,602	-
四 月(Apr.)	221,790,262	218,212,150	100,262,953	100,045,242	-
五 月(May.)	211,570,086	207,761,319	91,337,760	98,250,596	-
六 月(June.)	214,280,372	207,702,987	90,244,775	102,311,508	-
七 月(July.)	208,892,972	205,208,216	83,536,752	103,880,610	-
八 月(Aug.)	206,486,442	202,166,381	71,229,926	113,817,379	-
九 月(Sep.)	200,299,909	189,852,210	72,396,178	99,463,076	-
十 月(Oct.)	203,199,877	198,737,101	73,068,557	107,075,305	-
十一月(Nov.)	202,435,626	196,037,767	64,359,199	113,574,506	-
十二月(Dec.)	261,635,505	249,064,348	104,559,511	124,726,440	-

資料來源：麥寮工業區專用港管理股份有限公司



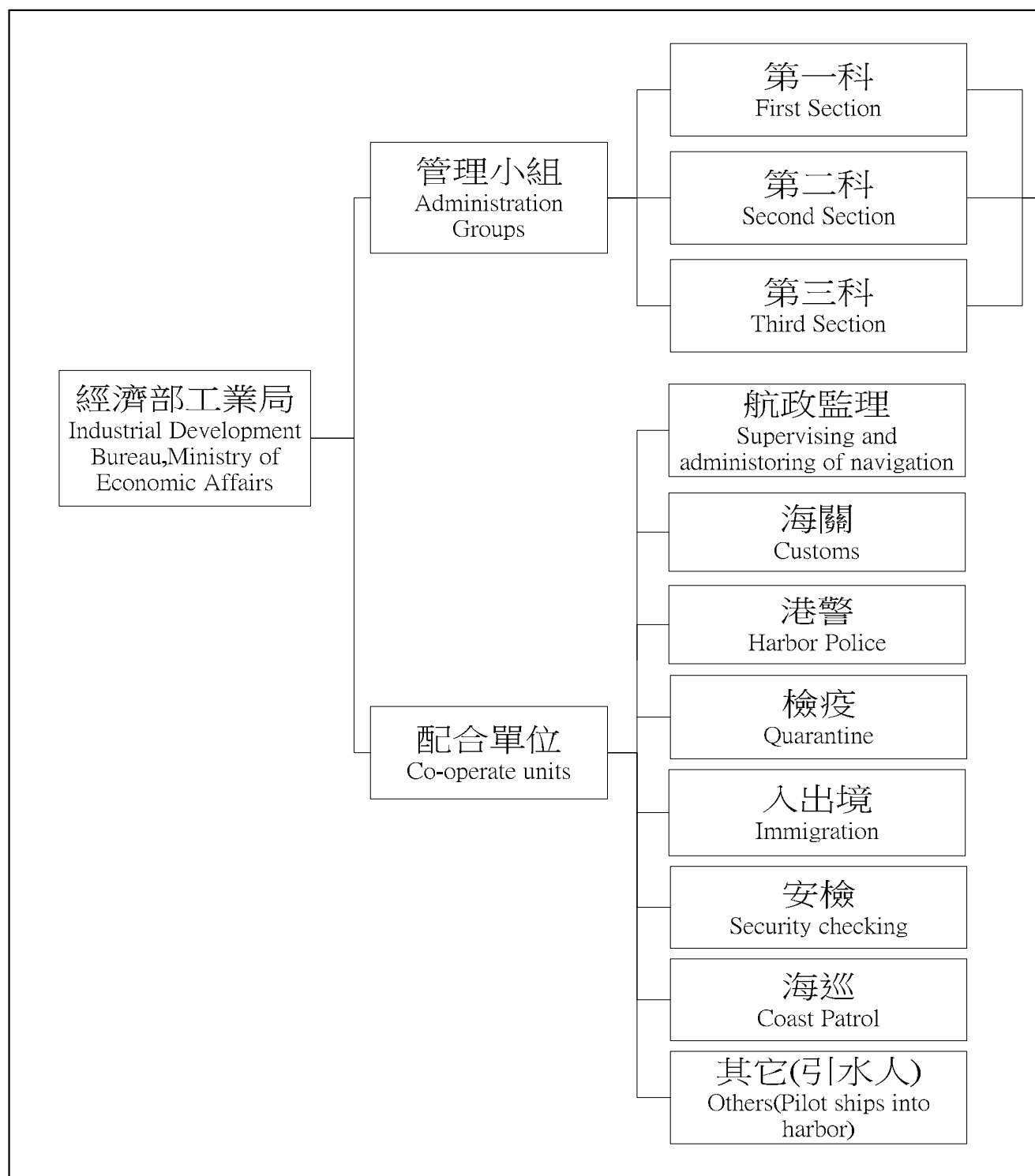


Unit : N T \$

11	12	13	14	16	18=7-17
其他營業費用 Other Operating Expense	業務費用 Business Expense	管理費用 Administration Expense	土地租金 Rent Expense	營業外支出 Non - Operating Expense	盈餘 Surplus
-	295,506,644	78,507,062	-	334,993,951	371,490,562
-	382,578,274	145,910,434	-	259,676,776	601,370,360
107,508,794	-	98,719,290	-	233,756,627	704,448,624
96,915,734	-	119,667,409	-	371,935,882	1,005,613,745
68,003,627	-	102,325,331	23,204,628	77,345,931	1,528,153,237
61,356,778	20,059,866	112,419,528	23,204,628	290,113,469	1,028,848,103
150,551,995	-	142,532,192	23,204,628	182,854,613	1,659,927,346
146,131,160	-	165,540,459	23,204,628	197,879,817	1,579,034,003
75,257,373	-	122,693,813	23,204,628	50,982,711	1,717,274,251
53,041,412	-	137,439,742	23,204,628	84,386,222	1,589,936,652
48,003,391	-	140,740,922	23,204,628	66,729,344	1,118,671,016
3,862,301	-	11,527,841	1,933,719	3,760,537	159,181,980
3,704,190	-	11,106,338	1,933,719	3,518,818	160,280,439
3,646,256	-	11,698,652	1,933,719	3,601,417	146,562,901
3,597,500	-	12,372,736	1,933,719	3,578,112	122,316,918
3,548,994	-	12,690,250	1,933,719	3,808,767	114,845,809
3,055,756	-	10,157,229	1,933,719	6,577,385	87,630,588
3,810,153	-	12,046,982	1,933,719	3,684,756	82,928,958
4,313,536	-	10,871,821	1,933,719	4,320,061	10,131,143
4,573,292	-	11,485,945	1,933,719	10,447,699	50,099,590
4,951,174	-	11,708,346	1,933,719	4,462,776	100,480,213
4,373,508	-	11,796,835	1,933,719	6,397,859	75,278,292
4,566,731	-	13,277,947	1,933,719	12,571,157	8,934,185



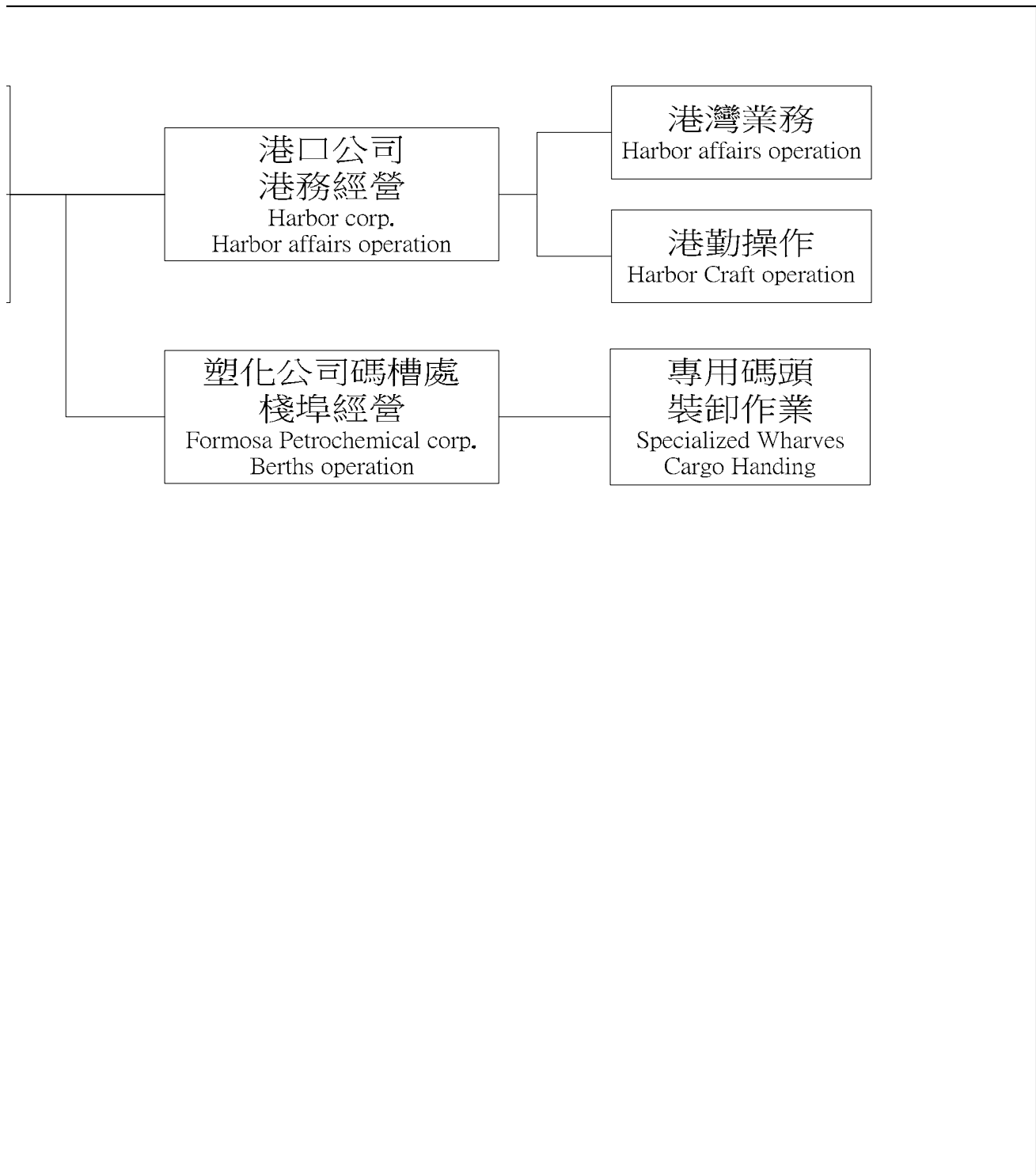
五、組織與人事  
附表二十二 港內各作業組織系統表





## 五、 Organization and Personnel matters

### Table 22. Organization Chart





附表二十三 港內作業人數（依組織別）

單位：人

年(底)別 End of Year	總計 Total		麥寮港管理小組 Mailiao Harbor Administration		民營事業 Harbor Operation Company	
	職員	工員	職員	工員	職員	工員
	Staff	Work Men	Staff	Work Men	Staff	Work Men
2001	402	6	4	6	38	-
2002	415	5	3	5	39	-
2003	455	5	2	5	39	-
2004	324	178	4	3	43	-
2005	313	191	10	-	43	-
2006	255	258	10	-	44	-
2007	279	268	9	-	41	-
2008	280	278	8	-	41	-
2009	249	316	8	-	42	-
2010	248	312	7	-	41	-
2011	272	328	7	-	41	-





**Table 23. Number of Staff & Workmen of the Bureau and Branch Offices**

Unit : Person

港灣作業機構 Marine Service Org.		棧埠作業機構 Marine Terminal Org.		船舶機械修造工廠 Ship & Machinery Works	
職員	工員	職員	工員	職員	工員
Staff	Work Men	Staff	Work Men	Staff	Work Men
77	-	283	-	-	-
81	-	292	-	-	-
78	-	336	-	-	-
93	-	184	175	-	-
78	14	182	177	-	-
11	85	190	173	-	-
15	90	214	178	-	-
10	88	221	190	-	-
10	95	189	221	-	-
10	97	190	215	-	-
10	103	214	225	-	-



附表二十四 港內作業人員學歷（依組織別）

單位：人

年(底)別 End of Year	總計 Total		研究所 Graduate School		大學 Collage	
	男	女	男	女	男	女
	Male	Female	Male	Female	Male	Female
2001	397	11	7	-	38	3
2002	408	12	7	-	36	3
2003	446	14	7	-	35	4
2004	470	32	8	-	60	5
2005	466	38	6	1	57	8
2006	473	40	6	1	59	9
2007	501	46	6	1	59	9
2008	517	41	6	1	63	8
2009	525	40	7	2	66	7
2010	523	37	8	1	70	6
2011	563	37	10	-	74	6
管理小組	5	2	2	-	3	2
民營事業	36	5	3	-	13	2
港灣作業機構	109	4	-	-	13	1
棧埠作業機構	413	26	5	-	45	1



**Table 24. Number of Staff by Education**

Unit : Person

專 科 Junior Collage		高 中 職 Senior High School		國 中 Junior High School		國 小 Primary School	
男	女	男	女	男	女	男	女
Male	Female	Male	Female	Male	Female	Male	Female
115	5	192	1	34	1	11	1
120	5	193	2	35	1	17	1
112	5	228	3	45	1	19	1
187	11	115	6	79	4	21	6
191	12	119	5	78	6	15	6
203	13	110	5	83	6	12	6
218	13	120	8	83	6	15	9
233	12	126	9	78	5	11	6
230	11	129	10	82	5	11	5
235	12	128	14	73	2	9	2
254	12	157	14	65	2	3	3
-	-	-	-	-	-	-	-
19	1	1	2	-	-	-	-
23	1	55	1	17	-	1	1
212	10	101	11	48	2	2	2



附表二十五 港內作業人員年齡（依組織別）

單位：人

年(底)別	總計		19歲以下		20-24歲		25-29歲		30-34歲		35-39歲	
	Total		Age Under		Age		Age		Age		Age	
End of Year	男	女	男	女	男	女	男	女	男	女	男	女
	Male	Female	Male	Female	Male	Female	Male	Female	Male	Female	Male	Female
2001	397	11	-	-	38	2	136	8	96	-	66	1
2002	408	12	-	-	26	1	133	8	114	2	69	1
2003	446	14	-	-	41	1	143	9	121	3	73	1
2004	470	32	1	-	6	2	88	12	123	6	83	6
2005	466	38	1	-	6	2	85	12	116	10	76	7
2006	473	40	2	-	5	2	83	10	105	8	83	12
2007	501	46	1	-	4	2	88	11	107	9	92	13
2008	517	41	1	-	6	2	93	10	121	9	94	13
2009	525	40	1	-	4	2	93	9	125	8	93	13
2010	523	37	-	-	4	-	88	2	112	6	98	17
2011	563	37	-	-	13	-	108	2	122	5	96	15
管理小組	5	2	-	-	-	-	-	-	-	1	3	-
民營事業	36	5	-	-	-	-	-	-	1	1	11	3
港灣作業機構	109	4	-	-	-	-	1	-	10	1	16	1
棧埠作業機構	413	26	-	-	13	-	107	2	111	2	66	11





**Table 25. Number of Staff by Age**

Unit : Person

40 - 44 歲		45 - 49 歲		50 - 54 歲		55 - 59 歲		60 - 64 歲		65 歲以上	
Age		Age		Age		Age		Age		Age Over	
男	女	男	女	男	女	男	女	男	女	男	女
Male	Female	Male	Female	Male	Female	Male	Female	Male	Female	Male	Female
28	-	18	-	14	-	-	-	1	-	-	-
23	-	21	-	19	-	1	-	2	-	-	-
23	-	23	-	18	-	3	-	1	-	-	-
65	5	48	-	40	-	10	1	6	-	-	-
68	6	48	-	46	-	13	1	7	-	-	-
67	5	54	2	42	-	19	1	13	-	-	-
76	6	53	2	40	-	21	1	17	1	2	1
79	6	49	1	39	-	18	-	17	-	-	-
76	7	49	-	40	-	29	-	15	1	-	-
80	7	56	5	43	-	25	-	16	-	1	-
93	9	53	5	40	1	22	-	15	-	1	-
1	1	-	-	1	-	-	-	-	-	-	-
14	1	3	-	1	-	2	-	4	-	-	-
25	-	15	1	20	1	15	-	6	-	1	-
53	7	35	4	18	-	5	-	5	-	-	-



六、港埠設施  
附表二十六 機具、車、船（依組織別）

噸量單位：公噸  
總噸位單位：噸

年(底)別  End of Year	機									
	貨櫃起重機		跨載機		側跨機		貨櫃裝車機		貨櫃牽引機	
	Container Crane		Straddle Carrier		Lateral Straddle		Container Transfer Unit		Yard Tractor	
	台	噸量	台	噸量	台	噸量	台	噸量	台	噸量
	S.	Tonnage	S.	Tonnage	S.	Tonnage	S.	Tonnage	S.	Tonnage
2001	1	50	-	-	-	-	-	-	-	-
2002	1	50	-	-	-	-	-	-	-	-
2003	2	100	-	-	-	-	-	-	-	-
2004	2	100	-	-	-	-	-	-	-	-
2005	2	100	-	-	-	-	-	-	-	-
2006	2	100	-	-	-	-	-	-	-	-
2007	2	50	-	-	-	-	-	-	-	-
2008	2	50	-	-	-	-	-	-	-	-
2009	2	50	-	-	-	-	-	-	-	-
2010	2	50	-	-	-	-	-	-	-	-
2011	2	50	-	-	-	-	-	-	-	-
管理小組	-	-	-	-	-	-	-	-	-	-
民營事業	-	-	-	-	-	-	-	-	-	-
港灣作業機構	-	-	-	-	-	-	-	-	-	-
棧埠作業機構	2	50	-	-	-	-	-	-	-	-



## 六、 Harbor Facilities

### Table 26. Mechanical, Vehicular & Marine Equipment

Tonnage Unit : M.T.  
Gross Tonnage : Ton.

具 Mechanical Equipment											
貨櫃吊運機 Container Transtainer		貨櫃車架 Container Chassis		貨櫃側載機 Container Side Loader		空櫃推高機 Empty C. Fork Lift		起重機 Mobile Crane		推高機 Fork - Lift Truck	
台	噸量	台	噸量	台	噸量	台	噸量	台	噸量	台	噸量
S.	Tonnage	S.	Tonnage	S.	Tonnage	S.	Tonnage	S.	Tonnage	S.	Tonnage
2	40	-	-	-	-	1	8	-	-	1	2.5
2	40	-	-	-	-	1	8	1	40	1	2.5
4	80	-	-	-	-	2	16	1	40	1	2.5
4	80	-	-	-	-	2	16	1	40	6	38
4	80	-	-	-	-	2	16	1	40	14	39
4	80	-	-	-	-	2	16	1	40	14	39
4	80	-	-	-	-	2	16	3	46	15	20
4	80	-	-	-	-	2	16	3	46	15	20
4	80	-	-	-	-	2	16	1	40	15	20
4	80	-	-	-	-	2	16	1	40	14	15
4	80	-	-	-	-	2	16	1	40	14	15
-	-	-	-	-	-	-	-	-	-	-	-
-	-	-	-	-	-	-	-	-	-	-	-
-	-	-	-	-	-	-	-	-	-	-	-
4	80	-	-	-	-	2	16	1	40	14	15



附表二十六 機具、車、船（依組織別）（續完）

噸量單位：公噸  
總噸位單位：噸

年(底)別  End of Year	車輛 Vehicular Equipment									
	拖 車		拖 板		卡車、工程車、 清掃車		挖 泥 船		受 泥 船	
	Towing Tractor		Full Trailer		Truck		Dredger		Mud Boat	
	台 S.	噸量 Tonnage	台 S.	噸量 Tonnage	台 S.	噸量 Tonnage	艘 V.	總噸位 Tonnage	艘 V.	總噸位 Tonnage
2001	-	-	-	-	8	-	-	-	-	-
2002	-	-	-	-	8	-	-	-	-	-
2003	-	-	-	-	14	10	-	-	-	-
2004	13	39	10	35	20	7	-	-	-	-
2005	16	39	10	35	37	22	-	-	-	-
2006	16	39	10	35	29	33	4	5	-	-
2007	16	35	10	35	33	13	4	5	-	-
2008	16	35	10	35	31	11	4	5	-	-
2009	16	35	10	35	34	22	1	1,809	-	-
2010	16	35	10	35	32	15	1	1,809	-	-
2011	16	35	10	35	31	11	1	1,809	-	-
管理小組	-	-	-	-	-	-	-	-	-	-
民營事業	-	-	-	-	-	-	-	-	-	-
港灣作業機構	-	-	-	-	2	7	1	1,809	-	-
棧埠作業機構	16	35	10	35	29	4	-	-	-	-



---

資料來源:麥寮工業區專用港管理股份有限公司。





## 附表二十七 港埠工程

總長度單位：公尺  
有效容量單位：公噸  
繫泊能力單位：總噸  
堆儲量單位：公噸

年 (底) 別 End of Year	專 用 碼 頭 Wharves		倉 棧 Warehouse and Sheds		浮筒 Bouys	
	座 Set	總長度 T.L.	座 Set	總長度 T.L.	座 Set	總長度 T.L.
2001	17	4,666	-	-	-	-
2002	17	4,666	-	-	-	-
2003	17	4,666	-	-	-	-
2004	17	4,666	-	-	-	-
2005	17	4,666	-	-	-	-
2006	17	4,666	-	-	-	-
2007	19	5,326	-	-	-	-
2008	19	5,326	-	-	-	-
2009	19	5,326	-	-	-	-
2010	20	5,701	-	-	-	-
2011	20	5,701	-	-	-	-









主管機關

經濟部工業局

台北市信義路三段 41-3 號

電話：(02)27541255 傳真：(02)27043757



管理單位

經濟部工業局麥寮工業專用港管理小組

雲林縣麥寮鄉台塑工業園區港務大樓四樓

電話：(05)6812533 傳真：(05)6812534



經營單位

麥寮工業區專用港管理股份有限公司

雲林縣麥寮鄉台塑工業園區一號

電話：(05)6812766 傳真：(05)6812135